

Schlumberger

Company: **Noble Energy Inc**

Well: **Blach 22-6B**

Field: **Schramm**

County: **Yuma**

State: **Colorado**

Well: **Blach 22-6B**
Field: **Schramm**
County: **Yuma**
State: **Colorado**

Field: **Schramm**
County: **Yuma**
State: **Colorado**

County: **Yuma** State: **Colorado**

County:	Yuma		
Field:	Schramm		
Location:	2210' FNL & 2430' FWL		
Well:	Blach 22-6B		
Company:	Noble Energy Inc		
<div style="text-align: center;"> CEMENT BOND GAMMA RAY CASING COLLAR LOG </div>			
2210' FNL & 2430' FWL		Elev.: K.B. 4010.00 ft G.L. 4004.00 ft D.F.	
Permanent Datum:	GROUND LEVEL	Elev.: 4004.00 ft	
Log Measured From:	KELLY BUSHING	6.00 ft above Perm. Datum	
Drilling Measured From:	KELLY BUSHING		
API Serial No. 05-125-11951	Section 6	Township 1N	Range 46W

[illegible]

Logging Date	20-Apr-2011					
Run Number	1					
Depth Driller	2743 ft					
Schlumberger Depth	2666 ft					
Bottom Log Interval	2658 ft					
Top Log Interval	0 ft					
Casing Driller Size @ Depth	4.500 in @					
Casing Schlumberger						
Bit Size	6.250 in					
Type Fluid In Hole	WATER					
Density	8.4 lbm/gal					
Fluid Loss	PH					
MUD Source Of Sample						
RM @ Measured Temperature	@					
RMF @ Measured Temperature	@					
RMC @ Measured Temperature	@					
Source RMF	RMC					
RM @ MRT	RMF @ MRT					
Maximum Recorded Temperatures	126 degF @ 126					
Circulation Stopped	Time					
Logger On Bottom	Time					
Unit Number	Location					
Recorded By	C MARCH / C GOOD					
Witnessed By	MIKE BEARGEON					

Logging Date				
Run Number				
Depth Driller				
Schlumberger Depth				
Bottom Log Interval				
Top Log Interval				
Casing Driller Size @ Depth		@		
Casing Schlumberger				
Bit Size				
Type Fluid In Hole				
Density	Viscosity			
Fluid Loss	PH			
Source Of Sample				
RM @ Measured Temperature		@		
RMF @ Measured Temperature		@		
RMC @ Measured Temperature		@		
Source RMF	RMC			
RM @ MRT	RMF @ MRT	@		@
Maximum Recorded Temperatures				
Circulation Stopped	Time			
Logger On Bottom	Time			
Unit Number	Location			
Recorded By				
Witnessed By				

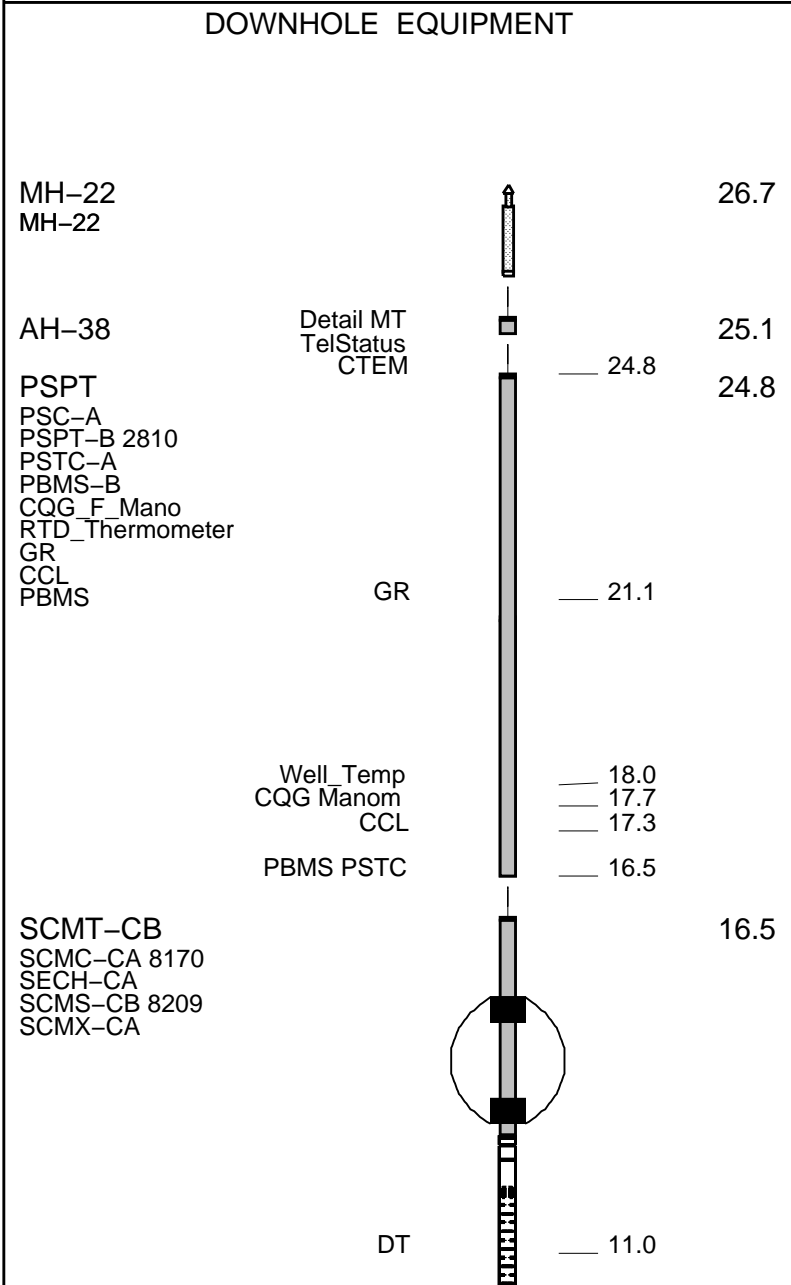
RAN ON 2-APR-2011 BY SCHLUMBERGER

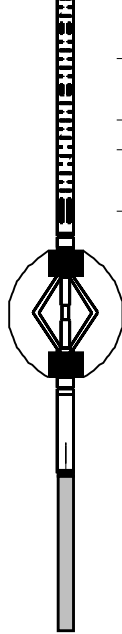
CREW: WILEY	
THANK YOU	

RUN 1			RUN 2		
SERVICE ORDER #:		AT90-00364	SERVICE ORDER #:		
PROGRAM VERSION:		19C0-187	PROGRAM VERSION:		
FLUID LEVEL:			FLUID LEVEL:		
LOGGED INTERVAL	START	STOP	LOGGED INTERVAL	START	STOP

EQUIPMENT DESCRIPTION					
RUN 1			RUN 2		

SURFACE EQUIPMENT
 WITM-A
 PSC_16MHZ





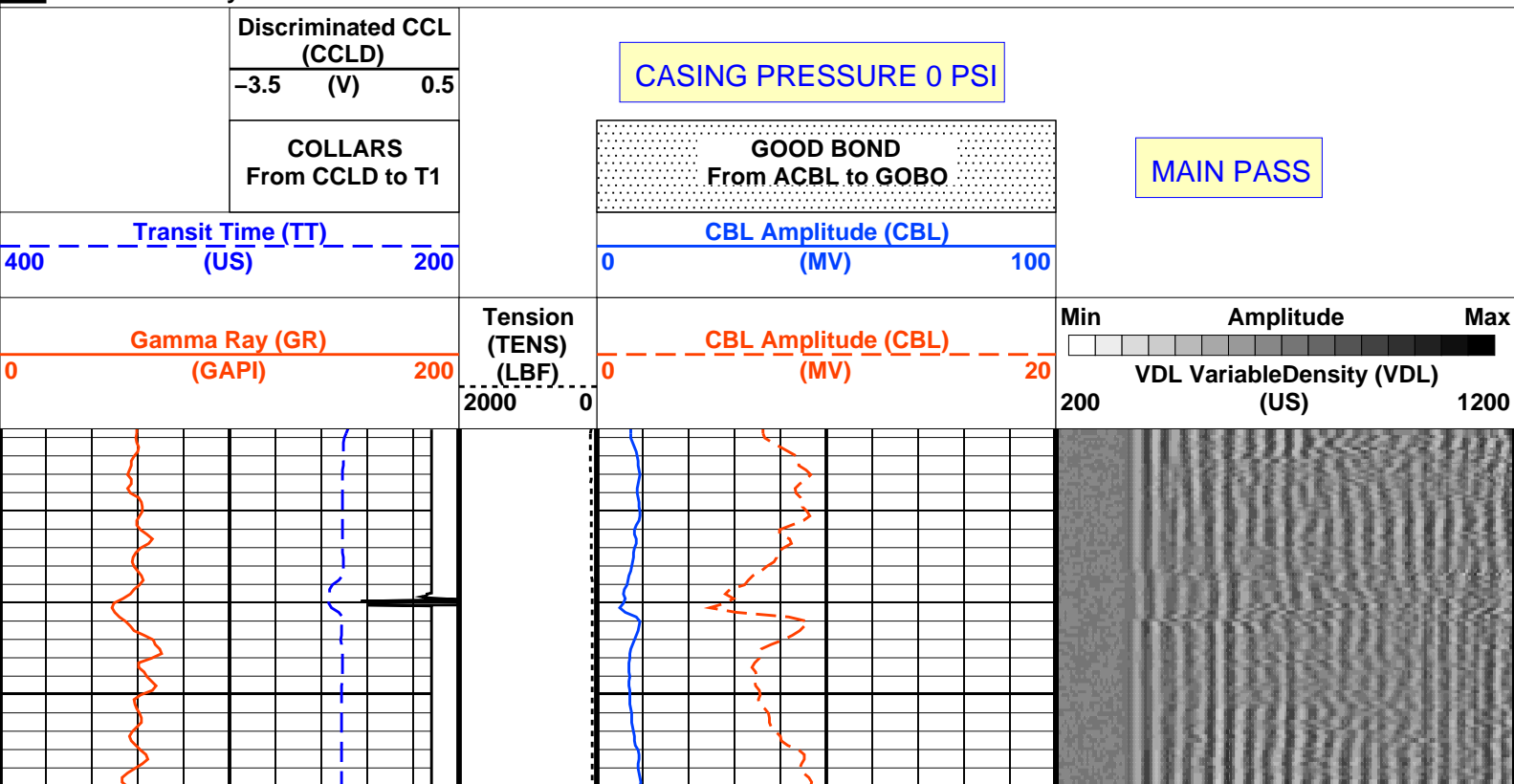
MAXIMUM STRING DIAMETER 7.50 IN
MEASUREMENTS RELATIVE TO TOOL ZERO
ALL LENGTHS IN FEET

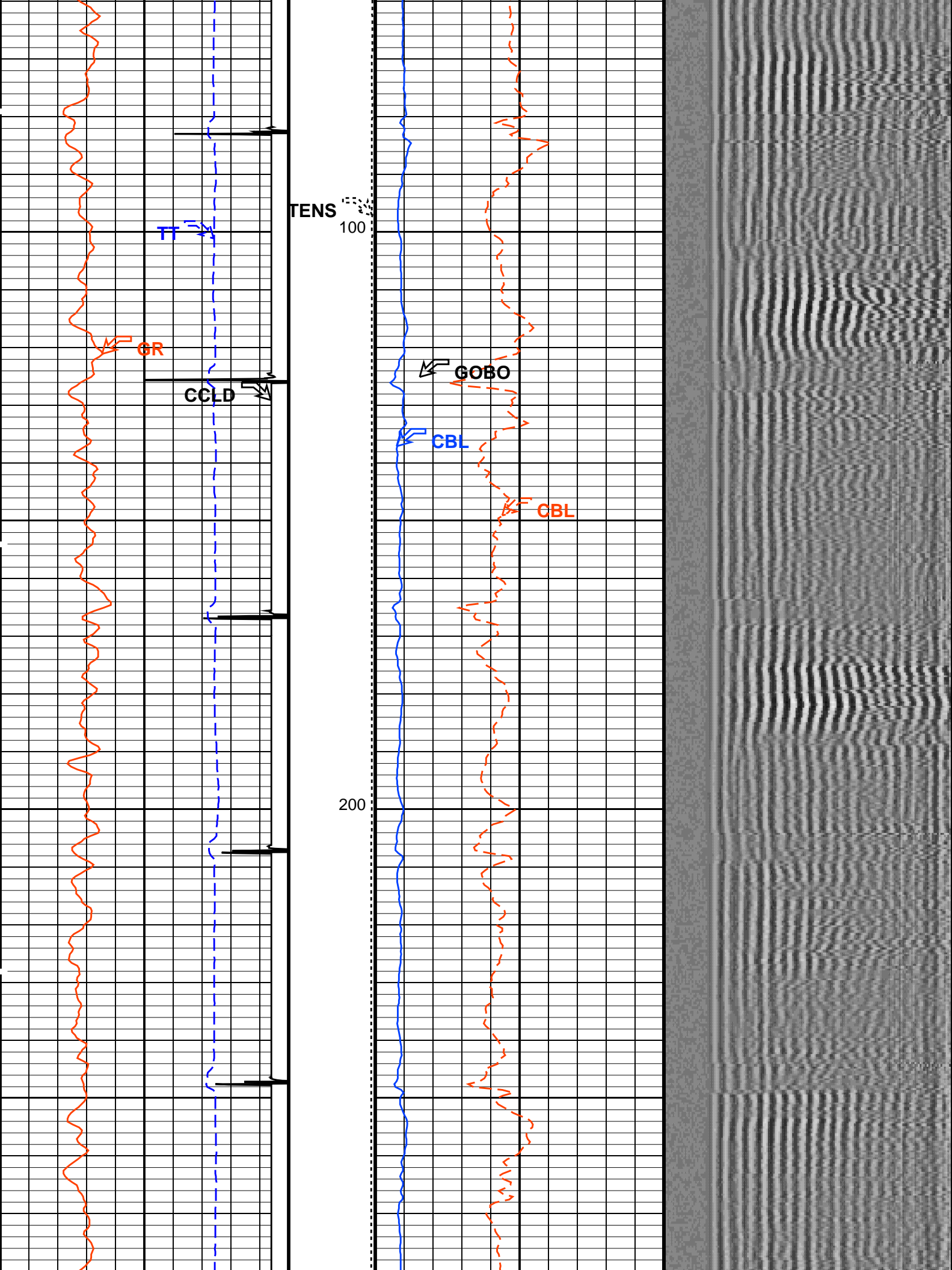
Well: Blach 22-6B

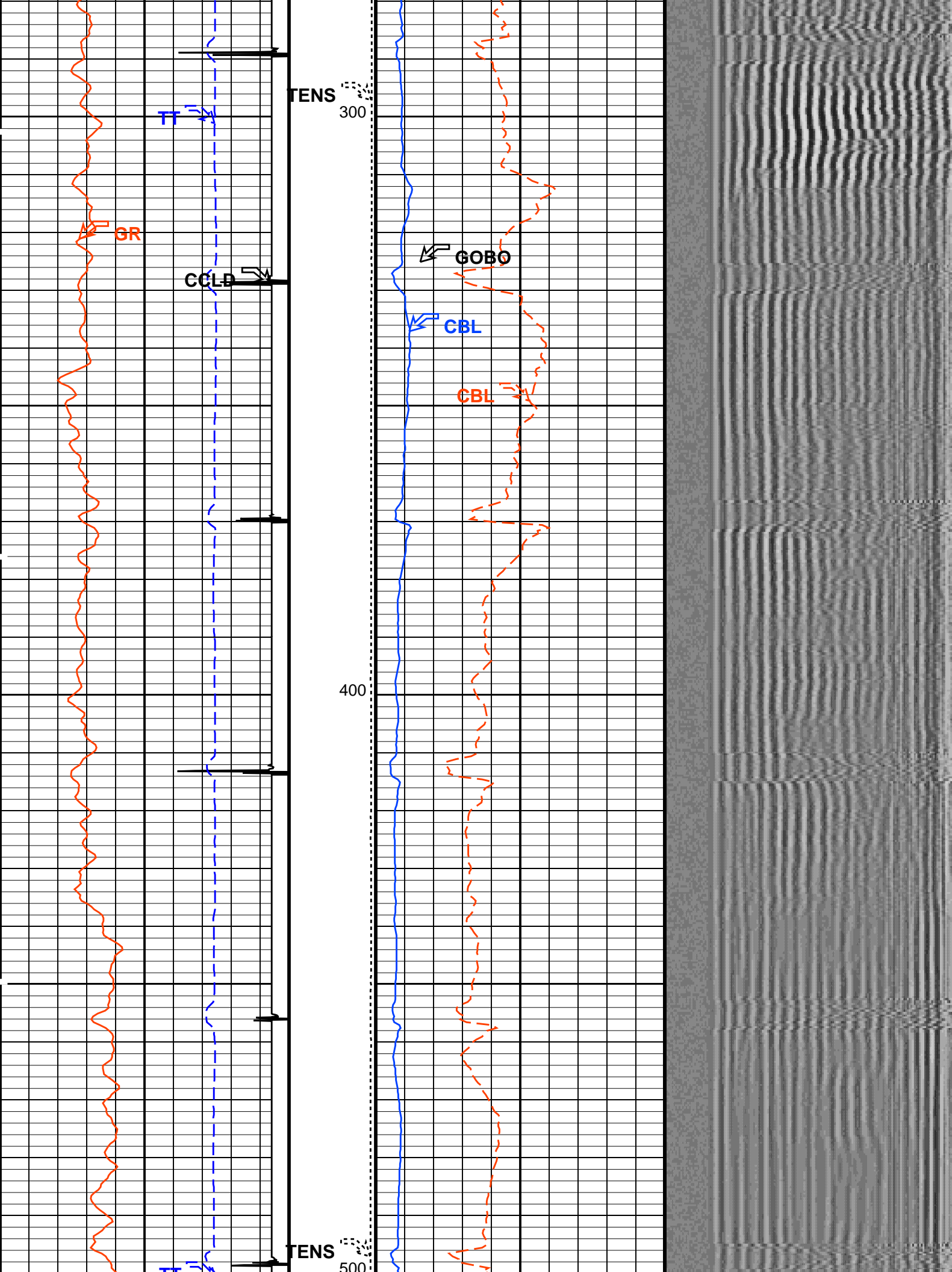
DEFAULT	SCMT PSP 006LUP	FN:5	PRODUCER	20-Apr-2011 13:54	2671.5 FT	21.0 FT
---------	-----------------	------	----------	-------------------	-----------	---------

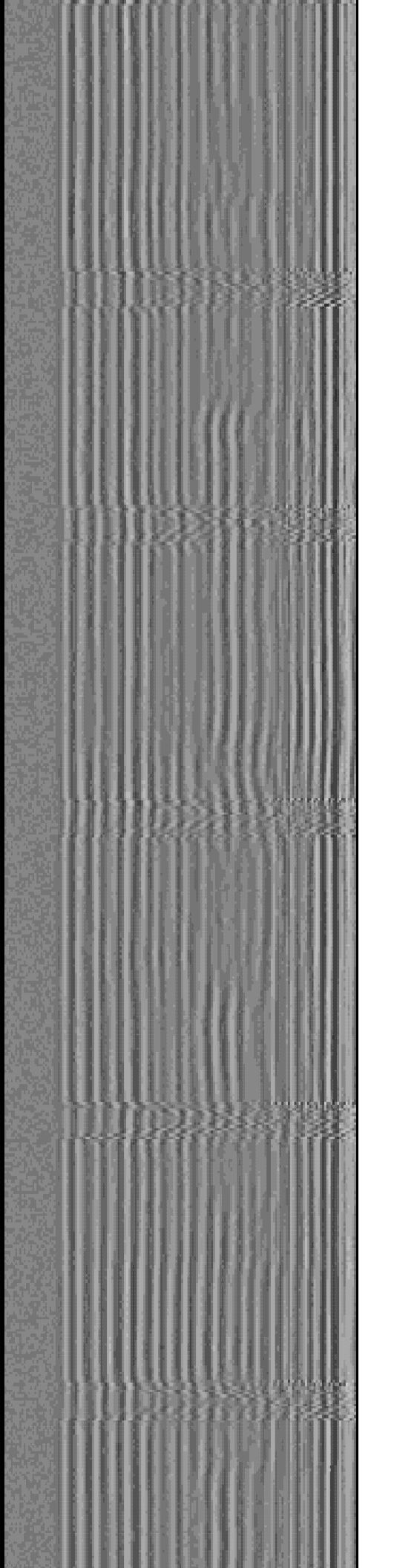
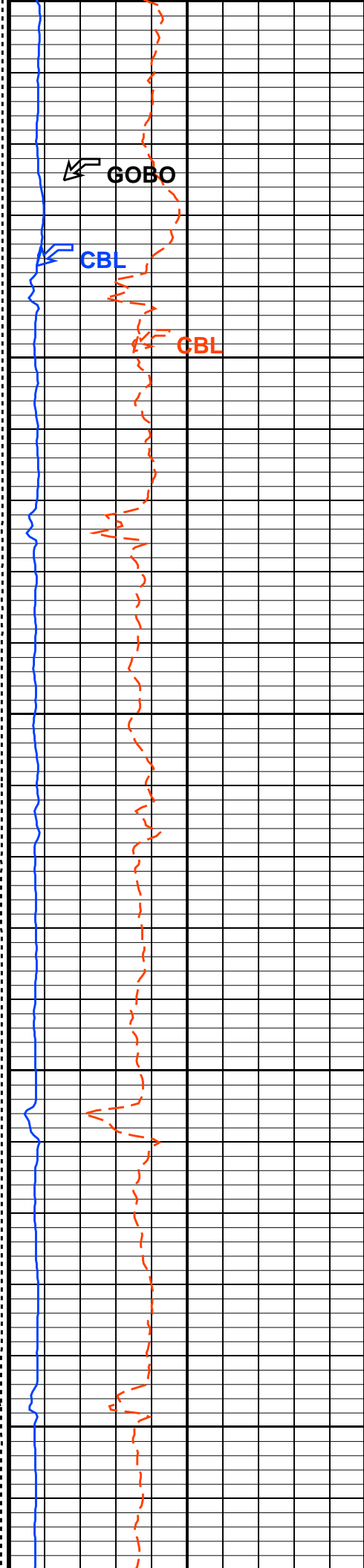
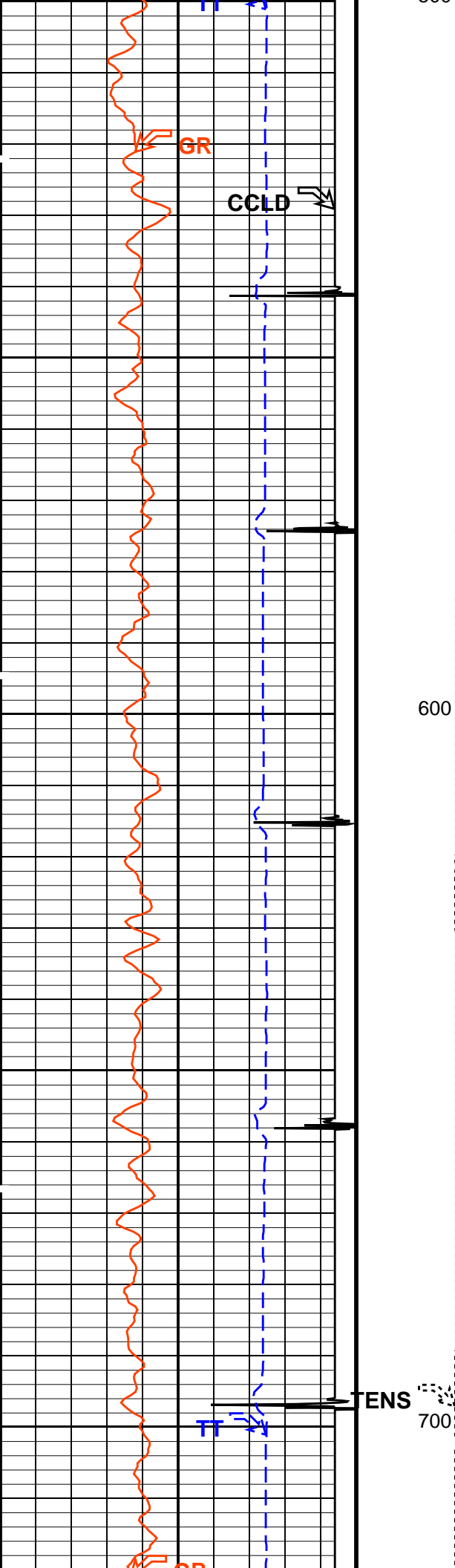
SCMT-CB	19C0-187	PSPT	19C0-187
---------	----------	------	----------

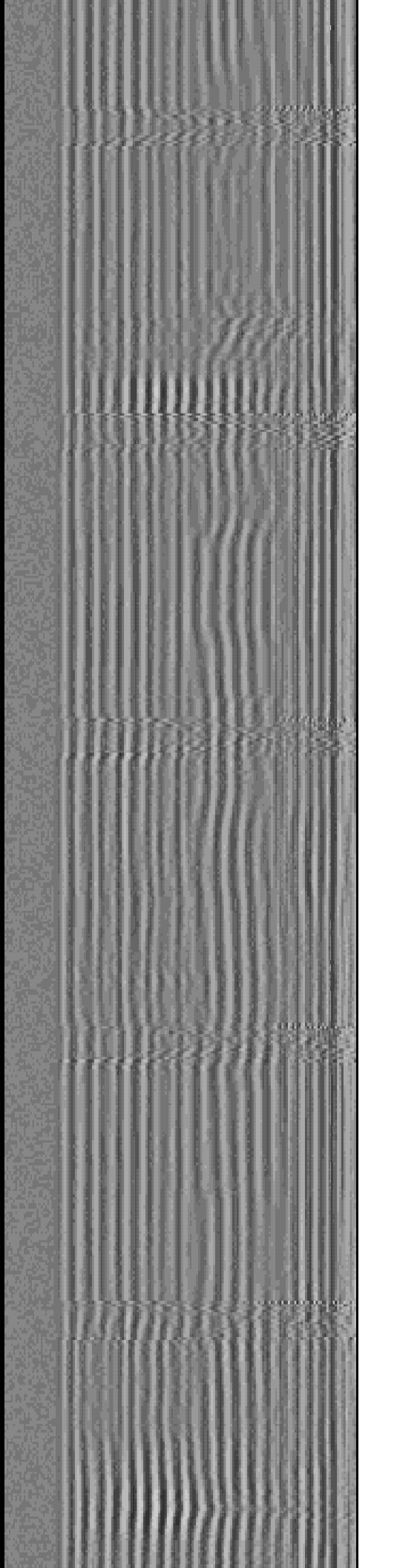
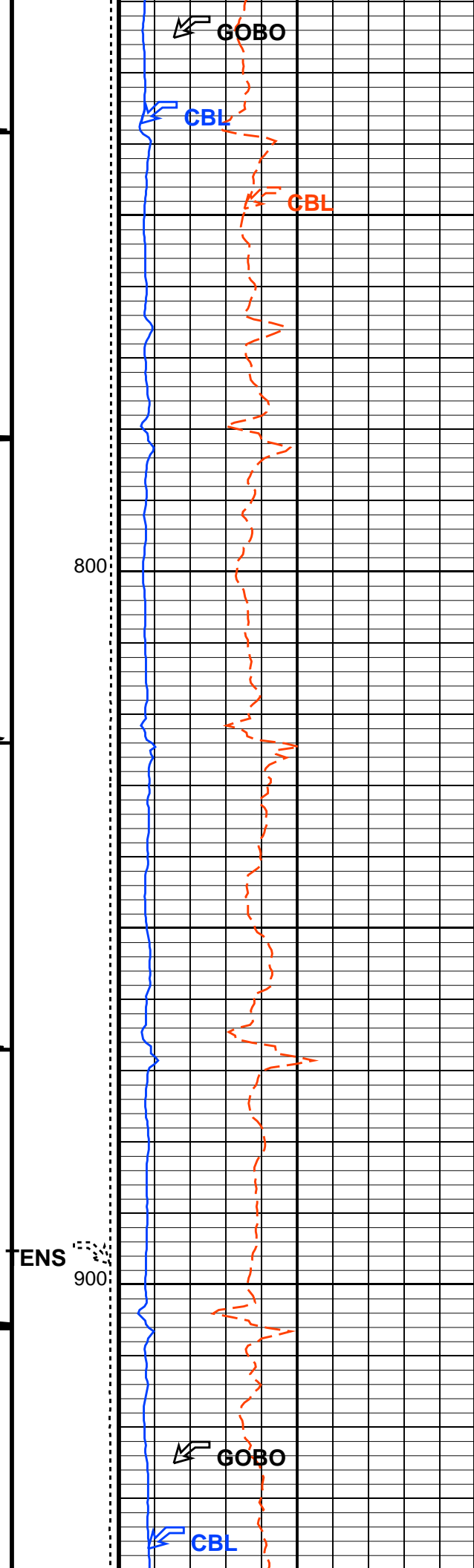
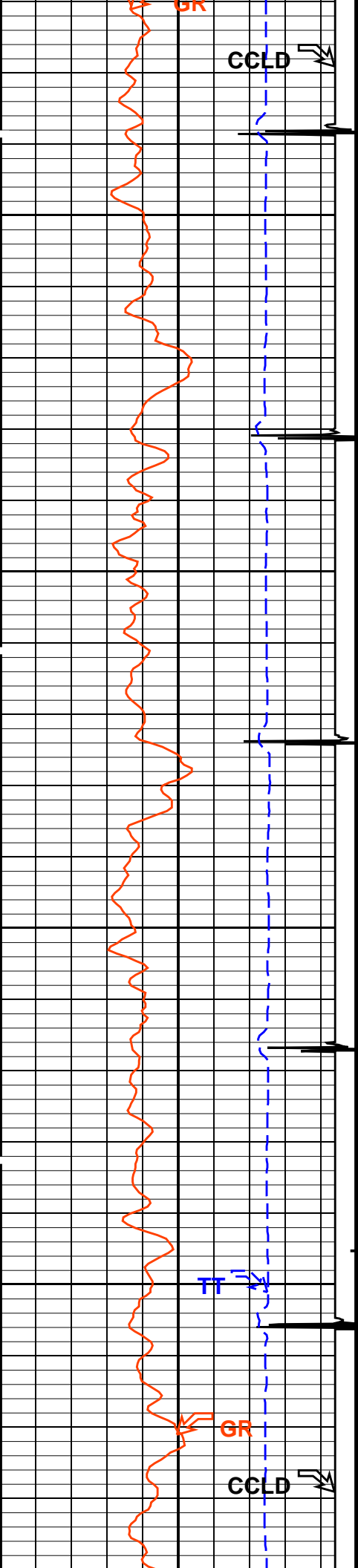
Time Mark Every 60 S

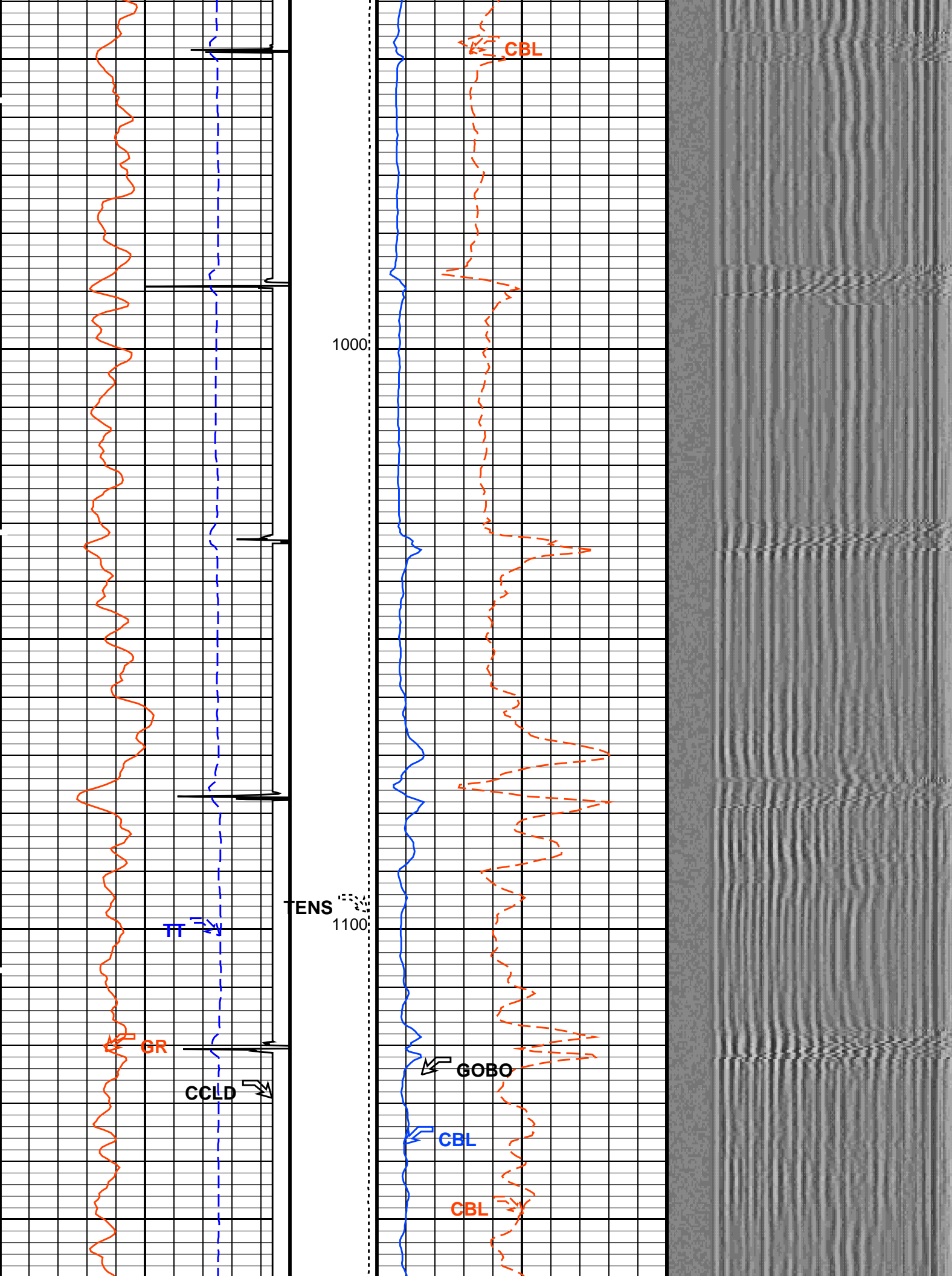


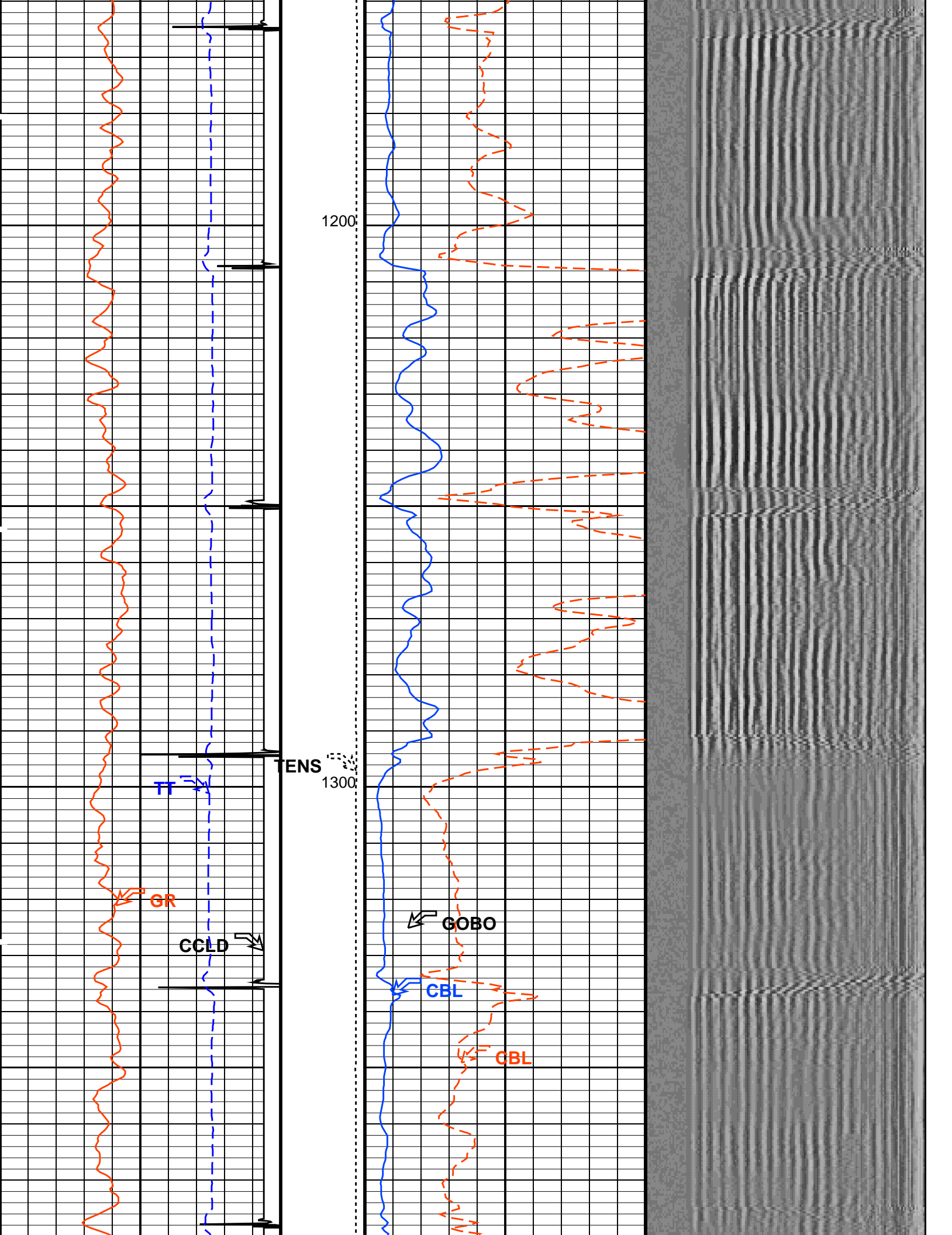


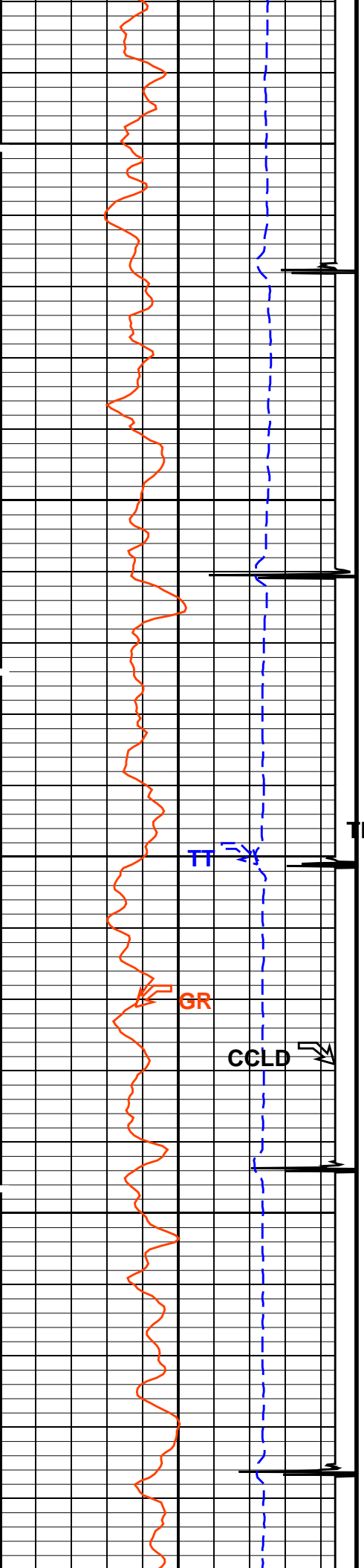












1400

TENS

1500

GR

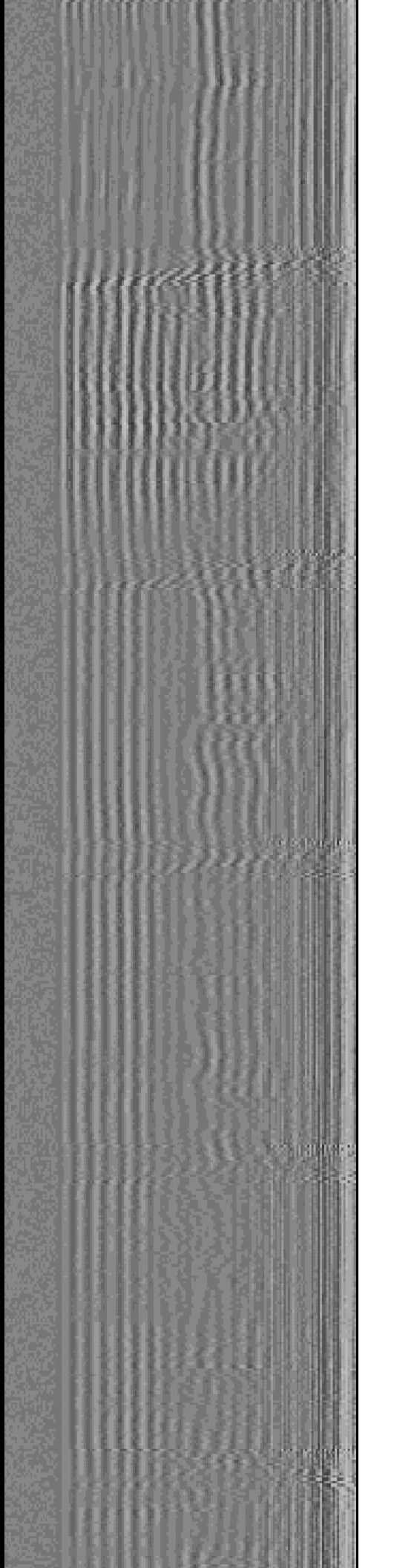
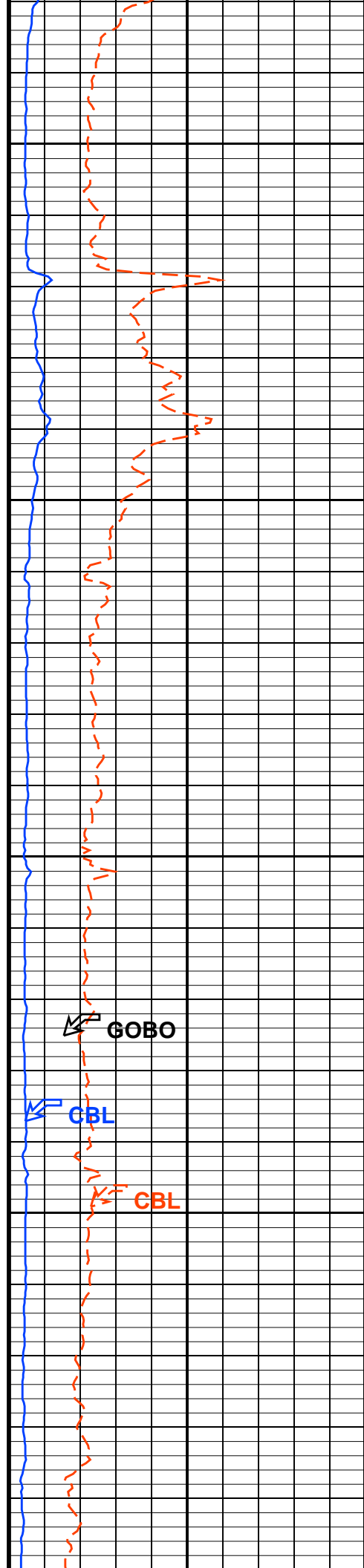
CCLD

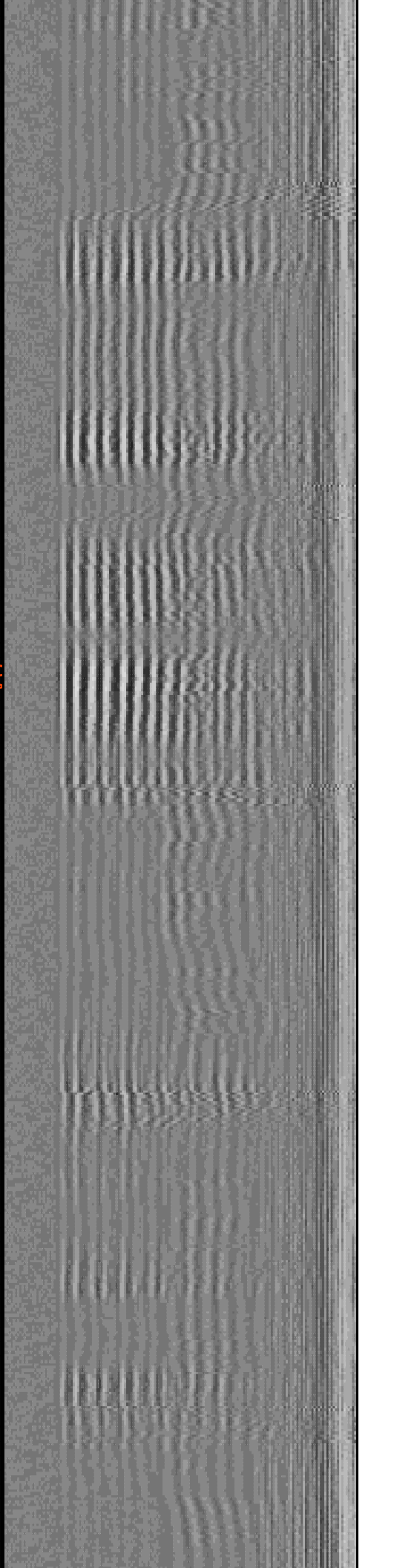
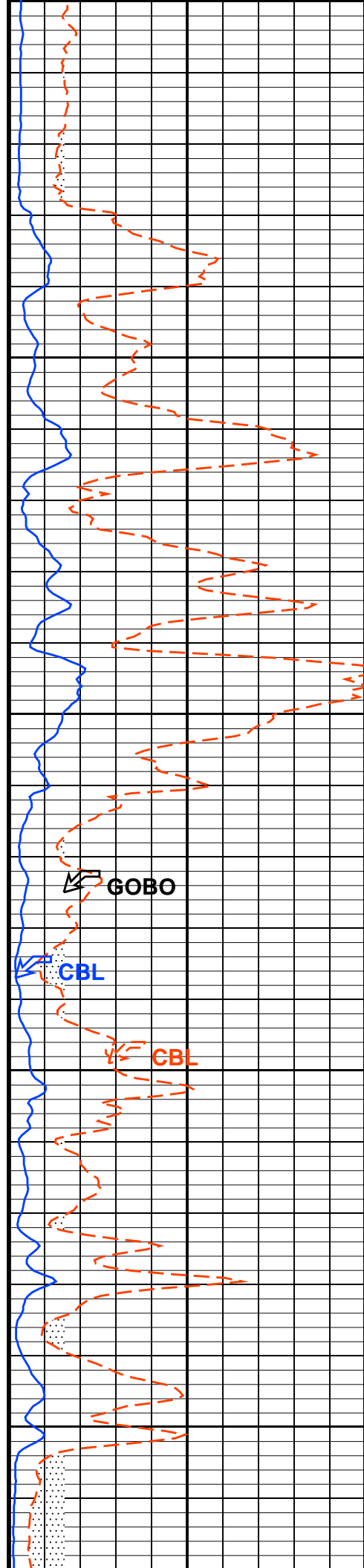
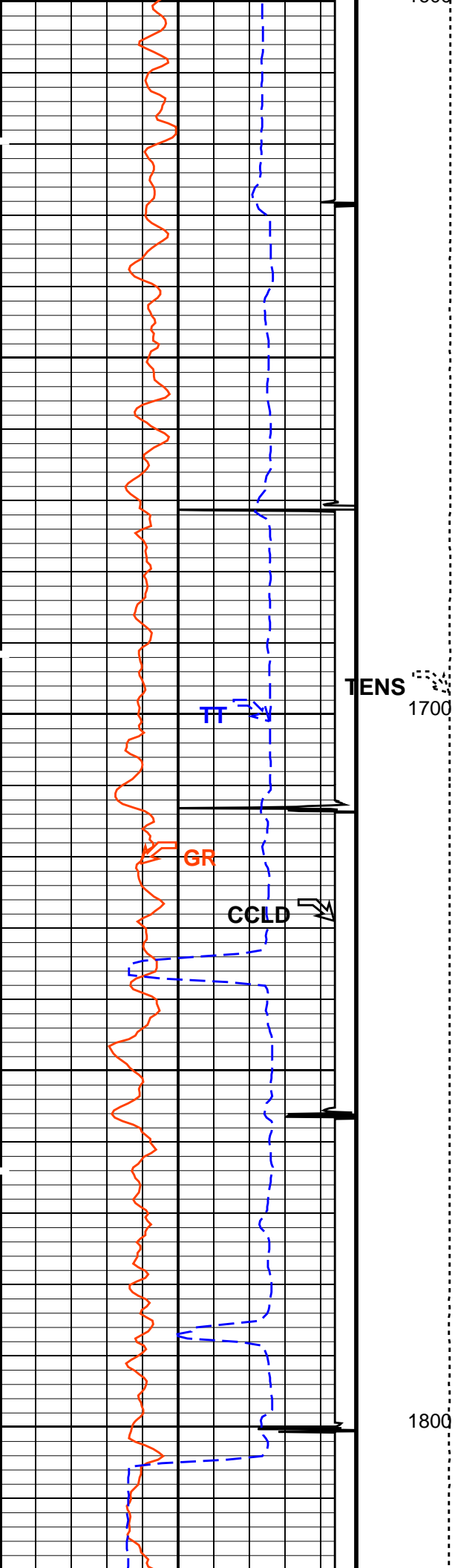
GOBO

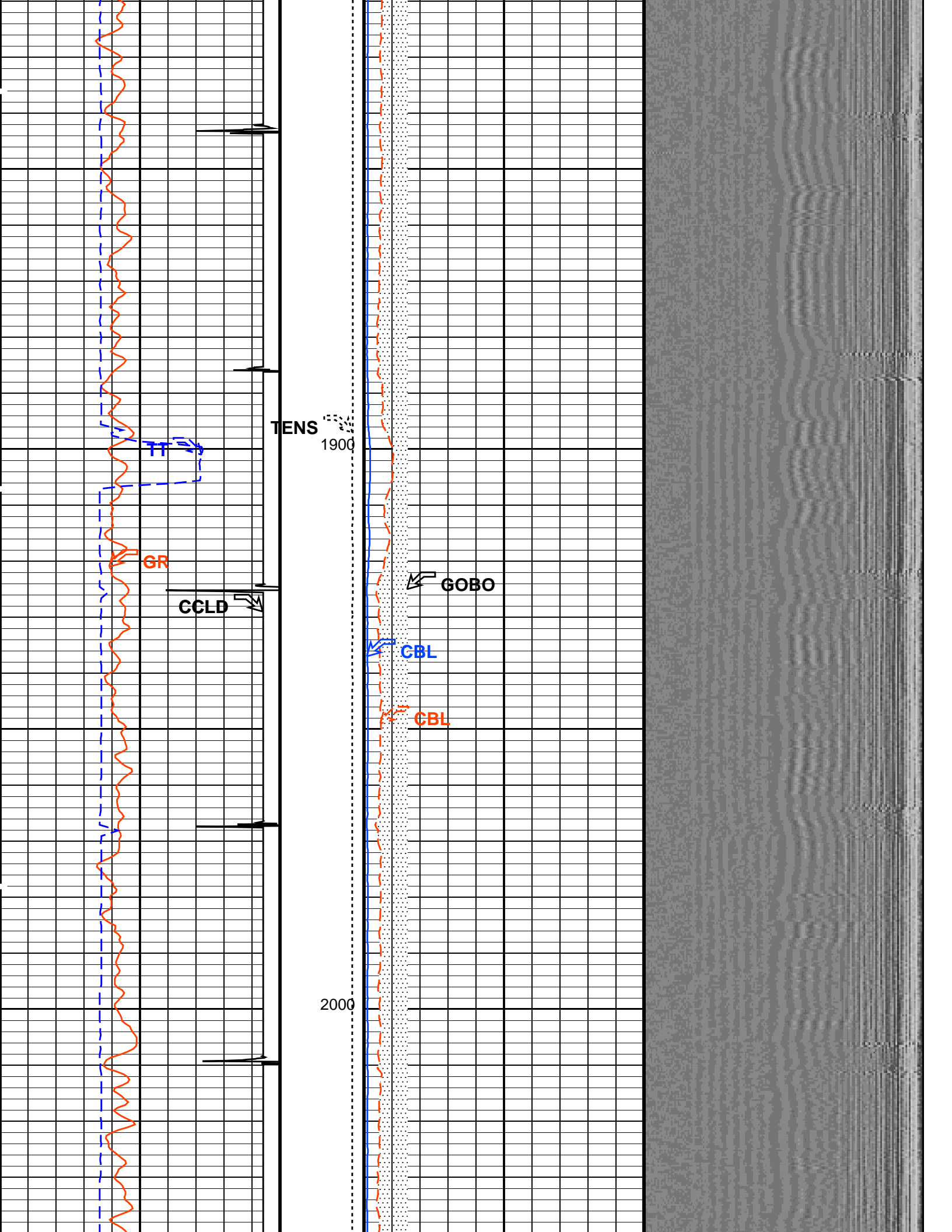
CBL

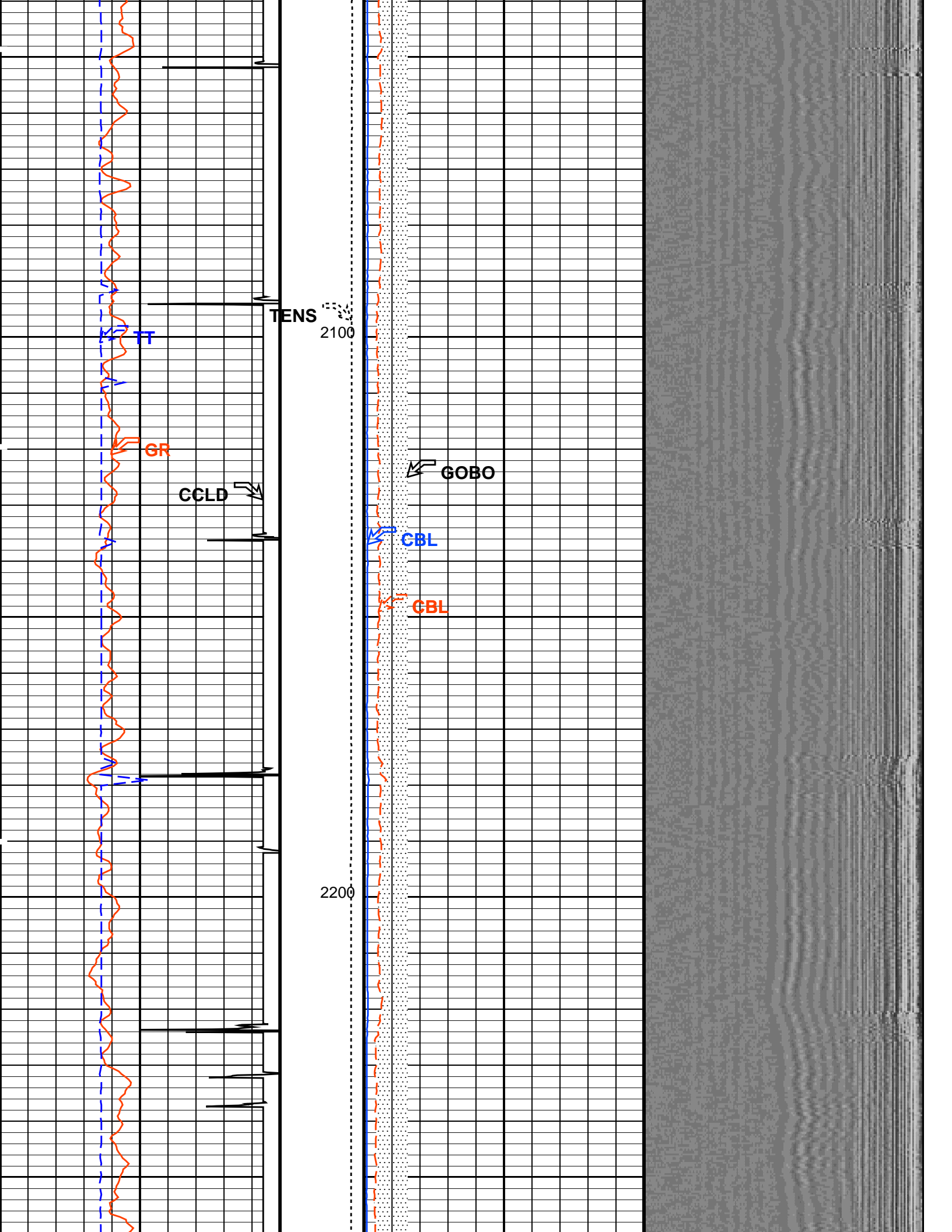
CBL

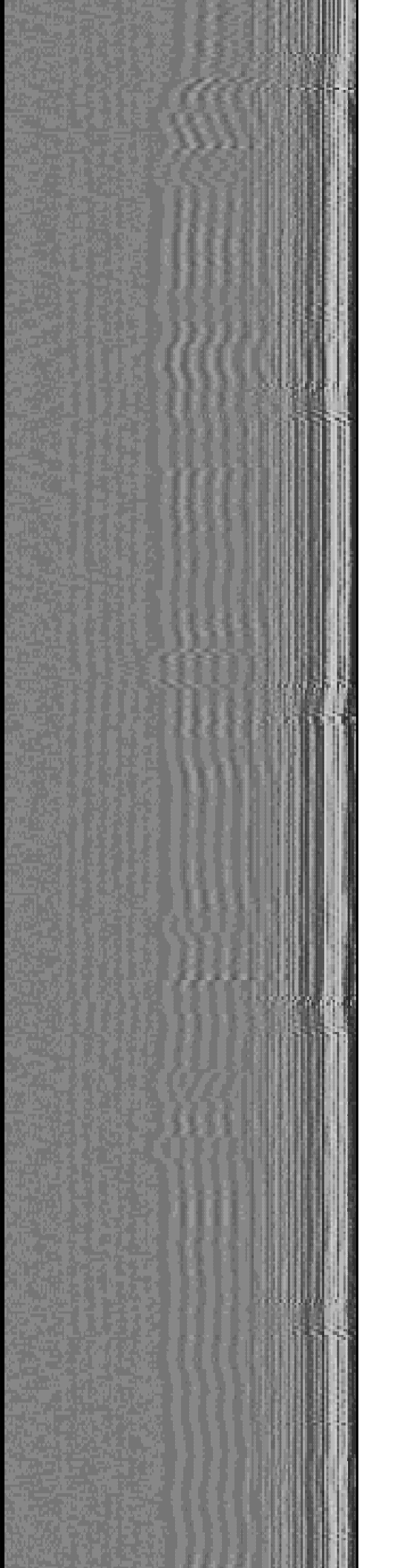
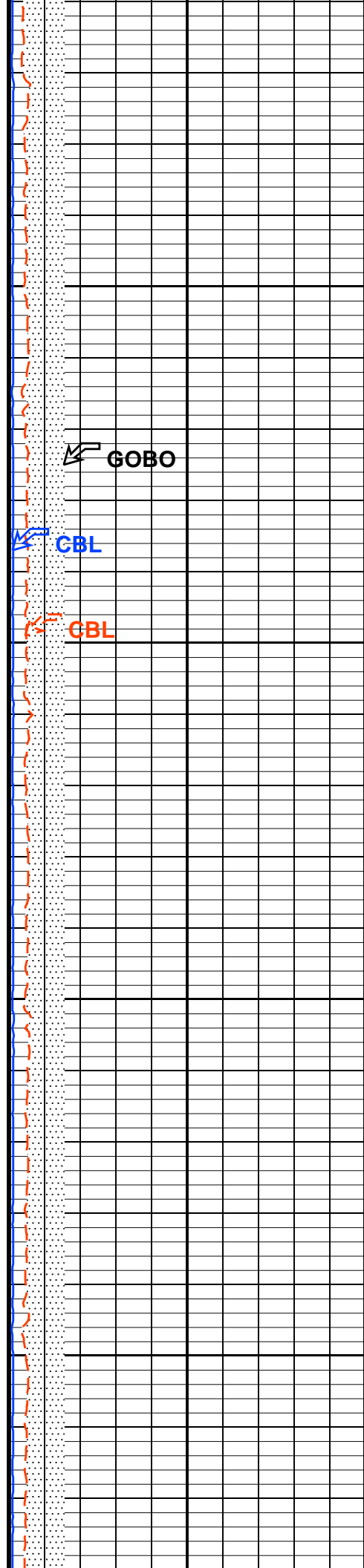
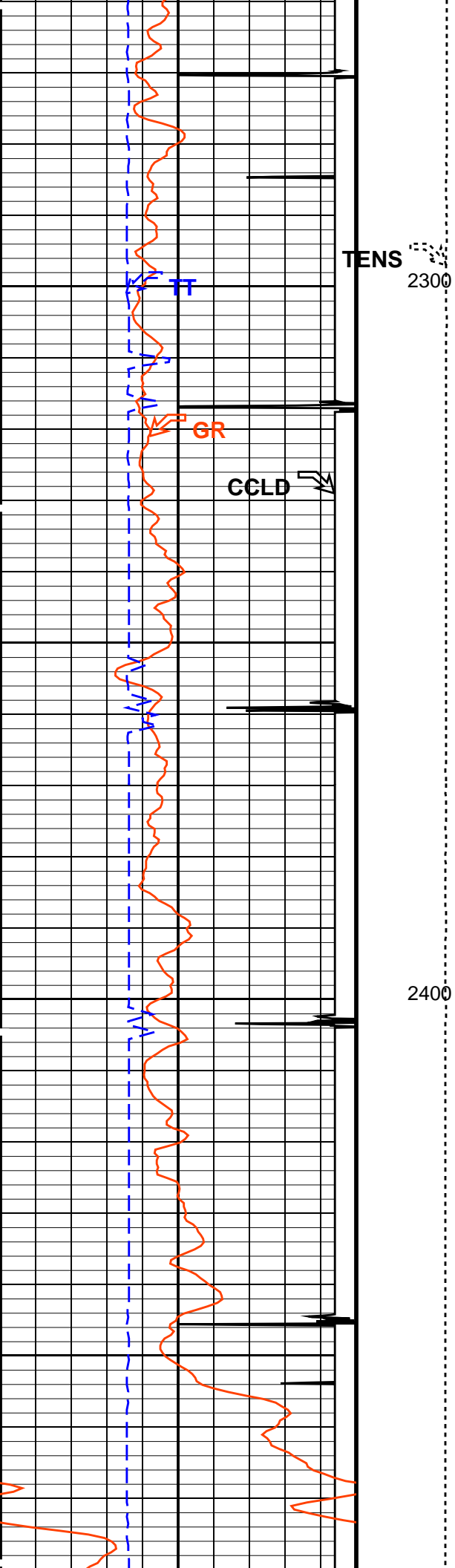
1600

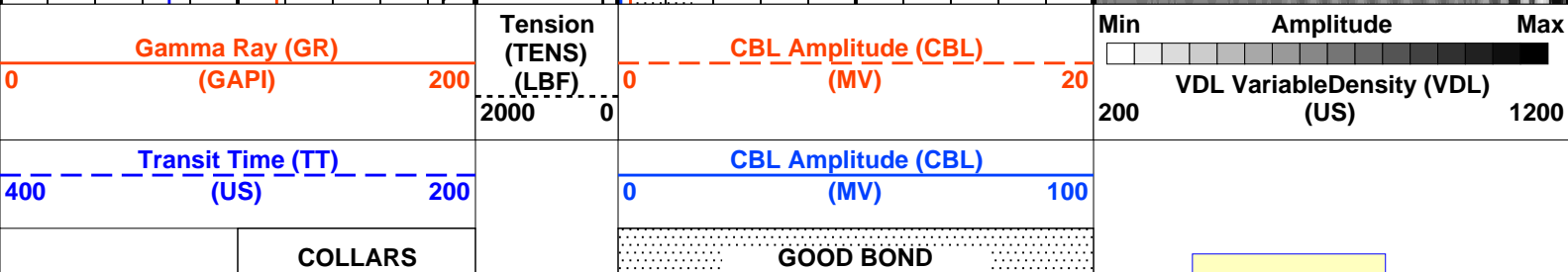
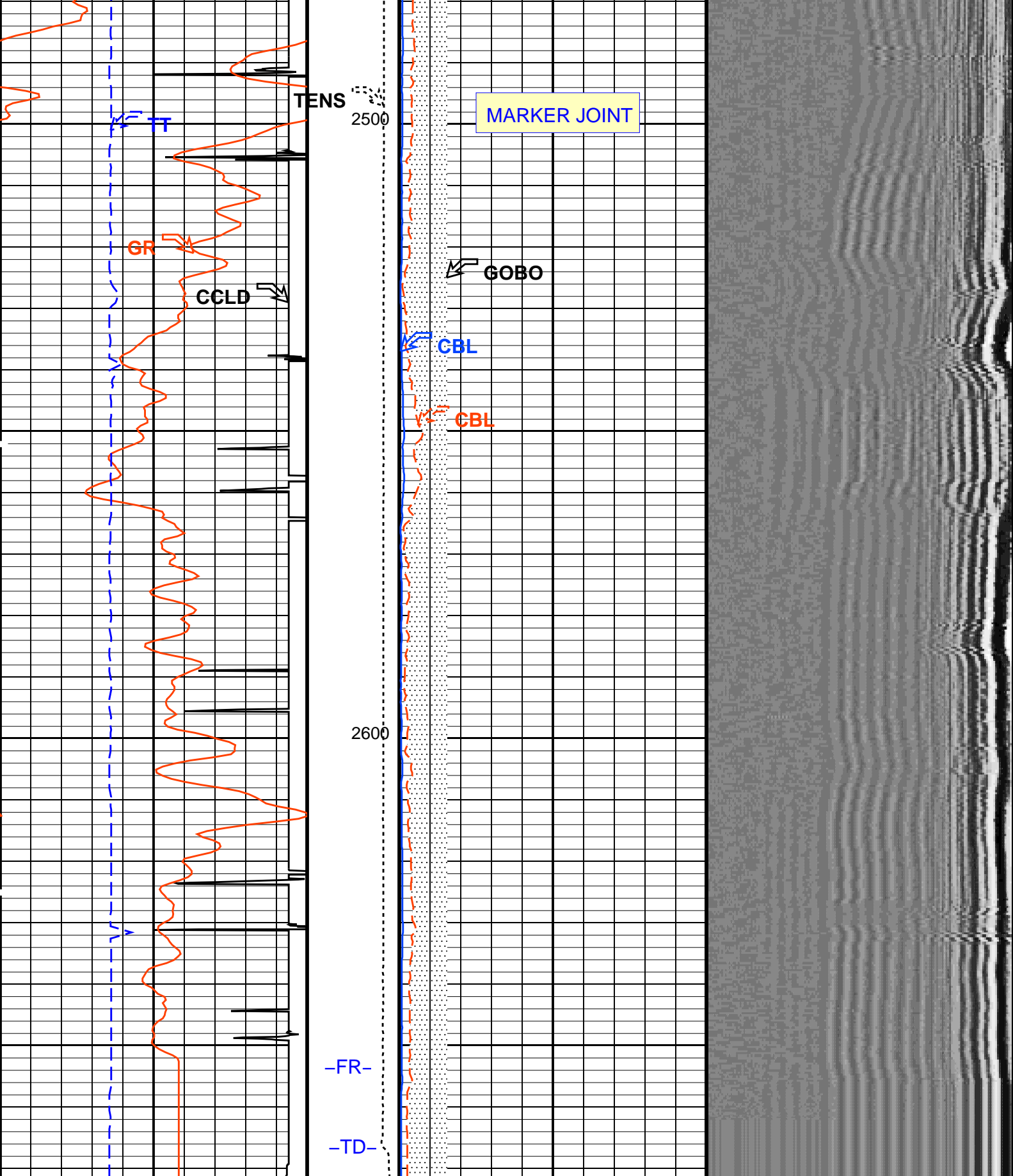












From CCLD to T1

From ACBL to GOBO

MAIN PASS

Discriminated CCL
(CCLD)

CASING PRESSURE 0 PSI

-3.5 (V) 0.5

PIP SUMMARY

Time Mark Every 60 S

Parameters

DLIS Name	Description	Value	
SCMT-CB: Slim Cement Mapping Tool, 1-11/16 OD			
BILI	Bond Index Level for Zone Isolation	0.8	
CB3D	SCMT CBL 3 ft Peak Detection Mode	PEAK	
CB3G	SCMT CBL 3 ft Peak Detection T0_Delay and Noise Gate	228.424	US
CB3T	SCMT CBL 3 ft Fixed Threshold Level	20	MV
CB5D	SCMT CBL 5 ft Peak Detection Mode	PEAK	
CB5G	SCMT CBL 5 ft Peak Detection T0_Delay and Noise Gate	342.424	US
CB5T	SCMT CBL 5 ft Fixed Threshold Level	20	MV
CBLG	CBL Gate Width	40	US
CBRA	CBL LQC Reference Amplitude in Free Pipe	80	MV
CMCF	CBL Cement Type Compensation Factor	1	
CMTC	SCMT Slow Channel Multiplexer Mode	SCAN	
CMTM	SCMT Operating Mode	LOG	
CSCS	SCMT Slow Channel Index	VCC	
CTHI	Casing Thickness	0.255617	IN
DTF	Delta-T Fluid	204.5	US/F
FATT	Acoustic Attenuation due to Fluid	0	DB/F
FCF	CBL Fluid Compensation Factor	1	
GOBO	Good Bond	1.53811	MV
MAPD	SCMT MAP Peak Detection Mode	PEAK	
MAPG	SCMT MAP Peak Detection T0_Delay and Noise Gate	171.424	US
MAPT	SCMT MAP Fixed Threshold Level	30	MV
MATT	Maximum Attenuation	16.5449	DB/F
MCCF	MAP Cement Type Compensation Factor	1	
MCI	Minimum Cemented Interval for Isolation	1.25	FT
MMSA	MAP Minimum Sonic Amplitude	4.27504	MV
MSA	Minimum Sonic Amplitude	0.572744	MV
PEDE	Peak Detection On/Off Switch in Playback	OFF	
VDLG	VDL Manual Gain	5	
ZCMT	Acoustic Impedance of Cement	6.8	MRAY
System and Miscellaneous			
CSIZ	Current Casing Size	4.500	IN
CWEI	Casing Weight	11.60	LB/F
DFD	Drilling Fluid Density	8.40	LB/G
TD	Total Depth	-50000	FT

Format: CBL_VDL Vertical Scale: 5" per 100'

Graphics File Created: 20-Apr-2011 13:54

OP System Version: 19C0-187

SCMT-CB 19C0-187 PSPT 19C0-187

Output DLIS Files

DEFAULT SCMT_PSP_006LUP FN:5 PRODUCER 20-Apr-2011 13:54

Company: Noble Energy Inc

Schlumberger

Well: Blach 22-6B

Field: Schramm

County: Yuma

State: Colorado

CEMENT BOND

GAMMA RAY

CASING COLLAR LOG