
XTO ENERGY INC EBUSINESS

Pargin 2 #36

La Plata County , Colorado

Cement Production Casing

30-Oct-2011

Job Site Documents

The Road to Excellence Starts with Safety

Sold To #: 353810	Ship To #: 2886684	Quote #:	Sales Order #: 9027102
Customer: XTO ENERGY INC EBUSINESS	Customer Rep: Niederhofer, Justin		
Well Name: Pargin	Well #: 2 #36	API/UWI #:	
Field:	City (SAP): IGNACIO	County/Parish: La Plata	State: Colorado
Contractor: AZTEC WELL SERVICE	Rig/Platform Name/Num: AWS 580		
Job Purpose: Cement Production Casing			
Well Type: Development Well	Job Type: Cement Production Casing		
Sales Person: KIDDOO, JUSTIN	Srv Supervisor: WOOD, BRANDON	MBU ID Emp #:	412753

Job Personnel

HES Emp Name	Exp Hrs	Emp #	HES Emp Name	Exp Hrs	Emp #	HES Emp Name	Exp Hrs	Emp #
AXT, STEPHEN Gary	12	434802	JOJOLA, LEMONT	12	418802	MARTIN, EHLER Dean	12	458474
WOOD, BRANDON M	12	412753						

Equipment

HES Unit #	Distance-1 way	HES Unit #	Distance-1 way	HES Unit #	Distance-1 way	HES Unit #	Distance-1 way
10011433C	59 mile	10025040	59 mile	10822043	59 mile	11223557	59 mile
11338239	59 mile	11583925	59 mile				

Job Hours

Date	On Location Hours	Operating Hours	Date	On Location Hours	Operating Hours	Date	On Location Hours	Operating Hours
TOTAL								

Total is the sum of each column separately

Job

Formation Name	Formation Depth (MD)	Top	Bottom	Form Type	Job depth MD	Job Depth TVD	Water Depth	Perforation Depth (MD)	From	To
				BHST	3275.8 ft	3226.3 ft				

Job Times

Date	Time	Time Zone
30 - Oct - 2011	00:00	MST
30 - Oct - 2011	03:30	MST
30 - Oct - 2011	00:00	MST
30 - Oct - 2011	00:00	MST
30 - Oct - 2011	00:00	MST

Well Data

Description	New / Used	Max pressure psig	Size in	ID in	Weight lbm/ft	Thread	Grade	Top MD ft	Bottom MD ft	Top TVD ft	Bottom TVD ft
7 7/8" Open Hole				7.875				465.	3278.	465.	3100.
5 1/2" Production Casing	Unknown		5.5	4.892	17.		J-55	.	3278.	.	3100.
8 5/8" Surface Casing	Unknown		8.625	8.097	24.		J-55	.	465.		

Sales/Rental/3rd Party (HES)

Description	Qty	Qty uom	Depth	Supplier
PLUG,CMTG,TOP,5 1/2,HWE,4.38 MIN/5.09 MA	1	EA		
SUGAR, GRANULATED, IMPERIAL	100	LB		

Tools and Accessories

Type	Size	Qty	Make	Depth	Type	Size	Qty	Make	Depth	Type	Size	Qty	Make
Guide Shoe					Packer					Top Plug			
Float Shoe					Bridge Plug					Bottom Plug			
Float Collar					Retainer					SSR plug set			
Insert Float										Plug Container			
Stage Tool										Centralizers			

Miscellaneous Materials

Gelling Agt	Conc	Surfactant	Conc	Acid Type	Qty	Conc	%
Treatment Fld	Conc	Inhibitor	Conc	Sand Type	Size	Qty	

Fluid Data									
Stage/Plug #: 1									
Fluid #	Stage Type	Fluid Name	Qty	Qty uom	Mixing Density lbm/gal	Yield ft ³ /sk	Mix Fluid Gal/sk	Rate bbl/min	Total Mix Fluid Gal/sk
1	MUD FLUSH	MUD FLUSH - ZI - SBM (13383)	20.00	bbl	8.4	.0	.0	.0	
2	PRB II Lead	PRB-2 - SBM (321500)	300.0	sacks	12.4	2.33	12.82		12.82
	0.125 lbm	POLY-E-FLAKE (101216940)							
	5 lbm	KOL-SEAL, 50 LB BAG (100064232)							
	0.4 %	FE-2 (100001615)							
	0.3 %	D-AIR 3000 (101007446)							
	12.821 Gal	FRESH WATER							
3	PRB II Tail	PRB-2 - SBM (321500)	100.0	sacks	13.5	1.84	9.11		9.11
	0.125 lbm	POLY-E-FLAKE (101216940)							
	5 lbm	KOL-SEAL, 50 LB BAG (100064232)							
	0.4 %	FE-2 (100001615)							
	0.3 %	D-AIR 3000 (101007446)							
	9.111 Gal	FRESH WATER							
4	H2O Displacement		75.00	bbl	8.3	.0	.0	.0	
Calculated Values		Pressures		Volumes					
Displacement		Shut In: Instant		Lost Returns		Cement Slurry		Pad	
Top Of Cement		5 Min		Cement Returns		Actual Displacement		Treatment	
Frac Gradient		15 Min		Spacers		Load and Breakdown		Total Job	
Rates									
Circulating		Mixing		Displacement		Avg. Job			
Cement Left In Pipe	Amount	42 ft	Reason	Shoe Joint					
Frac Ring # 1 @	ID	Frac ring # 2 @	ID	Frac Ring # 3 @	ID	Frac Ring # 4 @	ID		
The Information Stated Herein Is Correct				Customer Representative Signature					

The Road to Excellence Starts with Safety

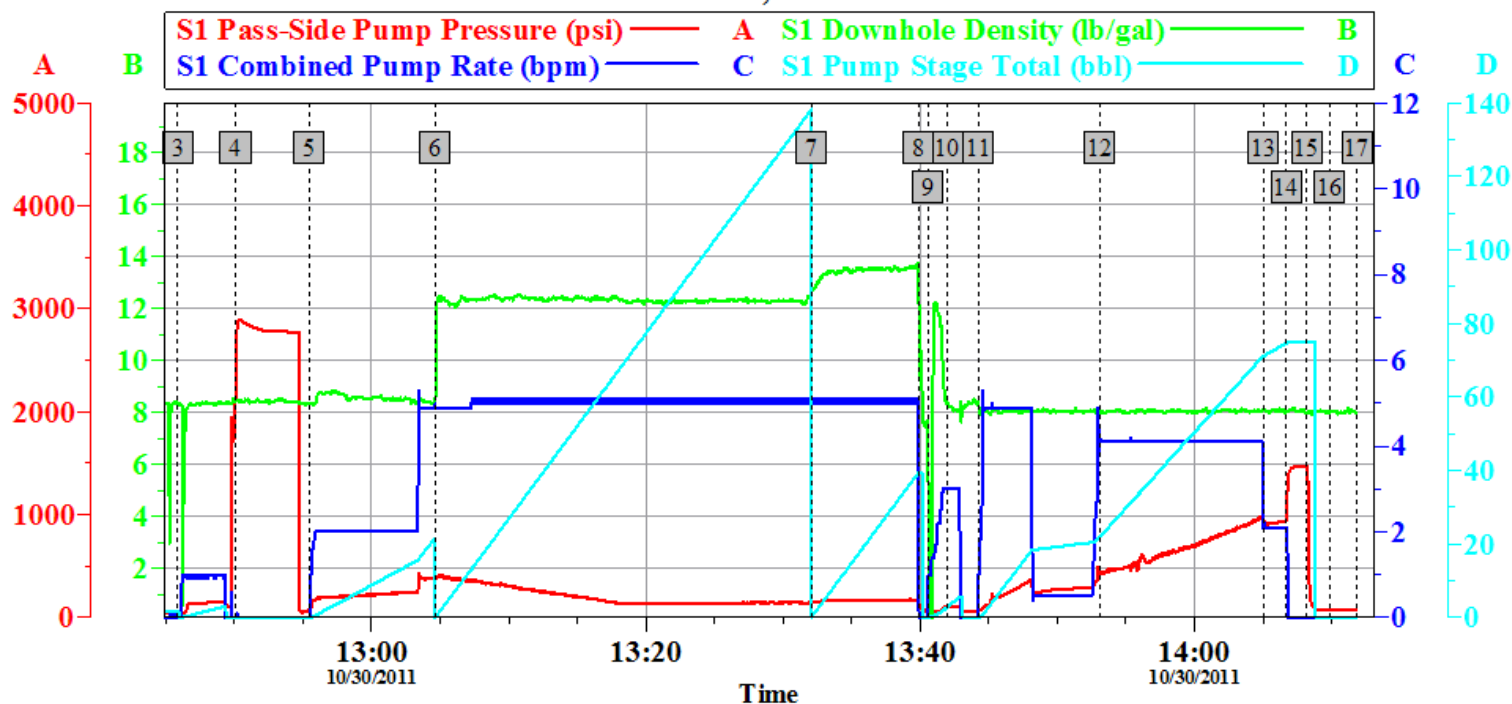
Sold To #: 353810	Ship To #: 2886684	Quote #:	Sales Order #: 9027102
Customer: XTO ENERGY INC EBUSINESS		Customer Rep: Niederhofer, Justin	
Well Name: Pargin	Well #: 2 #36	API/UWI #:	
Field:	City (SAP): IGNACIO	County/Parish: La Plata	State: Colorado
Legal Description:			
Lat: N 0 deg. OR N 0 deg. 0 min. 0 secs.		Long: E 0 deg. OR E 0 deg. 0 min. 0 secs.	
Contractor: AZTEC WELL SERVICE	Rig/Platform Name/Num: AWS 580		
Job Purpose: Cement Production Casing			Ticket Amount:
Well Type: Development Well		Job Type: Cement Production Casing	
Sales Person: KIDDOO, JUSTIN	Srv Supervisor: WOOD, BRANDON	MBU ID Emp #: 412753	

Activity Description	Date/Time	Cht #	Rate bbl/min	Volume bbl		Pressure psig		Comments
				Stage	Total	Tubing	Casing	
Call Out	10/30/2011 00:00							
Depart Yard Safety Meeting	10/30/2011 01:55							SAFETY MEETING INVOLVING THE CMT CREW
Crew Leave Yard	10/30/2011 02:00							
Arrive At Loc	10/30/2011 03:30							1- F-450 11583925, 1- RED TIGER PUMP TRUCK 11223557, 2- 660 BULK TRUCK TRAILERS 10025040, 10011433
Assessment Of Location Safety Meeting	10/30/2011 11:00							ASSESSMENT OF LOCATION INVOLVING THE CMT CREW
Pre-Rig Up Safety Meeting	10/30/2011 11:25							SAFETY MEETING INVOLVING THE ENTIRE CMT/ RIG CREW
Rig-Up Equipment	10/30/2011 11:30							
Pre-Job Safety Meeting	10/30/2011 12:30							SAFETY MEETING INVOLVING EVERYONE ON LOCATION
Start Job	10/30/2011 12:46							TP 3275.77 FT, FC 3226.27 FT, SJ 49.5 FT, 5 1/2 17 # J-55, 7 7/8 OH, SURFACE SET @ 465 FT 8 5/8 24 #
Test Lines	10/30/2011 12:50		1		0.2		3000.0	PRESSURE TEST GOOD TO 3000 PSI
Pump Spacer 1	10/30/2011 12:55		2		20		226.0	PUMP 20 BBL MUD FLUSH SPACER

Activity Description	Date/Time	Cht	Rate bbl/ min	Volume bbl		Pressure psig		Comments
		#		Stage	Total	Tubing	Casing	
Pump Lead Cement	10/30/2011 13:05		5		124.5		398.0	300 SKS, 2.33 YLD, 12.82 GAL H2O/SK, 124.5 BBLS @ 12.4 #, 91.6 BBLS H2O REQ
Pump Tail Cement	10/30/2011 13:32		5		32.8		164.0	100 SKS, 1.84 YLD, 9.11 GAL H2O/SK, 32.8 BBLS @ 13.5 #, 21.7 BBLS H2O REQ
Shutdown	10/30/2011 13:40							SHUT DOWN TO DROP TOP PLUG
Clean Lines	10/30/2011 13:40							PUMP WATER TO CLEAN LINES PRIOR TO DISPLACEMENT
Drop Top Plug	10/30/2011 13:42							TATTLE TAIL INDICATED PLUG LEFT THE PLUG CONTAINER
Pump Displacement	10/30/2011 13:44		5		74.8		125.0	CALCULATED 74.8 BBLS DISPLACEMENT, ACTUALLY PUMPED 75 BBLS ON TANKS MARK TO MARK TO BUMP PLUG
Cement Returns to Surface	10/30/2011 13:53				53			CALCULATED SHOULD CIRCULATE 53.3 BBLS CEMENT RETURNS TO SURFACE, ACTUALLY CIRCULATED 53 BBLS
Slow Rate	10/30/2011 14:05		2				908.0	SLOW RATE 2 BPM TO LAND THE PLUG
Bump Plug	10/30/2011 14:06		2				942.0	CALCULATED 738 PSI DIFFERENTIAL WHEN PLUG LANDS, PLUG BUMPED @ 942 PSI
Check Floats	10/30/2011 14:08						1472. 0	PRESSURED UP TO 1400 PSI, RELEASED PRESSURE FLOATS HELD, FLOWED BACK .25 BBLS
End Job	10/30/2011 14:12							GOOD CIRCULATION THROUGHOUT THE ENTIRE CMT JOB, NO PIPE MOVEMENT,
Pre-Rig Down Safety Meeting	10/30/2011 14:15							SAFETY MEETING INVOLVING THE CMT/RIG CREW
Rig-Down Equipment	10/30/2011 14:20							

Activity Description	Date/Time	Cht #	Rate bbl/ min	Volume bbl		Pressure psig		Comments
				Stage	Total	Tubing	Casing	
Safety Meeting - Departing Location	10/30/2011 15:25							SAFETY MEETING INVOLVING THE CMT CREW
Depart Location for Service Center or Other Site	10/30/2011 15:30							THANK YOU FOR USING HALLIBURTON, BRANDON WOOD AND CREW

XTO PARGIN 2 # 36, PRODUCTION



Global Event Log

3 Start Job	12:45:53	4 Test Lines	12:50:04	5 Pump Spacer 1	12:55:26
6 Pump Lead Cement	13:04:37	7 Pump Tail Cement	13:32:03	8 Shutdown	13:39:52
9 Clean Lines	13:40:34	10 Drop Top Plug	13:41:59	11 Pump Displacement	13:44:14
12 Cement Returns to Surface	13:53:04	13 Slow Rate	14:05:00	14 Bump Plug	14:06:41
15 Check Floats	14:08:10	16 End Job	14:09:50	17 Ending Job	14:11:50

Customer: XTO
Well Description: PARGIN 2 # 36
Customer Rep: RYAN RENSINK

Job Date: 30-Oct-2011
Job type: PRODUCTION
Service Supervisor: BRANDON WOOD

Sales Order #: 9027102
ADC Used: YES
Operator/ Pump: EHLER MARTIN, 11223557

OptiCem v6.3.4
30-Oct-11 15:09