

Nearest:  
 Building: 451' southeast  
 Above Ground Utility: 372' east  
 Public Road: 338' east  
 Property Line: 262' southeast  
 Railroad: 2,211' northwest

# Location Drawing

## Existing Well Data:

Dinner #1  
 Latitude: N 40.30713°  
 Longitude: W 104.73828°  
 FSL: 890'  
 FEL: 925'  
 EL: 4723'  
 PDOP: 1.8

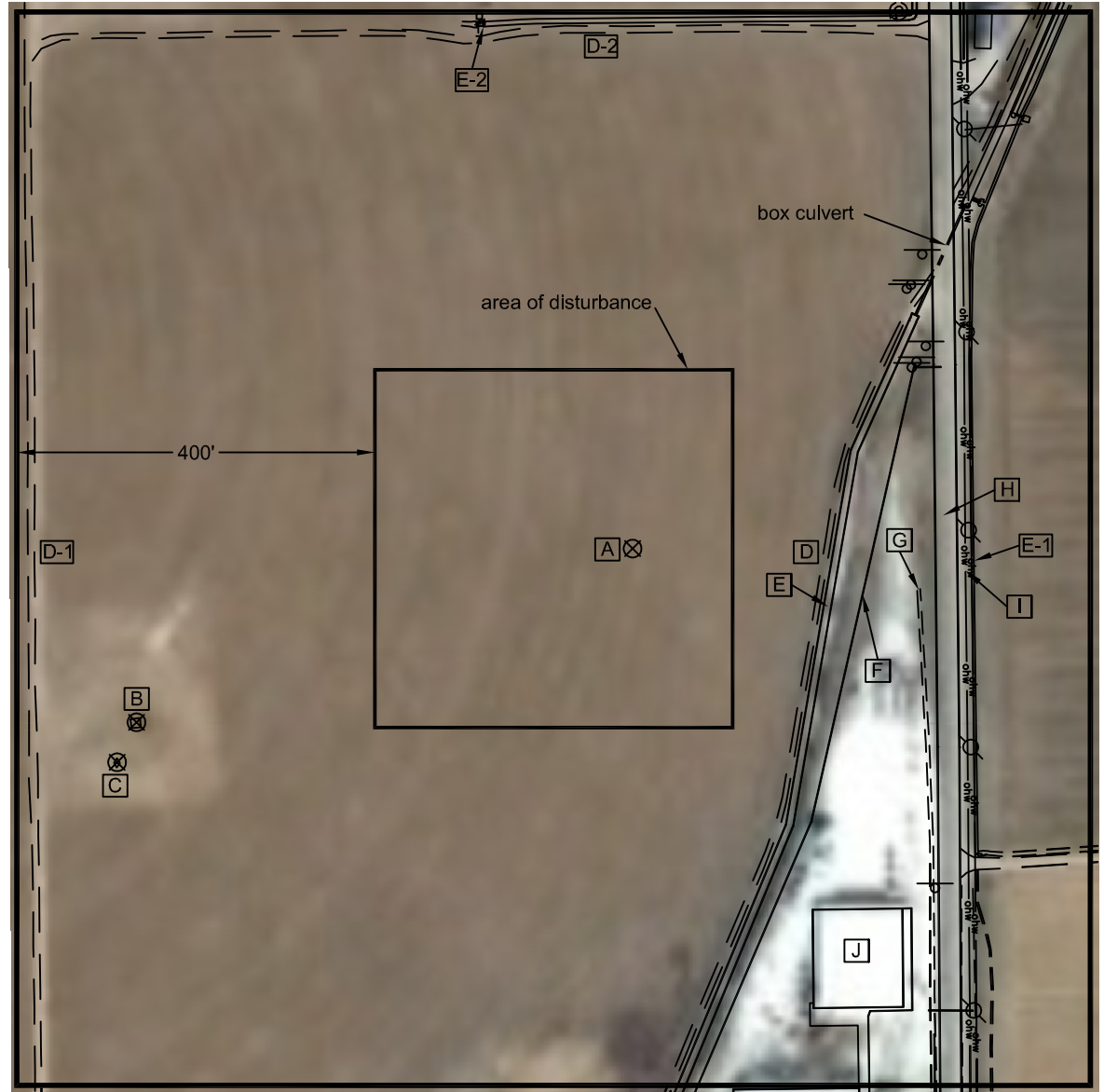
## Existing Well Data:

Dinner 4-14  
 Latitude: N 40.30725°  
 Longitude: W 104.73820°  
 FSL: 935'  
 FEL: 903'  
 EL: 4723'  
 PDOP: 1.3

## Proposed Well Data:

Dinner Federal 4A-14H  
 Latitude: N 40.30777°  
 Longitude: W 104.73620°  
 FSL: 1122'  
 FEL: 347'  
 ELEV: 4723'  
 PDOP: 1.4

Field observations taken  
 on 10/20/11 by operator  
 Tom Winans.



**Distances listed below  
 are measured from the  
 proposed Dinner Federal 4A-14H**

- [A] proposed Dinner Federal 4A-14H
- [B] existing Dinner 4-14, 588' southwest
- [C] existing Dinner #1, 624' southwest
- [D] access 211' southeast
- [D-1] access 669' west
- [D-2] access 576' north
- [E] concrete ditch 222' southeast
- [E-1] concrete ditch 381' east
- [E-2] concrete ditch/irrigation structure 607' northwest
- [F] property line 262' southeast
- [G] ditch 322' southeast
- [H] Weld County Road 35, 338' east
- [I] overhead utility line 372' east
- [J] building 451' southeast


## Legend:

- sign(buried utility/gas)
- ⊗ utility pole

**Dinner Federal SESE  
Pad Location Drawing**

Improvements extending  
400' from disturbance

Township 4 North, Range 66 West,  
Section 14: SE $\frac{1}{4}$  SE $\frac{1}{4}$   
Weld County, Colorado



Scale: 1"=200'

November 2, 2011

**PLS Group, LLC**  
 109 Coronado Ct. - Building No. 7  
 Fort Collins, Colorado 80525  
 P. 970-282-3446 Fx. 970-377-6767