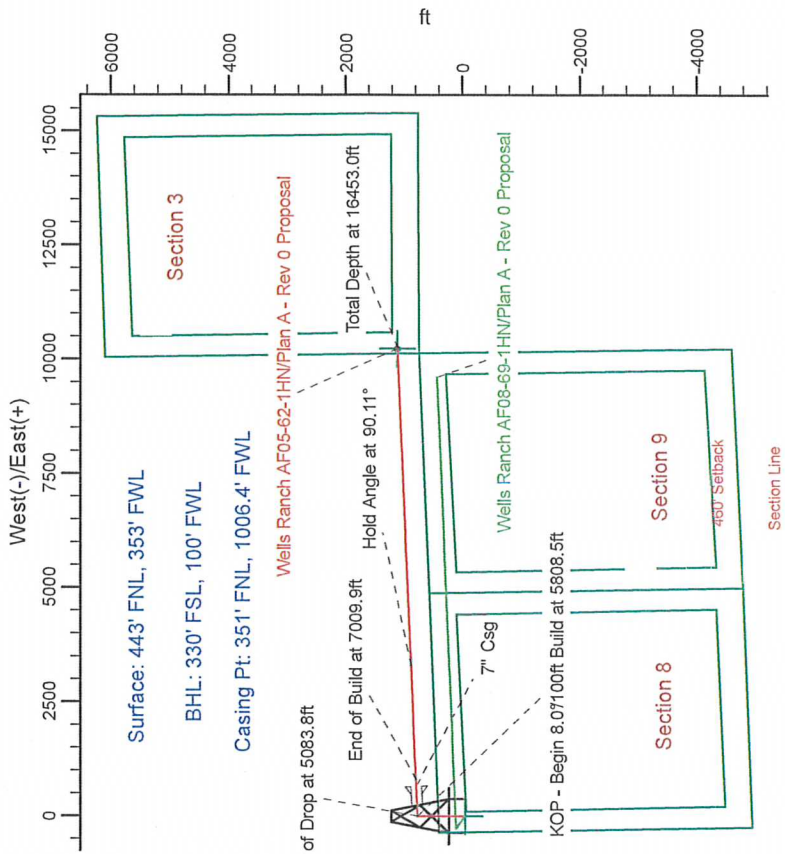
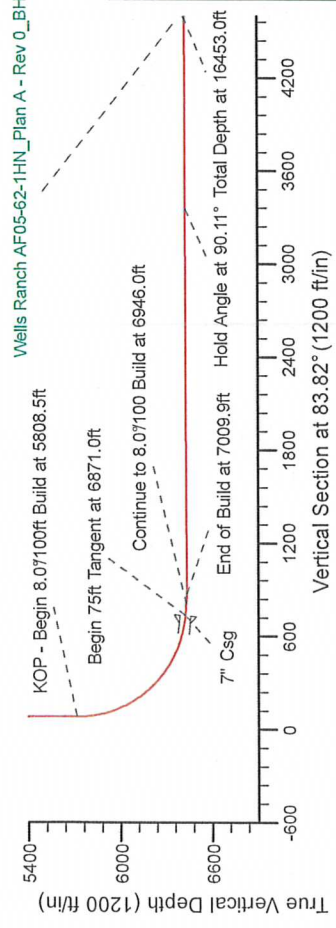
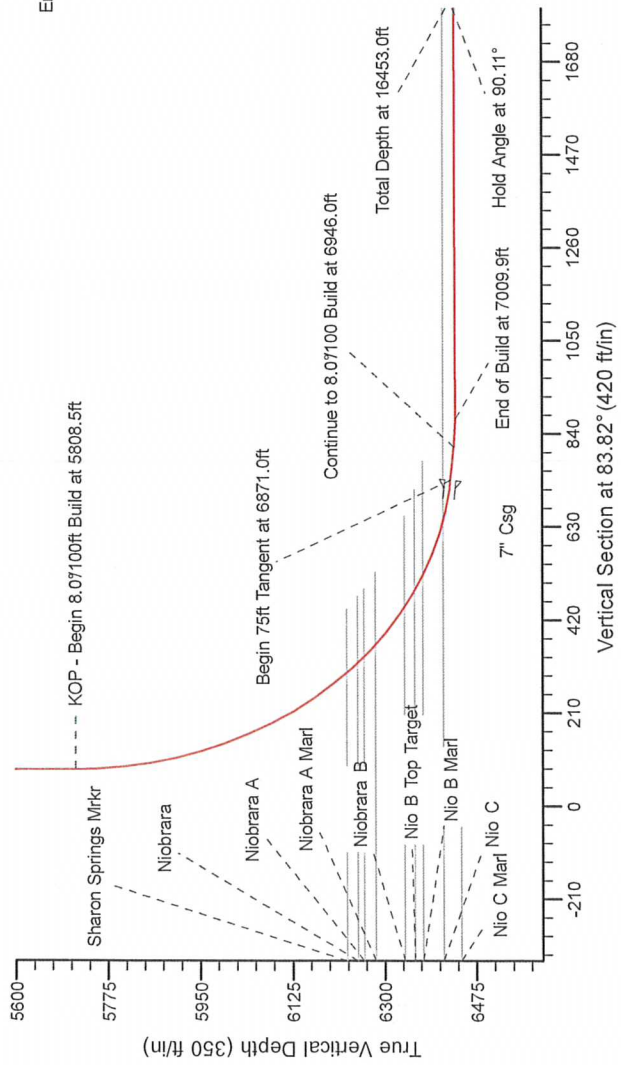


Project: Weld County Colorado (NAD 83)
Site: Sec.8, T5N, R62W
Well: Wells Ranch AF05-62-1HN
Wellbore: Plan A - Rev 0 (PERMITTING PLAN ONLY)
Design: Plan A - Rev 0 Proposal

SECTION DETAILS

Sec	MD	Inc	Azi	TVD	+N/S	+E/W	Dleg	TFace	Vsect	Target
1	0.0	0.0	0.0	0.0	0.0	0.0	0.0	0.0	0.0	0.0
2	1500.0	0.0	0.0	1500.0	0.0	0.0	0.0	0.0	0.0	0.0
3	2099.8	15.00	0.00	2093.0	78.0	0.0	0.0	0.0	0.0	8.4
4	4484.0	45.00	0.00	4396.0	696.0	0.0	2.50	0.00	0.00	74.8
5	5083.8	0.00	0.00	4989.0	773.0	0.0	0.0	180.00	83.2	83.2
6	5808.5	0.00	0.00	5713.7	773.0	0.0	0.0	0.00	83.2	83.2
7	6871.0	85.00	88.13	6427.1	794.3	653.4	8.00	88.13	735.1	735.1
8	6946.0	85.00	88.13	6433.7	796.8	728.1	0.00	0.00	809.6	809.6
9	7009.9	90.11	88.13	6436.4	798.9	791.9	8.00	0.00	873.2	873.2
10	16453.0	90.11	88.13	6418.2	1107.0	10229.9	0.00	0.00	10289.7	10289.7

Wells Ranch AF05-62-1HN_Plan A - Rev 0_BHL Tgt-



WELL DETAILS: Wells Ranch AF05-62-1HN(NAD83 Geodetic System)			
Northing	Easting	Ground Level	Longitude
426088.42	1011539.01	4654.0	104° 21' 19.296 W
Dip Angle: 67.13° Field Strength: 53166.5			
Plan: Plan A - Rev 0 Proposal (Wells Ranch AF05-62-1HN/Plan A - Rev 0 (PERMITTING PLAN ONLY))			
Created By: Erasmo Mendoza		Date: 12/31, November 07 2011	

