

Well Name: Keinath Federal 9-14H (C100U)



Location: Piceance Basin, Colorado
 Field: Orchard
 API#: 05045202060000
 Surface Location: NENW Sec 10-T8S-R96W 6th PM
 BH Location: SESW Sec 9-T8S-R96W 6th PM
 KB: 22 ft
 TD: 14,225 ft
 Float Collar: 14,110 ft
 80 deg Dev @: 9275 ft
 KOP: 8350 ft
 Average TVD: 8846 ft

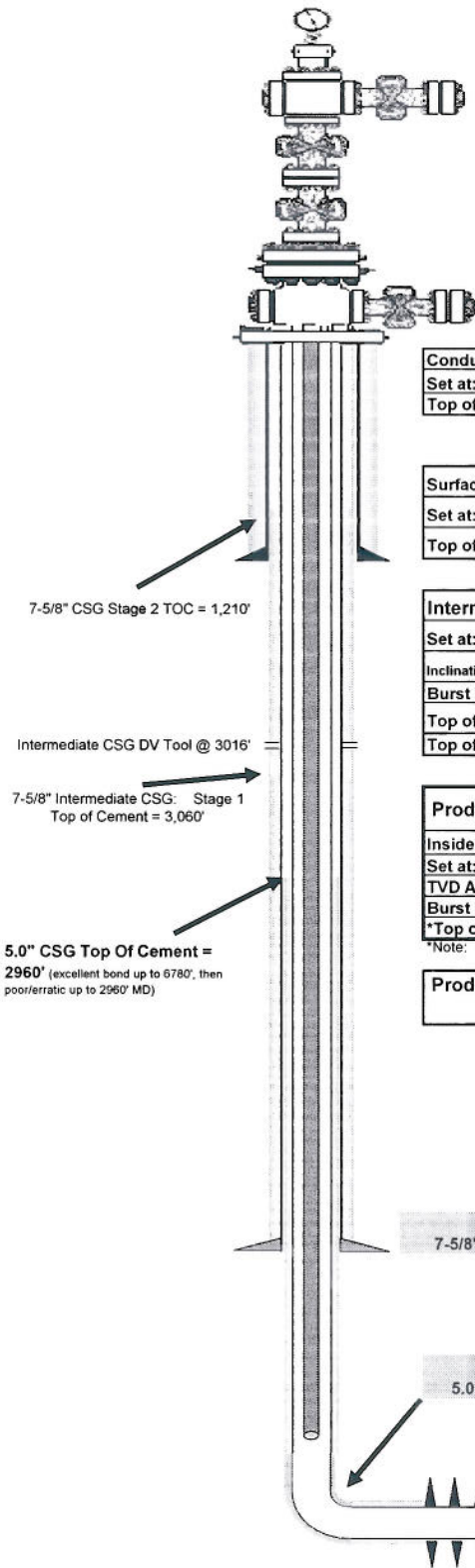
Conductor:	20.0" 53# A53D Grade
Set at:	40 ft
Top of Cement:	Surface

Surface Casing:	10.75" 40.5# J-55 ST&C
Set at:	1,532 ft
Top of Cement:	Surface

Intermediate Casing:	7-5/8" 29.7# P110 LT&C
Set at:	7,898 ft
Inclination at Intern. CSG Point:	2.5 deg
Burst Pressure:	9,470 psi (75% = 7,102 psi)
Top of Cement (Stage1):	3,060 ft DV Tool: 3016' MD
Top of Cement (Stage 2):	1,210 ft

Production Casing:	5.0" 23.2# P110EC VAM SFC
Inside Diameter:	4.044" Drift: 3.919"
Set at:	14,197 ft
TVD Average:	8,846 ft
Burst Pressure:	20,910 psi (75% = 15,682 psi)
*Top of Cement:	2,960 ft (from 8/12/11 CBL)

Production Tubing:	278 JTS 2-3/8" 4.7# L-80 EUE TBG
Set at:	9,127' MD on 10/14/2011



7-5/8" Intermediate CSG set @ 7,898' MD

5.0" 23.2# P110 VAM SFC Production CSG

Float Collar =	14,110	ft
End of CSG =	14,197	ft
Total MD =	14,225	ft

Niobrara Perfs from 8,648' to 13,768'