

# T6S, R96W, 6th P.M.

## BERRY PETROLEUM COMPANY

Well location, SCHOOL HOUSE POINT OM10A K15 696, located as shown in the NE 1/4 SW 1/4 of Section 15, T6S, R96W, 6th P.M., Garfield County, Colorado.

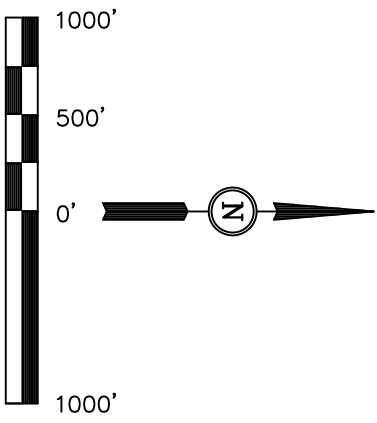
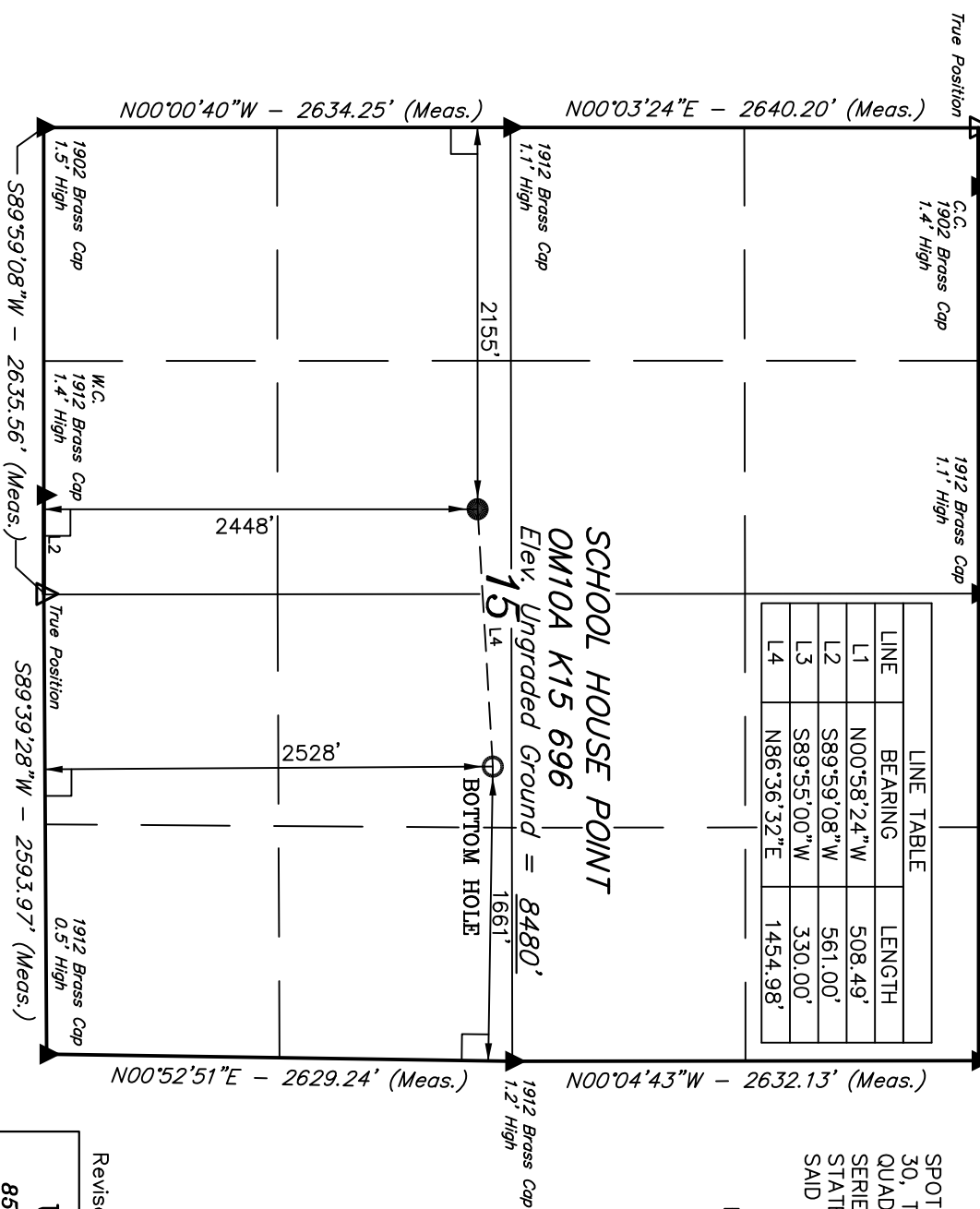
### BASIS OF ELEVATION

SPOT ELEVATION AT THE NORTHWEST CORNER OF SECTION 30, T5S, R95W, 6th P.M. TAKEN FROM THE FORKED GULCH QUADRANGLE, COLORADO, GARFIELD COUNTY, 7.5 MINUTE SERIES (TOPOGRAPHICAL MAP) PUBLISHED BY THE UNITED STATES DEPARTMENT OF THE INTERIOR, GEOLOGICAL SURVEY. SAID ELEVATION IS MARKED AS BEING 5966 FEET.

### BASIS OF BEARINGS

BASIS OF BEARINGS IS A G.P.S. OBSERVATION.

LINE	BEARING	LENGTH
L1	N00°58'24"W	508.49'
L2	S89°59'08"W	561.00'
L3	S89°55'00"W	330.00'
L4	N86°36'32"E	1454.98'



THIS IS TO CERTIFY THAT THE ABOVE PLAT WAS PREPARED FROM FIELD NOTES OF ACTUAL SURVEYS MADE BY ME OR UNDER MY SUPERVISION AND THAT THE SAME ARE TRUE AND CORRECT TO THE BEST OF MY KNOWLEDGE AND BELIEF.

*Bert L. K...*  
 REGISTERED LAND SURVEYOR  
 REGISTRATION NO. 17492  
 STATE OF COLORADO

Revised: 03-31-08 D.R.B.  
**UINTAH ENGINEERING & LAND SURVEYING**  
 85 SOUTH 200 EAST - VERNAL, UTAH 84078  
 (435) 789-1017

**LEGEND:**

- = 90° SYMBOL
- = PROPOSED WELL HEAD.
- ▲ = SECTION CORNERS LOCATED.

NAD 83 (TARGET BOTTOM HOLE)	NAD 83 (SURFACE LOCATION)	PDOP = 1.3
LATITUDE = 39°31'21.77" (39.522714)	LATITUDE = 39°31'20.92" (39.522478)	SCALE 1" = 1000'
LONGITUDE = 108°05'30.82" (108.091894)	LONGITUDE = 108°05'49.35" (108.097042)	PARTY S.H. B.H. D.R.B.
NAD 27 (TARGET BOTTOM HOLE)	NAD 27 (SURFACE LOCATION)	WEATHER WARM
LATITUDE = 39°31'21.85" (39.522736)	LATITUDE = 39°31'21.00" (39.522500)	FILE BERRY PETROLEUM COMPANY
LONGITUDE = 108°05'28.54" (108.091261)	LONGITUDE = 108°05'47.07" (108.096408)	DATE SURVEYED: 04-30-07
		DATE DRAWN: 07-18-07
		REFERENCES G.L.O. PLAT