

HYDROLOGY MAP

Operator: Rosewood Resources, Inc.

Well Name: Tuell 23-03

Location: Yuma, Colorado (NESW Sec. 3, T3N R46W. 1641' FSL & 1764' FWL)

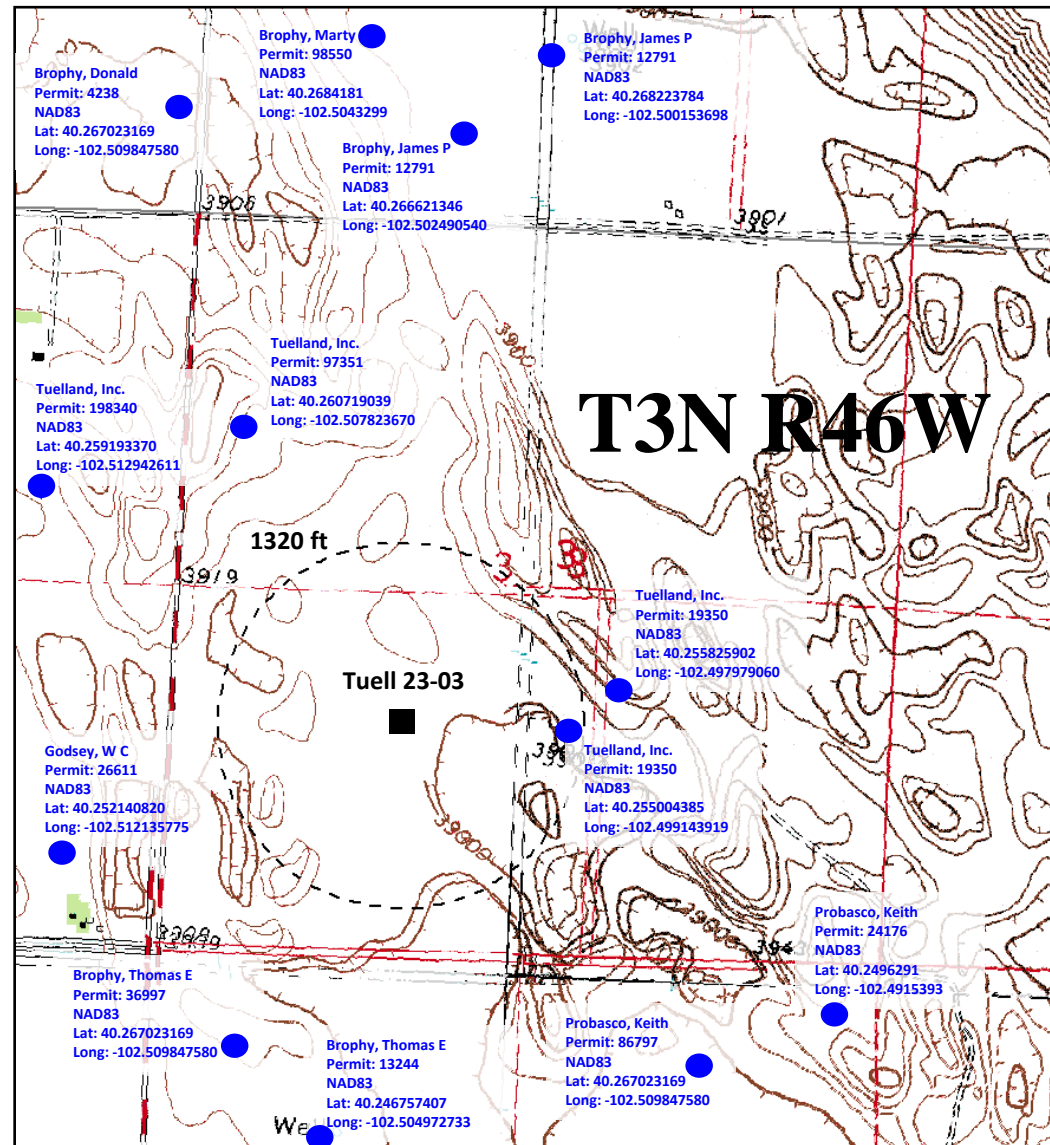
Colorado North (NAD 83)

Latitude: 40.25494

X: 3836219.09

Longitude: -102.50337

Y: 1349846.98



NOTE:

- 1) Nearest railroad ± 10 miles to South
- 2) Nearest river- Rock Creek- ±5 miles Northwest
- 3) Nearest body of water-Derring Lake- ±15.2 miles Southwest
- 4) Nearest improvement 0.2 miles Northeast (pivot head)
- 5) Nearest OHP 0.3 miles South