

HYDROLOGY MAP

Operator: Rosewood Resources, Inc.

Well Name: Tuell 24-03

Location: Yuma, Colorado (SESW Sec. 3, T3N R46W. 461' FSL & 2384' FWL)

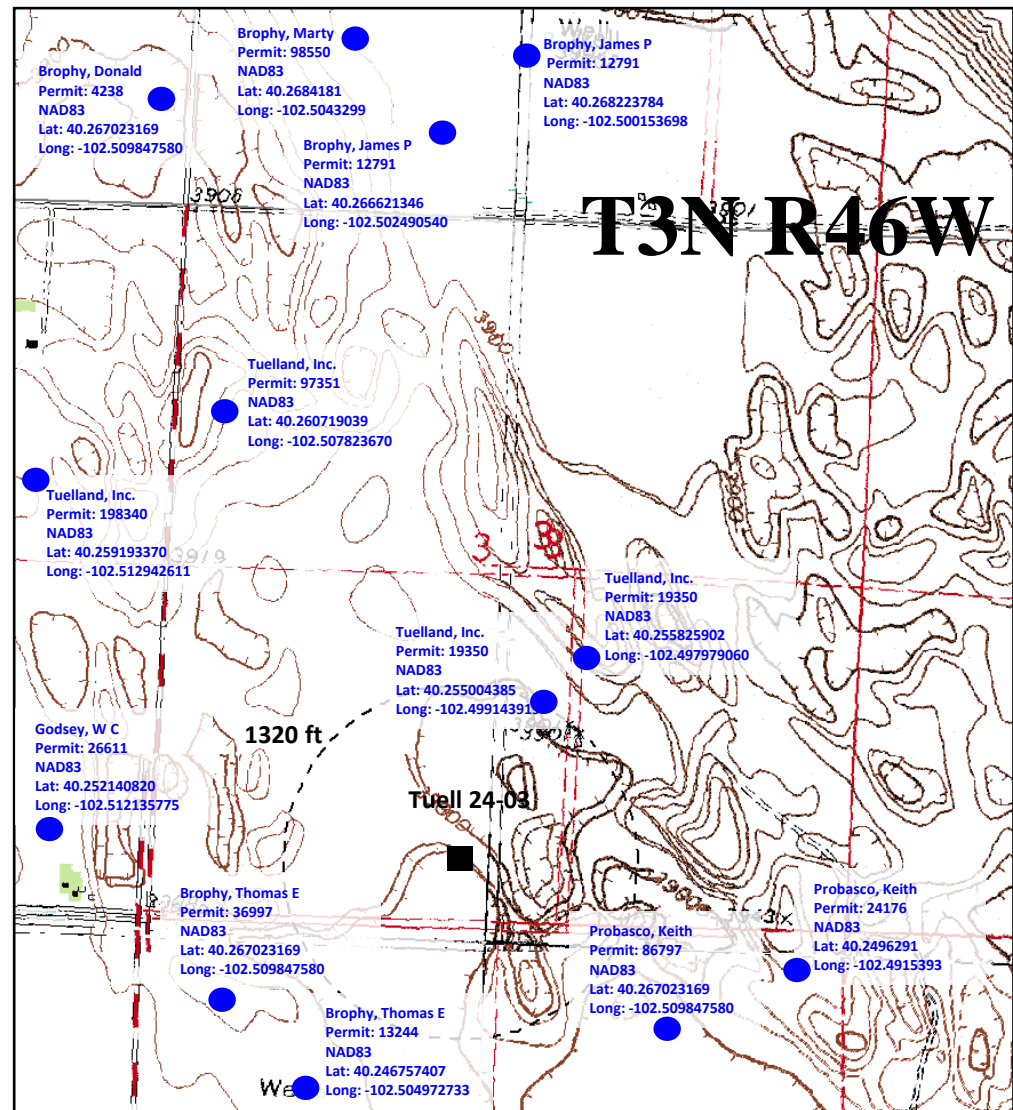
Colorado North (NAD 83)

Latitude: 40.25173

X: 3836869.52

Longitude: -102.50118

Y: 1348698.95



NOTE:

- 1) Nearest railroad \pm 9.4 miles to South
- 2) Nearest river- Rock Creek- \pm 6.8 miles Northwest
- 3) Nearest body of water- Derring Lake- \pm 15.4 miles Southwest
- 4) Nearest overhead power \pm 460' South