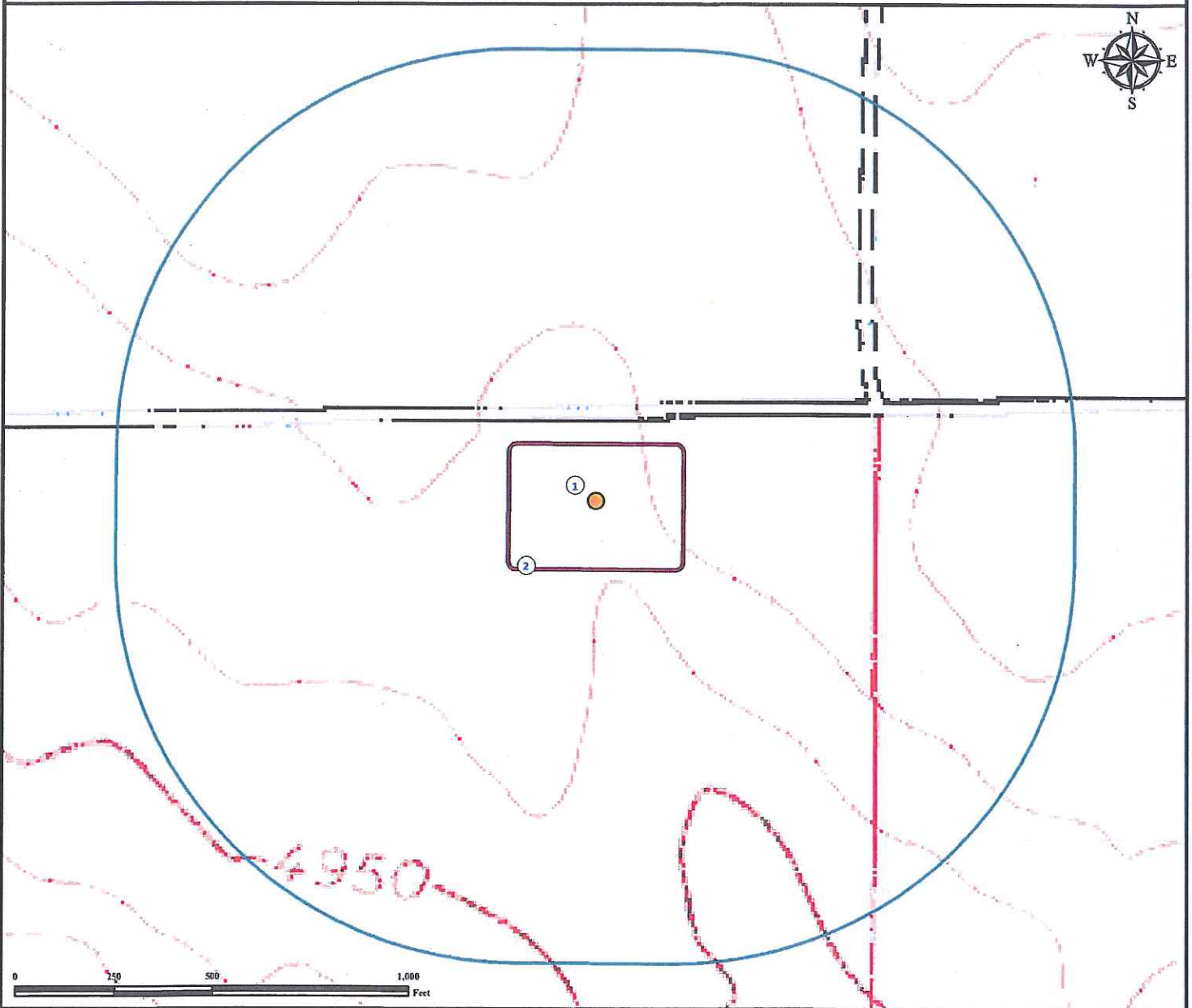


# Hydrology Map

## BUCHNER 1-2H

NE¼ NE¼ SECTION 2, TOWNSHIP 7 NORTH, RANGE 60 WEST OF THE 6TH PRINCIPAL MERIDIAN



1. Proposed well BUCHNER 1-2H.

2. Operational disturbance area.

There are no surface waters within a 1000' radius of the disturbance area of the proposed oil and gas location.

### Legend

- Proposed Well
- Disturbance Area
- 1000' Radius

### Reference Location

\*\* All Measurements are Made from Reference Well BUCHNER 1-2H \*\*

Lat: 40.610888° Long: -104.052296° (NAD83)  
Elevation: 4931 Feet



Use our resources to find yours!  
[www.petro-fs.com](http://www.petro-fs.com)  
(303) 928-7128

Field Date: 10/28/2011  
Drafting Date: 11/01/2011  
Drafter: DMM  
Checked By: BHF

Data Sources:  
TOPO courtesy USGS

Prepared for:

