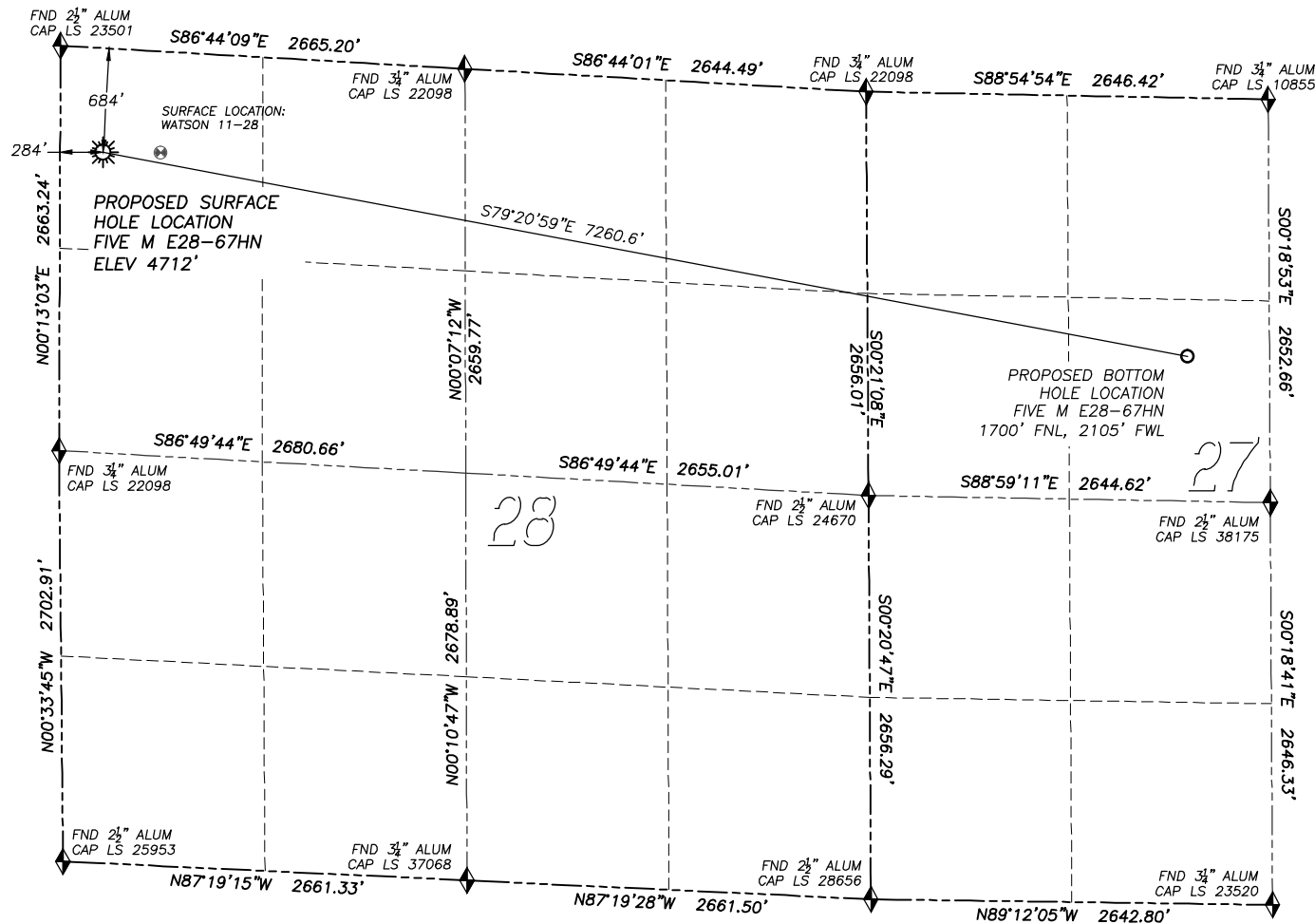


DALEY LAND SURVEYING, INC. PARKER, CO. 80134 303 953 9841
WELL LOCATION CERTIFICATE – FIVE M E28-67HN
SECTION 28, TOWNSHIP 6 NORTH, RANGE 65 WEST OF THE 6TH PRINCIPAL MERIDIAN



NAD 83 LATITUDE AND LONGITUDE

FIVE M E28-67HN SURFACE HOLE:

LATITUDE: N40.46333°
LONGITUDE: W104.67697°
ELEVATION: 4712'
FOOTAGE: 684' FNL, 284' FWL
PDOP: 1.7
QTR/QTR: NW4/NW4
PROP LINE: 254'± WEST

BOTTOM HOLE:

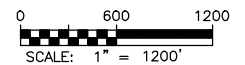
LATITUDE: N40.45966°
LONGITUDE: W104.65133°
FOOTAGE: 1700' FNL, 2105' FWL
OF SECTION 27

NEAREST EXISTING WELL:

WATSON 11-28 SURFACE HOLE
LATITUDE: N40.46332°
LONGITUDE: W104.67561°
ELEVATION: 4721'
379' EAST

LEGEND

- ◆ FOUND MONUMENT AS DESCRIBED
- ★ PROPOSED WELL
- EXISTING WELL
- BOTTOM HOLE



IN ACCORDANCE WITH A REQUEST FROM NATE McCORKELL OF NOBLE ENERGY INC., DALEY LAND SURVEYING, INC. HAS DETERMINED THE SURFACE LOCATION OF THE FIVE M E28-67HN WELL TO BE 684' FNL, 284' FWL, AS MEASURED AT NINETY (90) DEGREES FROM THE SECTION LINES OF SECTION 28, TOWNSHIP 6 NORTH, RANGE 65 WEST OF THE 6TH PRINCIPAL MERIDIAN, WELD COUNTY, COLORADO. THE BOTTOM HOLE LOCATION, PROVIDED BY THE CLIENT, IS TO BE 1700' FNL, 2105' FWL OF SECTION 27, T.6N., R.65W.

I HEREBY CERTIFY THAT THIS WELL LOCATION CERTIFICATE WAS PREPARED BY ME OR UNDER MY DIRECT SUPERVISION, THAT THE WORK WAS COMPLETED ON 6/30/2011 FOR AND ON BEHALF OF NOBLE ENERGY, INC., AND THAT THIS MAP DOES NOT REPRESENT A BOUNDARY SURVEY, IT IS NOT A LAND SURVEY PLAT OR AN IMPROVEMENT SURVEY PLAT AND IT IS NOT TO BE RELIED UPON FOR THE ESTABLISHMENT OF FENCE, BUILDING OR OTHER FUTURE IMPROVEMENT LINES.

NOTES:

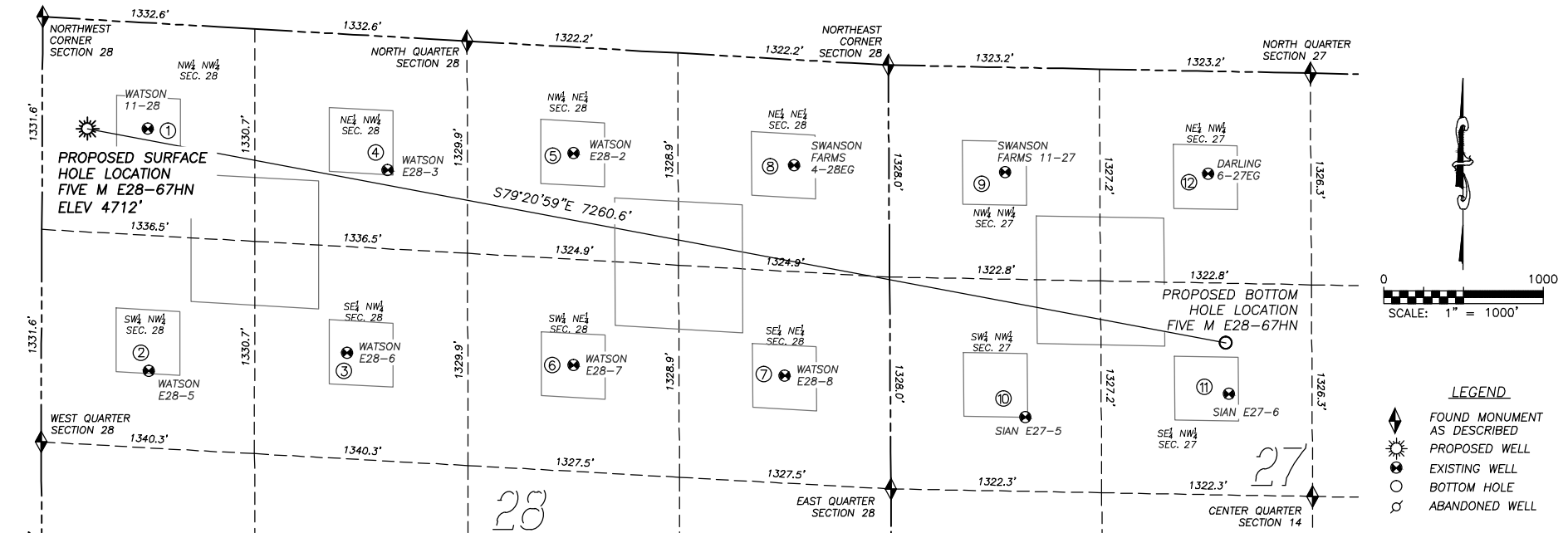
- 1) BEARINGS FOR THIS MAP ARE ASSUMED AND BASED UPON GPS OBSERVATIONS MADE BETWEEN MONUMENTS LOCATED AT THE NORTHWEST CORNER AND WEST QUARTER CORNER OF SECTION 28, T.6N., R.65W.
- 2) HORIZONTAL DATUM IS NAD83.
- 3) VERTICAL DATUM IS NAVD88. ELEVATIONS ARE DERIVED FROM GPS OBSERVATIONS PROCESSED THROUGH OPUS, UTILIZING THE GEOID09 MODEL.
- 4) SEE LOCATION DRAWING FOR VISIBLE IMPROVEMENTS WITHIN 600' OF PROPOSED SURFACE HOLE LOCATION.
- 5) SURFACE USE: AGRICULTURE.



FOR AND ON BEHALF OF
DALEY LAND SURVEYING INC.,
Robert Daley, PLS 35597

SITE SKETCH – FIVE M E28-67HN

SECTION 28, TOWNSHIP 6 NORTH, RANGE 65 WEST OF THE 6TH PRINCIPAL MERIDIAN



① **WATSON 11-28**
NW/NW SEC. 28
664' FNL, 663' FWL
LAT. N40.46332'
LONG. W104.67561'
EL: 4721'
PDOP 2.6

② **WATSON E28-5**
SW/NW SEC. 28
2177' FNL, 674' FWL
LAT. N40.45917'
LONG. W104.67558'
EL: 4718'
PDOP 2.4

③ **WATSON E28-6**
SE/NW SEC. 28
1993' FNL, 1917' FWL
LAT. N40.45948'
LONG. W104.67111'
EL: 4717'
PDOP 2.6

④ **WATSON E28-3**
NE/NW SEC. 28
836' FNL, 2168' FWL
LAT. N40.46262'
LONG. W104.67020'
EL: 4710'
PDOP 1.8

⑤ **WATSON E28-2**
NW/NE SEC. 28
665' FNL, 1976' FEL
LAT. N40.46291'
LONG. W104.66602'
EL: 4704'
PDOP 2.0

⑥ **WATSON E28-7**
SW/NE SEC. 28
1990' FNL, 1984' FEL
LAT. N40.45927'
LONG. W104.66601'
EL: 4700'
PDOP 2.4

⑦ **WATSON E28-8**
SE/NE SEC. 28
1980' FNL, 660' FEL
LAT. N40.45909'
LONG. W104.66125'
EL: 4695'
PDOP 2.0

⑧ **SWANSON FARMS 4-28EG**
NE/NE SEC. 28
661' FNL, 594' FEL
LAT. N40.46271'
LONG. W104.656105'
EL: 4701'
PDOP 1.5

⑨ **SWANSON FARMS 11-27**
NW/NW SEC. 27
657' FNL, 730' FWL
LAT. N40.46260'
LONG. W104.65629'
EL: 4702'
PDOP 1.5

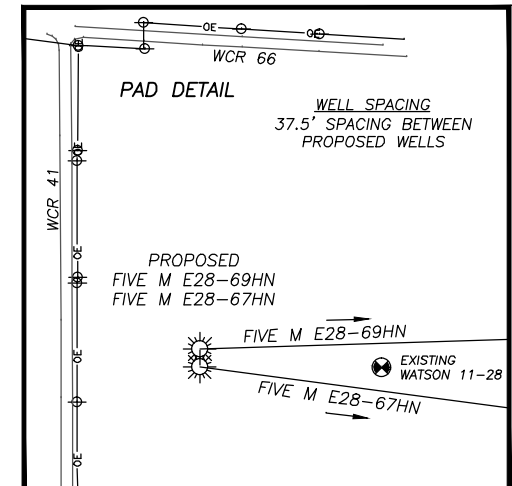
⑩ **SIAN E27-5**
SW/NW SEC. 27
2190' FNL, 847' FWL
LAT. N40.45838'
LONG. W104.65583'
EL: 4695'
PDOP 2.0

⑪ **SIAN E27-6**
SE/NW SEC. 27
2020' FNL, 2124' FWL
LAT. N40.45879'
LONG. W104.65125'
EL: 4715'
PDOP 2.2

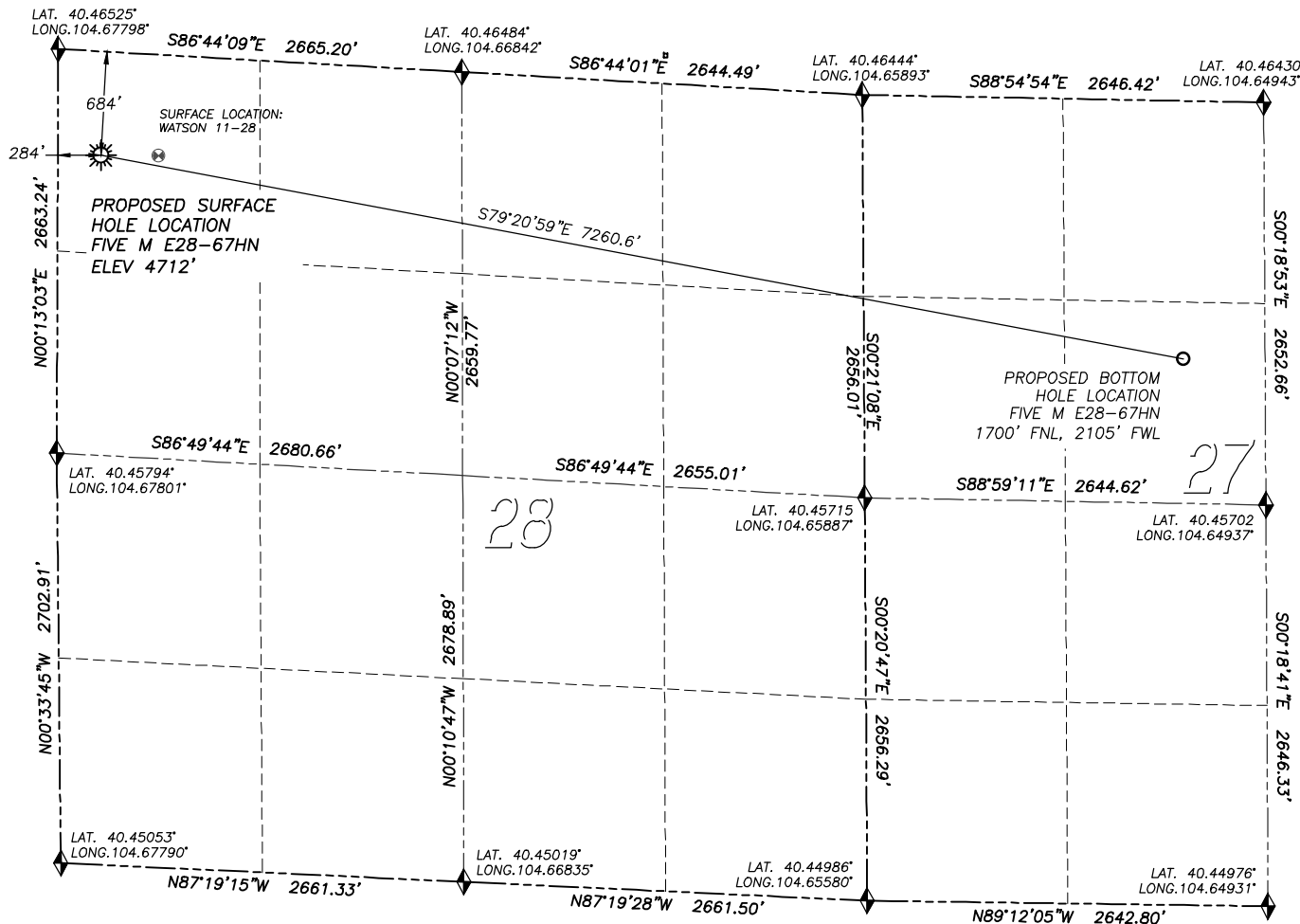
⑫ **DARLING 6-27EG**
NE/NW SEC. 27
643' FNL, 2001' FWL
LAT. N40.46257'
LONG. W104.65172'
EL: 4716'
PDOP 2.0

NOTES:

- 1) THIS DOES NOT REPRESENT A BOUNDARY SURVEY
- 2) THE LATITUDES AND LONGITUDES SHOWN ARE REFERENCED TO NAD83
- 3) DATUM FOR ELEVATION IS NAVD88. ELEVATIONS ARE DERIVED FROM GPS-RTK OBSERVATIONS PROCESSED THROUGH OPUS, UTILIZING THE GEOID09 MODEL.



DALEY LAND SURVEYING, INC. PARKER, CO. 80134 303 953 9841
WELL LOCATION CERTIFICATE – FIVE M E28–67HN
SECTION 28, TOWNSHIP 6 NORTH, RANGE 65 WEST OF THE 6TH PRINCIPAL MERIDIAN



NAD 83 LATITUDE AND LONGITUDE

FIVE M E28–67HN SURFACE HOLE:

LATITUDE: N40.46333°
LONGITUDE: W104.67697°
ELEVATION: 4712'
FOOTAGE: 684' FNL, 284' FWL
PDOP: 1.7
QTR/QTR: NW4/NW4
PROP LINE: 254'± WEST

BOTTOM HOLE:

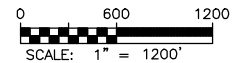
LATITUDE: N40.45966°
LONGITUDE: W104.65133°
FOOTAGE: 1700' FNL, 2105' FWL
OF SECTION 27

NEAREST EXISTING WELL:

WATSON 11–28 SURFACE HOLE
LATITUDE: N40.46332°
LONGITUDE: W104.67561°
ELEVATION: 4721'
379' EAST

LEGEND

- ◆ FOUND MONUMENT AS DESCRIBED
- ☼ PROPOSED WELL
- EXISTING WELL
- BOTTOM HOLE



IN ACCORDANCE WITH A REQUEST FROM NATE McCORKELL OF NOBLE ENERGY INC., DALEY LAND SURVEYING, INC. HAS DETERMINED THE SURFACE LOCATION OF THE **FIVE M E28–67HN** WELL TO BE 684' FNL, 284' FWL, AS MEASURED AT NINETY (90) DEGREES FROM THE SECTION LINES OF SECTION 28, TOWNSHIP 6 NORTH, RANGE 65 WEST OF THE 6TH PRINCIPAL MERIDIAN, WELD COUNTY, COLORADO. THE BOTTOM HOLE LOCATION, PROVIDED BY THE CLIENT, IS TO BE 1700' FNL, 2105' FWL OF SECTION 27, T.6N., R.65W.

I HEREBY CERTIFY THAT THIS WELL LOCATION CERTIFICATE WAS PREPARED BY ME OR UNDER MY DIRECT SUPERVISION, THAT THE WORK WAS COMPLETED ON 6/30/2011 FOR AND ON BEHALF OF NOBLE ENERGY, INC., AND THAT THIS MAP DOES NOT REPRESENT A BOUNDARY SURVEY, IT IS NOT A LAND SURVEY PLAT OR AN IMPROVEMENT SURVEY PLAT AND IT IS NOT TO BE RELIED UPON FOR THE ESTABLISHMENT OF FENCE, BUILDING OR OTHER FUTURE IMPROVEMENT LINES.

NOTES:

- 1) BEARINGS FOR THIS MAP ARE ASSUMED AND BASED UPON GPS OBSERVATIONS MADE BETWEEN MONUMENTS LOCATED AT THE NORTHWEST CORNER AND WEST QUARTER CORNER OF SECTION 28, T.6N., R.65W.
- 2) HORIZONTAL DATUM IS NAD83.
- 3) VERTICAL DATUM IS NAVD88. ELEVATIONS ARE DERIVED FROM GPS OBSERVATIONS PROCESSED THROUGH OPUS, UTILIZING THE GEOID09 MODEL.
- 4) SEE LOCATION DRAWING FOR VISIBLE IMPROVEMENTS WITHIN 600' OF PROPOSED SURFACE HOLE LOCATION.
- 5) SURFACE USE: AGRICULTURE.

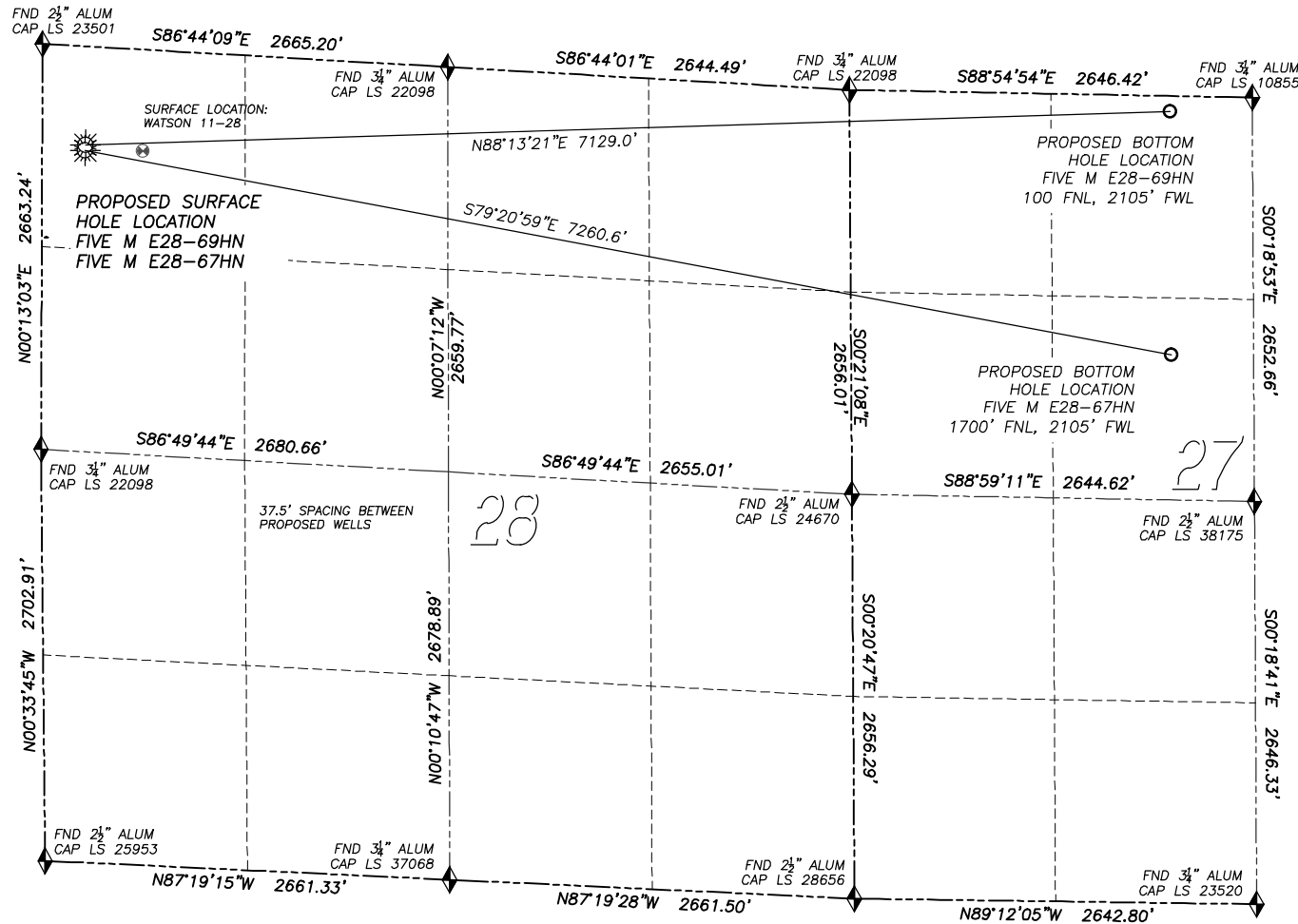
NOTICE: According to Colorado law you MUST commence any legal action based upon any defect in this W.L.C. within three years after you first discover such defect. In no event may any action based upon any such defect in this W.L.C. be commenced more than ten years from the date of the certification shown herein.

DALEY LAND SURVEYING, INC. PARKER, CO. 80134 303 953 9841

MULTI WELL PAD DIRECTIONAL LAYOUT

FIVE M E28-69HN & FIVE M E28-67HN

SECTION 28, TOWNSHIP 6 NORTH, RANGE 65 WEST OF THE 6TH PRINCIPAL MERIDIAN



NAD 83 LATITUDE AND LONGITUDE

FIVE M E28-69HN SURFACE HOLE:

LATITUDE: N40.46343°
 LONGITUDE: W104.67697°
 ELEVATION: 4712'
 FOOTAGE: 646' FNL, 284' FWL
 PDOP: 1.8
 QTR/QTR: NW4/NW4
 PROP LINE: 254'± WEST

BOTTOM HOLE:

LATITUDE: N40.46406°
 LONGITUDE: W104.65137°
 FOOTAGE: 100' FNL, 2105' FWL
 OF SECTION 27

FIVE M E28-67HN SURFACE HOLE:

LATITUDE: N40.46333°
 LONGITUDE: W104.67697°
 ELEVATION: 4712'
 FOOTAGE: 684' FNL, 284' FWL
 PDOP: 1.7
 QTR/QTR: NW4/NW4
 PROP LINE: 254'± WEST

BOTTOM HOLE:

LATITUDE: N40.45966°
 LONGITUDE: W104.65133°
 FOOTAGE: 1700' FNL, 2105' FWL
 OF SECTION 27

