

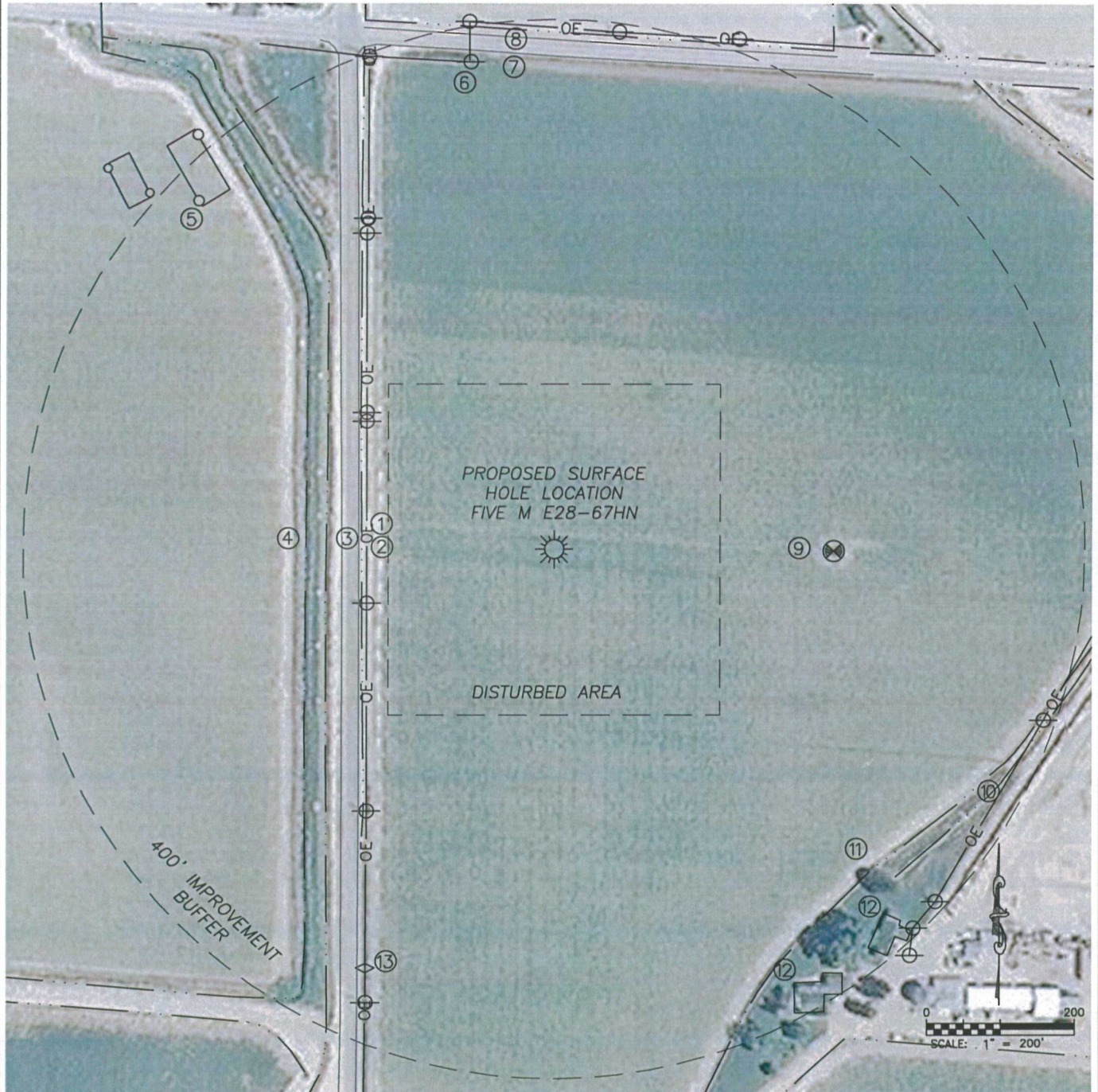
DALEY LAND SURVEYING, INC.

PARKER, CO. 80134

303 953 9841

LOCATION DRAWING FIVE M E28-67HN

SECTION 28, TOWNSHIP 6 NORTH, RANGE 65 WEST OF THE 6TH PRINCIPAL MERIDIAN



IMPROVEMENTS

1. O.H. UTILITY:	255'± W
2. IRRIG. DITCH:	262'± W
3. E EDGE WCR 41:	265'± W
4. IRRIG. DITCH:	309', 336'± W
5. PROD. FACILITY:	667'± NW
6. O.H. UTILITY:	672'± N
7. S EDGE WCR 66:	669'± N

8. IRRIG. DITCH:	701'± N
9. GAS WELL:	379'± E
10. O.H. UTILITY:	689'± SE
11. IRRIG. DITCH:	613', 643'± SE
12. BUILDING:	668', 674'± SE
13. GAS LINE MARKER:	624'± SW

DISTANCE TO NEAREST:

BUILDING:	668'± SE
PUBLIC ROAD:	265'± W
ABOVE GRND UTILITY:	255'± W
RAILROAD (ABANDONED):	1977'± S
PROP. LINE:	254'± W