



Bill Barrett Corp.

Garfield County, Colorado

MDP 23 Pad

Federal 21A-19-691

Wellbore #1

Plan: plan1 10jun10 rbw

Standard Planning Report

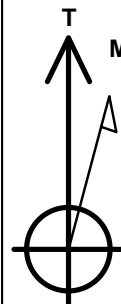
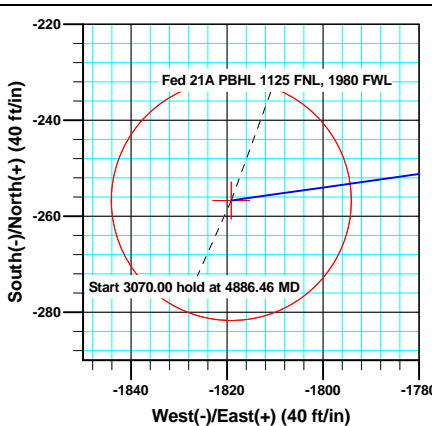
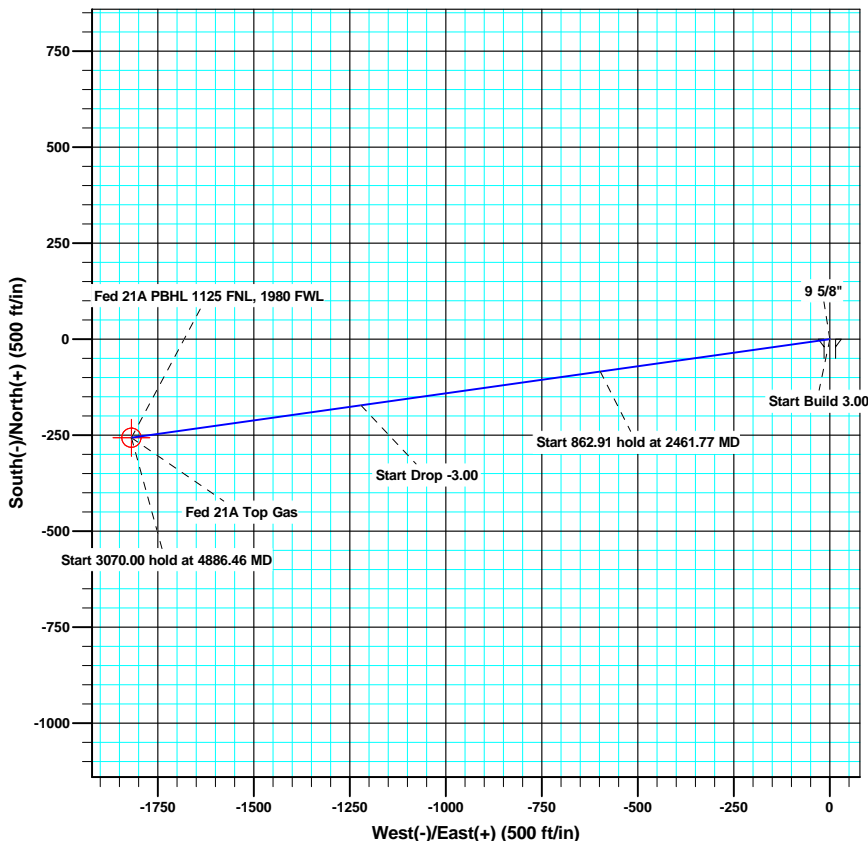
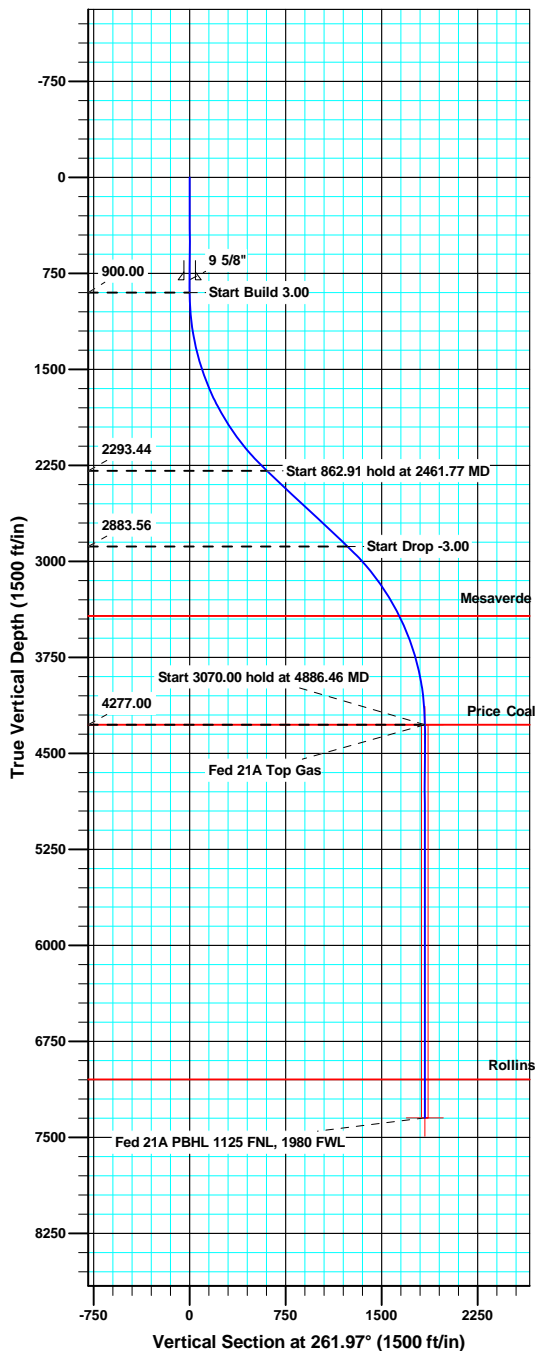
11 June, 2010



WELL DETAILS: Federal 21A-19-691

North American Datum 1983 US State Plane 1983 Colorado Central Zone
 +N/-S 0.00 +E/-W 0.00 Northing 1620282.13 Easting 2409656.60 Latitude 39.517786 Longitude -107.592762

Ground Level: 5904.00 MDP 23 Pad



Azimuths to True North
 Magnetic North: 10.28°

Magnetic Field
 Strength: 52446.5nT
 Dip Angle: 65.87°
 Date: 6/10/2010
 Model: IGRF200510

ANNOTATIONS

TVD	MD	Inc	Azi	+N/-S	+E/-W	VSec	Departure	Annotation
900.00	900.00	0.00	0.00	0.00	0.00	0.00	0.00	Start Build 3.00
2293.44	2461.77	46.85	261.97	-84.37	-597.84	603.76	603.76	Start 862.91 hold at 2461.77 MD
2883.56	3324.68	46.85	261.97	-172.34	-1221.25	1233.35	1233.35	Start Drop -3.00
4277.00	4886.46	0.00	0.00	-256.70	-1819.09	1837.11	1837.11	Start 3070.00 hold at 4886.46 MD
7347.00	7956.46	0.00	0.00	-256.70	-1819.09	1837.11	1837.11	TD at 7956.46



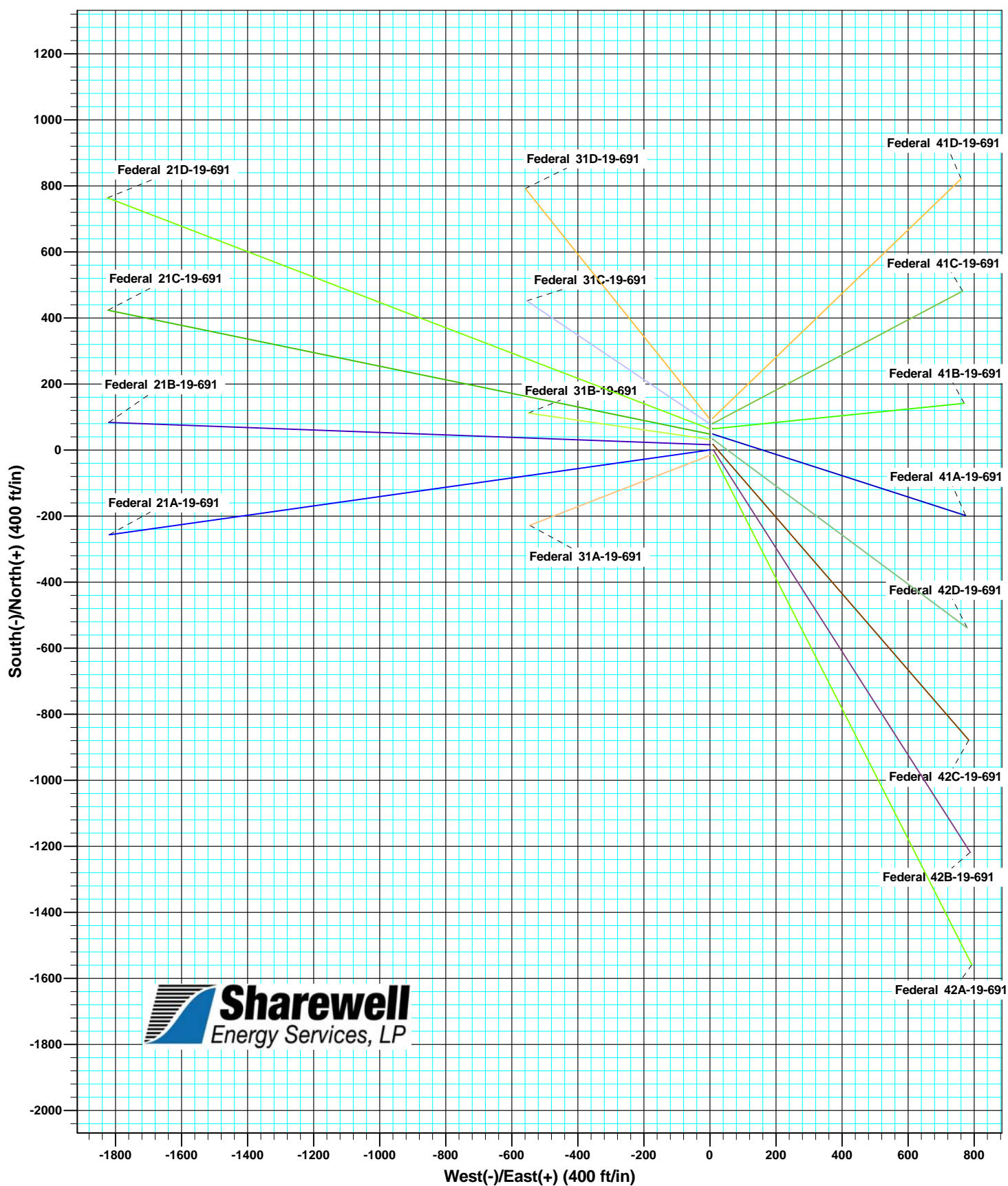


MDP 23 Pad

North American Datum 1983 US State Plane 1983 Colorado Central Zone

+N/-S	+E/-W	Northing	Easting	Latitude	Longitude
0.00	0.00	1620282.13	2409656.60	39.517786	-107.592762

Ground Level: 5904.00



Database:	SWFS01 Compass DB	Local Co-ordinate Reference:	Well Federal 21A-19-691
Company:	Bill Barrett Corp.	TVD Reference:	KB @ 5927.00ft
Project:	Garfield County, Colorado	MD Reference:	KB @ 5927.00ft
Site:	MDP 23 Pad	North Reference:	True
Well:	Federal 21A-19-691	Survey Calculation Method:	Minimum Curvature
Wellbore:	Wellbore #1		
Design:	plan1 10jun10 rbw		

Project	Garfield County, Colorado		
Map System:	US State Plane 1983	System Datum:	Mean Sea Level
Geo Datum:	North American Datum 1983		
Map Zone:	Colorado Central Zone		

Site		MDP 23 Pad				
Site Position:		Northing:	1,620,378.10 usft	Latitude:	39.518050	
From:	Lat/Long	Easting:	2,409,666.99 usft	Longitude:	-107.592733	
Position Uncertainty:		0.00 ft	Slot Radius:	1.10 ft	Grid Convergence:	-1.32 °

Well		Federal 21A-19-692				
Well Position	+N/-S	-96.18 ft	Northing:	1,620,282.13 usft	Latitude:	39.517786
	+E/-W	-8.18 ft	Easting:	2,409,656.60 usft	Longitude:	-107.592762
Position Uncertainty		0.00 ft	Wellhead Elevation:		Ground Level:	5,904.00 ft

Wellbore	Wellbore #1				
Magnetics	Model Name	Sample Date	Declination (°)	Dip Angle (°)	Field Strength (nT)
	IGRF200510	6/10/2010	10.28	65.87	52,447

Design	plan1 10jun10 rbw			
Audit Notes:				
Version:	Phase:	PROTOTYPE	Tie On Depth:	0.00
Vertical Section:	Depth From (TVD) (ft)	+N/-S (ft)	+E/-W (ft)	Direction (°)
	0.00	0.00	0.00	261.97

Plan Sections										
Measured Depth (ft)	Inclination (°)	Azimuth (°)	Vertical Depth (ft)	+N/-S (ft)	+E/-W (ft)	Dogleg Rate (°/100ft)	Build Rate (°/100ft)	Turn Rate (°/100ft)	TFO (°)	Target
0.00	0.00	0.00	0.00	0.00	0.00	0.00	0.00	0.00	0.00	
900.00	0.00	0.00	900.00	0.00	0.00	0.00	0.00	0.00	0.00	
2,461.77	46.85	261.97	2,293.44	-84.37	-597.84	3.00	3.00	0.00	261.97	
3,324.68	46.85	261.97	2,883.56	-172.34	-1,221.25	0.00	0.00	0.00	0.00	
4,886.46	0.00	0.00	4,277.00	-256.70	-1,819.09	3.00	-3.00	0.00	180.00	Fed 21A Top Gas
7,956.46	0.00	0.00	7,347.00	-256.70	-1,819.09	0.00	0.00	0.00	0.00	Fed 21A PBHL 1125 I



Database:	SWFS01 Compass DB	Local Co-ordinate Reference:	Well Federal 21A-19-691
Company:	Bill Barrett Corp.	TVD Reference:	KB @ 5927.00ft
Project:	Garfield County, Colorado	MD Reference:	KB @ 5927.00ft
Site:	MDP 23 Pad	North Reference:	True
Well:	Federal 21A-19-691	Survey Calculation Method:	Minimum Curvature
Wellbore:	Wellbore #1		
Design:	plan1 10jun10 rbw		

Planned Survey

Measured Depth (ft)	Inclination (°)	Azimuth (°)	Vertical Depth (ft)	+N/-S (ft)	+E/-W (ft)	Vertical Section (ft)	Dogleg Rate (°/100ft)	Build Rate (°/100ft)	Turn Rate (°/100ft)
900.00	0.00	0.00	900.00	0.00	0.00	0.00	0.00	0.00	0.00
Start Build 3.00									
1,000.00	3.00	261.97	999.95	-0.37	-2.59	2.62	3.00	3.00	0.00
1,100.00	6.00	261.97	1,099.63	-1.46	-10.36	10.46	3.00	3.00	0.00
1,200.00	9.00	261.97	1,198.77	-3.29	-23.28	23.51	3.00	3.00	0.00
1,300.00	12.00	261.97	1,297.08	-5.83	-41.33	41.74	3.00	3.00	0.00
1,400.00	15.00	261.97	1,394.31	-9.09	-64.44	65.08	3.00	3.00	0.00
1,500.00	18.00	261.97	1,490.18	-13.06	-92.56	93.48	3.00	3.00	0.00
1,600.00	21.00	261.97	1,584.43	-17.73	-125.61	126.85	3.00	3.00	0.00
1,700.00	24.00	261.97	1,676.81	-23.07	-163.50	165.12	3.00	3.00	0.00
1,800.00	27.00	261.97	1,767.06	-29.09	-206.12	208.16	3.00	3.00	0.00
1,900.00	30.00	261.97	1,854.93	-35.75	-253.36	255.87	3.00	3.00	0.00
2,000.00	33.00	261.97	1,940.18	-43.05	-305.09	308.12	3.00	3.00	0.00
2,100.00	36.00	261.97	2,022.59	-50.97	-361.17	364.75	3.00	3.00	0.00
2,200.00	39.00	261.97	2,101.91	-59.47	-421.44	425.62	3.00	3.00	0.00
2,300.00	42.00	261.97	2,177.95	-68.55	-485.74	490.56	3.00	3.00	0.00
2,400.00	45.00	261.97	2,250.47	-78.16	-553.90	559.38	3.00	3.00	0.00
2,461.77	46.85	261.97	2,293.44	-84.37	-597.84	603.76	3.00	3.00	0.00
Start 862.91 hold at 2461.77 MD									
2,500.00	46.85	261.97	2,319.58	-88.26	-625.46	631.65	0.00	0.00	0.00
2,600.00	46.85	261.97	2,387.97	-98.46	-697.70	704.61	0.00	0.00	0.00
2,700.00	46.85	261.97	2,456.36	-108.65	-769.95	777.58	0.00	0.00	0.00
2,800.00	46.85	261.97	2,524.74	-118.85	-842.19	850.54	0.00	0.00	0.00
2,900.00	46.85	261.97	2,593.13	-129.04	-914.44	923.50	0.00	0.00	0.00
3,000.00	46.85	261.97	2,661.52	-139.24	-986.68	996.46	0.00	0.00	0.00
3,100.00	46.85	261.97	2,729.90	-149.43	-1,058.92	1,069.42	0.00	0.00	0.00
3,200.00	46.85	261.97	2,798.29	-159.63	-1,131.17	1,142.38	0.00	0.00	0.00
3,300.00	46.85	261.97	2,866.68	-169.82	-1,203.41	1,215.34	0.00	0.00	0.00
3,324.68	46.85	261.97	2,883.56	-172.34	-1,221.25	1,233.35	0.00	0.00	0.00
Start Drop -3.00									
3,400.00	44.59	261.97	2,936.14	-179.87	-1,274.64	1,287.27	3.00	-3.00	0.00
3,500.00	41.59	261.97	3,009.15	-189.42	-1,342.28	1,355.58	3.00	-3.00	0.00
3,600.00	38.59	261.97	3,085.64	-198.42	-1,406.05	1,419.98	3.00	-3.00	0.00
3,700.00	35.59	261.97	3,165.40	-206.84	-1,465.76	1,480.28	3.00	-3.00	0.00
3,800.00	32.59	261.97	3,248.20	-214.68	-1,521.26	1,536.33	3.00	-3.00	0.00
3,900.00	29.59	261.97	3,333.82	-221.89	-1,572.39	1,587.97	3.00	-3.00	0.00
4,000.00	26.59	261.97	3,422.03	-228.47	-1,619.01	1,635.05	3.00	-3.00	0.00
4,005.55	26.43	261.97	3,427.00	-228.82	-1,621.47	1,637.53	3.00	-3.00	0.00
Mesaverde									
4,100.00	23.59	261.97	3,512.58	-234.40	-1,661.00	1,677.46	3.00	-3.00	0.00
4,200.00	20.59	261.97	3,605.23	-239.65	-1,698.24	1,715.07	3.00	-3.00	0.00
4,300.00	17.59	261.97	3,699.72	-244.22	-1,730.63	1,747.77	3.00	-3.00	0.00
4,400.00	14.59	261.97	3,795.79	-248.09	-1,758.07	1,775.49	3.00	-3.00	0.00
4,500.00	11.59	261.97	3,893.17	-251.26	-1,780.50	1,798.14	3.00	-3.00	0.00
4,600.00	8.59	261.97	3,991.62	-253.71	-1,797.86	1,815.67	3.00	-3.00	0.00
4,700.00	5.59	261.97	4,090.84	-255.43	-1,810.08	1,828.02	3.00	-3.00	0.00
4,800.00	2.59	261.97	4,190.57	-256.43	-1,817.15	1,835.15	3.00	-3.00	0.00
4,886.46	0.00	0.00	4,277.00	-256.70	-1,819.09	1,837.11	3.00	-3.00	0.00
Start 3070.00 hold at 4886.46 MD - Price Coal - Fed 21A Top Gas									
4,900.00	0.00	0.00	4,290.54	-256.70	-1,819.09	1,837.11	0.00	0.00	0.00
5,000.00	0.00	0.00	4,390.54	-256.70	-1,819.09	1,837.11	0.00	0.00	0.00
5,100.00	0.00	0.00	4,490.54	-256.70	-1,819.09	1,837.11	0.00	0.00	0.00
5,200.00	0.00	0.00	4,590.54	-256.70	-1,819.09	1,837.11	0.00	0.00	0.00



Database:	SWFS01 Compass DB	Local Co-ordinate Reference:	Well Federal 21A-19-691
Company:	Bill Barrett Corp.	TVD Reference:	KB @ 5927.00ft
Project:	Garfield County, Colorado	MD Reference:	KB @ 5927.00ft
Site:	MDP 23 Pad	North Reference:	True
Well:	Federal 21A-19-691	Survey Calculation Method:	Minimum Curvature
Wellbore:	Wellbore #1		
Design:	plan1 10jun10 rbw		

Planned Survey										
Measured Depth (ft)	Inclination (°)	Azimuth (°)	Vertical Depth (ft)	+N/-S (ft)	+E/-W (ft)	Vertical Section (ft)	Dogleg Rate (°/100ft)	Build Rate (°/100ft)	Turn Rate (°/100ft)	
5,300.00	0.00	0.00	4,690.54	-256.70	-1,819.09	1,837.11	0.00	0.00	0.00	
5,400.00	0.00	0.00	4,790.54	-256.70	-1,819.09	1,837.11	0.00	0.00	0.00	
5,500.00	0.00	0.00	4,890.54	-256.70	-1,819.09	1,837.11	0.00	0.00	0.00	
5,600.00	0.00	0.00	4,990.54	-256.70	-1,819.09	1,837.11	0.00	0.00	0.00	
5,700.00	0.00	0.00	5,090.54	-256.70	-1,819.09	1,837.11	0.00	0.00	0.00	
5,800.00	0.00	0.00	5,190.54	-256.70	-1,819.09	1,837.11	0.00	0.00	0.00	
5,900.00	0.00	0.00	5,290.54	-256.70	-1,819.09	1,837.11	0.00	0.00	0.00	
6,000.00	0.00	0.00	5,390.54	-256.70	-1,819.09	1,837.11	0.00	0.00	0.00	
6,100.00	0.00	0.00	5,490.54	-256.70	-1,819.09	1,837.11	0.00	0.00	0.00	
6,200.00	0.00	0.00	5,590.54	-256.70	-1,819.09	1,837.11	0.00	0.00	0.00	
6,300.00	0.00	0.00	5,690.54	-256.70	-1,819.09	1,837.11	0.00	0.00	0.00	
6,400.00	0.00	0.00	5,790.54	-256.70	-1,819.09	1,837.11	0.00	0.00	0.00	
6,500.00	0.00	0.00	5,890.54	-256.70	-1,819.09	1,837.11	0.00	0.00	0.00	
6,600.00	0.00	0.00	5,990.54	-256.70	-1,819.09	1,837.11	0.00	0.00	0.00	
6,700.00	0.00	0.00	6,090.54	-256.70	-1,819.09	1,837.11	0.00	0.00	0.00	
6,800.00	0.00	0.00	6,190.54	-256.70	-1,819.09	1,837.11	0.00	0.00	0.00	
6,900.00	0.00	0.00	6,290.54	-256.70	-1,819.09	1,837.11	0.00	0.00	0.00	
7,000.00	0.00	0.00	6,390.54	-256.70	-1,819.09	1,837.11	0.00	0.00	0.00	
7,100.00	0.00	0.00	6,490.54	-256.70	-1,819.09	1,837.11	0.00	0.00	0.00	
7,200.00	0.00	0.00	6,590.54	-256.70	-1,819.09	1,837.11	0.00	0.00	0.00	
7,300.00	0.00	0.00	6,690.54	-256.70	-1,819.09	1,837.11	0.00	0.00	0.00	
7,400.00	0.00	0.00	6,790.54	-256.70	-1,819.09	1,837.11	0.00	0.00	0.00	
7,500.00	0.00	0.00	6,890.54	-256.70	-1,819.09	1,837.11	0.00	0.00	0.00	
7,600.00	0.00	0.00	6,990.54	-256.70	-1,819.09	1,837.11	0.00	0.00	0.00	
7,656.46	0.00	0.00	7,047.00	-256.70	-1,819.09	1,837.11	0.00	0.00	0.00	
Rollins										
7,700.00	0.00	0.00	7,090.54	-256.70	-1,819.09	1,837.11	0.00	0.00	0.00	
7,800.00	0.00	0.00	7,190.54	-256.70	-1,819.09	1,837.11	0.00	0.00	0.00	
7,900.00	0.00	0.00	7,290.54	-256.70	-1,819.09	1,837.11	0.00	0.00	0.00	
7,956.46	0.00	0.00	7,347.00	-256.70	-1,819.09	1,837.11	0.00	0.00	0.00	
TD at 7956.46 - Fed 21A PBHL 1125 FNL, 1980 FWL										

Design Targets									
Target Name	Dip Angle (°)	Dip Dir. (°)	TVD (ft)	+N/-S (ft)	+E/-W (ft)	Northing (usft)	Easting (usft)	Latitude	Longitude
- hit/miss target									
- Shape									
Fed 21A Top Gas	0.00	0.00	4,277.00	-256.70	-1,819.09	1,620,067.39	2,407,832.08	39.517081	-107.599210
- plan hits target center									
- Circle (radius 25.00)									
Fed 21A PBHL 1125 FN	0.00	0.00	7,347.00	-256.70	-1,819.09	1,620,067.39	2,407,832.08	39.517081	-107.599210
- plan hits target center									
- Point									

Casing Points					
Measured Depth (ft)	Vertical Depth (ft)	Name	Casing Diameter (ft)	Hole Diameter (ft)	
800.00	800.00	9 5/8"	0.80	1.02	

Database:	SWFS01 Compass DB	Local Co-ordinate Reference:	Well Federal 21A-19-691
Company:	Bill Barrett Corp.	TVD Reference:	KB @ 5927.00ft
Project:	Garfield County, Colorado	MD Reference:	KB @ 5927.00ft
Site:	MDP 23 Pad	North Reference:	True
Well:	Federal 21A-19-691	Survey Calculation Method:	Minimum Curvature
Wellbore:	Wellbore #1		
Design:	plan1 10jun10 rbw		

Formations					
Measured Depth (ft)	Vertical Depth (ft)	Name	Lithology	Dip (°)	Dip Direction (°)
4,005.55	3,427.00	Mesaverde		0.00	
4,886.46	4,277.00	Price Coal		0.00	
7,656.46	7,047.00	Rollins		0.00	

Plan Annotations				
Measured Depth (ft)	Vertical Depth (ft)	Local Coordinates		Comment
		+N/-S (ft)	+E/-W (ft)	
900.00	900.00	0.00	0.00	Start Build 3.00
2,461.77	2,293.44	-84.37	-597.84	Start 862.91 hold at 2461.77 MD
3,324.68	2,883.56	-172.34	-1,221.25	Start Drop -3.00
4,886.46	4,277.00	-256.70	-1,819.09	Start 3070.00 hold at 4886.46 MD
7,956.46	7,347.00	-256.70	-1,819.09	TD at 7956.46