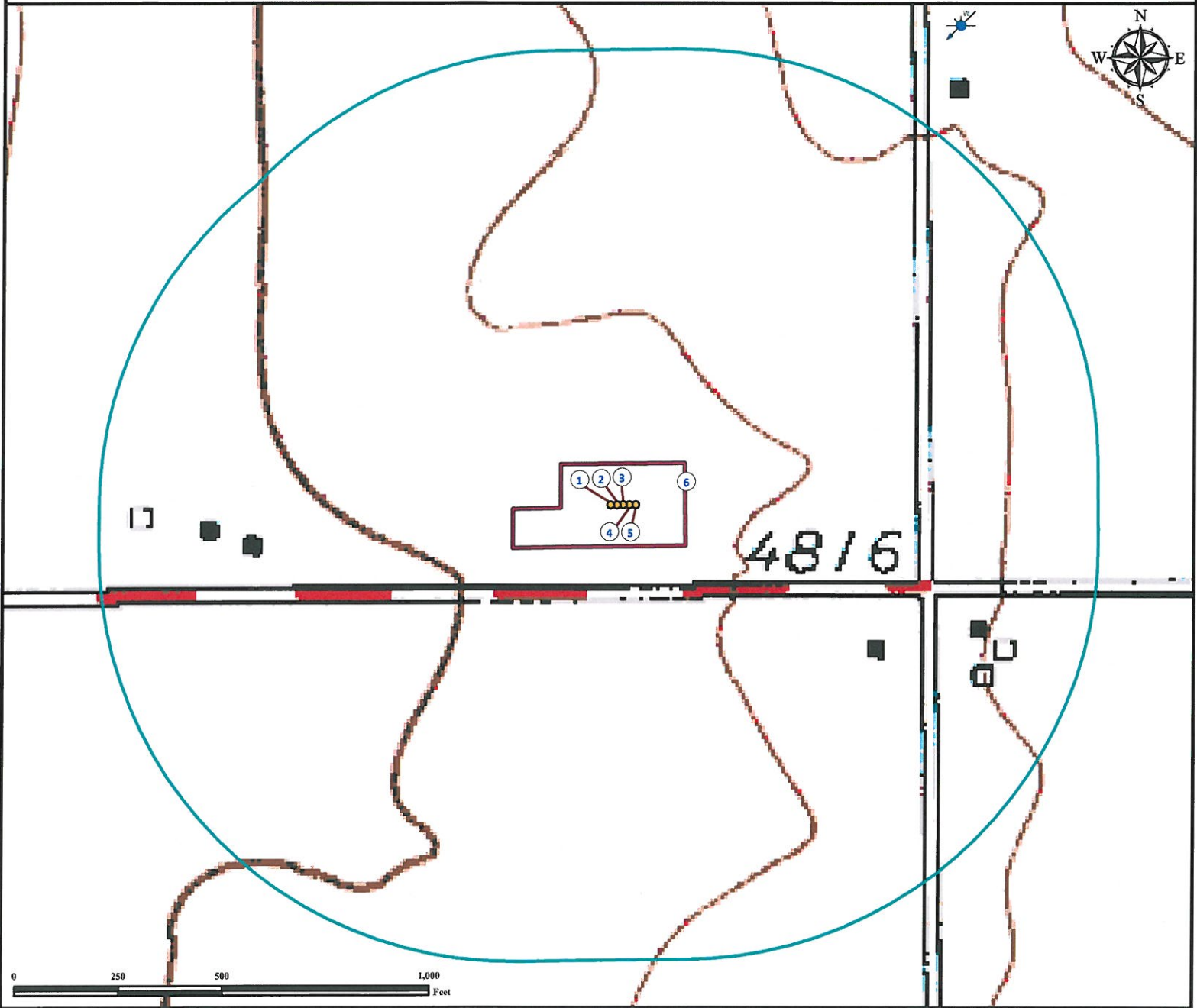


# Hydrology Map

## NC FARMS 20-32

SE¼ SE¼ SECTION 32, TOWNSHIP 7 NORTH, RANGE 64 WEST OF THE 6TH PRINCIPAL MERIDIAN



- 1. Proposed Well NC FARMS 15-32.
- 2. Proposed Well NC FARMS 10-32.
- 3. Proposed Well NC FARMS 20-32.
- 4. Proposed Well NC FARMS 9-32.
- 5. Proposed Well NC FARMS 16-32.
- 6. Operational Disturbance Area.

<p><b>Legend</b></p> <ul style="list-style-type: none"> <li> Proposed Well</li> <li> Water Well</li> </ul>	<ul style="list-style-type: none"> <li> Disturbance Area</li> <li> 1000' Radius</li> </ul>
--	--

**Reference Location**

\*\* All Measurements are Made from Reference Well NC FARMS 20-32 \*\*

Lat: 40.522872° Long: -104.567402° (NAD83)  
Elevation: 4804 Feet

**PFS** Petroleum Field Services, LLC  
*Use our resources to find yours!*  
[www.petro-fs.com](http://www.petro-fs.com)  
 (303) 928-7128

Field Date: 09/27/2011  
 Drafting Date: 10/20/2011  
 Drafter: HMB  
 Checked By: BHF

Data Sources:  
 TOPO courtesy USGS  
 Water wells courtesy CDOWR  
 Water Lines courtesy National Hydrology Database (NHD)

Prepared for:  
**BAYSWATER**  
 EXPLORATION AND PRODUCTION, LLC