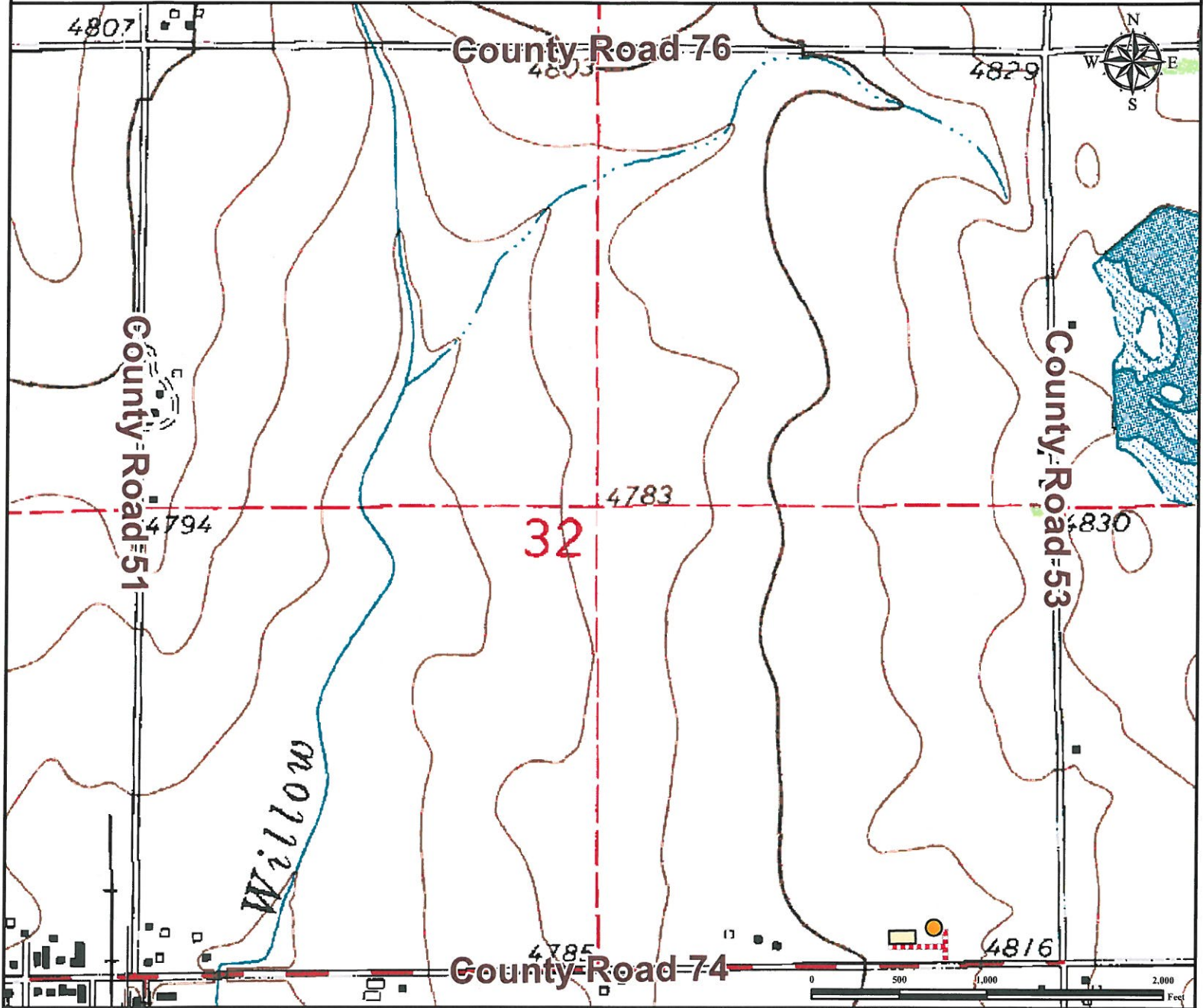


Access Road Map

NC FARMS 20-32

SE¼ SE¼ SECTION 32, TOWNSHIP 7 NORTH, RANGE 64 WEST OF THE 6TH PRINCIPAL MERIDIAN



From Eaton, CO: From the intersection of US Highway 85 and County Road 74, drive East on County Road 74 for ±7.65 miles to proposed access road. Turn Left onto proposed access road and drive North for ±0.03 miles, turn with road and drive ±0.02 miles to proposed well pad.

Total distance from Eaton, CO to proposed well location is ±7.70 miles to proposed well pad.

Legend

- Proposed Well Pad
- Proposed Facility
- Proposed Access Road

Reference Location

** All Measurements are Made from Reference Well NC FARMS 20-32 **
 Lat: 40.522872° Long:-104.567402° (NAD83)
 Elevation: 4804 Feet

PFS Petroleum Field Services

Use our resources to find yours!
www.petro-fs.com
 (303) 928-7128

Field Date: 09/27/2011
 Drafting Date: 10/31/2011
 Drafter: KLM
 Checked By: BHF

Data Sources:
 - TOPO courtesy of USGS

Prepared for:

BAYSWATER
 EXPLORATION AND PRODUCTION, LLC