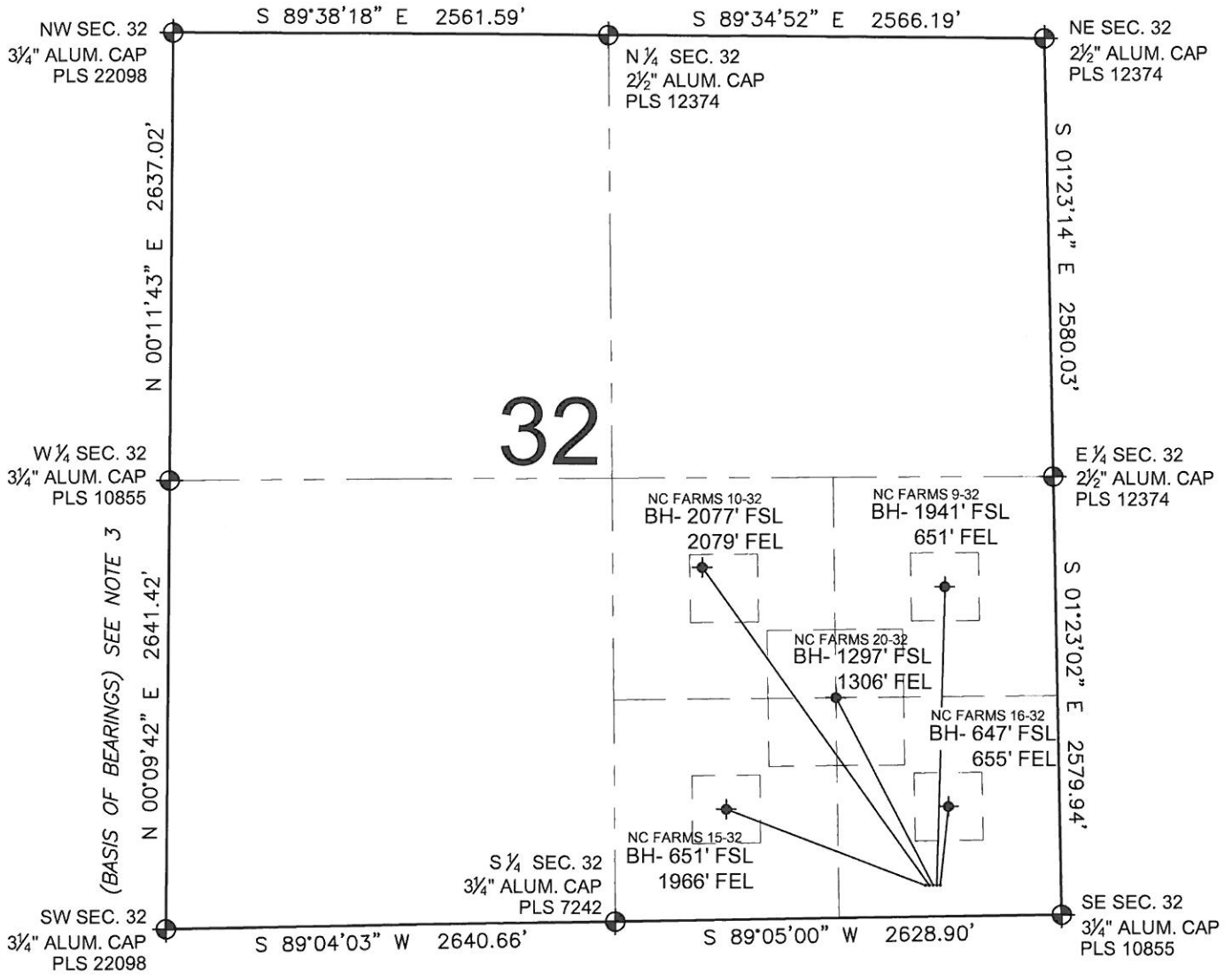


PAD DRAWING: NC FARMS 5 PAD

SECTION 32, TOWNSHIP 7 NORTH, RANGE 64 WEST, 6TH P.M.



NOTES:

1. THIS FIELD SURVEY CONFORMS TO THE MINIMUM STANDARDS SET BY THE C.O.G.C.C., RULE NO. 215
2. HORIZONTAL POSITIONS AND ORTHOMETRIC ELEVATIONS SHOWN AT THE WELL HEAD, ARE BASED ON GPS-RTK POSITIONS DERIVED FROM MINIMUM 2-HOUR STATIC OBSERVATIONS CORRECTED BY THE NATIONAL GEODETIC SURVEY ONLINE POSITIONING USER SERVICE, O.P.U.S. DATUM: HORIZONTAL = NAD83/2007, VERTICAL = NAVD88
3. THE BASIS OF BEARINGS ARE STATE PLANE COORDINATE SYSTEM GRID BEARINGS SHOWN HEREON BETWEEN THE DESCRIBED THE MONUMENTS SHOWN HEREON.
4. GRID DISTANCES ARE SHOWN, AS MEASURED IN THE FIELD, WITH TIES TO WELLS MEASURED PERPENDICULAR TO SECTION LINES.

LEGEND

- ⊕ = EXISTING MONUMENT
- = PROPOSED WELL
- ◆ = BOTTOM HOLE
- ⬠ = EXISTING WELL
- BH= BOTTOM HOLE

NOTES:

- NC FARMS 15-32 TO BE AT 185' FSL, 785' FEL. BOTTOM HOLE AT 651' FSL & 1966' FEL.
- NC FARMS 10-32 TO BE AT 185' FSL, 770' FEL. BOTTOM HOLE AT 2077' FSL & 2079' FEL.
- NC FARMS 20-32 TO BE AT 185' FSL, 755' FEL. BOTTOM HOLE AT 1297' FSL & 1306' FEL.
- NC FARMS 9-32 TO BE AT 185' FSL, 740' FEL. BOTTOM HOLE AT 1941' FSL & 651' FEL.
- NC FARMS 16-32 TO BE AT 185' FSL, 725' FEL. BOTTOM HOLE AT 647' FSL & 655' FEL.

PREPARED BY:



BAYSWATER EXPLORATION & PRODUCTION, LLC

FIELD DATE: 09-27-11	PAD NAME: NC FARMS 5 PAD
DRAWING DATE: 11-07-11	SURFACE LOCATION: WELD COUNTY, COLORADO SE 1/4 SE 1/4, SEC. 32, T7N, R64W, 6TH P.M.
BY: SMF	

