

US ROCKIES REGION PLANNING

COLORADO NORTHERN CWP - 83

Phase 1 Pad 2

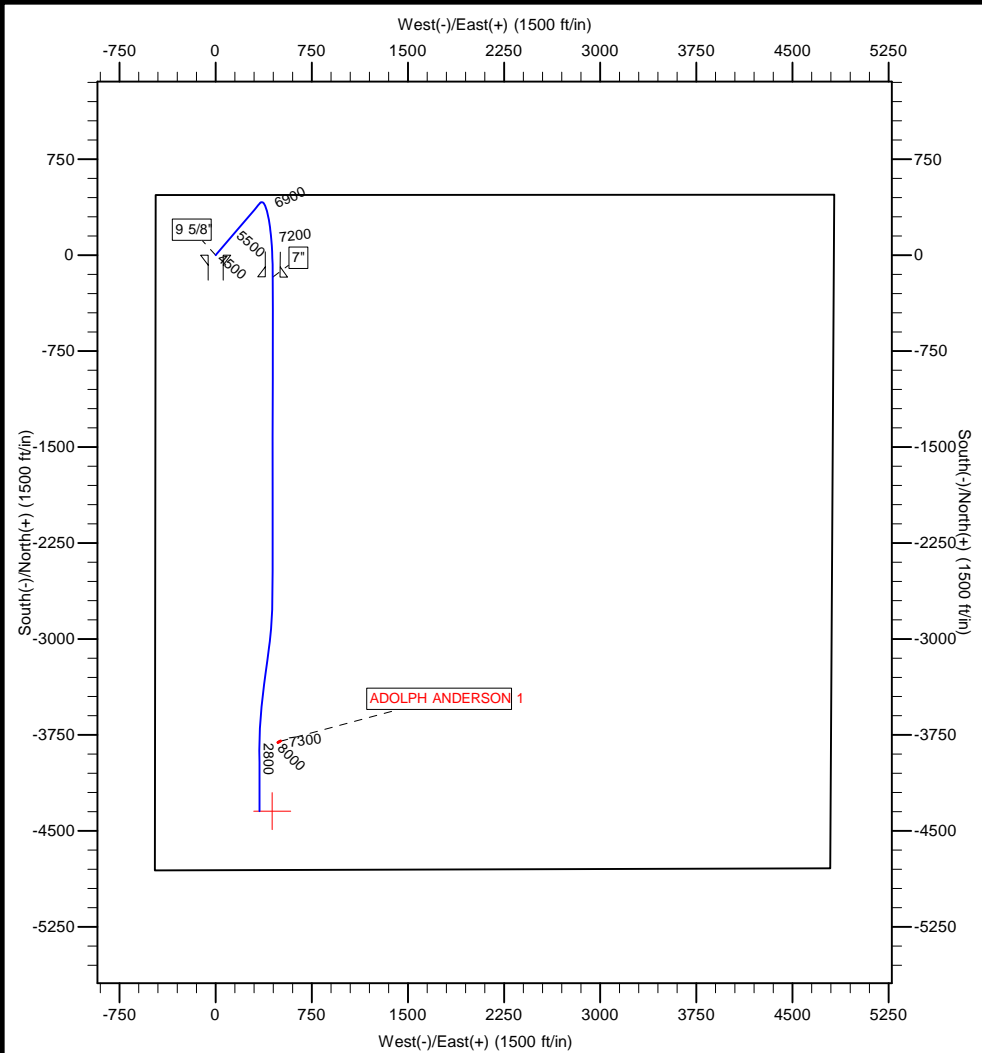
SCHOMBER 13N-22HZ

SCHOMBER 13N-22HZ

Plan: SCHOMBER 13N-22HZ (wp02)

Standard Planning Report

11 October, 2011



Azimuths to True North
 Magnetic North: 8.77°
 Magnetic Field
 Strength: 52983.3snT
 Dip Angle: 66.83°
 Date: 9/16/2011
 Model: IGRF200510



Project: COLORADO NORTHERN CWP - 83
Site: Phase 1 Pad 2
Well: SCHOMBER 13N-22HZ
Wellbore: SCHOMBER 13N-22HZ
Section:
SHL:
Design: SCHOMBER 13N-22HZ (wp02)
Latitude: 40.129611
Longitude: -104.771145
GL: 5007.00
KB: 17' RKB + 5007' GL @ 5024.01ft

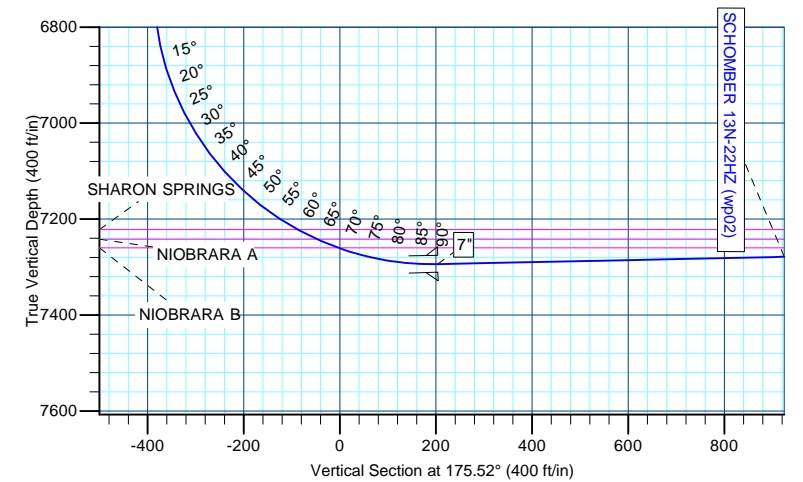
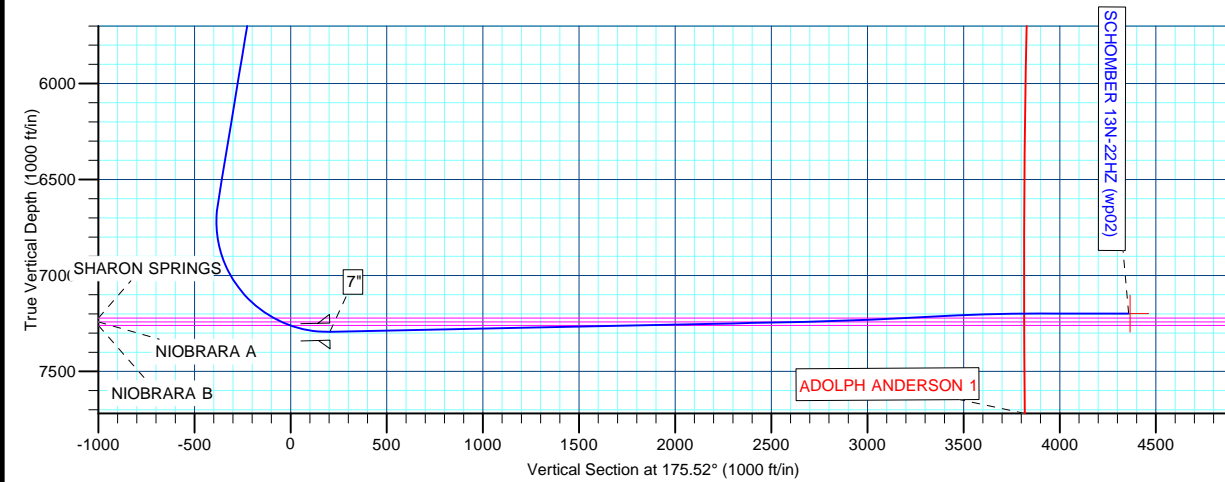
WELL DETAILS: SCHOMBER 13N-22HZ						
+N/-S	+E/-W	Northing	Ground Level: Easting	5007.00 Latitude	Longitude	Slot
0.00	0.00	1290898.62	3203800.98	40.129611	-104.771145	

SECTION DETAILS								
MD	Inc	Azi	TVD	+N/-S	+E/-W	Dleg	TFace	VSect
0.00	0.00	0.00	0.00	0.00	0.00	0.00	0.00	0.00
4000.00	0.00	0.00	4000.00	0.00	0.00	0.00	0.00	0.00
4651.00	13.02	40.27	4645.41	56.19	47.61	2.00	40.27	-52.30
6688.24	13.02	40.27	6630.27	406.38	344.29	0.00	0.00	-378.21
7699.17	91.20	180.06	7294.00	-170.00	445.00	10.00	138.87	204.28
10199.17	91.20	180.06	7241.64	-2669.46	442.56	0.00	0.00	2695.89
10567.95	92.76	187.27	7228.87	-3037.00	419.04	2.00	77.65	3060.47
10992.47	92.76	187.27	7208.40	-3457.63	365.40	0.00	0.00	3475.61
11381.14	90.00	180.00	7199.01	-3845.11	340.80	2.00	-110.71	3859.98
11881.15	90.00	180.00	7199.01	-4345.11	340.80	0.00	0.00	4358.45

WELLBORE TARGET DETAILS (MAP CO-ORDINATES AND LAT/LONG)						
Name	TVD	+N/-S	+E/-W	Latitude	Longitude	Shape
SCHOMBER 13N-22HZ BHL	7199.01	-4345.11	440.76	40.117683	-104.769569	Point

FORMATION TOP DETAILS		
TVDPath	MDPath	Formation
4157.00	4157.08	PARKMAN
4582.00	4586.08	SUSSEX
7222.00	7394.78	SHARON SPRINGS
7242.00	7439.34	NIOBRARA A
7260.00	7487.17	NIOBRARA B

CASING DETAILS			
TVD	MD	Name	Size
900.00	900.00	9 5/8"	9-5/8
7294.00	7699.17	7"	7



Anadarko Petroleum Corp

Planning Report

Database:	edmp	Local Co-ordinate Reference:	Well SCHOMBER 13N-22HZ
Company:	US ROCKIES REGION PLANNING	TVD Reference:	17' RKB + 5007' GL @ 5024.01ft
Project:	COLORADO NORTHERN CWP - 83	MD Reference:	17' RKB + 5007' GL @ 5024.01ft
Site:	Phase 1 Pad 2	North Reference:	True
Well:	SCHOMBER 13N-22HZ	Survey Calculation Method:	Minimum Curvature
Wellbore:	SCHOMBER 13N-22HZ		
Design:	SCHOMBER 13N-22HZ (wp02)		

Project	COLORADO NORTHERN CWP - 83		
Map System:	US State Plane 1983	System Datum:	Mean Sea Level
Geo Datum:	North American Datum 1983		
Map Zone:	Colorado Northern Zone		

Site	Phase 1 Pad 2				
Site Position:		Northing:	1,290,861.02 usft	Latitude:	40.129506
From:	Lat/Long	Easting:	3,203,868.87 usft	Longitude:	-104.770904
Position Uncertainty:	0.00 ft	Slot Radius:	0 "	Grid Convergence:	0.47 °

Well	SCHOMBER 13N-22HZ, Phase 1 Pad 2					
Well Position	+N/-S	38.15 ft	Northing:	1,290,898.62 usft	Latitude:	40.129611
	+E/-W	-67.58 ft	Easting:	3,203,800.98 usft	Longitude:	-104.771145
Position Uncertainty		0.00 ft	Wellhead Elevation:		Ground Level:	5,007.00 ft

Wellbore	SCHOMBER 13N-22HZ				
Magnetics	Model Name	Sample Date	Declination (°)	Dip Angle (°)	Field Strength (nT)
	IGRF200510	9/16/2011	8.77	66.83	52,983

Design	SCHOMBER 13N-22HZ (wp02)			
Audit Notes:				
Version:	Phase:	PLAN	Tie On Depth:	0.00
Vertical Section:	Depth From (TVD) (ft)	+N/-S (ft)	+E/-W (ft)	Direction (°)
	0.00	0.00	0.00	175.52

Plan Sections										
Measured Depth (ft)	Inclination (°)	Azimuth (°)	Vertical Depth (ft)	+N/-S (ft)	+E/-W (ft)	Dogleg Rate (°/100usft)	Build Rate (°/100usft)	Turn Rate (°/100usft)	TFO (°)	Target
0.00	0.00	0.00	0.00	0.00	0.00	0.00	0.00	0.00	0.00	
4,000.00	0.00	0.00	4,000.00	0.00	0.00	0.00	0.00	0.00	0.00	
4,651.00	13.02	40.27	4,645.41	56.19	47.61	2.00	2.00	0.00	40.27	
6,688.24	13.02	40.27	6,630.27	406.38	344.29	0.00	0.00	0.00	0.00	
7,699.17	91.20	180.06	7,294.00	-170.00	445.00	10.00	7.73	13.83	138.87	
10,199.17	91.20	180.06	7,241.64	-2,669.46	442.56	0.00	0.00	0.00	0.00	
10,567.95	92.76	187.27	7,228.87	-3,037.00	419.04	2.00	0.42	1.96	77.65	
10,992.47	92.76	187.27	7,208.40	-3,457.63	365.40	0.00	0.00	0.00	0.00	
11,381.14	90.00	180.00	7,199.01	-3,845.11	340.80	2.00	-0.71	-1.87	-110.71	
11,881.15	90.00	180.00	7,199.01	-4,345.11	340.80	0.00	0.00	0.00	0.00	

Anadarko Petroleum Corp

Planning Report

Database:	edmp	Local Co-ordinate Reference:	Well SCHOMBER 13N-22HZ
Company:	US ROCKIES REGION PLANNING	TVD Reference:	17' RKB + 5007' GL @ 5024.01ft
Project:	COLORADO NORTHERN CWP - 83	MD Reference:	17' RKB + 5007' GL @ 5024.01ft
Site:	Phase 1 Pad 2	North Reference:	True
Well:	SCHOMBER 13N-22HZ	Survey Calculation Method:	Minimum Curvature
Wellbore:	SCHOMBER 13N-22HZ		
Design:	SCHOMBER 13N-22HZ (wp02)		

Planned Survey										
Measured Depth (ft)	Inclination (°)	Azimuth (°)	Vertical Depth (ft)	+N/-S (ft)	+E/-W (ft)	Vertical Section (ft)	Dogleg Rate (°/100usft)	Build Rate (°/100usft)	Turn Rate (°/100usft)	
0.00	0.00	0.00	0.00	0.00	0.00	0.00	0.00	0.00	0.00	
100.00	0.00	0.00	100.00	0.00	0.00	0.00	0.00	0.00	0.00	
200.00	0.00	0.00	200.00	0.00	0.00	0.00	0.00	0.00	0.00	
300.00	0.00	0.00	300.00	0.00	0.00	0.00	0.00	0.00	0.00	
400.00	0.00	0.00	400.00	0.00	0.00	0.00	0.00	0.00	0.00	
500.00	0.00	0.00	500.00	0.00	0.00	0.00	0.00	0.00	0.00	
600.00	0.00	0.00	600.00	0.00	0.00	0.00	0.00	0.00	0.00	
700.00	0.00	0.00	700.00	0.00	0.00	0.00	0.00	0.00	0.00	
800.00	0.00	0.00	800.00	0.00	0.00	0.00	0.00	0.00	0.00	
900.00	0.00	0.00	900.00	0.00	0.00	0.00	0.00	0.00	0.00	
1,000.00	0.00	0.00	1,000.00	0.00	0.00	0.00	0.00	0.00	0.00	
1,100.00	0.00	0.00	1,100.00	0.00	0.00	0.00	0.00	0.00	0.00	
1,200.00	0.00	0.00	1,200.00	0.00	0.00	0.00	0.00	0.00	0.00	
1,300.00	0.00	0.00	1,300.00	0.00	0.00	0.00	0.00	0.00	0.00	
1,400.00	0.00	0.00	1,400.00	0.00	0.00	0.00	0.00	0.00	0.00	
1,500.00	0.00	0.00	1,500.00	0.00	0.00	0.00	0.00	0.00	0.00	
1,600.00	0.00	0.00	1,600.00	0.00	0.00	0.00	0.00	0.00	0.00	
1,700.00	0.00	0.00	1,700.00	0.00	0.00	0.00	0.00	0.00	0.00	
1,800.00	0.00	0.00	1,800.00	0.00	0.00	0.00	0.00	0.00	0.00	
1,900.00	0.00	0.00	1,900.00	0.00	0.00	0.00	0.00	0.00	0.00	
2,000.00	0.00	0.00	2,000.00	0.00	0.00	0.00	0.00	0.00	0.00	
2,100.00	0.00	0.00	2,100.00	0.00	0.00	0.00	0.00	0.00	0.00	
2,200.00	0.00	0.00	2,200.00	0.00	0.00	0.00	0.00	0.00	0.00	
2,300.00	0.00	0.00	2,300.00	0.00	0.00	0.00	0.00	0.00	0.00	
2,400.00	0.00	0.00	2,400.00	0.00	0.00	0.00	0.00	0.00	0.00	
2,500.01	0.00	0.00	2,500.01	0.00	0.00	0.00	0.00	0.00	0.00	
2,600.01	0.00	0.00	2,600.01	0.00	0.00	0.00	0.00	0.00	0.00	
2,700.01	0.00	0.00	2,700.01	0.00	0.00	0.00	0.00	0.00	0.00	
2,800.01	0.00	0.00	2,800.01	0.00	0.00	0.00	0.00	0.00	0.00	
2,900.01	0.00	0.00	2,900.01	0.00	0.00	0.00	0.00	0.00	0.00	
3,000.01	0.00	0.00	3,000.01	0.00	0.00	0.00	0.00	0.00	0.00	
3,100.01	0.00	0.00	3,100.01	0.00	0.00	0.00	0.00	0.00	0.00	
3,200.01	0.00	0.00	3,200.01	0.00	0.00	0.00	0.00	0.00	0.00	
3,300.01	0.00	0.00	3,300.01	0.00	0.00	0.00	0.00	0.00	0.00	
3,400.01	0.00	0.00	3,400.01	0.00	0.00	0.00	0.00	0.00	0.00	
3,500.01	0.00	0.00	3,500.01	0.00	0.00	0.00	0.00	0.00	0.00	
3,600.01	0.00	0.00	3,600.01	0.00	0.00	0.00	0.00	0.00	0.00	
3,700.01	0.00	0.00	3,700.01	0.00	0.00	0.00	0.00	0.00	0.00	
3,800.01	0.00	0.00	3,800.01	0.00	0.00	0.00	0.00	0.00	0.00	
3,900.01	0.00	0.00	3,900.01	0.00	0.00	0.00	0.00	0.00	0.00	
4,000.00	0.00	0.00	4,000.00	0.00	0.00	0.00	0.00	0.00	0.00	
4,000.01	0.00	40.27	4,000.01	0.00	0.00	0.00	0.00	0.00	0.00	
4,100.01	2.00	40.27	4,099.99	1.33	1.13	-1.24	2.00	2.00	0.00	
4,200.01	4.00	40.27	4,199.85	5.32	4.51	-4.96	2.00	2.00	0.00	
4,300.01	6.00	40.27	4,299.46	11.97	10.15	-11.14	2.00	2.00	0.00	
4,400.01	8.00	40.27	4,398.71	21.27	18.02	-19.80	2.00	2.00	0.00	
4,500.01	10.00	40.27	4,497.47	33.21	28.13	-30.91	2.00	2.00	0.00	
4,600.01	12.00	40.27	4,595.63	47.77	40.47	-44.46	2.00	2.00	0.00	
4,651.00	13.02	40.27	4,645.41	56.19	47.61	-52.30	2.00	2.00	0.00	
4,700.01	13.02	40.27	4,693.16	64.62	54.75	-60.14	0.00	0.00	0.00	
4,800.01	13.02	40.27	4,790.59	81.81	69.31	-76.14	0.00	0.00	0.00	
4,900.01	13.02	40.27	4,888.02	99.00	83.87	-92.14	0.00	0.00	0.00	
5,000.01	13.02	40.27	4,985.45	116.19	98.43	-108.13	0.00	0.00	0.00	
5,100.01	13.02	40.27	5,082.88	133.37	113.00	-124.13	0.00	0.00	0.00	

Anadarko Petroleum Corp

Planning Report

Database:	edmp	Local Co-ordinate Reference:	Well SCHOMBER 13N-22HZ
Company:	US ROCKIES REGION PLANNING	TVD Reference:	17' RKB + 5007' GL @ 5024.01ft
Project:	COLORADO NORTHERN CWP - 83	MD Reference:	17' RKB + 5007' GL @ 5024.01ft
Site:	Phase 1 Pad 2	North Reference:	True
Well:	SCHOMBER 13N-22HZ	Survey Calculation Method:	Minimum Curvature
Wellbore:	SCHOMBER 13N-22HZ		
Design:	SCHOMBER 13N-22HZ (wp02)		

Planned Survey									
Measured Depth (ft)	Inclination (°)	Azimuth (°)	Vertical Depth (ft)	+N/-S (ft)	+E/-W (ft)	Vertical Section (ft)	Dogleg Rate (°/100usft)	Build Rate (°/100usft)	Turn Rate (°/100usft)
5,200.01	13.02	40.27	5,180.31	150.56	127.56	-140.13	0.00	0.00	0.00
5,300.01	13.02	40.27	5,277.74	167.75	142.12	-156.13	0.00	0.00	0.00
5,400.01	13.02	40.27	5,375.17	184.94	156.69	-172.12	0.00	0.00	0.00
5,500.01	13.02	40.27	5,472.60	202.13	171.25	-188.12	0.00	0.00	0.00
5,600.01	13.02	40.27	5,570.03	219.32	185.81	-204.12	0.00	0.00	0.00
5,700.01	13.02	40.27	5,667.46	236.51	200.38	-220.12	0.00	0.00	0.00
5,800.01	13.02	40.27	5,764.88	253.70	214.94	-236.12	0.00	0.00	0.00
5,900.01	13.02	40.27	5,862.31	270.89	229.50	-252.11	0.00	0.00	0.00
6,000.01	13.02	40.27	5,959.74	288.08	244.07	-268.11	0.00	0.00	0.00
6,100.01	13.02	40.27	6,057.17	305.27	258.63	-284.11	0.00	0.00	0.00
6,200.01	13.02	40.27	6,154.60	322.46	273.19	-300.11	0.00	0.00	0.00
6,300.01	13.02	40.27	6,252.03	339.65	287.75	-316.11	0.00	0.00	0.00
6,400.01	13.02	40.27	6,349.46	356.84	302.32	-332.10	0.00	0.00	0.00
6,500.01	13.02	40.27	6,446.89	374.03	316.88	-348.10	0.00	0.00	0.00
6,600.01	13.02	40.27	6,544.32	391.21	331.44	-364.10	0.00	0.00	0.00
6,688.24	13.02	40.27	6,630.27	406.38	344.29	-378.21	0.00	0.00	0.00
6,700.01	12.16	43.95	6,641.77	408.28	346.01	-379.98	9.99	-7.32	31.22
6,800.01	8.62	98.56	6,740.33	414.76	360.77	-385.28	10.00	-3.54	54.61
6,900.01	14.12	143.31	6,838.51	403.84	375.50	-373.24	10.00	5.50	44.74
7,000.01	22.86	159.06	6,933.31	375.84	389.77	-344.21	10.00	8.75	15.76
7,100.01	32.32	166.18	7,021.86	331.62	403.13	-299.09	10.00	9.46	7.12
7,200.01	42.01	170.30	7,101.46	272.52	415.19	-239.23	10.00	9.69	4.12
7,300.01	51.80	173.10	7,169.70	200.34	425.57	-166.45	10.00	9.79	2.80
7,400.01	61.64	175.24	7,224.51	117.27	433.97	-82.98	10.00	9.84	2.13
7,500.02	71.51	177.00	7,264.21	25.84	440.11	8.65	10.00	9.87	1.77
7,600.02	81.39	178.58	7,287.60	-71.19	443.83	105.67	10.00	9.88	1.57
7,699.17	91.20	180.06	7,294.00	-170.00	445.00	204.28	10.00	9.89	1.49
7,700.02	91.20	180.06	7,293.98	-170.85	445.00	205.12	0.00	0.00	0.00
7,800.02	91.20	180.06	7,291.89	-270.83	444.90	304.79	0.00	0.00	0.00
7,900.02	91.20	180.06	7,289.79	-370.80	444.80	404.45	0.00	0.00	0.00
8,000.02	91.20	180.06	7,287.70	-470.78	444.71	504.11	0.00	0.00	0.00
8,100.02	91.20	180.06	7,285.61	-570.76	444.61	603.78	0.00	0.00	0.00
8,200.02	91.20	180.06	7,283.51	-670.74	444.51	703.44	0.00	0.00	0.00
8,300.02	91.20	180.06	7,281.42	-770.72	444.41	803.11	0.00	0.00	0.00
8,400.02	91.20	180.06	7,279.32	-870.70	444.31	902.77	0.00	0.00	0.00
8,500.02	91.20	180.06	7,277.23	-970.67	444.22	1,002.44	0.00	0.00	0.00
8,600.02	91.20	180.06	7,275.13	-1,070.65	444.12	1,102.10	0.00	0.00	0.00
8,700.02	91.20	180.06	7,273.04	-1,170.63	444.02	1,201.77	0.00	0.00	0.00
8,800.02	91.20	180.06	7,270.95	-1,270.61	443.92	1,301.43	0.00	0.00	0.00
8,900.02	91.20	180.06	7,268.85	-1,370.59	443.83	1,401.09	0.00	0.00	0.00
9,000.02	91.20	180.06	7,266.76	-1,470.56	443.73	1,500.76	0.00	0.00	0.00
9,100.02	91.20	180.06	7,264.66	-1,570.54	443.63	1,600.42	0.00	0.00	0.00
9,200.02	91.20	180.06	7,262.57	-1,670.52	443.53	1,700.09	0.00	0.00	0.00
9,300.02	91.20	180.06	7,260.47	-1,770.50	443.44	1,799.75	0.00	0.00	0.00
9,400.02	91.20	180.06	7,258.38	-1,870.48	443.34	1,899.42	0.00	0.00	0.00
9,500.02	91.20	180.06	7,256.29	-1,970.46	443.24	1,999.08	0.00	0.00	0.00
9,600.02	91.20	180.06	7,254.19	-2,070.43	443.14	2,098.75	0.00	0.00	0.00
9,700.02	91.20	180.06	7,252.10	-2,170.41	443.04	2,198.41	0.00	0.00	0.00
9,800.02	91.20	180.06	7,250.00	-2,270.39	442.95	2,298.07	0.00	0.00	0.00
9,900.02	91.20	180.06	7,247.91	-2,370.37	442.85	2,397.74	0.00	0.00	0.00
10,000.02	91.20	180.06	7,245.81	-2,470.35	442.75	2,497.40	0.00	0.00	0.00
10,100.02	91.20	180.06	7,243.72	-2,570.33	442.65	2,597.07	0.00	0.00	0.00
10,199.17	91.20	180.06	7,241.64	-2,669.46	442.56	2,695.89	0.00	0.00	0.00
10,200.02	91.20	180.07	7,241.63	-2,670.30	442.56	2,696.73	2.00	0.43	1.95

Anadarko Petroleum Corp

Planning Report

Database:	edmp	Local Co-ordinate Reference:	Well SCHOMBER 13N-22HZ
Company:	US ROCKIES REGION PLANNING	TVD Reference:	17' RKB + 5007' GL @ 5024.01ft
Project:	COLORADO NORTHERN CWP - 83	MD Reference:	17' RKB + 5007' GL @ 5024.01ft
Site:	Phase 1 Pad 2	North Reference:	True
Well:	SCHOMBER 13N-22HZ	Survey Calculation Method:	Minimum Curvature
Wellbore:	SCHOMBER 13N-22HZ		
Design:	SCHOMBER 13N-22HZ (wp02)		

Planned Survey										
Measured Depth (ft)	Inclination (°)	Azimuth (°)	Vertical Depth (ft)	+N/-S (ft)	+E/-W (ft)	Vertical Section (ft)	Dogleg Rate (°/100usft)	Build Rate (°/100usft)	Turn Rate (°/100usft)	
10,300.02	91.63	182.03	7,239.15	-2,770.25	440.72	2,796.23	2.00	0.43	1.95	
10,400.02	92.06	183.98	7,235.94	-2,870.06	435.48	2,895.32	2.00	0.43	1.96	
10,500.02	92.48	185.94	7,231.98	-2,969.60	426.85	2,993.88	2.00	0.42	1.96	
10,567.95	92.76	187.27	7,228.87	-3,037.00	419.04	3,060.47	2.00	0.42	1.96	
10,600.02	92.76	187.27	7,227.33	-3,068.78	414.99	3,091.84	0.00	0.00	0.00	
10,700.02	92.76	187.27	7,222.50	-3,167.86	402.35	3,189.63	0.00	0.00	0.00	
10,800.02	92.76	187.27	7,217.68	-3,266.95	389.72	3,287.42	0.00	0.00	0.00	
10,900.02	92.76	187.27	7,212.86	-3,366.03	377.08	3,385.21	0.00	0.00	0.00	
10,992.47	92.76	187.27	7,208.40	-3,457.63	365.40	3,475.61	0.00	0.00	0.00	
11,000.02	92.71	187.13	7,208.04	-3,465.11	364.45	3,483.00	1.99	-0.71	-1.87	
11,100.02	92.00	185.26	7,203.93	-3,564.44	353.68	3,581.18	2.00	-0.71	-1.87	
11,200.02	91.29	183.39	7,201.06	-3,664.11	346.15	3,679.95	2.00	-0.71	-1.87	
11,300.02	90.58	181.52	7,199.42	-3,764.00	341.87	3,779.20	2.00	-0.71	-1.87	
11,381.14	90.00	180.00	7,199.01	-3,845.11	340.80	3,859.98	2.00	-0.71	-1.87	
11,400.02	90.00	180.00	7,199.01	-3,863.99	340.80	3,878.80	0.00	0.00	0.00	
11,500.02	90.00	180.00	7,199.01	-3,963.99	340.80	3,978.50	0.00	0.00	0.00	
11,600.02	90.00	180.00	7,199.01	-4,063.99	340.80	4,078.19	0.00	0.00	0.00	
11,700.02	90.00	180.00	7,199.01	-4,163.99	340.80	4,177.89	0.00	0.00	0.00	
11,800.02	90.00	180.00	7,199.01	-4,263.99	340.80	4,277.58	0.00	0.00	0.00	
11,881.15	90.00	180.00	7,199.01	-4,345.11	340.80	4,358.45	0.00	0.00	0.00	

Design Targets									
Target Name	Dip Angle (°)	Dip Dir. (°)	TVD (ft)	+N/-S (ft)	+E/-W (ft)	Northing (usft)	Easting (usft)	Latitude	Longitude
SCHOMBER 13N-22HZ	0.00	0.00	7,199.01	-4,345.11	440.76	1,286,557.29	3,204,277.44	40.117683	-104.769569
- hit/miss target									
- Shape									
- plan misses target center by 99.96ft at 11881.15ft MD (7199.01 TVD, -4345.11 N, 340.80 E)									
- Point									

Casing Points					
Measured Depth (ft)	Vertical Depth (ft)	Name	Casing Diameter (")	Hole Diameter (")	
900.00	900.00	9 5/8"	9-5/8	12-1/4	
7,699.17	7,294.00	7"	7	8-3/4	

Formations					
Measured Depth (ft)	Vertical Depth (ft)	Name	Lithology	Dip (°)	Dip Direction (°)
4,157.08	4,157.00	PARKMAN		0.00	
4,586.08	4,582.00	SUSSEX		0.00	
7,394.78	7,222.00	SHARON SPRINGS		0.00	
7,439.34	7,242.00	NIOBRARA A		0.00	
7,487.17	7,260.00	NIOBRARA B		0.00	

Anadarko Petroleum Corp

Planning Report

Database:	edmp	Local Co-ordinate Reference:	Well SCHOMBER 13N-22HZ
Company:	US ROCKIES REGION PLANNING	TVD Reference:	17' RKB + 5007' GL @ 5024.01ft
Project:	COLORADO NORTHERN CWP - 83	MD Reference:	17' RKB + 5007' GL @ 5024.01ft
Site:	Phase 1 Pad 2	North Reference:	True
Well:	SCHOMBER 13N-22HZ	Survey Calculation Method:	Minimum Curvature
Wellbore:	SCHOMBER 13N-22HZ		
Design:	SCHOMBER 13N-22HZ (wp02)		

Plan Annotations				
Measured Depth (ft)	Vertical Depth (ft)	Local Coordinates		Comment
		+N/-S (ft)	+E/-W (ft)	
4,000.00	4,000.00	0.00	0.00	Start Build 2.00
4,651.00	4,645.41	56.19	47.61	Start 2037.24 hold at 4651.00 MD
6,688.24	6,630.27	406.38	344.29	Start DLS 10.00 TFO 138.87
7,699.17	7,294.00	-170.00	445.00	Start 2500.01 hold at 7699.17 MD
10,199.17	7,241.64	-2,669.46	442.56	Start DLS 2.00 TFO 77.65
10,567.95	7,228.87	-3,037.00	419.04	Start 424.53 hold at 10567.95 MD
10,992.47	7,208.40	-3,457.63	365.40	Start DLS 2.00 TFO -110.71
11,381.14	7,199.01	-3,845.11	340.80	Start 500.00 hold at 11381.14 MD
11,881.15	7,199.01	-4,345.11	340.80	TD at 11881.15