



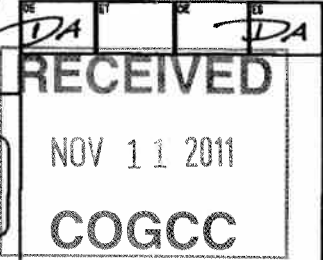
02055327

FORM 4 Rev 12/05

Page 1

State of Colorado Oil and Gas Conservation Commission

1120 Lincoln Street, Suite 801, Denver, Colorado 80203 Phone: (303)894-2100 Fax: (303)894-2109



SUNDRY NOTICE

Submit original plus one copy. This form is to be used for general, technical and environmental sundry information. For proposed or completed operations, describe in full on Technical Information Page (Page 2 of this form.) Identify well or other facility by API Number or by OGCC Facility ID. Operator shall send an informational copy of all sundry notices for wells located in High Density Areas to the Local Government Designee (Rule 603b.)

1. OGCC Operator Number: 66571
2. Name of Operator: OXY USA WTP LP, Attn: Glenda Jones
3. Address: P.O. Box 27757
4. Contact Name: Joan Proulx
5. API Number: 05-045-20088-00
6. Well/Facility Name: Cascade Creek
7. Well/Facility Number: 697-09-15B
8. Location: NWSE 9 6S 97W 6 PM
9. County: Garfield
10. Field Name: Grand Valley
11. Federal, Indian or State Lease Number: N/A

General Notice

CHANGE OF LOCATION: Attach New Survey Plat
CHANGE SPACING UNIT
CHANGE OPERATOR (prior to drilling)
CHANGE WELL NAME
ABANDONED LOCATION
NOTICE OF CONTINUED SHUT IN STATUS
SPUD DATE
REQUEST FOR CONFIDENTIAL STATUS
SUBSEQUENT REPORT OF STAGE, SQUEEZE OR REMEDIAL CEMENT WORK
RECLAMATION

Technical Engineering/Environmental Notice

Notice of Intent
Report of Work Done
Details of work must be described in full on Technical Information Page (Page 2 must be submitted.)
Intent to Recomplete (submit form 2)
Request to Vent or Flare
E&P Waste Disposal
Change Drilling Plans
Repair Well
Beneficial Reuse of E&P Waste
Gross Interval Changed?
Rule 502 variance requested
Status Update/Change of Remediation Plans
Casing/Cementing Program Change
Other: Production csg recement job for Spills and Releases

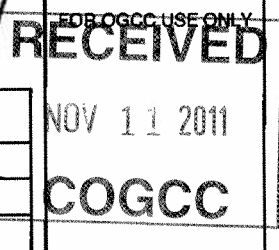
I hereby certify that the statements made in this form are, to the best of my knowledge, true, correct and complete.

Signed: Joan Proulx Date: 11/11/2011 Email: joan_proulx@oxy.com
Print Name: Joan Proulx Title: Regulatory Analyst

COGCC Approved: [Signature] Title: PE II Date: 11/14/2011

CONDITIONS OF APPROVAL, IF ANY:

TECHNICAL INFORMATION PAGE



1. OGCC Operator Number: 66571 API Number: 05-045-20088-00
 2. Name of Operator: OXY USA WTP LP OGCC Facility ID # _____
 3. Well/Facility Name: Cascade Creek Well/Facility Number: 697-09-15B
 4. Location (QtrQtr, Sec, Twp, Rng, Meridian): NWSE 9 6S 97W 6 PM

This form is to be completed whenever a Sundry Notice is submitted requiring detailed report of work to be performed or completed. This form shall be transmitted within 30 days of work completed as a "subsequent" report and must accompany Form 4, page 1.

5. **DESCRIBE PROPOSED OR COMPLETED OPERATIONS**

A Form 4 Sundry Notice was approved on July 18, 2011 outlining the going-forward plans for the Cascade Creek 697-09-15B well after our attempt to perform the primary cementing job on the 4 1/2" production casing in two stages. The attempt was unsuccessful because of the ACP (annulus casing packer) failure. After confirming top of cement of the first stage at 5,000' with a CBL-VDL log we resumed operations with a remedial cementing job.

A copy of the post job report from Halliburton is attached.

Operations Detail

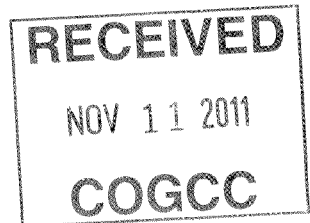
Date	From	To	Hrs (hr)	Activity	Comments
07/24/2011	13:00	13:09	0:09	Pressure Test	Test Cementing Unit lines to 3180 psi, Ok.
07/24/2011	13:09	13:17	0:08	Circulate Well	Circulate well with fresh water, checking communication between the 4 1/2" casing and the 9 5/8" casing x 4 1/2" annuli (Stage tool is properly opened).
07/24/2011	13:17	14:11	0:54	Pump gel pill	Pump 8 bbl of a gel pill to protect stage tool mechanism.
07/24/2011	14:11	18:35	4:24	Cement 8 3/4" x 4 1/2" annuli	Pump 32 bbl of fresh water (spacer), 192 bbl (575 sks) of cement slurry 12.4 ppg and displace with 145 bbl of fresh water. See attached cementing chart ("Recement Stage 1")
07/24/2011	18:35	18:41	0:06	Circulate Well	Circulate well with fresh water in order to clean Stage tool port and 9 5/8" x 4 1/2" annuli.
07/24/2011	18:41	22:59	4:18	Waiting on Cement	Waiting on cementing.
07/24/2011	22:59	23:48	0:49	Cement 9 5/8" x 4 1/2" annuli	Pump 15 bbl of fresh water (spacer), 158 bbl (500 sks) of cement slurry 12.4 ppg and displace with 30 bbl of fresh water. Got 10 bbls of cement to surface. See attached cementing chart ("Recement Stage 2").
07/24/2011	23:48	23:51	0:03	Bump Plug, close Stage tool	Bump plug with 1450 psi, pressure up to 2500 psi to close stage tool. Relief pressure to zero and Stage tool held.

Oxy is continuing to investigate and evaluate the source of the bradenhead pressure on this well.

HALLIBURTON

OXY GRAND JUNCTION EBUSINESS

**CC 697-09-15B
GRAND VALLEY/TRAIL RIDGE
Garfield County , Colorado**



Recement Service
24-Jul-2011

Post Job Report

The Road to Excellence Starts with Safety

Sold To #: 344034	Ship To #: 2825576	Quote #:	Sales Order #: 8342172
Customer: OXY GRAND JUNCTION EBUSINESS		Customer Rep: Benevides, Simon	
Well Name: CC	Well #: 697-09-15B	API/UWI #:	
Field: GRAND VALLEY/TRAIL RIDGE	City (SAP): PARACHUTE	County/Parish: Garfield	State: Colorado
Contractor: H&P 330	Rig/Platform Name/Num: H&P 330		
Job Purpose: Recement Service			NOV 11 2011
Well Type: Development Well	Job Type: Recement Service		
Sales Person: ROYSTER, JACOB	Srvc Supervisor: MAGERS, MICHAEL	MBU ID Emp #:	339439

RECEIVED
NOV 11 2011
COGCC

Job Personnel

HES Emp Name	Exp Hrs	Emp #	HES Emp Name	Exp Hrs	Emp #	HES Emp Name	Exp Hrs	Emp #
BORSZICH, STEPHEN A	20	412388	DOUT, JACOB J	14	430298	EICKHOFF, ROBERT Edward	14	495311
GOWAN, WESLEY	20	496205	GREGORY, JON D	14	439067	LESTER, LEVI William	14	474117
MAGERS, MICHAEL Gerard	20	339439	MILLER, KEVIN Paul	14	443040	REEVES, BRANDON W	14	287883
ROSS, CHARLES Raymond	14	453128	WALPOLE, DARREN Livingston	14	485294	ZUMWALT, ORVILLE Raymond	20	398157

Equipment

HES Unit #	Distance-1 way	HES Unit #	Distance-1 way	HES Unit #	Distance-1 way	HES Unit #	Distance-1 way
10713294	240 mile	10856450	240 mile	10867423	240 mile	10872429	240 mile
10897887	240 mile	10938673	240 mile	10938677	240 mile	10938678	240 mile
10969711	240 mile	10973565	240 mile	10988964	240 mile	11259883	240 mile
11259886	240 mile	11360883	240 mile				

Job Hours

Date	On Location Hours	Operating Hours	Date	On Location Hours	Operating Hours	Date	On Location Hours	Operating Hours
02/24/2011	14	8						
TOTAL			<i>Total is the sum of each column separately</i>					

Job

Job Times

Formation Name	Formation Depth (MD)	Top	Bottom	Called Out	Date	Time	Time Zone
Form Type			BHST	On Location	24 - Jul - 2011	06:40	MST
Job depth MD	2620. ft		Job Depth TVD	Job Started	24 - Jul - 2011	13:00	MST
Water Depth			Wk Ht Above Floor	Job Completed	24 - Jul - 2011	23:51	MST
Perforation Depth (MD)	From		To	Departed Loc	25 - Jul - 2011	01:00	MST

Well Data

Description	New / Used	Max pressure psig	Size in	ID in	Weight lbm/ft	Thread	Grade	Top MD ft	Bottom MD ft	Top TVD ft	Bottom TVD ft
Sales/Rental/3rd Party (HES)											

Sales/Rental/3rd Party (HES)

Description	Qty	Qty uom	Depth	Supplier
ADC (AUTO DENSITY CTRL) SYS, /JOB,ZI	1	JOB		
R/A DENSOMETER W/CHART RECORDER,/JOB,ZI	1	JOB		
PORT. DATA ACQUIS. W/OPTICEM RT W/HES	1	EA		

Tools and Accessories

Type	Size	Qty	Make	Depth	Type	Size	Qty	Make	Depth	Type	Size	Qty	Make
Guide Shoe					Packer					Top Plug			
Float Shoe					Bridge Plug					Bottom Plug			
Float Collar					Retainer					SSR plug set			
Insert Float										Plug Container			
Stage Tool										Centralizers			

Miscellaneous Materials											
Gelling Agt		Conc		Surfactant		Conc		Acid Type		Qty	Conc %
Treatment Fld		Conc		Inhibitor		Conc		Sand Type		Size	Qty
Fluid Data											
Stage/Plug #: 1											
Fluid #	Stage Type	Fluid Name			Qty	Qty uom	Mixing Density lbm/gal	Yield ft ³ /sk	Mix Fluid Gal/sk	Rate bbl/min	Total Mix Fluid Gal/sk
1	Water Spacer				10.00	bbl	.	.0	.0	.0	
2	1st Lead cement	EXTENDACEM (TM) SYSTEM (452981)			575.0	sacks	12.4	1.89	10.12		10.12
		10.12 Gal FRESH WATER									
3	Displacement				145.00	bbl	.	.0	.0	.0	
4	2nd Lead Cement	ECONOCEM (TM) SYSTEM (452992)			500.0	sacks	12.4	1.84	9.93		9.93
		9.93 Gal FRESH WATER									
5	Displacement				40.00	bbl	.	.0	.0	.0	
Calculated Values			Pressures			Volumes					
Displacement	185	Shut In: Instant				Lost Returns		Cement Slurry	351	Pad	
Top Of Cement	SURFACE	5 Min				Cement Returns	10	Actual Displacement	185	Treatment	
Frac Gradient		15 Min				Spacers	103	Load and Breakdown		Total Job	810
Rates											
Circulating	NONE	Mixing			1/5	Displacement	1/5	Avg. Job		2	
Cement Left In Pipe	Amount	0 ft	Reason	Shoe Joint							
Frac Ring # 1 @	ID	Frac ring # 2 @	ID	Frac Ring # 3 @	ID	Frac Ring # 4 @	ID				
The Information Stated Herein Is Correct						Customer Representative Signature					

RECEIVED
 NOV 11 2011
COGCC

HALLIBURTON

Cementing Job Log

The Road to Excellence Starts with Safety

Sold To #: 344034	Ship To #: 2825576	Quote #:	Sales Order #: 8342172
Customer: OXY GRAND JUNCTION EBUSINESS		Customer Rep: Benevides, Simon	
Well Name: CC	Well #: 697-09-15B	API/UWI #:	
Field: GRAND VALLEY/TRAIL RIDGE	City (SAP): PARACHUTE	County/Parish: Garfield	State: Colorado
Legal Description:			
Lat:		Long:	
Contractor: H&P 330	Rig/Platform Name/Num: H&P 330		
Job Purpose: Recement Service		Ticket Amount:	
Well Type: Development Well		Job Type: Recement Service	
Sales Person: ROYSTER, JACOB	Srv Supervisor: MAGERS, MICHAEL	MBU ID Emp #: 339439	

RECEIVED
 NOV 11 2011
COGCC

Activity Description	Date/Time	Cht #	Rate bbl/min	Volume bbl		Pressure psig		Comments
				Stage	Total	Tubing	Casing	
Crew Leave Yard	07/24/2011 03:30							HES ALL PRESENT
Arrive At Loc	07/24/2011 06:40							HES PUMPING PRODUCTION JOB/ON STANDBY TILL DONE
Assessment Of Location Safety Meeting	07/24/2011 07:00							GOOD CONDITION
Pre-Rig Up Safety Meeting	07/24/2011 10:00							PRODUCTION JOB COMPLETE/ON LOCATION FOR 2 STAGE
Rig-Up Equipment	07/24/2011 10:05							1 SQUEEZE MANIFOLD REROUTE IRON
Safety Huddle	07/24/2011 12:50							RIG SUPERVISORS AND HES ALL PRESENT
Start Job	07/24/2011 13:00							
Pressure Test	07/24/2011 13:09		0.5	0.5			3180.0	PSI TEST OK
Circulate Well	07/24/2011 13:17		3	80			49.0	FRESH WATER
Pump Gel Pill	07/24/2011 14:11		2	8			50.0	MADE UP IN MIXING SIDE OF PUMP/BY HAND/RIG PROVIDED MATERIAL
Pump Water	07/24/2011 14:15		2	32.3			50.0	FRESH WATER
Pump Lead Cement	07/24/2011 14:27		1.5	193			192.0	EXTENDACEM 575 SKS 12.4 PPG 1.89 FT3/SK 10.12 GAL/SK LEFT 817 SKS NOT USED ON LOCATION/ CHARGED FOR WHAT HES ONLY USED

Sold To #: 344034

Ship To #: 2825576

Quote #:

Sales Order #:

8342172

SUMMIT Version: 7.20.130

Friday, July 29, 2011 07:52:00

HALLIBURTON

Cementing Job Log

Pump Water	07/24/2011 16:22		1.1	145		975.0	FRESH WATER
------------	---------------------	--	-----	-----	--	-------	-------------

RECEIVED
NOV 11 2011
COGCC

Sold To #: 344034

Ship To #: 2825576

Quote #:

Sales Order #:

8342172

SUMMIT Version: 7.20.130

Friday, July 29, 2011 07:52:00

HALLIBURTON

Cementing Job Log

Activity Description	Date/Time	Cht #	Rate bbl/min	Volume bbl		Pressure psig		Comments
				Stage	Total	Tubing	Casing	
Shutdown	07/24/2011 18:35							
Pump Water	07/24/2011 18:41		4	171			283.0	FRESH WATER
Shutdown	07/24/2011 19:27							
End Job	07/24/2011 19:32							
Comment	07/24/2011 20:29							ON STANDBY FOR STAGE 2 /LOAD BIN WITH 2ND STAGE LEAD/SCHEDULED START 22:30
Start Job	07/24/2011 22:59							
Pump Spacer 1	07/24/2011 23:00		5	15			210.0	FRESH WATER
Pump Lead Cement	07/24/2011 23:01		5	158			350.0	ECONOCEM 500 SKS 12.4 PPG 1.84 FT3/SK 9.93 GAL/SK
Shutdown	07/24/2011 23:33							
Clean Lines	07/24/2011 23:34		5	12				CLEAN LINES AND PUMPS
Drop Plug	07/24/2011 23:38							PLUG AWAY
Pump Displacement	07/24/2011 23:39		5	30			820.0	FRESH WATER
Slow Rate	07/24/2011 23:46		3	10			820.0	GOT 10 BBLS ON CEMENT TO SURFACE
Bump Plug	07/24/2011 23:48		3	40			1450.0	BUMPED PLUG
Close Multiple Stage Cementer	07/24/2011 23:49			40			1800.0	CLOSED ACP
Check Floats	07/24/2011 23:50						2500.0	FLOATS HELD/GOT 1 BBL BACK INTO DISPLACEMENT TANK
End Job	07/24/2011 23:51							THANKS FOR USING HES AND THE CREW OF MIKE MAGERS

RECEIVED
NOV 11 2011
COGCC

Sold To #: 344034

Ship To #: 2825576

Quote #:

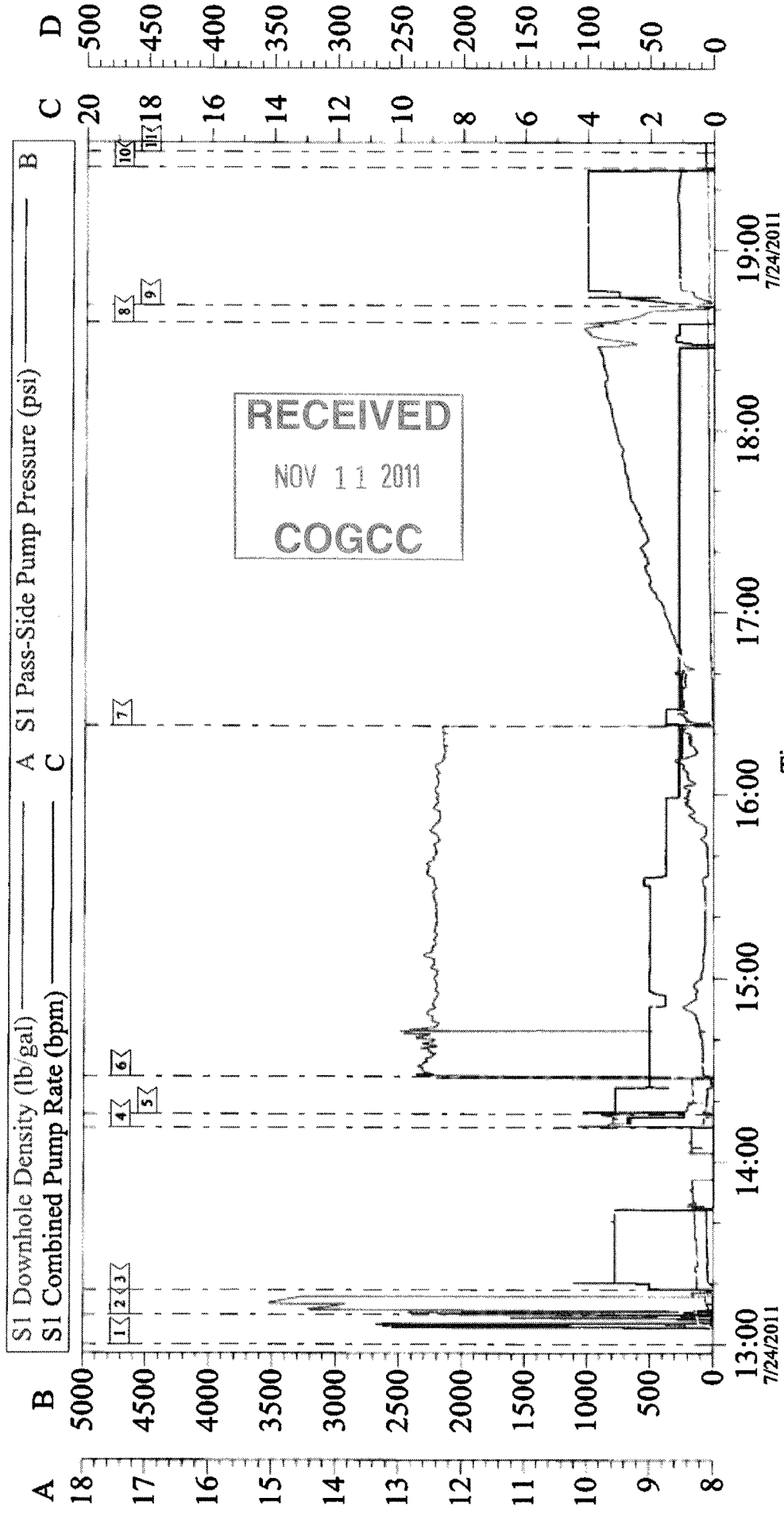
Sales Order #:

8342172

SUMMIT Version: 7.20.130

Friday, July 29, 2011 07:52:00

OXY H&P 330 RECEMENT STAGE 1



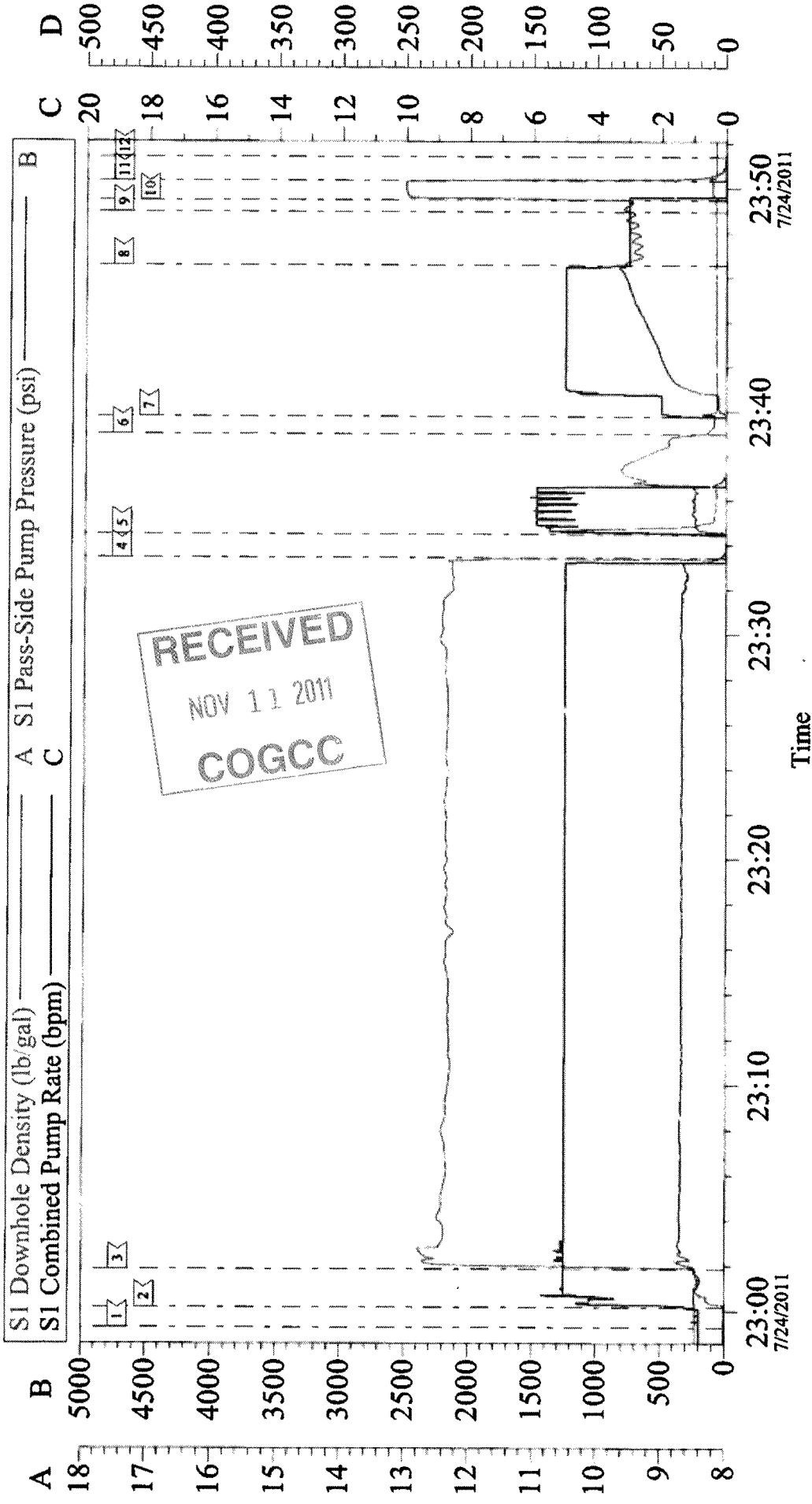
Local Event Log			
Intersection	SPPP	Intersection	SPPP
1 START JOB	13:00:00 -1,000	2 PRESSURE TEST	13:09:47 1194
4 PUMP GEL	14:11:17 -12.00	5 PUMP H2O DISPLACEMENT	14:15:33 2,000
7 PUMP H2O DISPLACEMENT	16:22:17 139.6	8 SHUT DOWN	18:35:33 940.9
10 SHUT DOWN	19:27:11 1,000	11 END JOB	19:32:23 1,000
		3 CIRCULATE CASING	13:17:48 1,000
		6 PUMP LEAD CEMENT	14:27:42 12.11
		9 PUMP H2O DISPLACEMENT	18:41:11 6,000

Customer: OXY H&P 330
Well Description: CC 697-09-15B
Company Rep: MARCO SILVA

Job Date: 24-Jul-2011
Job Type: RE-CEMENT
Cement Supervisor: MIKE MAGERS

Sales Order #: 8342172
ADC Used: YES
Elite #: 7 STEVE BORSZICH

OXY H&P 330 RE CEMENT STAGE 2



Customer: OXY H&P 330
Well Description: CC 697-09-15B
Company Rep: MARCO SILVA

Job Date: 24-Jul-2011
Job Type: RE CEMENT STAGE 2
Cement Supervisor: MIKE MAGERS

Sales Order #: 8342172
ADC Used: YES
Elite #: 7
BRANDON REEVES