

The Road to Excellence Starts with Safety

Sold To #: 353810	Ship To #: 2862067	Quote #:	Sales Order #: 9023917
Customer: XTO ENERGY INC EBUSINESS		Customer Rep:	
Well Name: Apache Canyon		Well #: 20-03	API/UWI #:
Field:	City (SAP): TRINIDAD	County/Parish: Las Animas	State: Colorado
Contractor: Pense Drilling		Rig/Platform Name/Num: #19	
Job Purpose: Squeeze Hole in Casing			
Well Type: Development Well		Job Type: Squeeze Hole in Casing	
Sales Person: FLING, MATTHEW		Srvc Supervisor: SALINAS, JOSE	MBU ID Emp #: 100319

Job Personnel

HES Emp Name	Exp Hrs	Emp #	HES Emp Name	Exp Hrs	Emp #	HES Emp Name	Exp Hrs	Emp #
DIRKS, RICHARD E	3	485940	OTERI, VAUGHN Steeves	3	443828	SALINAS, JOSE R	3	100319

Equipment

HES Unit #	Distance-1 way	HES Unit #	Distance-1 way	HES Unit #	Distance-1 way	HES Unit #	Distance-1 way
11605597	250 mile	11667703C	250 mile	53301	250 mile		

Job Hours

Date	On Location Hours	Operating Hours	Date	On Location Hours	Operating Hours	Date	On Location Hours	Operating Hours
10-31-11	3	1						

TOTAL Total is the sum of each column separately

Job

Job Times

Formation Name	Formation Depth (MD) Top	Bottom	Called Out	Date	Time	Time Zone
Form Type	BHST		On Location	31 - Oct - 2011	12:30	MST
Job depth MD	1556. ft	Job Depth TVD	Job Started	31 - Oct - 2011	13:15	MST
Water Depth		Wk Ht Above Floor	Job Completed	31 - Oct - 2011	14:05	MST
Perforation Depth (MD) From		To	Departed Loc	31 - Oct - 2011	15:15	MST

Well Data

Description	New / Used	Max pressure psig	Size in	ID in	Weight lbm/ft	Thread	Grade	Top MD ft	Bottom MD ft	Top TVD ft	Bottom TVD ft
11" Openhole				11.				43.	597.		
8 5/8" Surface Casing	Unknown		8.625	8.097	24.				43.		

Tools and Accessories

Type	Size	Qty	Make	Depth	Type	Size	Qty	Make	Depth	Type	Size	Qty	Make
Guide Shoe					Packer					Top Plug			
Float Shoe					Bridge Plug					Bottom Plug			
Float Collar					Retainer					SSR plug set			
Insert Float										Plug Container			
Stage Tool										Centralizers			

Miscellaneous Materials

Gelling Agt	Conc	Surfactant	Conc	Acid Type	Qty	Conc	%
Treatment Fld	Conc	Inhibitor	Conc	Sand Type	Size	Qty	

Fluid Data

Stage/Plug #: 1										
Fluid #	Stage Type	Fluid Name	Qty	Qty uom	Mixing Density lbm/gal	Yield ft3/sk	Mix Fluid Gal/sk	Rate bbl/min	Total Mix Fluid Gal/sk	

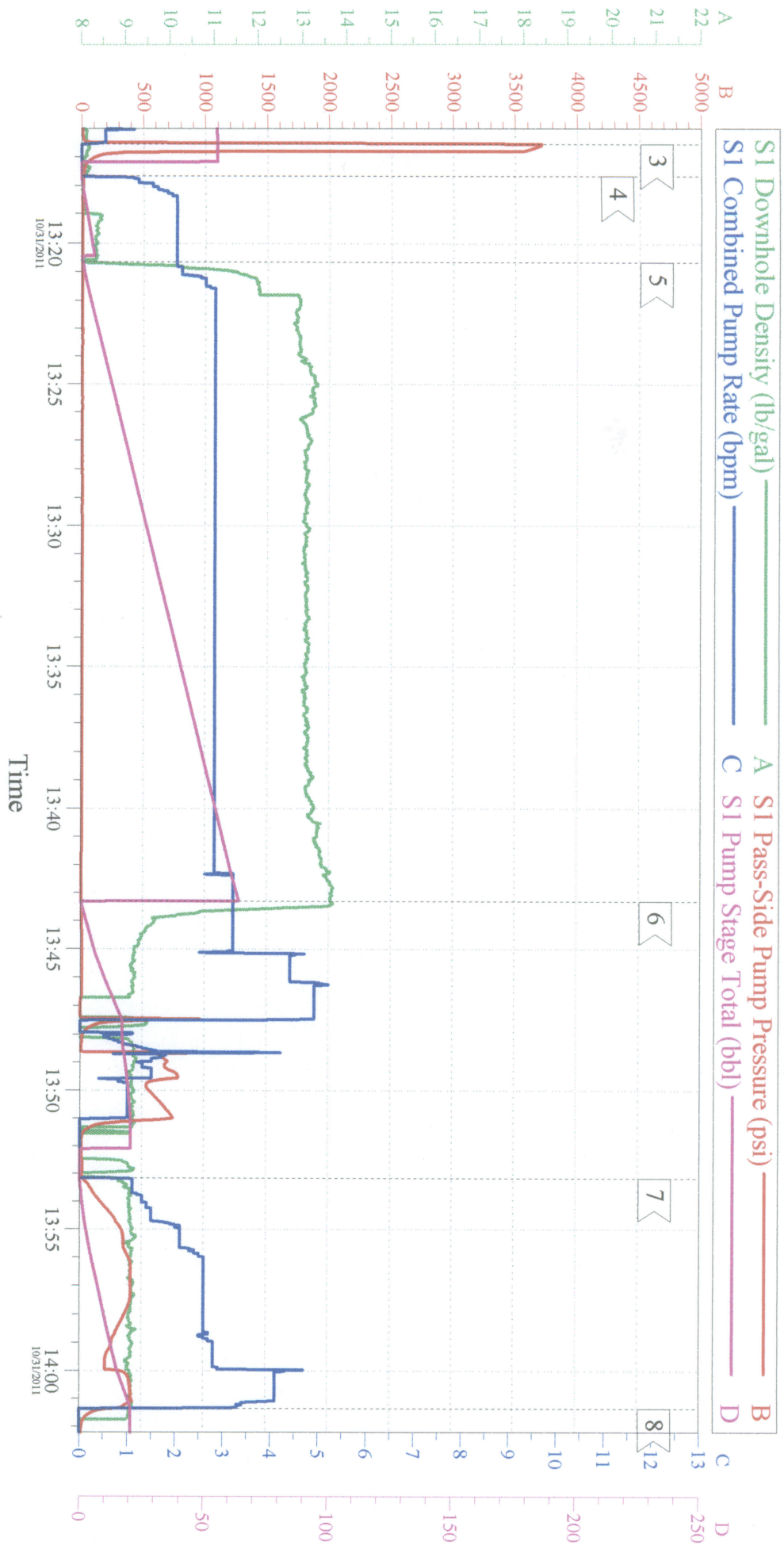
Stage/Plug #: 1									
Fluid #	Stage Type	Fluid Name	Qty	Qty uom	Mixing Density lbm/gal	Yield ft ³ /sk	Mix Fluid Gal/sk	Rate bbl/min	Total Mix Fluid Gal/sk
1	FRESH WATER		5.00	bbl	8.33	.0	42.0	2.0	
2	Trinidad Surface Blend	TRINIDAD SURFACE BLEND - SBM (137081)	75.0	sacks	13.	2.02	10.55	2.0	10.55
	10.55 Gal	FRESH WATER							
Calculated Values		Pressures		Volumes					
Displacement		Shut In: Instant		Lost Returns		Cement Slurry		Pad	
Top Of Cement		5 Min		Cement Returns		Actual Displacement		Treatment	
Frac Gradient		15 Min		Spacers		Load and Breakdown		Total Job	
Rates									
Circulating		Mixing		Displacement		Avg. Job			
Cement Left In Pipe	Amount	0 ft	Reason	Shoe Joint					
Frac Ring # 1 @	ID	Frac ring # 2 @	ID	Frac Ring # 3 @	ID	Frac Ring # 4 @	ID		
The Information Stated Herein Is Correct				Customer Representative Signature					

The Road to Excellence Starts with Safety

Sold To #: 353810	Ship To #: 2862067	Quote #:	Sales Order #: 9023917
Customer: XTO ENERGY INC EBUSINESS		Customer Rep:	
Well Name: Apache Canyon	Well #: 20-03	API/UWI #:	
Field:	City (SAP): TRINIDAD	County/Parish: Las Animas	State: Colorado
Legal Description:			
Lat:		Long:	
Contractor: Pense Drilling		Rig/Platform Name/Num: #19	
Job Purpose: Squeeze Hole in Casing			Ticket Amount:
Well Type: Development Well		Job Type: Squeeze Hole in Casing	
Sales Person: FLING, MATTHEW		Srvc Supervisor: SALINAS, JOSE	MBU ID Emp #: 100319

Activity Description	Date/Time	Cht #	Rate bbl/min	Volume bbl		Pressure psig		Comments
				Stage	Total	Tubing	Casing	
Arrive at Location from Service Center	10/31/2011 12:30							
Pre-Rig Up Safety Meeting	10/31/2011 12:40							
Rig-Up Equipment	10/31/2011 12:50							
Pre-Job Safety Meeting	10/31/2011 13:05							
Test Lines	10/31/2011 13:16		2	2			3500.0	TEST LINES WITH WATER
Pump Spacer	10/31/2011 13:17		3	5			13.0	PUMP 5 BBLS WATER SPACER
Pump Cement	10/31/2011 13:20		3	27			5.0	PUMP 75 SKS TRINIDAD BLEND CMT @ 13.0 PPG 27 BBLS
Pump Displacement	10/31/2011 13:43		3	9.8			7.0	PUMP DISPLACEMENT WITH WATER
Reverse Circ Well	10/31/2011 13:53		3	24			22.0	REVERSE OUT WELL 24 BBLS OF WATER
Shutdown	10/31/2011 14:01		0	0			.0	SHUT DOWN
Pre-Rig Down Safety Meeting	10/31/2011 14:10							
Rig-Down Equipment	10/31/2011 14:15							
Depart Location Safety Meeting	10/31/2011 15:05							
Depart Location for Service Center or Other Site	10/31/2011 15:15							

XTO ENERGY
APACHE CANYON 20-03 SQUEEZE PERFS.
SO# 9023917



Global Event Log

Intersection	SPPP	Intersection	SPPP	Intersection	SPPP
3 Test Lines	13:16:33 3709	4 Pump Spacer 1	13:17:40 13.00	5 Pump Cement	13:20:40 5.000
6 Pump Displacement	13:43:18 7.000	7 Reverse Circ Well	13:53:09 22.52	8 Shutdown	14:01:21 271.9

Customer:	Job Date:	Sales Order #:	HALLIBURTON
Well Description:	Job Type:	ADC Used:	OptiCem v6.4.9
Company Rep:	Cement Supervisor:	Elite #:	31-Oct-11 14:08