

**Scale 1:240 (5"=100') Imperial
Measured Depth Log**

Well Name: GOODMAN POINT #22 Lateral

Location: SHL:1482 FNL & 345 FEL, Section 32 T37N R18W NMPM

License Number:

Region: Colorado

Spud Date: 18SEPT11

Drilling Completed:

Surface Coordinates: SHL; 2200 FSL &208 FEL, Section 32 T37N R18W NMPM

Bottom Hole Coordinates: Horizontal Well, 1518 FSL & 346 FEL, Section 29 T37N, R18W 180 deg azimuth from SHL (2000' max lateral extension)

Ground Elevation (ft): 6460'

K.B. Elevation (ft): 6485'

Logged Interval (ft): 8283' To: 10100 Total Depth (ft):

Formation: Leadville dolomite Limestone

Type of Drilling Fluid: Fresh Water

Printed by MUD.LOG from WellSight Systems 1-800-447-1534 www.WellSight.com

OPERATOR

Company: KINDER MORGAN CO2 Company, L.P.

**Address: 17801 Hwy 491
Colorado**

GEOLOGIST

Name: LEON WALTERS

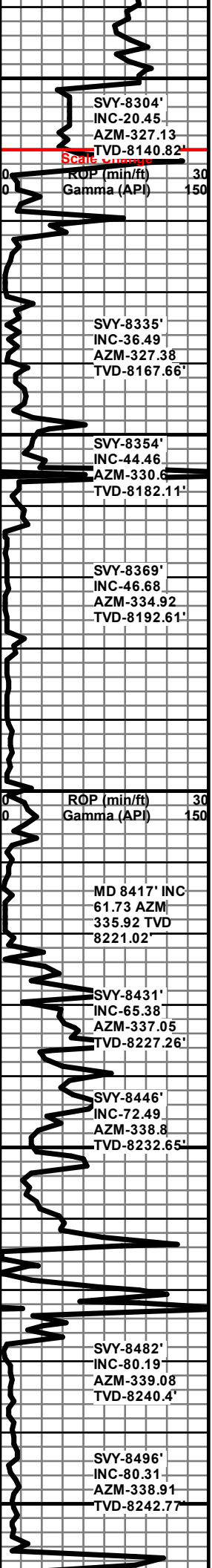
Company: ABOVE ENTERPRISE, A Mud Logging Company

**Address: 510 Old Lubbock Hwy
Snyder, Texas 79549**

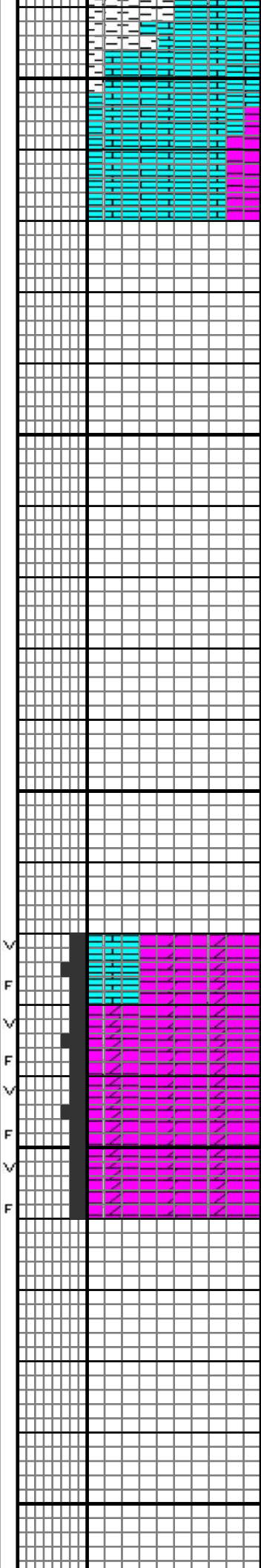
Cores

DSTs

Comments



8300
8350
8400
8450
8500



LS: WH-OFFFWH, FRM-HD,
MXLN-CPTOXLN, VITRUS-SMTH

20OCT11 CIRC/DRLG @ 8321'

LOST CIRCULATION @ 8324'

NO SAMPLE @ 8330'

21OCT11 LOSTCIRC @ 8345'

NO SAMPLE @ 8340'

22OCT11 TIH @ 8345'

NO SAMPLE @ 8350'

23OCT11 POOH @ 8354'

NO SAMPLE @ 8360'

NO SAMPLE @ 8370'

NO SAMPLE @ 8380'

NO SAMPLE @ 8390'

NO SAMPLE @ 8400'

NO SAMPLE @ 8410'

NO SAMPLE @ 8420'

LS: WH-OFFFWH, FRM-HD,
MXLN-CPTOXLN, VITRUS-SMTH

DOL: OFFFWH-LTGY, FRM-HD,
GRANLR-SUCROSIC, FRAC & VUGGY,
G-POR

DOL: OFFFWH-LTGY, FRM-HD,
GRANLR-SUCROSIC, FRAC & VUGGY,
G-POR

24OCT11 DRLG @ MD-8462'

TVD-8221 @ 8417'

25OCT11 POOH DPTH 8462'

NO SAMPLE @ 8470' NO
RETURNS/CIRCULATION

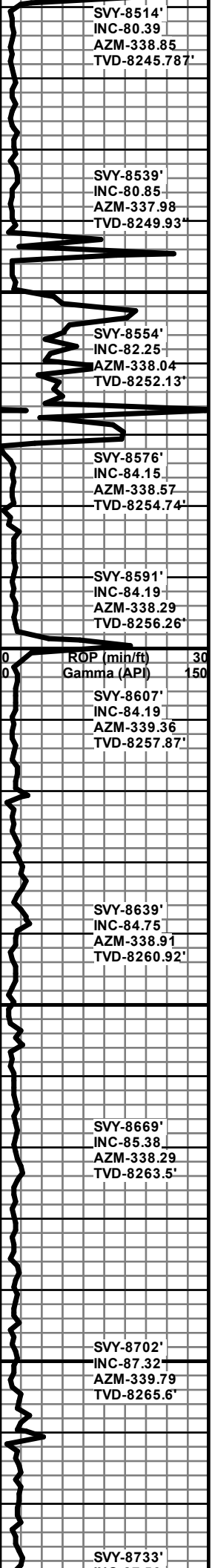
NO SAMPLE @ 8480' NO
RETURNS/CIRCULATION

NO SAMPLE @ 8490' NO
RETURNS/CIRCULATION
26OCT11 DRLG DPTH 8500'

NO SAMPLE @ 8500' NO
RETURNS/CIRCULATION

NO SAMPLE @ 8510' NO

TG (Units) 100
C1 (units) 10000
C2 (units) 10000
C3 (units) 10000
C4 (units) 10000
C5 (units) 10000



8550

8600

8650

8700

RETURNS/CIRCULATION

NO SAMPLE @ 8520' NO RETURNS/CIRCULATION

NO SAMPLE @ 8530' NO RETURNS/CIRCULATION

NO SAMPLE @ 8540' NO RETURNS/CIRCULATION

NO SAMPLE @ 8550' NO RETURNS/CIRCULATION

NO SAMPLE @ 8560' NO RETURNS/CIRCULATION

27OCT11 DRLG @ DPTH 8567'

NO SAMPLE @ 8580' NO RETURNS/CIRCULATION

NO SAMPLE @ 8590' NO RETURNS/CIRCULATION

NO SAMPLE @ 8600' NO RETURNS/CIRCULATION

NO SAMPLE @ 8610' NO RETURNS/CIRCULATION

NO SAMPLE @ 8620' NO RETURNS/CIRCULATION

NO SAMPLE @ 8630' NO RETURNS/CIRCULATION

NO SAMPLE @ 8640' NO RETURNS/CIRCULATION

NO SAMPLE @ 8650' NO RETURNS/CIRCULATION

NO SAMPLE @ 8660' NO RETURNS/CIRCULATION

NO SAMPLE @ 8670' NO RETURNS/CIRCULATION

NO SAMPLE @ 8680' NO RETURNS/CIRCULATION

NO SAMPLE @ 8690' NO RETURNS/CIRCULATION

NO SAMPLE @ 8700' NO RETURNS/CIRCULATION

NO SAMPLE @ 8710' NO RETURNS/CIRCULATION

NO SAMPLE @ 8720' NO RETURNS/CIRCULATION

NO SAMPLE @ 8730' NO RETURNS/CIRCULATION

TG (Units)	100
C1 (units)	10000
C2 (units)	10000
C3 (units)	10000
C4 (units)	10000
C5 (units)	10000

INC-87.56
AZM-338.91
TVD-8266.98'

NO SAMPLE @ 8730' NO
RETURNS/CIRCULATION

NO SAMPLE @ 8740' NO
RETURNS/CIRCULATION

8750

NO SAMPLE @ 8750' NO
RETURNS/CIRCULATION

SVY-8764'
INC-87.50
AZM-339.66
TVD-8268.32'

NO SAMPLE @ 8760' NO
RETURNS/CIRCULATION

NO SAMPLE @ 8770' NO
RETURNS/CIRCULATION

NO SAMPLE @ 8780' NO
RETURNS/CIRCULATION

NO SAMPLE @ 8790' NO
RETURNS/CIRCULATION

SVY-8797'
INC-87.5
AZM-340.87
TVD-8269.76'

NO SAMPLE @ 8800' NO
RETURNS/CIRCULATION

ROP (min/ft) 30
Gamma (API) 150

8800

NO SAMPLE @ 8810' NO
RETURNS/CIRCULATION

NO SAMPLE @ 8820' NO
RETURNS/CIRCULATION

SVY-8828'
INC-85.62
AZM-339.99
TVD-8271.62'

NO SAMPLE @ 8830' NO
RETURNS/CIRCULATION

NO SAMPLE @ 8840' NO
RETURNS/CIRCULATION

8850

NO SAMPLE @ 8850' NO
RETURNS/CIRCULATION

SVY-8858'
INC-85.56
AZM-341.16
TVD-8273.93'

NO SAMPLE @ 8860' NO
RETURNS/CIRCULATION

NO SAMPLE @ 8870' NO
RETURNS/CIRCULATION

NO SAMPLE @ 8880' NO
RETURNS/CIRCULATION

NO SAMPLE @ 8890' NO
RETURNS/CIRCULATION

SVY-8892'
INC-86.16
AZM-339.51
TVD-8276.38'

8900

NO SAMPLE @ 8900' NO
RETURNS/CIRCULATION

NO SAMPLE @ 8910' NO
RETURNS/CIRCULATION

NO SAMPLE @ 8920' NO
RETURNS/CIRCULATION

SVY-8923'
INC-85.44
AZM-339.91
TVD-8278'

**28OCT11 DRLG @
8930' NO
SMPLS/CIRC/RETURNS**

NO SAMPLE @ 8940' NO
RETURNS/CIRCULATION

TG (Units) 100
C1 (units) 10000
C2 (units) 10000
C3 (units) 10000
C4 (units) 10000
C5 (units) 10000

