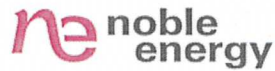


1625 Broadway
Suite 2000
Denver, CO 80202

Tel: 303.228.4000
Fax: 303.228.4280

www.nobleenergyinc.com



November 9, 2011

Colorado Oil and Gas Conservation Commission
The Chancery Building
1120 Lincoln Street, Suite 801
Denver, CO 80203

Attn: Mr. David Neslin, Director

RE: DYER USX AB 35-67-1HN
Niobrara New Drill
Township 7 North, Range 64 West, 6th P.M.
Section 34: NE/4NE/4: 367' FNL & 270' FEL (Surface Location)
Section 35: SW/4NW/4: 1485' FNL & 519' FWL (Beginning of Lateral)
Section 35: SE/4NE/4: 1590' FNL & 535' FEL (Bottom Hole Location)
Weld County, Colorado

Mr. Neslin:

Noble Energy, Inc. ("NEI") is planning to drill the captioned boundary well in accordance with the provisions of COGCC Rule 318A.e.

NEI's proposed wellbore spacing unit consists of the N/2, Sec. 35, T7N, R64W, creating a 320-acre wellbore spacing unit for the Niobrara formation. NEI is the only owner within the proposed wellbore spacing unit, therefore NEI hereby attests that no notice letters are required under COGCC Rule 318A(l).e.(6).

Enclosed are copies of the following documents to assist you in your review and approval of NEI's proposed APD for the captioned well:

- Map & plat illustrating proposed wellbore spacing unit.

Thank you for your attention to the enclosed. NEI respectfully requests that the COGCC review the enclosed information and approve the Application for Permit to Drill the captioned well.

Sincerely,

Mari Clark
Regulatory Analyst II
Noble Energy Inc.

The map displays the Dyer USAB area, bounded by a blue rectangle. The map is overlaid with a grid of latitude and longitude lines. The following locations and connections are shown:

- Locations:**
 - DYER USAB 36-67-1HN (top left)
 - D DYER 41-4 (top left)
 - LANG 11-35 (top left)
 - Lang USAB 35-03 (top center)
 - Lang USAB 35-15D (top center)
 - Lang USAB 35-05D (top center)
 - PETTINGER USAB 35-02 (top center)
 - PETTINGER USAB 35-04B (top center)
 - D DYER 42-4 (middle left)
 - LANG-USAB 35-6 (middle center)
 - PETTINGER USAB 35-7 (middle center)
 - PETTINGER-USAB 35-8 (middle right)
 - CECIL USAB 35-11D (bottom center)
 - CECIL USAB 35-12D (bottom center)
 - TORRES-USAB 35-9 (bottom right)
 - GARCIA USAB 35-10D (bottom right)
 - GARCIA USAB 35-23 (bottom right)
 - DYER - USAB 35-13 (bottom left)
 - CECIL USAB 35-14 (bottom center)
 - CECIL 35-1 (bottom center)
 - OWL CREEK 49 (bottom right)
- Connections:**
 - A dashed black line connects Dyer USAB 36-67-1HN to D DYER 41-4.
 - A solid green line connects D DYER 41-4 to D DYER 42-4.
 - A solid green line connects D DYER 42-4 to Lang USAB 35-03.
 - A solid green line connects Lang USAB 35-03 to Lang USAB 35-15D.
 - A solid green line connects Lang USAB 35-15D to Lang USAB 35-05D.
 - A solid green line connects Lang USAB 35-05D to PETTINGER USAB 35-02.
 - A solid green line connects PETTINGER USAB 35-02 to PETTINGER USAB 35-04B.
 - A solid green line connects PETTINGER USAB 35-04B to PETTINGER-USAB 35-8.
 - A solid green line connects CECIL USAB 35-11D to CECIL USAB 35-12D.
 - A solid green line connects CECIL USAB 35-11D to TORRES-USAB 35-9.
 - A solid green line connects CECIL USAB 35-12D to TORRES-USAB 35-9.
 - A solid green line connects TORRES-USAB 35-9 to GARCIA USAB 35-10D.
 - A solid green line connects GARCIA USAB 35-10D to GARCIA USAB 35-23.
 - A solid green line connects DYER - USAB 35-13 to CECIL USAB 35-14.
 - A solid green line connects CECIL USAB 35-14 to CECIL 35-1.
 - A solid green line connects CECIL 35-1 to OWL CREEK 49.

Proposed 320 acre spacing unit

Bottom Hole Location

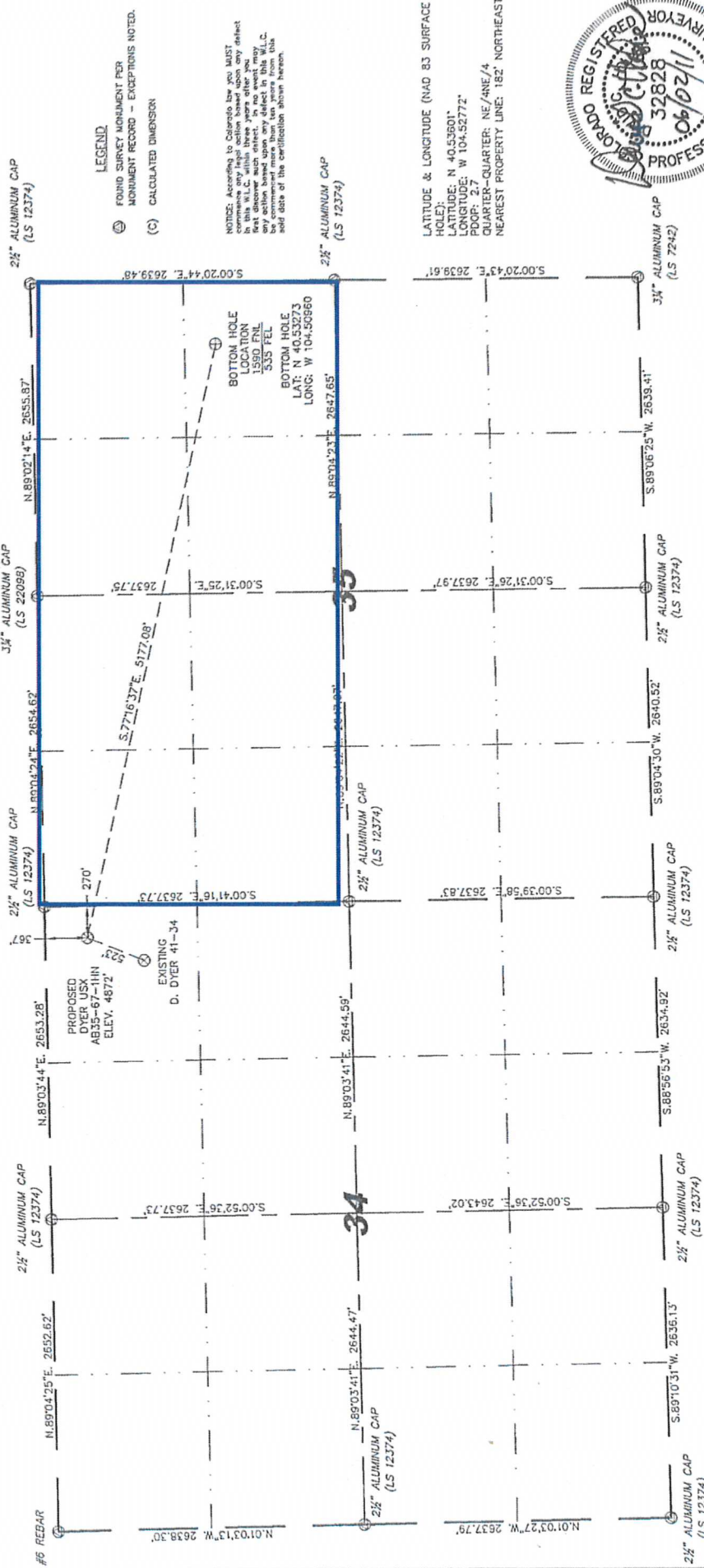
SECTIONS 34 & 35
TOWNSHIP 7 NORTH
RANGE 64 WEST

Cheyenne, Wyoming 82001

1102 West 19th Street P.O. BOX 2073

Stell Surveying Services, LLC

WELL LOCATION CERTIFICATE
THIS MAP DOES NOT REPRESENT A BOUNDARY SURVEY



- NOTES:
- 1) BASIS OF BEARINGS FOR THIS MAP ARE BASED UPON GPS OBSERVATIONS MADE ON 05/17/2011 BETWEEN MONUMENTS LOCATED AT THE SOUTHEAST CORNER AND THE NORTHEAST CORNER OF SAID SECTION AND WITH THE MONUMENTS LOCATED AT THE SOUTHWEST CORNER AND THE NORTHEAST CORNER OF SAID SECTION.
 - 2) ELEVATIONS ARE BASED UPON NGS OPUS SOLUTION NAD 83 DATUM.
 - 3) THE NEAREST EXISTING WELL IS: D. DYER 41-34, 523' SOUTHWEST.
 - 4) SEE LOCATION DRAWING FOR ALL IMPROVEMENTS WITHIN VISIBLE IMPROVEMENT LIMITS.
 - 5) THE LOCATION FALLS IN CROP LAND.
 - 6) THE LOCATION FALLS IN CROP LAND.

IN ACCORDANCE WITH A REQUEST FROM HATE MCCORMICK - NOBLE ENERGY INC., STELL SURVEYING SERVICES, LLC HAS DETERMINED THE LOCATION OF THE DYER USX AB35-67-11H WELL TO BE 367' FNL, 270' FEL, AS MEASURED AT NINETEEN (90) DEGREES FROM THE SECTION LINES, SECTION 34, TOWNSHIP 7 NORTH, RANGE 64 WEST, 6TH PRINCIPAL MERIDIAN, HELL COUNTY, COLORADO.

I HEREBY CERTIFY THAT THIS WELL LOCATION CERTIFICATE WAS PREPARED BY ME, OR UNDER MY DIRECT SUPERVISION, THAT THE LOCATION OF THE WELL IS NOT A LAND SURVEY PLAT OR AN IMPROVEMENT SURVEY PLAT, AND THAT IT IS NOT TO BE REPLIED UPON FOR ESTABLISHMENT OF FENCE, BUILDING, OR OTHER FUTURE IMPROVEMENT LINES.



Scale: 1" = 1000'



David C. Holmes
Professional Land Surveyor
State of Colorado
JOB # 11086
Completed 6/30/2011

LATITUDE & LONGITUDE (NAD 83 SURFACE HOLE):
LATITUDE: N 40.53601°
LONGITUDE: W 104.52772°
PDOP: 2.7
QUARTER-QUARTER: NE/4NE/4
NEAREST PROPERTY LINE: 182' NORTHEAST