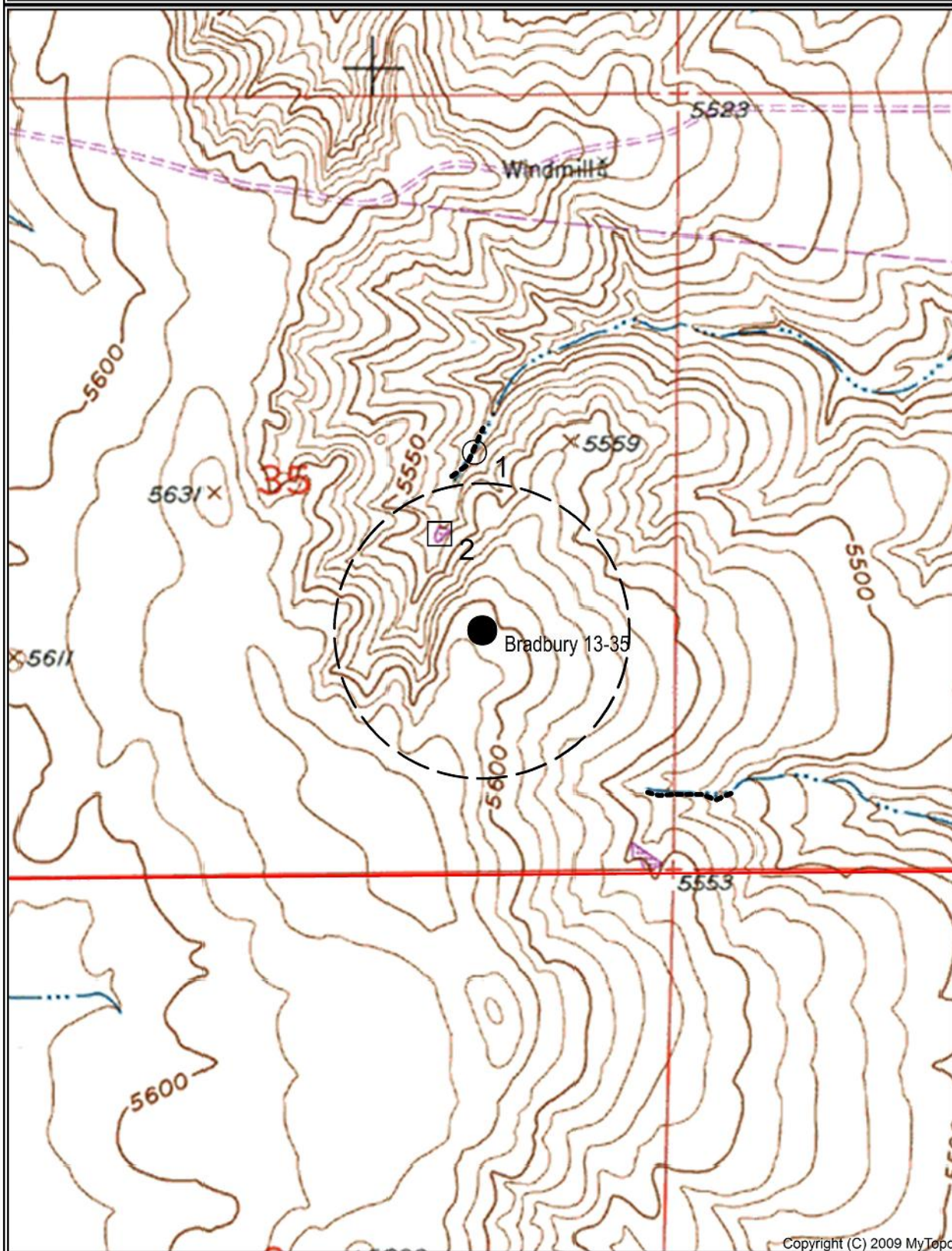


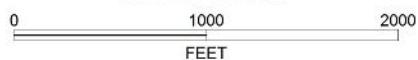
# Hydrology Map - Bradbury 13-35



- 1 - Intermittent Stream +/- 1034 ft. NW
- 2 - Intermittent Pond +/- 678 ft. NW
- Proposed Well
- - - 1000' Radius



SCALE 1:12000



Overland Resources LLC, Bradbury 13-35  
NE/4 SE/4 SEC 35 T4S R62W  
39.656227N / 104.289615W