

Schlumberger

CEMENT BOND LOG
VARIABLE DENSITY

COUNTY GARFIELD
Field or LOCATION WILDCAT
WELL GARFIELD TWO FEDERAL
26-3
COMPANY TETON ENERGY CO.

COMPANY TETON ENERGY COMPANY INC.
WELL GARFIELD TWO FEDERAL 26-3
FIELD WILDCAT
COUNTY GARFIELD STATE COLORADO
LOCATION N API Serial No. NUSC 12
APPROX. W/2 SW Rge. 91W
Sec. 26 Twp. 7S
Other Services: NONE

Termament Datum: GL Elev. 7900
Log Measured From: KB 13 ft. Above Perm. Datum
Drilling Measured From: KB

Date 6/21/80
Run No. ONE
Depth - Driller 7432
Depth - Logger 7285
Ann. Log Interval 7275
Top Log Interval 5520
Casing Hole Size 7 7/8
Casing REC. Size 13 3/8 Wt/Ft Grade Type Joint
Surface String 13 3/8 SURF. 450
Burr String 15.5 K55 SURF. TD
Prod. String 15.5 K55 SURF. TD
Liner

PRIMARY CEMENTING DATA

Surface Protection Production Liner
RECEIVED
JUL 8 1980
CCL OUT & GAS CENS. POWER

The well name, location and borehole reference data were furnished by the customer.

PRIMARY CEMENTING DATA

☐ Actual ☐ Estimated Hour-Date

Started pumping cement

Release pressure

Start Cement Bond Log

Finish Cement Bond Log

Preceding fluid Volume bbls.
Cement pumped bbls./minute

REMARKS: NONE

Service Order Number

Casing Collar Memory Distance 25 ft.

Radiation Log Memory Distance 20 ft.

Pipe reciprocated during Pumping: Yes No
Pipe reciprocated after plug down: Yes min, No



02055324

SQUEEZE JOB DETAIL

Squeeze number 1 2
Date
Ann. Log Interval
Type cement
Volume of cement
Additive
Order
Weight of slurry
Preceding fluid
Breakdown pressure
Max. pressure-stage 1
" " " 2
" " " 3
Final maximum pressure
Started pumping cement
Released pressure
Start CBL
Finish CBL
AVERAGE WELL DRIFT:
" from to " from to

DOWNHOLE EQUIPMENT

25
1'
21.5
T
R
R
O.D. 3 3/8

CCL R 1228
SGT JC 2079
NLT
CNT
CCL
CME
SLC FA 687
CME GEMCO
CME
SLS RA 2177
CME GEMCO

SURFACE EQUIPMENT

	TYPE	MOD.	S.N.
Sonic Panel			533
Memorizer	TLP		599
GNP CNP			157
CRP	BR		181
OWE			
CRP Intensity		5	
R9G Intensity		7	
Logging Speed		60/MIN.	
Time Constant		1	
Sweep Time μ -sec		1000	
Amplitude mv/cm		10	
Casing Centralizer Pattern			
/Joint from		to	
/Joint from		to	
/Joint from		to	
Casing Scratcher Pattern			
/Joint from		to	
/Joint from		to	
/Joint from		to	

All interpretations are opinions based on inferences from electrical or other measurements and we cannot, and do not guarantee the accuracy or correctness of any interpretations, and we shall not, except in the case of gross or willful negligence on our part, be liable or responsible for any loss, costs, damages or expenses incurred or sustained by anyone resulting from any interpretation made by any of our officers, agents or employees. These interpretations are also subject to Clause 4 of our General Terms and Conditions as set out in our current Price Schedule.

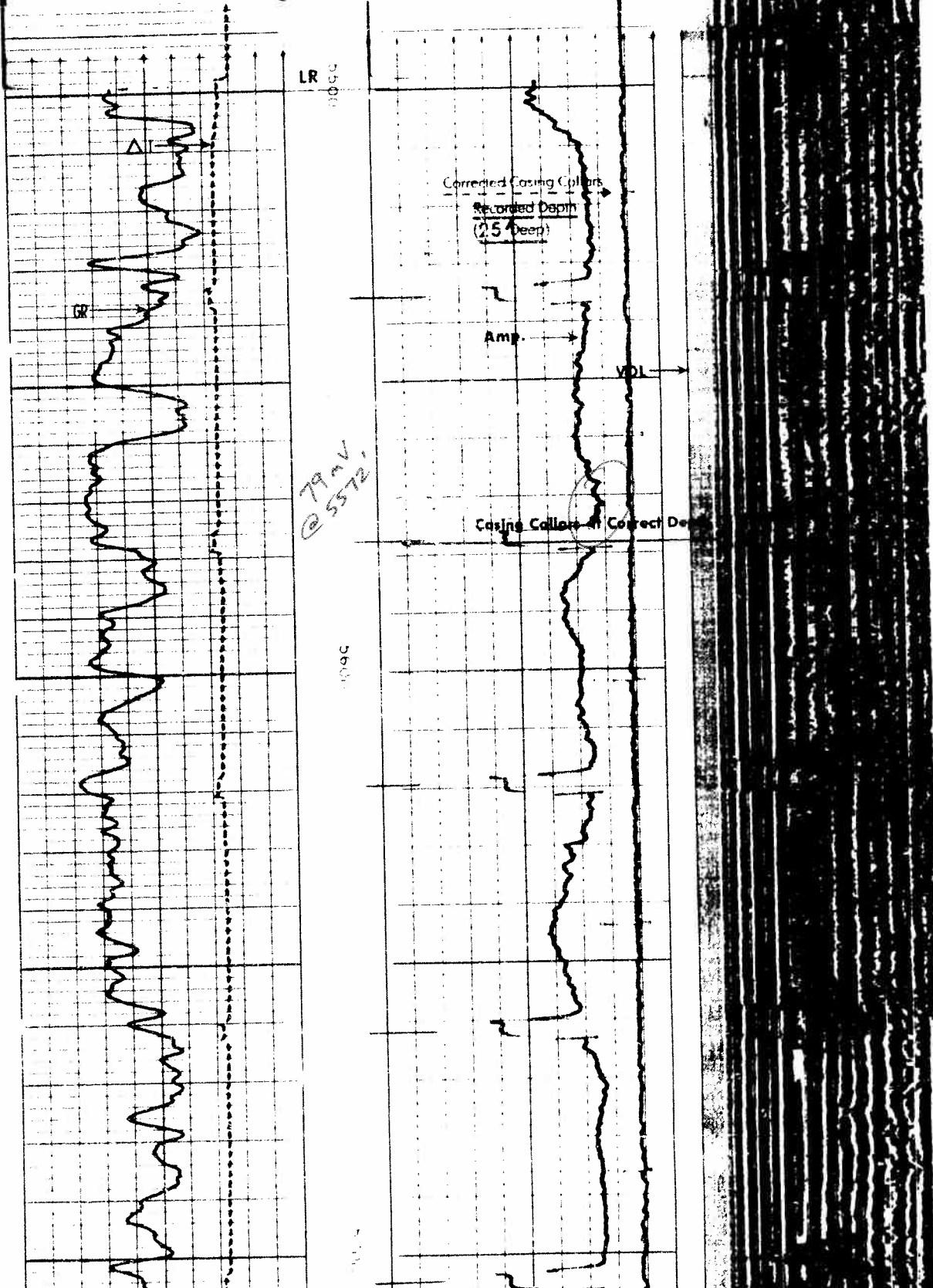
TRANSIT TIME

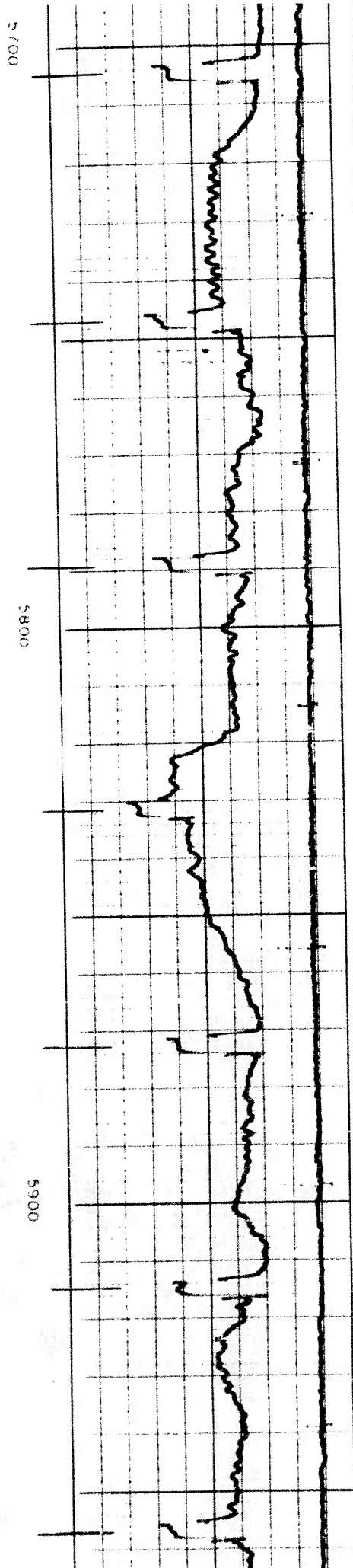
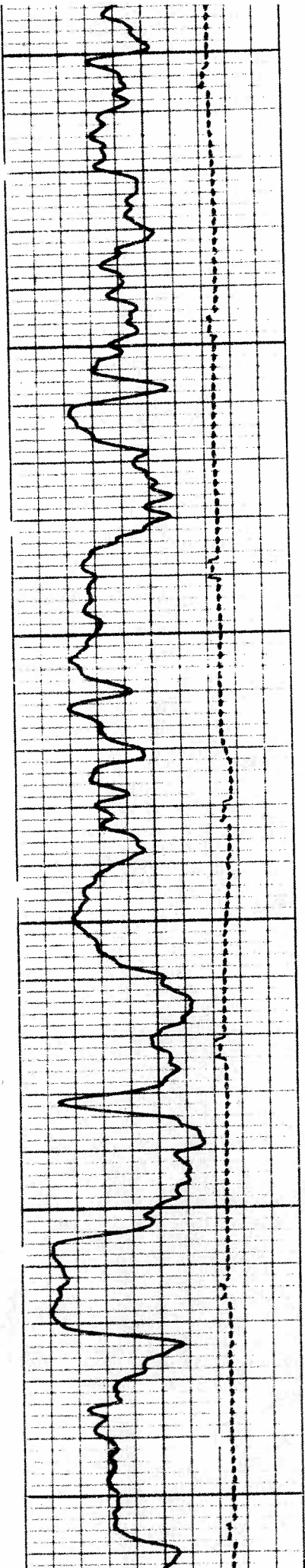
DEI

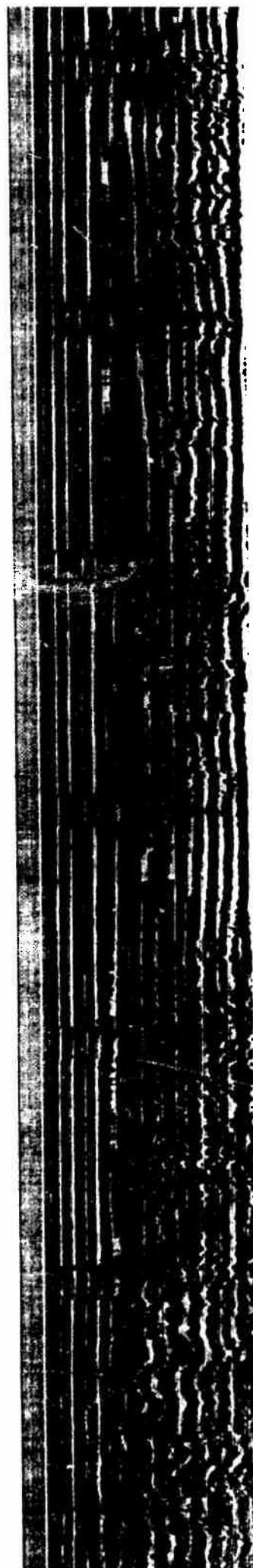
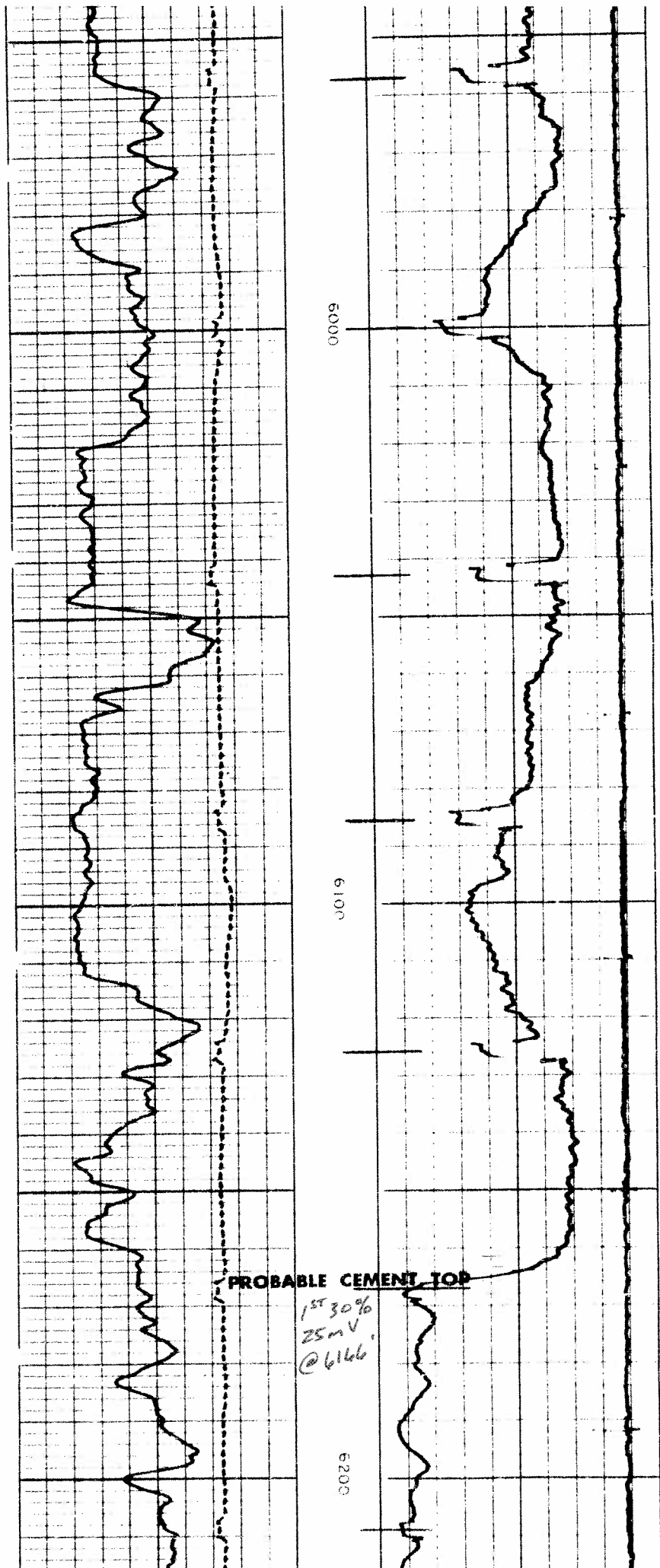
CASING BOND

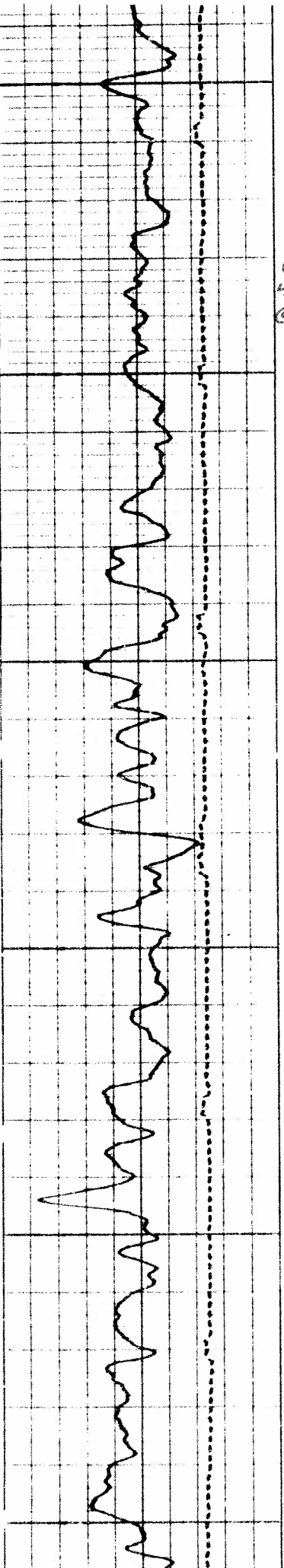
VARIABLE DENSITY

TRANSIT TIME MICROSECONDS <u>31</u> SPACING <u>200</u> 400 200		DEPTH 0 0 Casing Collars Corrected Depth	CASING BOND MILLIVOLTS 0 100	VARIABLE DENSITY MICROSECONDS <u>51</u> SPACING <u>12</u> 20 12
GAMMA RAY API UNITS <u>150</u> <u>300</u>				





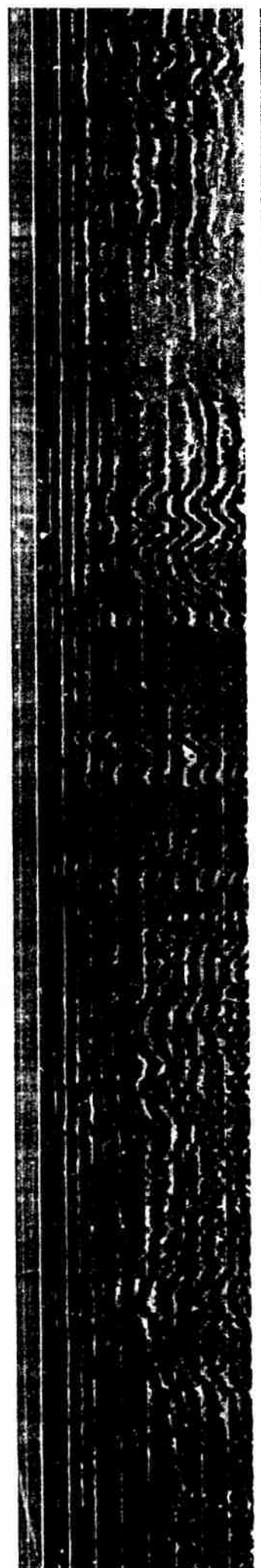
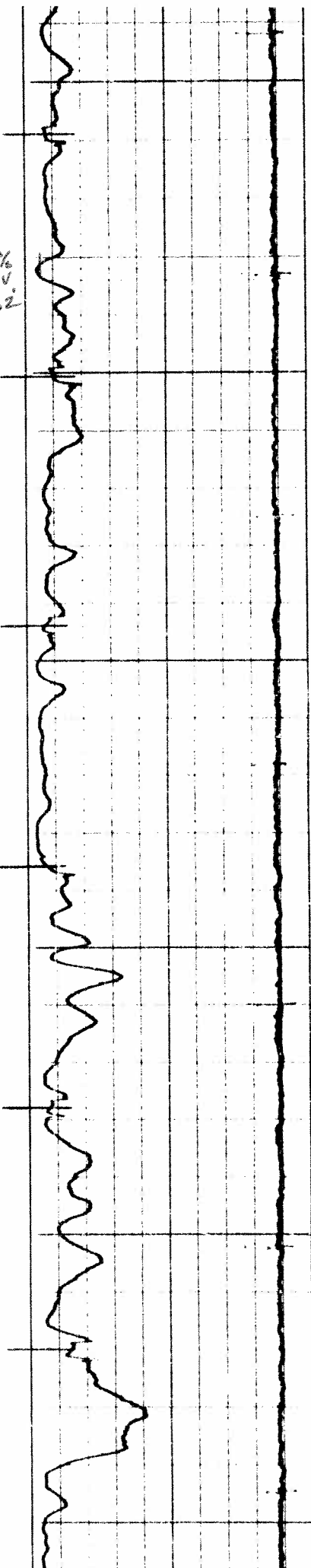


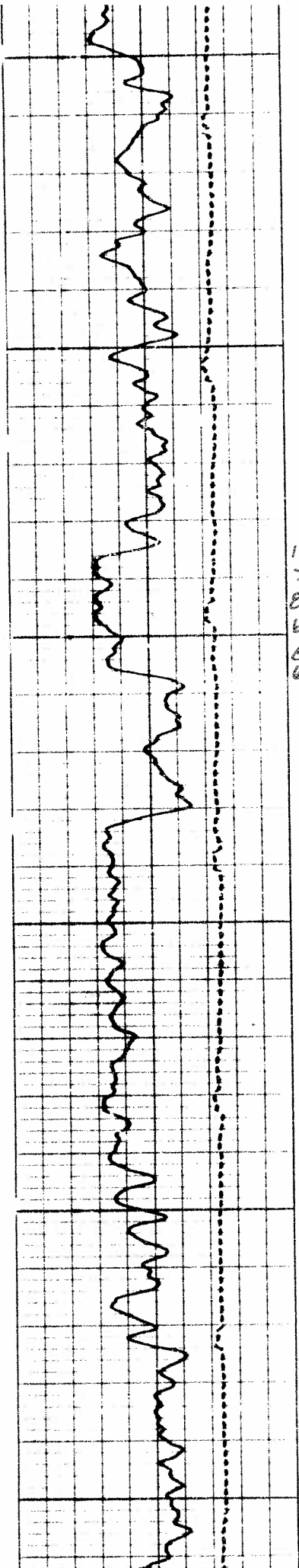


1ST 80%
4.2 mV
@ 6232

6300

6400



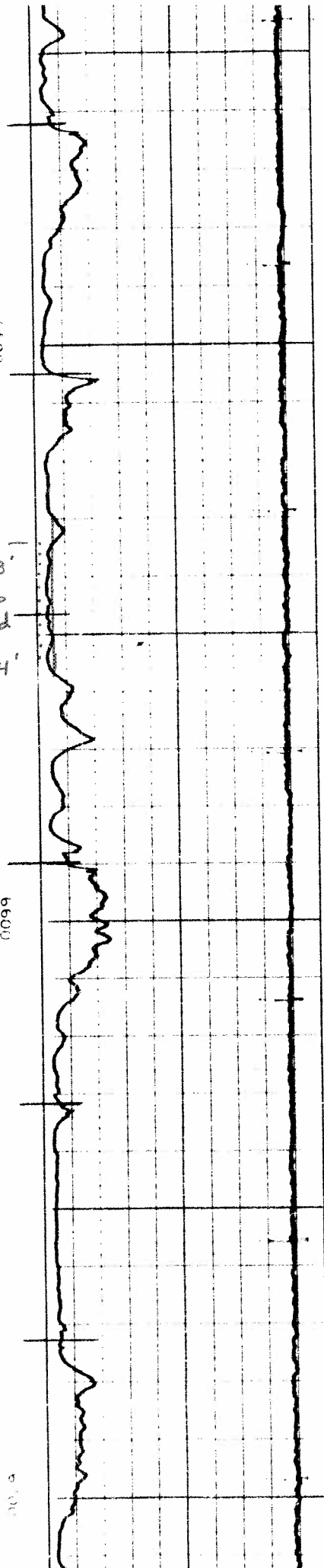


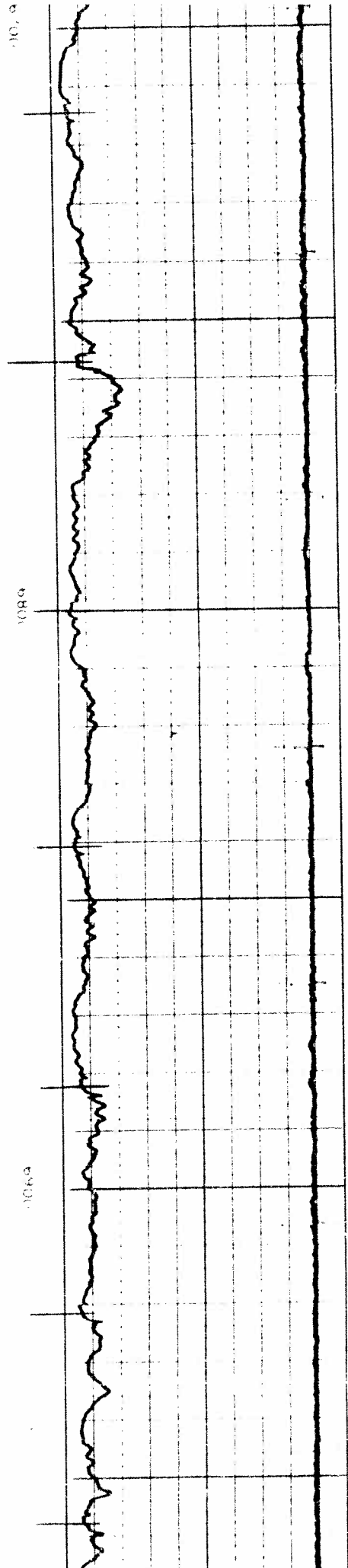
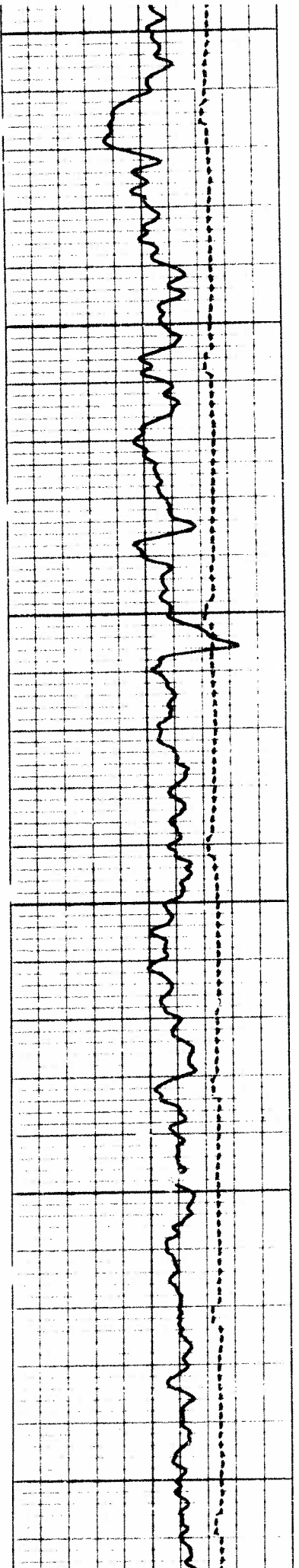
1st
> 18"
80%
bond
@
6534'

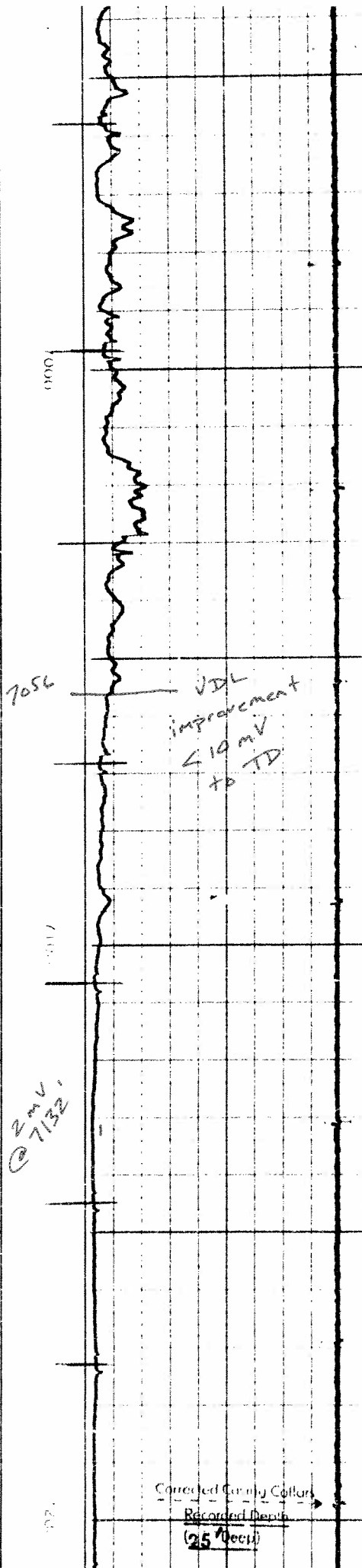
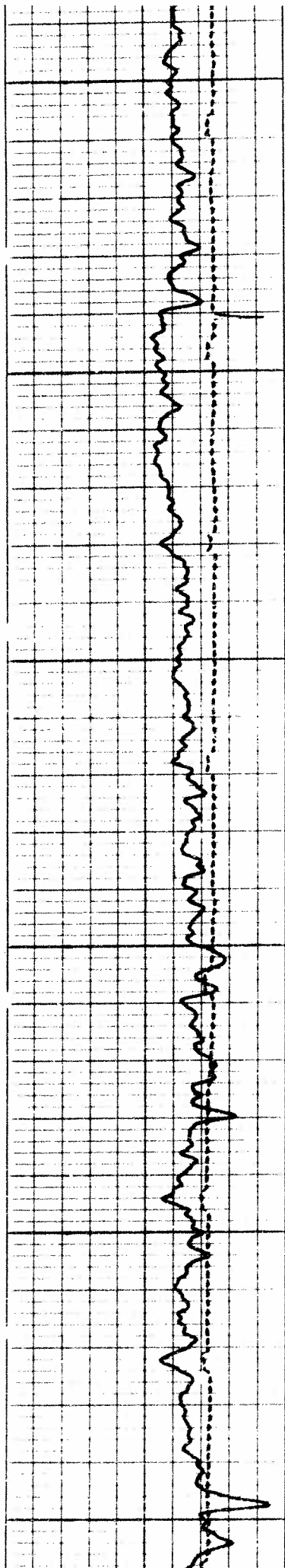
0059

0099

0000







Corrected Caring Collar
Recorded Depub
(25 Dec 11)