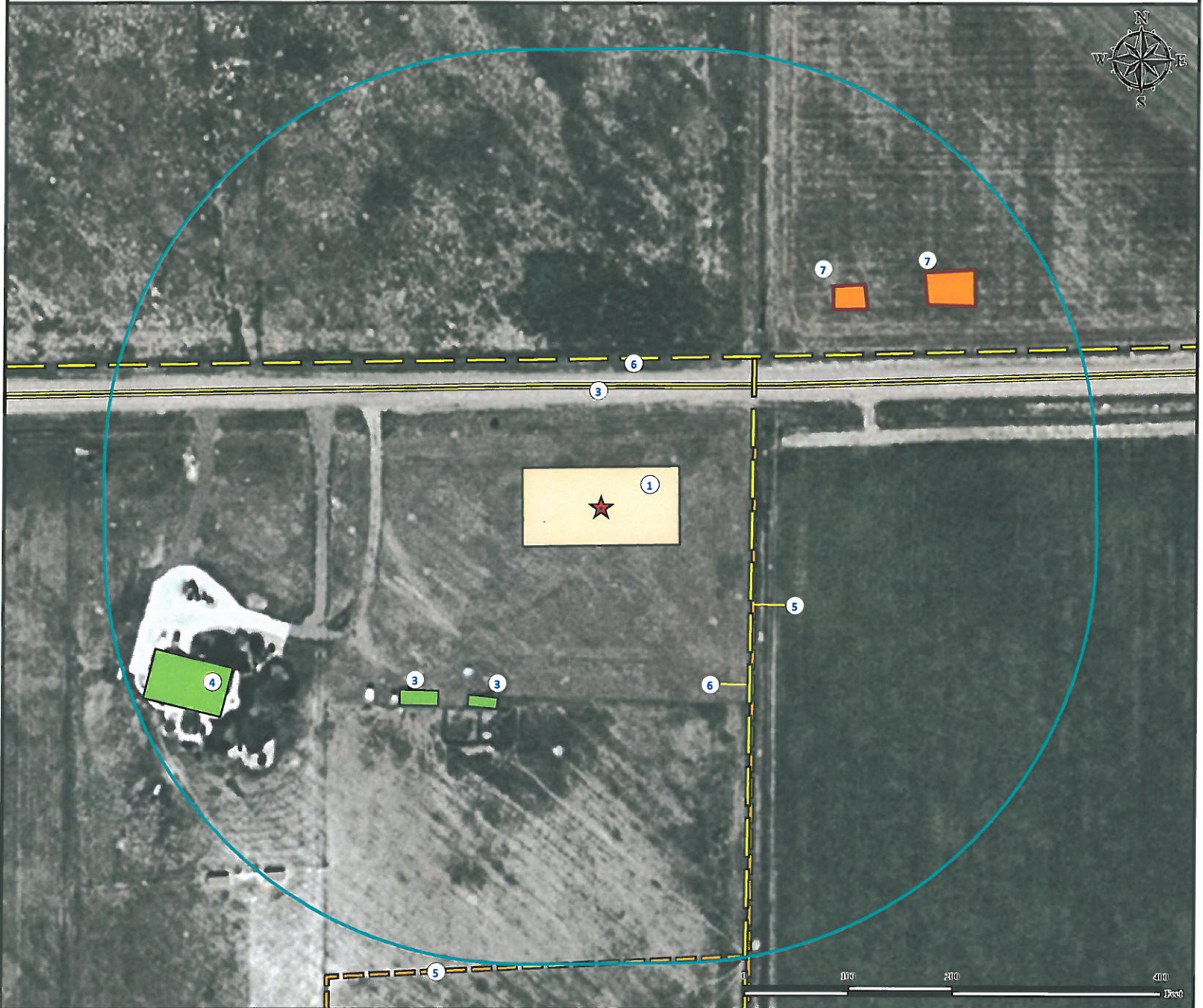


# Location Drawing

## WALTON 17-25 FACILITY

NE¼ NE¼ SECTION 25, TOWNSHIP 7 NORTH, RANGE 67 WEST OF THE 6TH PRINCIPAL MERIDIAN



- |  |  |  |
|--|--|--|
| 1. Proposed WALTON 17-25 FACILITY.         | 4. Residence is ±384' SW.              | 7. Facilities are ±290' NE and ±366' NE. |
| 2. County Road 78 is ±115' N.              | 5. Fences are ±146' E and ±440' SE.    |  |
| 3. Outbuildings are ±220' SW and ±235' SW. | 6. Powerlines are ±144' E and ±141' N. |  |

### Legend

- |                      |                  |            |                    |
|----------------------|------------------|------------|--------------------|
| Proposed Facility    | Disturbance Area | Fence      | Building/Residence |
| Facilities Enclosure | 400' Radius      | Power Line | Public Road        |

### Reference Location

\*\* All Measurements are Made from Reference Point \*\*  
 Lat: 40.552190° Long:-104.832496° (NAD83)  
 Elevation: 4987 Feet

113' FNL 149' FEL

**Use our resources to find yours!**  
[www.petro-fs.com](http://www.petro-fs.com)  
 (303) 928-7128

Field Date: 09/27/2011  
 Drafting Date: 11/01/2011  
 Drafter: DMM  
 Checked By: BHF

Data Sources:  
 - Aerial courtesy of NAIP (2009)  
 Surface Use: Rangeland

Prepared for:  
**BAYSWATER**  
 EXPLORATION AND PRODUCTION, LLC