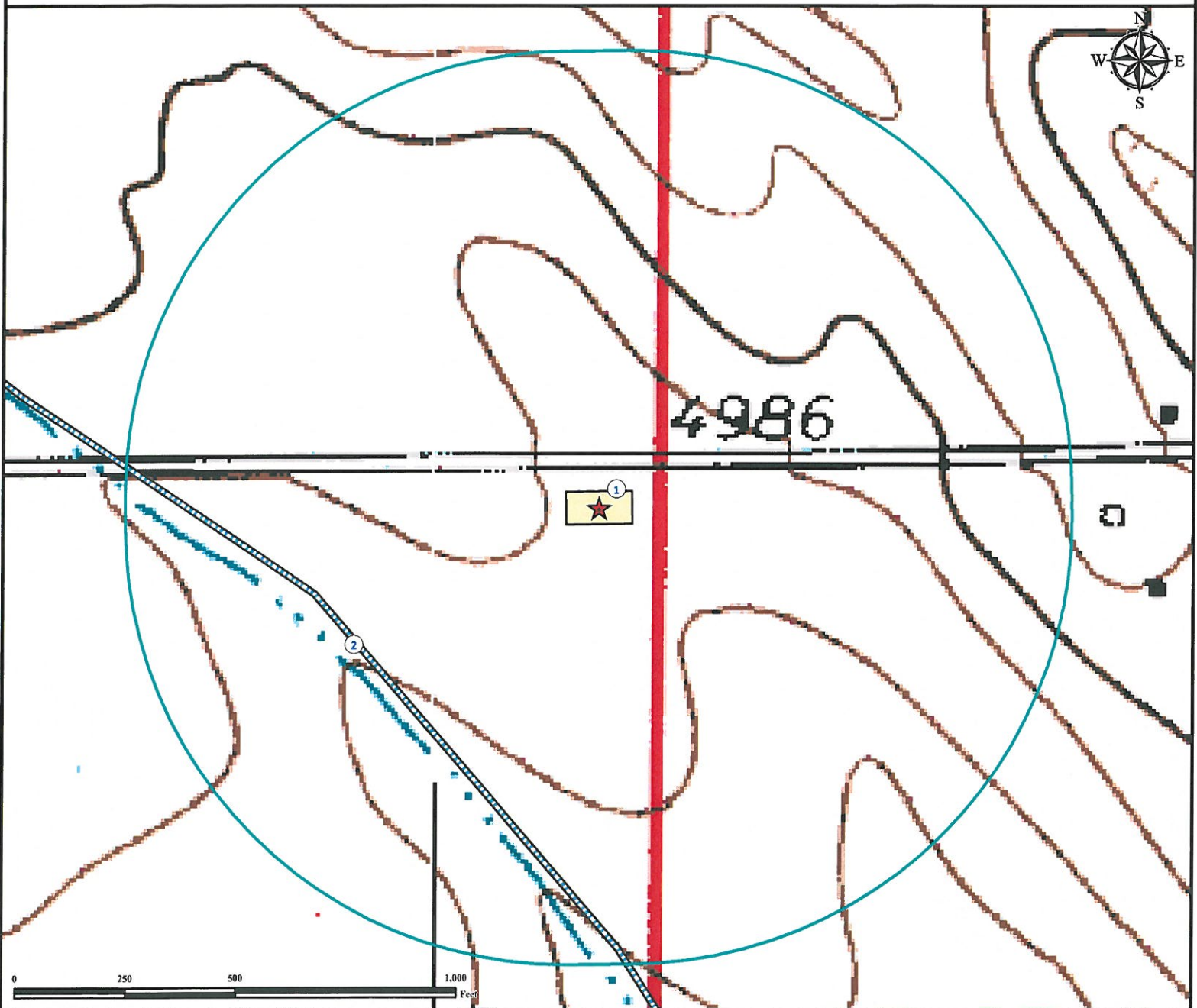


Hydrology Map

WALTON 17-25 FACILITY

NE¼ NE¼ SECTION 25, TOWNSHIP 7 NORTH, RANGE 67 WEST OF THE 6TH PRINCIPAL MERIDIAN



1. Proposed WALTON 17-25 FACILITY.

2. Intermittent Stream is $\pm 621'$ SW.

Legend

- Proposed Facility
- Intermittent Stream
- 1000' Radius

Reference Location

** All Measurements are Made from
Reference Point ★ **
Lat: 40.552190° Long: -104.832496° (NAD83)
Elevation: 4987 Feet

113' FNL 149' FEL



Use our resources to find yours!
www.petro-fs.com
(303) 928-7128

Field Date: 09/27/2011
Drafting Date: 11/01/2011
Drafter: DMM
Checked By: BHF

Data Sources:
TOPO courtesy USGS
Intermittent Stream data courtesy NDIS

Prepared for:

