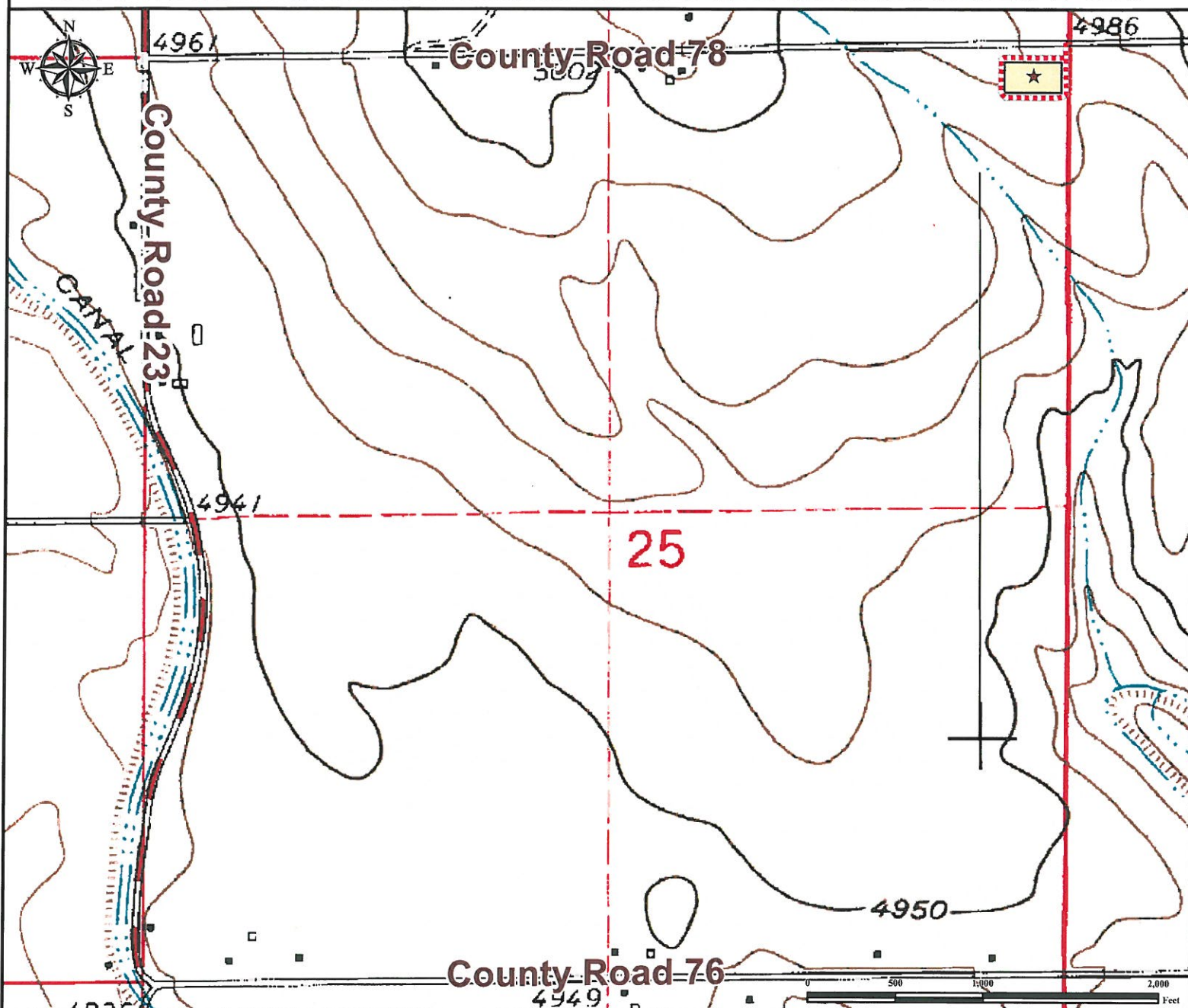


Access Road Map

WALTON 17-25 FACILITY

NE¼ NE¼ SECTION 25, TOWNSHIP 7 NORTH, RANGE 67 WEST OF THE 6TH PRINCIPAL MERIDIAN



From Severance, CO: From the intersection of County Road 74 and County Road 23, head North ± 2.0 miles.

Turn Right onto WCR 78 and continue north ± 1.0 miles.

Turn Right onto proposed access road and drive south for ± 0.1 miles to proposed facility.

Total distance from Severance, CO to proposed well location is ± 3.1 miles to proposed facility.


*** Size of Facility has been exaggerated to be clearly visible at this scale ***

Legend

 Proposed Facility  Proposed Access Road

Reference Location

** All Measurements are Made from

Reference Point  **

Lat: 40.552190° Long: -104.832496° (NAD83)

Elevation: 4987 Feet

113' FNL 149' FEL



Use our resources to find yours!

www.petro-fs.com

(303) 928-7128

Field Date: 09/27/2011
Drafting Date: 11/01/2011
Drafter: DMM
Checked By: BHF

Data Sources:
- TOPO courtesy of USGS

Prepared for:



BAYSWATER
EXPLORATION AND PRODUCTION, LLC