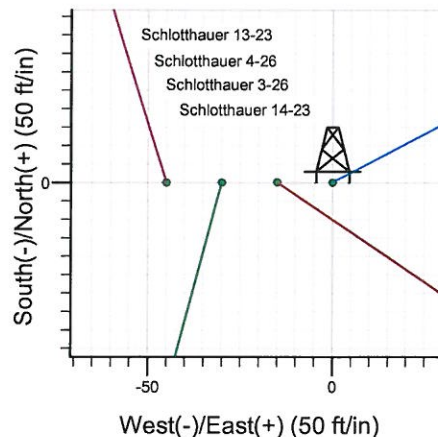
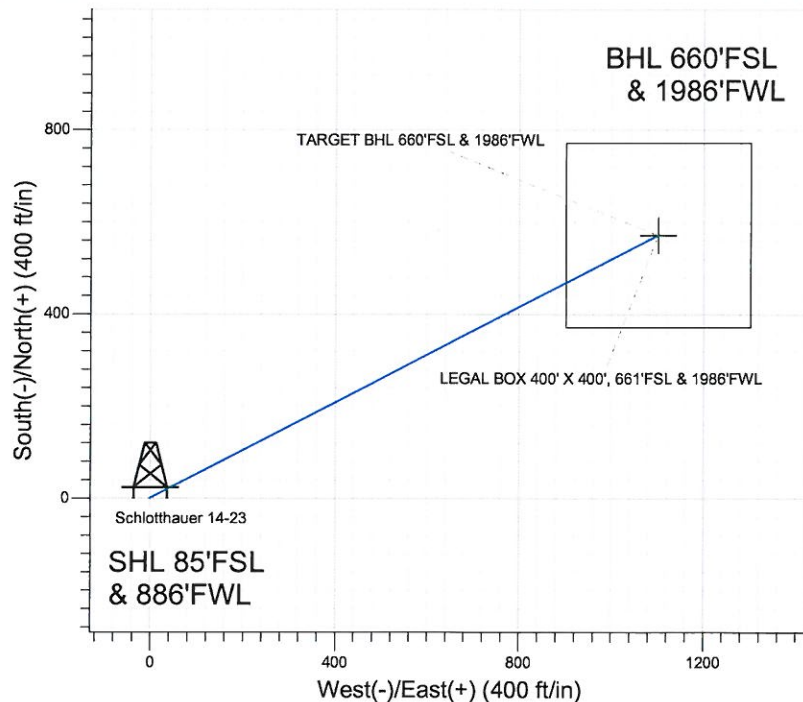
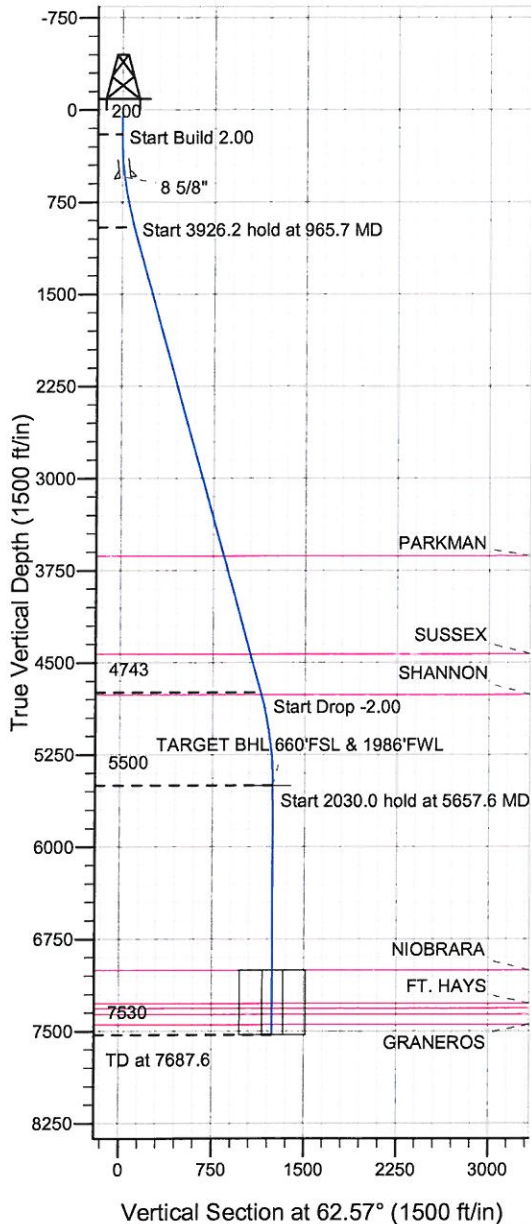


ENSIGN Directional

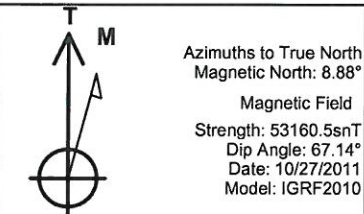
Well Name: Schlotthauer 14-23

Surface Location: Schlotthauer 13-23 Pad Sec.23-T7N-R67W
 North American Datum 1983 , US State Plane 1983 Colorado Northern Zone
 Ground Elevation: 4966.0
 +N/-S +E/-W Northing Easting Latitude Longitude Slot
 0.0 0.0 1444798.14 3175970.29 40.552646 -104.866742
 Original Well EleWELL @ 4977.0ft (Original Well Elev)

BAYSWATER EXPLORATION & PRODUCTION



Schlotthauer 13-23 Pad Sec.23-T7N-R67W
 Schlotthauer 14-23
 Plan #1 (10-27-11)
 11:26, October 28 2011



WELLBORE TARGET DETAILS (LAT/LONG)

Name	TVD	+N/-S	+E/-W	Latitude	Longitude	Shape
TARGET BHL 660'FSL & 1986'FWL	5500.0	571.3	1101.0	40.554214	-104.862780	Point
LEGAL BOX 400' X 400', 661'FSL & 1986'FWL	7002.0	572.3	1101.0	40.554217	-104.862780	Rectangle (Sides: L400.0 W400.0)

SECTION DETAILS

Sec	MD	Inc	Azi	TVD	+N/-S	+E/-W	DLeg	TFace	VSec	Target
1	0.0	0.00	0.00	0.0	0.0	0.0	0.00	0.00	0.0	
2	200.0	0.00	0.00	200.0	0.0	0.0	0.00	0.00	0.0	
3	965.7	15.31	62.57	956.6	46.9	90.3	2.00	62.57	101.7	
4	4891.9	15.31	62.57	4743.4	524.5	1010.7	0.00	0.00	1138.7	
5	5657.6	0.00	0.00	5500.0	571.3	1101.0	2.00	180.00	1240.4	TARGET BHL 660'FSL & 1986'FWL
6	7687.6	0.00	0.00	7530.0	571.3	1101.0	0.00	0.00	1240.4	



Directional

BAYSWATER EXPLORATION & PRODUCTION

SEC.23-T7N-R67W

Schlotthauer 13-23 Pad Sec.23-T7N-R67W

Schlotthauer 14-23

Wellbore #1

Plan: Plan #1 (10-27-11)

Standard Planning Report

28 October, 2011

Database:	Landmark	Local Co-ordinate Reference:	Well Schlotthauer 14-23
Company:	BAYSWATER EXPLORATION & PRODUCTION	TVD Reference:	WELL @ 4977.0ft (Original Well Elev)
Project:	SEC.23-T7N-R67W	MD Reference:	WELL @ 4977.0ft (Original Well Elev)
Site:	Schlotthauer 13-23 Pad Sec.23-T7N-R67W	North Reference:	True
Well:	Schlotthauer 14-23	Survey Calculation Method:	Minimum Curvature
Wellbore:	Wellbore #1		
Design:	Plan #1 (10-27-11)		

Project	SEC.23-T7N-R67W, Weld County, CO		
Map System:	US State Plane 1983	System Datum:	Mean Sea Level
Geo Datum:	North American Datum 1983		Using Well Reference Point
Map Zone:	Colorado Northern Zone		Using geodetic scale factor

Site	Schlotthauer 13-23 Pad Sec.23-T7N-R67W				
Site Position:		Northing:	1,444,798.08ft	Latitude:	40.552646
From:	Lat/Long	Easting:	3,175,955.28ft	Longitude:	-104.866796
Position Uncertainty:	0.0 ft	Slot Radius:	"	Grid Convergence:	0.41 °

Well	Schlotthauer 14-23					
Well Position	+N/-S	0.0 ft	Northing:	1,444,798.14 ft	Latitude:	40.552646
	+E/-W	15.0 ft	Easting:	3,175,970.29 ft	Longitude:	-104.866742
Position Uncertainty		0.0 ft	Wellhead Elevation:	ft	Ground Level:	4,966.0 ft

Wellbore	Wellbore #1				
Magnetics	Model Name	Sample Date	Declination (°)	Dip Angle (°)	Field Strength (nT)
	IGRF2010	10/27/2011	8.88	67.14	53,160

Design	Plan #1 (10-27-11)			
---------------	--------------------	--	--	--

Audit Notes:				
Version:	Phase:	PROTOTYPE	Tie On Depth:	0.0

Vertical Section:	Depth From (TVD)	+N/-S (ft)	+E/-W (ft)	Direction (°)
	0.0	0.0	0.0	62.57

Plan Sections										
Measured Depth (ft)	Inclination (°)	Azimuth (°)	Vertical Depth (ft)	+N/-S (ft)	+E/-W (ft)	Dogleg Rate (°/100ft)	Build Rate (°/100ft)	Turn Rate (°/100ft)	TFO (°)	Target
0.0	0.00	0.00	0.0	0.0	0.0	0.00	0.00	0.00	0.00	
200.0	0.00	0.00	200.0	0.0	0.0	0.00	0.00	0.00	0.00	
965.7	15.31	62.57	956.6	46.9	90.3	2.00	2.00	0.00	62.57	
4,891.9	15.31	62.57	4,743.4	524.5	1,010.7	0.00	0.00	0.00	0.00	
5,657.6	0.00	0.00	5,500.0	571.3	1,101.0	2.00	-2.00	0.00	180.00	TARGET BHL 660'I
7,687.6	0.00	0.00	7,530.0	571.3	1,101.0	0.00	0.00	0.00	0.00	

Database: Landmark
Company: BAYSWATER EXPLORATION & PRODUCTION
Project: SEC.23-T7N-R67W
Site: Schlotthauer 13-23 Pad Sec.23-T7N-R67W
Well: Schlotthauer 14-23
Wellbore: Wellbore #1
Design: Plan #1 (10-27-11)

Local Co-ordinate Reference: Well Schlotthauer 14-23
TVD Reference: WELL @ 4977.0ft (Original Well Elev)
MD Reference: WELL @ 4977.0ft (Original Well Elev)
North Reference: True
Survey Calculation Method: Minimum Curvature

Planned Survey

Measured Depth (ft)	Inclination (°)	Azimuth (°)	Vertical Depth (ft)	+N/-S (ft)	+E/-W (ft)	Vertical Section (ft)	Dogleg Rate (°/100ft)	Build Rate (°/100ft)	Turn Rate (°/100ft)
0.0	0.00	0.00	0.0	0.0	0.0	0.0	0.00	0.00	0.00
40.0	0.00	0.00	40.0	0.0	0.0	0.0	0.00	0.00	0.00
80.0	0.00	0.00	80.0	0.0	0.0	0.0	0.00	0.00	0.00
120.0	0.00	0.00	120.0	0.0	0.0	0.0	0.00	0.00	0.00
160.0	0.00	0.00	160.0	0.0	0.0	0.0	0.00	0.00	0.00
200.0	0.00	0.00	200.0	0.0	0.0	0.0	0.00	0.00	0.00
240.0	0.80	62.57	240.0	0.1	0.2	0.3	2.00	2.00	0.00
280.0	1.60	62.57	280.0	0.5	1.0	1.1	2.00	2.00	0.00
320.0	2.40	62.57	320.0	1.2	2.2	2.5	2.00	2.00	0.00
360.0	3.20	62.57	359.9	2.1	4.0	4.5	2.00	2.00	0.00
400.0	4.00	62.57	399.8	3.2	6.2	7.0	2.00	2.00	0.00
440.0	4.80	62.57	439.7	4.6	8.9	10.0	2.00	2.00	0.00
480.0	5.60	62.57	479.6	6.3	12.1	13.7	2.00	2.00	0.00
520.0	6.40	62.57	519.3	8.2	15.8	17.9	2.00	2.00	0.00
550.9	7.02	62.57	550.0	9.9	19.0	21.5	2.00	2.00	0.00
8 5/8"									
560.0	7.20	62.57	559.1	10.4	20.1	22.6	2.00	2.00	0.00
600.0	8.00	62.57	598.7	12.8	24.7	27.9	2.00	2.00	0.00
640.0	8.80	62.57	638.3	15.5	29.9	33.7	2.00	2.00	0.00
680.0	9.60	62.57	677.8	18.5	35.6	40.1	2.00	2.00	0.00
720.0	10.40	62.57	717.1	21.7	41.8	47.1	2.00	2.00	0.00
760.0	11.20	62.57	756.4	25.1	48.4	54.6	2.00	2.00	0.00
800.0	12.00	62.57	795.6	28.8	55.6	62.6	2.00	2.00	0.00
840.0	12.80	62.57	834.7	32.8	63.2	71.2	2.00	2.00	0.00
880.0	13.60	62.57	873.6	37.0	71.3	80.3	2.00	2.00	0.00
920.0	14.40	62.57	912.4	41.5	79.9	90.0	2.00	2.00	0.00
960.0	15.20	62.57	951.1	46.2	89.0	100.2	2.00	2.00	0.00
965.7	15.31	62.57	956.6	46.9	90.3	101.7	2.00	2.00	0.00
1,000.0	15.31	62.57	989.7	51.0	98.3	110.8	0.00	0.00	0.00
1,040.0	15.31	62.57	1,028.3	55.9	107.7	121.3	0.00	0.00	0.00
1,080.0	15.31	62.57	1,066.9	60.8	117.1	131.9	0.00	0.00	0.00
1,120.0	15.31	62.57	1,105.4	65.6	126.5	142.5	0.00	0.00	0.00
1,160.0	15.31	62.57	1,144.0	70.5	135.8	153.0	0.00	0.00	0.00
1,200.0	15.31	62.57	1,182.6	75.4	145.2	163.6	0.00	0.00	0.00
1,240.0	15.31	62.57	1,221.2	80.2	154.6	174.2	0.00	0.00	0.00
1,280.0	15.31	62.57	1,259.8	85.1	164.0	184.7	0.00	0.00	0.00
1,320.0	15.31	62.57	1,298.3	90.0	173.3	195.3	0.00	0.00	0.00
1,360.0	15.31	62.57	1,336.9	94.8	182.7	205.9	0.00	0.00	0.00
1,400.0	15.31	62.57	1,375.5	99.7	192.1	216.4	0.00	0.00	0.00
1,440.0	15.31	62.57	1,414.1	104.6	201.5	227.0	0.00	0.00	0.00
1,480.0	15.31	62.57	1,452.7	109.4	210.9	237.6	0.00	0.00	0.00
1,520.0	15.31	62.57	1,491.2	114.3	220.2	248.1	0.00	0.00	0.00
1,560.0	15.31	62.57	1,529.8	119.1	229.6	258.7	0.00	0.00	0.00
1,600.0	15.31	62.57	1,568.4	124.0	239.0	269.2	0.00	0.00	0.00
1,640.0	15.31	62.57	1,607.0	128.9	248.4	279.8	0.00	0.00	0.00
1,680.0	15.31	62.57	1,645.6	133.7	257.7	290.4	0.00	0.00	0.00
1,720.0	15.31	62.57	1,684.1	138.6	267.1	300.9	0.00	0.00	0.00
1,760.0	15.31	62.57	1,722.7	143.5	276.5	311.5	0.00	0.00	0.00
1,800.0	15.31	62.57	1,761.3	148.3	285.9	322.1	0.00	0.00	0.00
1,840.0	15.31	62.57	1,799.9	153.2	295.2	332.6	0.00	0.00	0.00
1,880.0	15.31	62.57	1,838.5	158.1	304.6	343.2	0.00	0.00	0.00
1,920.0	15.31	62.57	1,877.0	162.9	314.0	353.8	0.00	0.00	0.00
1,960.0	15.31	62.57	1,915.6	167.8	323.4	364.3	0.00	0.00	0.00

Database:	Landmark	Local Co-ordinate Reference:	Well Schlotthauer 14-23
Company:	BAYSWATER EXPLORATION & PRODUCTION	TVD Reference:	WELL @ 4977.0ft (Original Well Elev)
Project:	SEC.23-T7N-R67W	MD Reference:	WELL @ 4977.0ft (Original Well Elev)
Site:	Schlotthauer 13-23 Pad Sec.23-T7N-R67W	North Reference:	True
Well:	Schlotthauer 14-23	Survey Calculation Method:	Minimum Curvature
Wellbore:	Wellbore #1		
Design:	Plan #1 (10-27-11)		

Planned Survey									
Measured Depth (ft)	Inclination (°)	Azimuth (°)	Vertical Depth (ft)	+N/-S (ft)	+E/-W (ft)	Vertical Section (ft)	Dogleg Rate (°/100ft)	Build Rate (°/100ft)	Turn Rate (°/100ft)
2,000.0	15.31	62.57	1,954.2	172.7	332.8	374.9	0.00	0.00	0.00
2,040.0	15.31	62.57	1,992.8	177.5	342.1	385.5	0.00	0.00	0.00
2,080.0	15.31	62.57	2,031.3	182.4	351.5	396.0	0.00	0.00	0.00
2,120.0	15.31	62.57	2,069.9	187.3	360.9	406.6	0.00	0.00	0.00
2,160.0	15.31	62.57	2,108.5	192.1	370.3	417.1	0.00	0.00	0.00
2,200.0	15.31	62.57	2,147.1	197.0	379.6	427.7	0.00	0.00	0.00
2,240.0	15.31	62.57	2,185.7	201.9	389.0	438.3	0.00	0.00	0.00
2,280.0	15.31	62.57	2,224.2	206.7	398.4	448.8	0.00	0.00	0.00
2,320.0	15.31	62.57	2,262.8	211.6	407.8	459.4	0.00	0.00	0.00
2,360.0	15.31	62.57	2,301.4	216.5	417.2	470.0	0.00	0.00	0.00
2,400.0	15.31	62.57	2,340.0	221.3	426.5	480.5	0.00	0.00	0.00
2,440.0	15.31	62.57	2,378.6	226.2	435.9	491.1	0.00	0.00	0.00
2,480.0	15.31	62.57	2,417.1	231.1	445.3	501.7	0.00	0.00	0.00
2,520.0	15.31	62.57	2,455.7	235.9	454.7	512.2	0.00	0.00	0.00
2,560.0	15.31	62.57	2,494.3	240.8	464.0	522.8	0.00	0.00	0.00
2,600.0	15.31	62.57	2,532.9	245.7	473.4	533.4	0.00	0.00	0.00
2,640.0	15.31	62.57	2,571.5	250.5	482.8	543.9	0.00	0.00	0.00
2,680.0	15.31	62.57	2,610.0	255.4	492.2	554.5	0.00	0.00	0.00
2,720.0	15.31	62.57	2,648.6	260.3	501.5	565.1	0.00	0.00	0.00
2,760.0	15.31	62.57	2,687.2	265.1	510.9	575.6	0.00	0.00	0.00
2,800.0	15.31	62.57	2,725.8	270.0	520.3	586.2	0.00	0.00	0.00
2,840.0	15.31	62.57	2,764.4	274.9	529.7	596.7	0.00	0.00	0.00
2,880.0	15.31	62.57	2,802.9	279.7	539.1	607.3	0.00	0.00	0.00
2,920.0	15.31	62.57	2,841.5	284.6	548.4	617.9	0.00	0.00	0.00
2,960.0	15.31	62.57	2,880.1	289.5	557.8	628.4	0.00	0.00	0.00
3,000.0	15.31	62.57	2,918.7	294.3	567.2	639.0	0.00	0.00	0.00
3,040.0	15.31	62.57	2,957.3	299.2	576.6	649.6	0.00	0.00	0.00
3,080.0	15.31	62.57	2,995.8	304.1	585.9	660.1	0.00	0.00	0.00
3,120.0	15.31	62.57	3,034.4	308.9	595.3	670.7	0.00	0.00	0.00
3,160.0	15.31	62.57	3,073.0	313.8	604.7	681.3	0.00	0.00	0.00
3,200.0	15.31	62.57	3,111.6	318.7	614.1	691.8	0.00	0.00	0.00
3,240.0	15.31	62.57	3,150.2	323.5	623.4	702.4	0.00	0.00	0.00
3,280.0	15.31	62.57	3,188.7	328.4	632.8	713.0	0.00	0.00	0.00
3,320.0	15.31	62.57	3,227.3	333.3	642.2	723.5	0.00	0.00	0.00
3,360.0	15.31	62.57	3,265.9	338.1	651.6	734.1	0.00	0.00	0.00
3,400.0	15.31	62.57	3,304.5	343.0	661.0	744.6	0.00	0.00	0.00
3,440.0	15.31	62.57	3,343.1	347.9	670.3	755.2	0.00	0.00	0.00
3,480.0	15.31	62.57	3,381.6	352.7	679.7	765.8	0.00	0.00	0.00
3,520.0	15.31	62.57	3,420.2	357.6	689.1	776.3	0.00	0.00	0.00
3,560.0	15.31	62.57	3,458.8	362.4	698.5	786.9	0.00	0.00	0.00
3,600.0	15.31	62.57	3,497.4	367.3	707.8	797.5	0.00	0.00	0.00
3,640.0	15.31	62.57	3,536.0	372.2	717.2	808.0	0.00	0.00	0.00
3,680.0	15.31	62.57	3,574.5	377.0	726.6	818.6	0.00	0.00	0.00
3,720.0	15.31	62.57	3,613.1	381.9	736.0	829.2	0.00	0.00	0.00
3,737.5	15.31	62.57	3,630.0	384.0	740.1	833.8	0.00	0.00	0.00
PARKMAN									
3,760.0	15.31	62.57	3,651.7	386.8	745.4	839.7	0.00	0.00	0.00
3,800.0	15.31	62.57	3,690.3	391.6	754.7	850.3	0.00	0.00	0.00
3,840.0	15.31	62.57	3,728.9	396.5	764.1	860.9	0.00	0.00	0.00
3,880.0	15.31	62.57	3,767.4	401.4	773.5	871.4	0.00	0.00	0.00
3,920.0	15.31	62.57	3,806.0	406.2	782.9	882.0	0.00	0.00	0.00
3,960.0	15.31	62.57	3,844.6	411.1	792.2	892.6	0.00	0.00	0.00
4,000.0	15.31	62.57	3,883.2	416.0	801.6	903.1	0.00	0.00	0.00

Database:	Landmark	Local Co-ordinate Reference:	Well Schlotthauer 14-23
Company:	BAYSWATER EXPLORATION & PRODUCTION	TVD Reference:	WELL @ 4977.0ft (Original Well Elev)
Project:	SEC.23-T7N-R67W	MD Reference:	WELL @ 4977.0ft (Original Well Elev)
Site:	Schlotthauer 13-23 Pad Sec.23-T7N-R67W	North Reference:	True
Well:	Schlotthauer 14-23	Survey Calculation Method:	Minimum Curvature
Wellbore:	Wellbore #1		
Design:	Plan #1 (10-27-11)		

Planned Survey

Measured Depth (ft)	Inclination (°)	Azimuth (°)	Vertical Depth (ft)	+N/-S (ft)	+E/-W (ft)	Vertical Section (ft)	Dogleg Rate (°/100ft)	Build Rate (°/100ft)	Turn Rate (°/100ft)
4,040.0	15.31	62.57	3,921.8	420.8	811.0	913.7	0.00	0.00	0.00
4,080.0	15.31	62.57	3,960.3	425.7	820.4	924.2	0.00	0.00	0.00
4,120.0	15.31	62.57	3,998.9	430.6	829.7	934.8	0.00	0.00	0.00
4,160.0	15.31	62.57	4,037.5	435.4	839.1	945.4	0.00	0.00	0.00
4,200.0	15.31	62.57	4,076.1	440.3	848.5	955.9	0.00	0.00	0.00
4,240.0	15.31	62.57	4,114.7	445.2	857.9	966.5	0.00	0.00	0.00
4,280.0	15.31	62.57	4,153.2	450.0	867.3	977.1	0.00	0.00	0.00
4,320.0	15.31	62.57	4,191.8	454.9	876.6	987.6	0.00	0.00	0.00
4,360.0	15.31	62.57	4,230.4	459.8	886.0	998.2	0.00	0.00	0.00
4,400.0	15.31	62.57	4,269.0	464.6	895.4	1,008.8	0.00	0.00	0.00
4,440.0	15.31	62.57	4,307.6	469.5	904.8	1,019.3	0.00	0.00	0.00
4,480.0	15.31	62.57	4,346.1	474.4	914.1	1,029.9	0.00	0.00	0.00
4,520.0	15.31	62.57	4,384.7	479.2	923.5	1,040.5	0.00	0.00	0.00
4,560.0	15.31	62.57	4,423.3	484.1	932.9	1,051.0	0.00	0.00	0.00
4,567.0	15.31	62.57	4,430.0	484.9	934.5	1,052.9	0.00	0.00	0.00
SUSSEX									
4,600.0	15.31	62.57	4,461.9	489.0	942.3	1,061.6	0.00	0.00	0.00
4,640.0	15.31	62.57	4,500.4	493.8	951.6	1,072.1	0.00	0.00	0.00
4,680.0	15.31	62.57	4,539.0	498.7	961.0	1,082.7	0.00	0.00	0.00
4,720.0	15.31	62.57	4,577.6	503.6	970.4	1,093.3	0.00	0.00	0.00
4,760.0	15.31	62.57	4,616.2	508.4	979.8	1,103.8	0.00	0.00	0.00
4,800.0	15.31	62.57	4,654.8	513.3	989.2	1,114.4	0.00	0.00	0.00
4,840.0	15.31	62.57	4,693.3	518.2	998.5	1,125.0	0.00	0.00	0.00
4,880.0	15.31	62.57	4,731.9	523.0	1,007.9	1,135.5	0.00	0.00	0.00
4,891.9	15.31	62.57	4,743.4	524.5	1,010.7	1,138.7	0.00	0.00	0.00
4,909.1	14.97	62.57	4,760.0	526.5	1,014.7	1,143.2	2.00	-2.00	0.00
SHANNON									
4,920.0	14.75	62.57	4,770.5	527.8	1,017.2	1,146.0	2.00	-2.00	0.00
4,960.0	13.95	62.57	4,809.3	532.4	1,026.0	1,155.9	2.00	-2.00	0.00
5,000.0	13.15	62.57	4,848.2	536.7	1,034.3	1,165.3	2.00	-2.00	0.00
5,040.0	12.35	62.57	4,887.2	540.8	1,042.1	1,174.1	2.00	-2.00	0.00
5,080.0	11.55	62.57	4,926.3	544.6	1,049.5	1,182.4	2.00	-2.00	0.00
5,120.0	10.75	62.57	4,965.6	548.2	1,056.3	1,190.1	2.00	-2.00	0.00
5,160.0	9.95	62.57	5,004.9	551.5	1,062.7	1,197.3	2.00	-2.00	0.00
5,200.0	9.15	62.57	5,044.4	554.5	1,068.6	1,203.9	2.00	-2.00	0.00
5,240.0	8.35	62.57	5,083.9	557.3	1,074.0	1,210.0	2.00	-2.00	0.00
5,280.0	7.55	62.57	5,123.5	559.9	1,078.9	1,215.5	2.00	-2.00	0.00
5,320.0	6.75	62.57	5,163.2	562.2	1,083.3	1,220.5	2.00	-2.00	0.00
5,360.0	5.95	62.57	5,203.0	564.2	1,087.3	1,225.0	2.00	-2.00	0.00
5,400.0	5.15	62.57	5,242.8	566.0	1,090.7	1,228.8	2.00	-2.00	0.00
5,440.0	4.35	62.57	5,282.6	567.5	1,093.7	1,232.1	2.00	-2.00	0.00
5,480.0	3.55	62.57	5,322.5	568.8	1,096.1	1,234.9	2.00	-2.00	0.00
5,520.0	2.75	62.57	5,362.5	569.8	1,098.1	1,237.1	2.00	-2.00	0.00
5,560.0	1.95	62.57	5,402.4	570.6	1,099.5	1,238.7	2.00	-2.00	0.00
5,600.0	1.15	62.57	5,442.4	571.1	1,100.5	1,239.8	2.00	-2.00	0.00
5,640.0	0.35	62.57	5,482.4	571.3	1,100.9	1,240.3	2.00	-2.00	0.00
5,657.6	0.00	0.00	5,500.0	571.3	1,101.0	1,240.4	2.00	-2.00	-355.95
TARGET BHL 660'FSL & 1986'FWL									
5,680.0	0.00	0.00	5,522.4	571.3	1,101.0	1,240.4	0.00	0.00	0.00
5,720.0	0.00	0.00	5,562.4	571.3	1,101.0	1,240.4	0.00	0.00	0.00
5,760.0	0.00	0.00	5,602.4	571.3	1,101.0	1,240.4	0.00	0.00	0.00
5,800.0	0.00	0.00	5,642.4	571.3	1,101.0	1,240.4	0.00	0.00	0.00
5,840.0	0.00	0.00	5,682.4	571.3	1,101.0	1,240.4	0.00	0.00	0.00

Database:	Landmark	Local Co-ordinate Reference:	Well Schlotthauer 14-23
Company:	BAYSWATER EXPLORATION & PRODUCTION	TVD Reference:	WELL @ 4977.0ft (Original Well Elev)
Project:	SEC.23-T7N-R67W	MD Reference:	WELL @ 4977.0ft (Original Well Elev)
Site:	Schlotthauer 13-23 Pad Sec.23-T7N-R67W	North Reference:	True
Well:	Schlotthauer 14-23	Survey Calculation Method:	Minimum Curvature
Wellbore:	Wellbore #1		
Design:	Plan #1 (10-27-11)		

Planned Survey

Measured Depth (ft)	Inclination (°)	Azimuth (°)	Vertical Depth (ft)	+N/-S (ft)	+E/-W (ft)	Vertical Section (ft)	Dogleg Rate (°/100ft)	Build Rate (°/100ft)	Turn Rate (°/100ft)
5,880.0	0.00	0.00	5,722.4	571.3	1,101.0	1,240.4	0.00	0.00	0.00
5,920.0	0.00	0.00	5,762.4	571.3	1,101.0	1,240.4	0.00	0.00	0.00
5,960.0	0.00	0.00	5,802.4	571.3	1,101.0	1,240.4	0.00	0.00	0.00
6,000.0	0.00	0.00	5,842.4	571.3	1,101.0	1,240.4	0.00	0.00	0.00
6,040.0	0.00	0.00	5,882.4	571.3	1,101.0	1,240.4	0.00	0.00	0.00
6,080.0	0.00	0.00	5,922.4	571.3	1,101.0	1,240.4	0.00	0.00	0.00
6,120.0	0.00	0.00	5,962.4	571.3	1,101.0	1,240.4	0.00	0.00	0.00
6,160.0	0.00	0.00	6,002.4	571.3	1,101.0	1,240.4	0.00	0.00	0.00
6,200.0	0.00	0.00	6,042.4	571.3	1,101.0	1,240.4	0.00	0.00	0.00
6,240.0	0.00	0.00	6,082.4	571.3	1,101.0	1,240.4	0.00	0.00	0.00
6,280.0	0.00	0.00	6,122.4	571.3	1,101.0	1,240.4	0.00	0.00	0.00
6,320.0	0.00	0.00	6,162.4	571.3	1,101.0	1,240.4	0.00	0.00	0.00
6,360.0	0.00	0.00	6,202.4	571.3	1,101.0	1,240.4	0.00	0.00	0.00
6,400.0	0.00	0.00	6,242.4	571.3	1,101.0	1,240.4	0.00	0.00	0.00
6,440.0	0.00	0.00	6,282.4	571.3	1,101.0	1,240.4	0.00	0.00	0.00
6,480.0	0.00	0.00	6,322.4	571.3	1,101.0	1,240.4	0.00	0.00	0.00
6,520.0	0.00	0.00	6,362.4	571.3	1,101.0	1,240.4	0.00	0.00	0.00
6,560.0	0.00	0.00	6,402.4	571.3	1,101.0	1,240.4	0.00	0.00	0.00
6,600.0	0.00	0.00	6,442.4	571.3	1,101.0	1,240.4	0.00	0.00	0.00
6,640.0	0.00	0.00	6,482.4	571.3	1,101.0	1,240.4	0.00	0.00	0.00
6,680.0	0.00	0.00	6,522.4	571.3	1,101.0	1,240.4	0.00	0.00	0.00
6,720.0	0.00	0.00	6,562.4	571.3	1,101.0	1,240.4	0.00	0.00	0.00
6,760.0	0.00	0.00	6,602.4	571.3	1,101.0	1,240.4	0.00	0.00	0.00
6,800.0	0.00	0.00	6,642.4	571.3	1,101.0	1,240.4	0.00	0.00	0.00
6,840.0	0.00	0.00	6,682.4	571.3	1,101.0	1,240.4	0.00	0.00	0.00
6,880.0	0.00	0.00	6,722.4	571.3	1,101.0	1,240.4	0.00	0.00	0.00
6,920.0	0.00	0.00	6,762.4	571.3	1,101.0	1,240.4	0.00	0.00	0.00
6,960.0	0.00	0.00	6,802.4	571.3	1,101.0	1,240.4	0.00	0.00	0.00
7,000.0	0.00	0.00	6,842.4	571.3	1,101.0	1,240.4	0.00	0.00	0.00
7,040.0	0.00	0.00	6,882.4	571.3	1,101.0	1,240.4	0.00	0.00	0.00
7,080.0	0.00	0.00	6,922.4	571.3	1,101.0	1,240.4	0.00	0.00	0.00
7,120.0	0.00	0.00	6,962.4	571.3	1,101.0	1,240.4	0.00	0.00	0.00
7,159.6	0.00	0.00	7,002.0	571.3	1,101.0	1,240.4	0.00	0.00	0.00
NIOBRARA - LEGAL BOX 400' X 400', 661'FSL & 1986'FWL									
7,160.0	0.00	0.00	7,002.4	571.3	1,101.0	1,240.4	0.00	0.00	0.00
7,200.0	0.00	0.00	7,042.4	571.3	1,101.0	1,240.4	0.00	0.00	0.00
7,240.0	0.00	0.00	7,082.4	571.3	1,101.0	1,240.4	0.00	0.00	0.00
7,280.0	0.00	0.00	7,122.4	571.3	1,101.0	1,240.4	0.00	0.00	0.00
7,320.0	0.00	0.00	7,162.4	571.3	1,101.0	1,240.4	0.00	0.00	0.00
7,360.0	0.00	0.00	7,202.4	571.3	1,101.0	1,240.4	0.00	0.00	0.00
7,400.0	0.00	0.00	7,242.4	571.3	1,101.0	1,240.4	0.00	0.00	0.00
7,431.6	0.00	0.00	7,274.0	571.3	1,101.0	1,240.4	0.00	0.00	0.00
FT. HAYS									
7,440.0	0.00	0.00	7,282.4	571.3	1,101.0	1,240.4	0.00	0.00	0.00
7,469.6	0.00	0.00	7,312.0	571.3	1,101.0	1,240.4	0.00	0.00	0.00
CODELL									
7,480.0	0.00	0.00	7,322.4	571.3	1,101.0	1,240.4	0.00	0.00	0.00
7,519.6	0.00	0.00	7,362.0	571.3	1,101.0	1,240.4	0.00	0.00	0.00
GREENHORN									
7,520.0	0.00	0.00	7,362.4	571.3	1,101.0	1,240.4	0.00	0.00	0.00
7,560.0	0.00	0.00	7,402.4	571.3	1,101.0	1,240.4	0.00	0.00	0.00
7,600.0	0.00	0.00	7,442.4	571.3	1,101.0	1,240.4	0.00	0.00	0.00

Database: Landmark
Company: BAYSWATER EXPLORATION & PRODUCTION
Project: SEC.23-T7N-R67W
Site: Schlotthauer 13-23 Pad Sec.23-T7N-R67W
Well: Schlotthauer 14-23
Wellbore: Wellbore #1
Design: Plan #1 (10-27-11)

Local Co-ordinate Reference: Well Schlotthauer 14-23
TVD Reference: WELL @ 4977.0ft (Original Well Elev)
MD Reference: WELL @ 4977.0ft (Original Well Elev)
North Reference: True
Survey Calculation Method: Minimum Curvature

Planned Survey

Measured Depth (ft)	Inclination (°)	Azimuth (°)	Vertical Depth (ft)	+N/-S (ft)	+E/-W (ft)	Vertical Section (ft)	Dogleg Rate (°/100ft)	Build Rate (°/100ft)	Turn Rate (°/100ft)
7,603.6	0.00	0.00	7,446.0	571.3	1,101.0	1,240.4	0.00	0.00	0.00
GRANEROS									
7,640.0	0.00	0.00	7,482.4	571.3	1,101.0	1,240.4	0.00	0.00	0.00
7,680.0	0.00	0.00	7,522.4	571.3	1,101.0	1,240.4	0.00	0.00	0.00
7,687.6	0.00	0.00	7,530.0	571.3	1,101.0	1,240.4	0.00	0.00	0.00

Targets
Target Name

- hit/miss target	Dip Angle (°)	Dip Dir. (°)	TVD (ft)	+N/-S (ft)	+E/-W (ft)	Northing (ft)	Easting (ft)	Latitude	Longitude
- Shape									
TARGET BHL 660'FS	0.00	0.00	5,500.0	571.3	1,101.0	1,445,377.30	3,177,067.13	40.554214	-104.862780
- plan hits target center									
- Point									
LEGAL BOX 400' X 400'	0.00	0.00	7,002.0	572.3	1,101.0	1,445,378.27	3,177,067.14	40.554217	-104.862780
- plan misses target center by 1.0ft at 7159.6ft MD (7002.0 TVD, 571.3 N, 1101.0 E)									
- Rectangle (sides W400.0 H400.0 D528.0)									

Casing Points

Measured Depth (ft)	Vertical Depth (ft)	Name	Casing Diameter (")	Hole Diameter (")
550.9	550.0	8 5/8"	8-5/8	12-1/4

Formations

Measured Depth (ft)	Vertical Depth (ft)	Name	Lithology	Dip (°)	Dip Direction (°)
3,737.5	3,630.0	PARKMAN		0.00	
4,567.0	4,430.0	SUSSEX		0.00	
4,909.1	4,760.0	SHANNON		0.00	
7,159.6	7,002.0	NIOBRARA		0.00	
7,431.6	7,274.0	FT. HAYS		0.00	
7,469.6	7,312.0	CODELL		0.00	
7,519.6	7,362.0	GREENHORN		0.00	
7,603.6	7,446.0	GRANEROS		0.00	



Directional

BAYSWATER EXPLORATION & PRODUCTION

SEC.23-T7N-R67W

Schlotthauer 13-23 Pad Sec.23-T7N-R67W

Schlotthauer 14-23

Wellbore #1

Plan #1 (10-27-11)

Anticollision Report

28 October, 2011

Company:	BAYSWATER EXPLORATION & PRODUCTION	Local Co-ordinate Reference:	Well Schlotthauer 14-23
Project:	SEC.23-T7N-R67W	TVD Reference:	WELL @ 4977.0ft (Original Well Elev)
Reference Site:	Schlotthauer 13-23 Pad Sec.23-T7N-R67W	MD Reference:	WELL @ 4977.0ft (Original Well Elev)
Site Error:	0.0ft	North Reference:	True
Reference Well:	Schlotthauer 14-23	Survey Calculation Method:	Minimum Curvature
Well Error:	0.0ft	Output errors are at	2.00 sigma
Reference Wellbore	Wellbore #1	Database:	Landmark
Reference Design:	Plan #1 (10-27-11)	Offset TVD Reference:	Offset Datum

Reference	Plan #1 (10-27-11)		
Filter type:	NO GLOBAL FILTER: Using user defined selection & filtering criteria		
Interpolation Method:	Stations	Error Model:	ISCWSA
Depth Range:	Unlimited	Scan Method:	Closest Approach 3D
Results Limited by:	Maximum center-center distance of 10,000.0ft	Error Surface:	Elliptical Conic
Warning Levels Evaluated at:	2.00 Sigma		

Survey Tool Program	Date 10/28/2011			
From (ft)	To (ft)	Survey (Wellbore)	Tool Name	Description
0.0	7,687.6	Plan #1 (10-27-11) (Wellbore #1)	MWD	MWD - Standard

Summary		Reference Measured Depth (ft)	Offset Measured Depth (ft)	Distance Between Centres (ft)	Distance Between Ellipses (ft)	Separation Factor	Warning
Site Name							
Offset Well - Wellbore - Design							
Schlotthauer 13-23 Pad Sec.23-T7N-R67W							
Schlotthauer 3-26 - Wellbore #1 - Plan #1 (10-27-11)		200.0	200.0	15.0	14.3	22.255 CC, ES	
Schlotthauer 3-26 - Wellbore #1 - Plan #1 (10-27-11)		400.0	399.8	21.4	19.9	13.588 SF	

Offset Design Schlotthauer 13-23 Pad Sec.23-T7N-R67W - Schlotthauer 3-26 - Wellbore #1 - Plan #1 (10-27-11)												Offset Site Error:	0.0 ft
Survey Program: 0-MWD												Offset Well Error:	0.0 ft
Reference Measured Depth (ft)	Vertical Depth (ft)	Offset Measured Depth (ft)	Vertical Depth (ft)	Semi Major Axis Reference (ft)	Semi Major Axis Offset (ft)	Highside Toolface (°)	Offset Wellbore Centre +N/-S (ft)	Offset Wellbore Centre +E/-W (ft)	Distance Between Centres (ft)	Distance Between Ellipses (ft)	Minimum Separation (ft)	Separation Factor	Warning
0.0	0.0	0.0	0.0	0.0	0.0	-89.85	0.0	-15.0	15.0	15.0	0.00	N/A	
100.0	100.0	100.0	100.0	0.1	0.1	-89.85	0.0	-15.0	15.0	14.8	0.22	66.764	
200.0	200.0	200.0	200.0	0.3	0.3	-89.85	0.0	-15.0	15.0	14.3	0.67	22.255 CC, ES	
300.0	300.0	300.0	300.0	0.6	0.6	-155.20	0.0	-15.0	16.6	15.4	1.12	14.747	
400.0	399.8	399.8	399.8	0.8	0.8	-161.05	0.0	-15.0	21.4	19.9	1.58	13.588 SF	
500.0	499.5	499.5	499.5	1.0	1.0	-166.45	0.0	-15.0	29.8	27.8	2.04	14.645	
600.0	598.7	598.7	598.7	1.3	1.2	-170.33	0.0	-15.0	41.8	39.3	2.50	16.734	
700.0	697.5	698.0	698.0	1.7	1.4	-173.27	-0.2	-14.7	57.0	54.1	2.95	19.358	
800.0	795.6	797.7	797.6	2.0	1.6	-177.17	-2.1	-11.8	74.2	70.8	3.37	22.013	
900.0	893.1	897.0	896.7	2.5	1.8	-178.50	-5.9	-6.2	93.4	89.6	3.82	24.468	
965.7	956.6	962.1	961.5	2.8	2.0	-175.64	-9.4	-0.9	107.3	103.2	4.13	25.958	
1,000.0	989.7	996.0	995.1	3.0	2.1	-174.18	-11.6	2.3	114.8	110.5	4.31	26.658	
1,100.0	1,086.1	1,094.8	1,093.0	3.5	2.3	-169.92	-19.2	13.6	136.2	131.3	4.86	28.021	
1,200.0	1,182.6	1,193.4	1,190.2	4.0	2.6	-165.62	-28.7	27.6	157.2	151.7	5.49	28.604	
1,300.0	1,279.0	1,291.7	1,286.3	4.6	3.0	-161.29	-39.9	44.4	178.2	171.9	6.23	28.612	
1,400.0	1,375.5	1,389.3	1,381.1	5.1	3.4	-156.93	-52.9	63.7	199.5	192.5	7.06	28.242	
1,500.0	1,471.9	1,486.1	1,474.3	5.6	3.9	-152.59	-67.6	85.5	221.6	213.6	8.01	27.673	
1,600.0	1,568.4	1,582.1	1,566.1	6.2	4.4	-148.59	-83.2	108.7	244.8	235.8	9.02	27.126	
1,700.0	1,664.8	1,678.0	1,657.8	6.7	4.9	-145.28	-98.8	131.9	268.9	258.9	10.06	26.732	
1,800.0	1,761.3	1,773.9	1,749.6	7.3	5.5	-142.50	-114.5	155.2	293.8	282.7	11.11	26.438	
1,900.0	1,857.7	1,869.9	1,841.4	7.8	6.1	-140.16	-130.1	178.4	319.2	307.0	12.16	26.241	
2,000.0	1,954.2	1,965.8	1,933.1	8.4	6.6	-138.16	-145.7	201.6	345.0	331.8	13.22	26.105	
2,100.0	2,050.6	2,061.8	2,024.9	9.0	7.2	-136.43	-161.4	224.8	371.2	356.9	14.27	26.014	
2,200.0	2,147.1	2,157.7	2,116.7	9.5	7.8	-134.94	-177.0	248.1	397.6	382.3	15.32	25.956	

CC - Min centre to center distance or convergent point, SF - min separation factor, ES - min ellipse separation

Company:	BAYSWATER EXPLORATION & PRODUCTION	Local Co-ordinate Reference:	Well Schlotthauer 14-23
Project:	SEC.23-T7N-R67W	TVD Reference:	WELL @ 4977.0ft (Original Well Elev)
Reference Site:	Schlotthauer 13-23 Pad Sec.23-T7N-R67W	MD Reference:	WELL @ 4977.0ft (Original Well Elev)
Site Error:	0.0ft	North Reference:	True
Reference Well:	Schlotthauer 14-23	Survey Calculation Method:	Minimum Curvature
Well Error:	0.0ft	Output errors are at	2.00 sigma
Reference Wellbore	Wellbore #1	Database:	Landmark
Reference Design:	Plan #1 (10-27-11)	Offset TVD Reference:	Offset Datum

Schlotthauer 13-23 Pad Sec.23-T7N-R67W - Schlotthauer 3-26 - Wellbore #1 - Plan #1 (10-27-11)														Offset Site Error:	0.0 ft
Survey Program: 0-MWD														Offset Well Error:	0.0 ft
Reference	Offset		Semi Major Axis		Distance										Warning
Measured Depth (ft)	Vertical Depth (ft)	Measured Depth (ft)	Vertical Depth (ft)	Reference (ft)	Offset (ft)	Highside Toolface (°)	Offset Wellbore Centre +N/-S (ft)	+E/-W (ft)	Between Centres (ft)	Between Ellipses (ft)	Minimum Separation (ft)	Separation Factor			
2,300.0	2,243.5	2,253.7	2,208.5	10.1	8.4	133.63	-192.6	271.3	424.3	407.9	16.37	25.923			
2,400.0	2,340.0	2,349.6	2,300.2	10.6	8.9	132.47	-208.3	294.5	451.2	433.8	17.42	25.906			
2,500.0	2,436.4	2,445.6	2,392.0	11.2	9.5	131.44	-223.9	317.7	478.2	459.7	18.46	25.903			
2,600.0	2,532.9	2,541.5	2,483.8	11.7	10.1	130.52	-239.5	341.0	505.3	485.8	19.50	25.908			
2,700.0	2,629.3	2,637.5	2,575.5	12.3	10.7	129.70	-255.2	364.2	532.6	512.0	20.55	25.921			
2,800.0	2,725.8	2,733.4	2,667.3	12.8	11.3	128.95	-270.8	387.4	559.9	538.3	21.59	25.938			
2,900.0	2,822.2	2,829.3	2,759.1	13.4	11.9	128.28	-286.4	410.6	587.4	564.7	22.63	25.959			
3,000.0	2,918.7	2,925.3	2,850.8	13.9	12.5	127.66	-302.0	433.9	614.8	591.2	23.66	25.982			
3,100.0	3,015.1	3,021.2	2,942.6	14.5	13.1	127.10	-317.7	457.1	642.4	617.7	24.70	26.007			
3,200.0	3,111.6	3,117.2	3,034.4	15.1	13.7	126.58	-333.3	480.3	670.0	644.3	25.74	26.033			
3,300.0	3,208.0	3,213.1	3,126.2	15.6	14.3	126.10	-348.9	503.5	697.7	670.9	26.77	26.060			
3,400.0	3,304.5	3,309.1	3,217.9	16.2	14.9	125.66	-364.6	526.8	725.3	697.5	27.80	26.087			
3,500.0	3,400.9	3,405.0	3,309.7	16.7	15.5	125.26	-380.2	550.0	753.1	724.2	28.84	26.114			
3,600.0	3,497.4	3,501.0	3,401.5	17.3	16.1	124.88	-395.8	573.2	780.8	751.0	29.87	26.141			
3,700.0	3,593.8	3,596.9	3,493.2	17.8	16.7	124.53	-411.5	596.4	808.6	777.7	30.90	26.167			
3,800.0	3,690.3	3,692.8	3,585.0	18.4	17.3	124.20	-427.1	619.7	836.4	804.5	31.93	26.193			
3,900.0	3,786.7	3,788.8	3,676.8	19.0	17.9	123.89	-442.7	642.9	864.3	831.3	32.96	26.219			
4,000.0	3,883.2	3,884.7	3,768.5	19.5	18.5	123.60	-458.3	666.1	892.2	858.2	34.00	26.244			
4,100.0	3,979.6	3,980.7	3,860.3	20.1	19.1	123.33	-474.0	689.3	920.0	885.0	35.03	26.268			
4,200.0	4,076.1	4,076.6	3,952.1	20.6	19.7	123.07	-489.6	712.6	947.9	911.9	36.05	26.292			
4,300.0	4,172.5	4,172.6	4,043.9	21.2	20.2	122.83	-505.2	735.8	975.9	938.8	37.08	26.315			
4,400.0	4,269.0	4,268.5	4,135.6	21.7	20.8	122.60	-520.9	759.0	1,003.8	965.7	38.11	26.337			
4,500.0	4,365.4	4,364.5	4,227.4	22.3	21.4	122.39	-536.5	782.2	1,031.7	992.6	39.14	26.359			
4,600.0	4,461.9	4,460.4	4,319.2	22.8	22.0	122.18	-552.1	805.5	1,059.7	1,019.5	40.17	26.380			
4,700.0	4,558.3	4,556.4	4,410.9	23.4	22.6	121.99	-567.8	828.7	1,087.7	1,046.5	41.20	26.401			
4,800.0	4,654.8	4,652.3	4,502.7	24.0	23.2	121.81	-583.4	851.9	1,115.7	1,073.4	42.23	26.421			
4,891.9	4,743.4	4,740.4	4,587.0	24.5	23.8	121.65	-597.8	873.3	1,141.4	1,098.2	43.17	26.439			
4,900.0	4,751.2	4,748.2	4,594.5	24.5	23.9	121.67	-599.0	875.2	1,143.6	1,100.4	43.26	26.438			
5,000.0	4,848.2	4,844.4	4,686.5	24.9	24.5	121.89	-614.7	898.4	1,170.6	1,126.4	44.24	26.461			
5,100.0	4,945.9	4,940.8	4,778.7	25.3	25.1	121.95	-630.4	921.8	1,195.9	1,150.7	45.18	26.470			
5,200.0	5,044.4	5,037.5	4,871.1	25.6	25.7	121.84	-646.1	945.2	1,219.4	1,173.3	46.07	26.469			
5,300.0	5,143.3	5,134.1	4,963.6	25.9	26.3	121.59	-661.9	968.6	1,241.2	1,194.3	46.90	26.462			
5,400.0	5,242.8	5,230.7	5,055.9	26.1	26.9	121.20	-677.6	991.9	1,261.4	1,213.8	47.68	26.454			
5,500.0	5,342.5	5,353.7	5,174.2	26.3	27.5	120.52	-696.4	1,019.9	1,279.2	1,230.8	48.41	26.424			
5,600.0	5,442.4	5,481.4	5,298.4	26.4	28.0	119.81	-713.0	1,044.4	1,293.3	1,244.3	48.99	26.398			
5,657.6	5,500.0	5,555.9	5,371.4	26.5	28.2	-178.03	-721.2	1,056.6	1,299.6	1,250.3	49.27	26.379			
5,700.0	5,542.4	5,611.2	5,425.9	26.5	28.4	-178.40	-726.6	1,064.7	1,303.6	1,254.2	49.46	26.359			
5,800.0	5,642.4	5,742.8	5,556.2	26.6	28.7	-179.09	-737.1	1,080.3	1,311.4	1,261.5	49.86	26.302			
5,900.0	5,742.4	5,876.0	5,688.7	26.7	29.0	-179.56	-744.3	1,091.0	1,316.7	1,266.5	50.21	26.226			
6,000.0	5,842.4	6,010.1	5,822.6	26.8	29.2	-179.81	-748.0	1,096.6	1,319.5	1,269.0	50.50	26.129			
6,100.0	5,942.4	6,129.9	5,942.4	26.9	29.3	-179.85	-748.6	1,097.4	1,319.9	1,269.2	50.74	26.015			
6,200.0	6,042.4	6,229.9	6,042.4	27.0	29.4	-179.85	-748.6	1,097.4	1,319.9	1,269.0	50.95	25.905			
6,300.0	6,142.4	6,329.9	6,142.4	27.1	29.5	-179.85	-748.6	1,097.4	1,319.9	1,268.8	51.17	25.794			
6,400.0	6,242.4	6,429.9	6,242.4	27.2	29.6	-179.85	-748.6	1,097.4	1,319.9	1,268.5	51.39	25.683			
6,500.0	6,342.4	6,529.9	6,342.4	27.3	29.7	-179.85	-748.6	1,097.4	1,319.9	1,268.3	51.62	25.571			
6,600.0	6,442.4	6,629.9	6,442.4	27.4	29.8	-179.85	-748.6	1,097.4	1,319.9	1,268.1	51.85	25.459			
6,700.0	6,542.4	6,729.9	6,542.4	27.6	29.9	-179.85	-748.6	1,097.4	1,319.9	1,267.9	52.08	25.346			
6,800.0	6,642.4	6,829.9	6,642.4	27.7	30.0	-179.85	-748.6	1,097.4	1,319.9	1,267.6	52.31	25.233			
6,900.0	6,742.4	6,929.9	6,742.4	27.8	30.1	-179.85	-748.6	1,097.4	1,319.9	1,267.4	52.55	25.119			
7,000.0	6,842.4	7,029.9	6,842.4	27.9	30.2	-179.85	-748.6	1,097.4	1,319.9	1,267.2	52.79	25.006			
7,100.0	6,942.4	7,129.9	6,942.4	28.0	30.3	-179.85	-748.6	1,097.4	1,319.9	1,266.9	53.03	24.892			

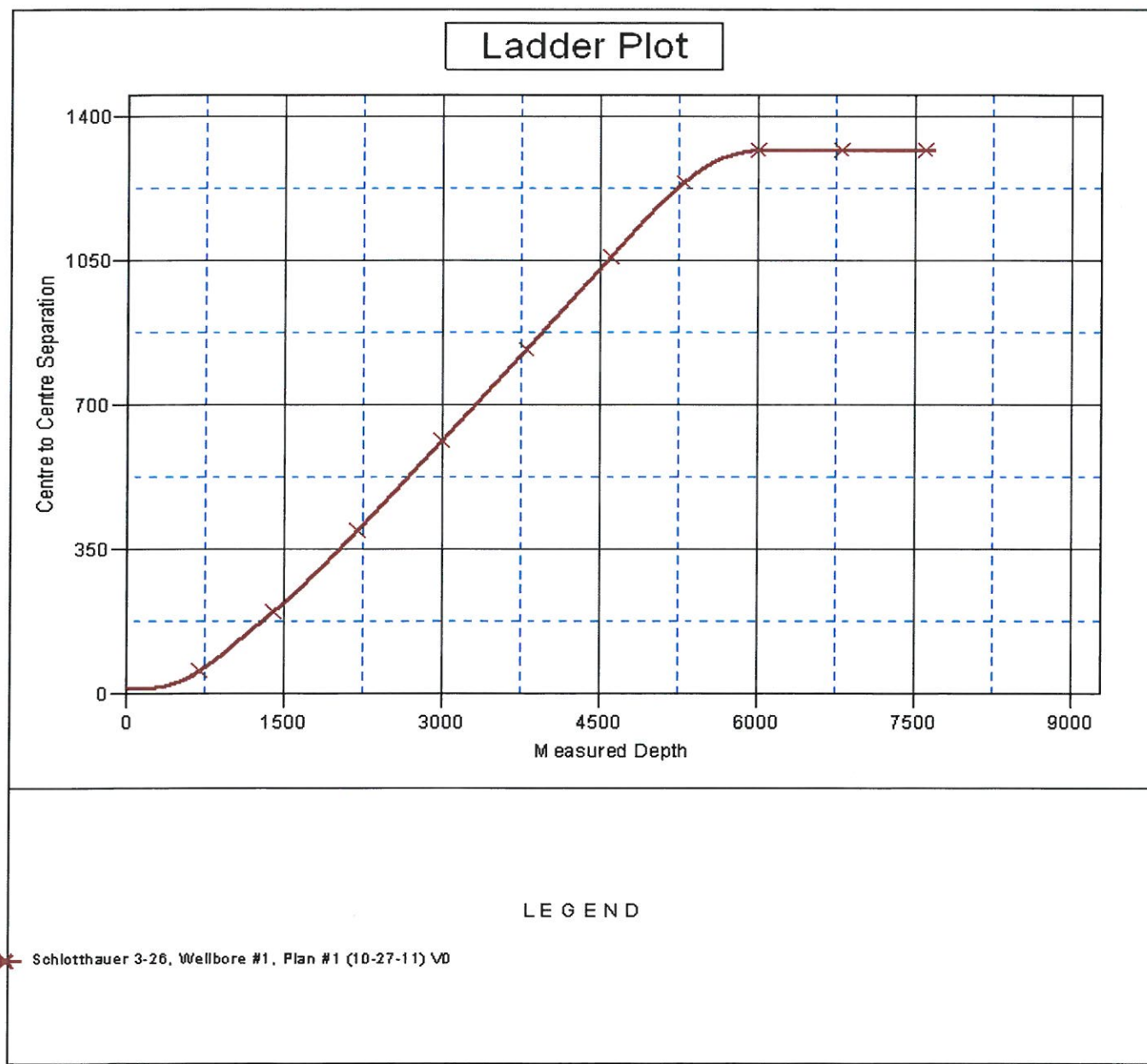
CC - Min centre to center distance or convergent point, SF - min separation factor, ES - min ellipse separation

Company:	BAYSWATER EXPLORATION & PRODUCTION	Local Co-ordinate Reference:	Well Schlotthauer 14-23
Project:	SEC.23-T7N-R67W	TVD Reference:	WELL @ 4977.0ft (Original Well Elev)
Reference Site:	Schlotthauer 13-23 Pad Sec.23-T7N-R67W	MD Reference:	WELL @ 4977.0ft (Original Well Elev)
Site Error:	0.0ft	North Reference:	True
Reference Well:	Schlotthauer 14-23	Survey Calculation Method:	Minimum Curvature
Well Error:	0.0ft	Output errors are at	2.00 sigma
Reference Wellbore	Wellbore #1	Database:	Landmark
Reference Design:	Plan #1 (10-27-11)	Offset TVD Reference:	Offset Datum

Offset Design Schlotthauer 13-23 Pad Sec.23-T7N-R67W - Schlotthauer 3-26 - Wellbore #1 - Plan #1 (10-27-11)													Offset Site Error:	0.0 ft
Survey Program: 0-MWD													Offset Well Error:	0.0 ft
Reference	Offset	Semi Major Axis			Distance									Warning
Measured Depth (ft)	Vertical Depth (ft)	Measured Depth (ft)	Vertical Depth (ft)	Reference (ft)	Offset (ft)	Highside Toolface (°)	Offset Wellbore Centre +N/-S (ft)	Offset Wellbore Centre +E/-W (ft)	Between Centres (ft)	Between Ellipses (ft)	Minimum Separation (ft)	Separation Factor		
7,200.0	7,042.4	7,229.9	7,042.4	28.1	30.4	-179.85	-748.6	1,097.4	1,319.9	1,266.7	53.27	24.777		
7,300.0	7,142.4	7,329.9	7,142.4	28.3	30.5	-179.85	-748.6	1,097.4	1,319.9	1,266.4	53.52	24.663		
7,400.0	7,242.4	7,429.9	7,242.4	28.4	30.6	-179.85	-748.6	1,097.4	1,319.9	1,266.2	53.77	24.549		
7,500.0	7,342.4	7,529.9	7,342.4	28.5	30.7	-179.85	-748.6	1,097.4	1,319.9	1,265.9	54.02	24.434		
7,600.0	7,442.4	7,629.9	7,442.4	28.6	30.8	-179.85	-748.6	1,097.4	1,319.9	1,265.7	54.28	24.319		
7,609.1	7,451.5	7,639.0	7,451.5	28.6	30.8	-179.85	-748.6	1,097.4	1,319.9	1,265.6	54.30	24.309		
7,687.6	7,530.0	7,662.5	7,475.0	28.7	30.8	-179.85	-748.6	1,097.4	1,321.1	1,266.7	54.43	24.270		

Company:	BAYSWATER EXPLORATION & PRODUCTION	Local Co-ordinate Reference:	Well Schlotthauer 14-23
Project:	SEC.23-T7N-R67W	TVD Reference:	WELL @ 4977.0ft (Original Well Elev)
Reference Site:	Schlotthauer 13-23 Pad Sec.23-T7N-R67W	MD Reference:	WELL @ 4977.0ft (Original Well Elev)
Site Error:	0.0ft	North Reference:	True
Reference Well:	Schlotthauer 14-23	Survey Calculation Method:	Minimum Curvature
Well Error:	0.0ft	Output errors are at	2.00 sigma
Reference Wellbore	Wellbore #1	Database:	Landmark
Reference Design:	Plan #1 (10-27-11)	Offset TVD Reference:	Offset Datum

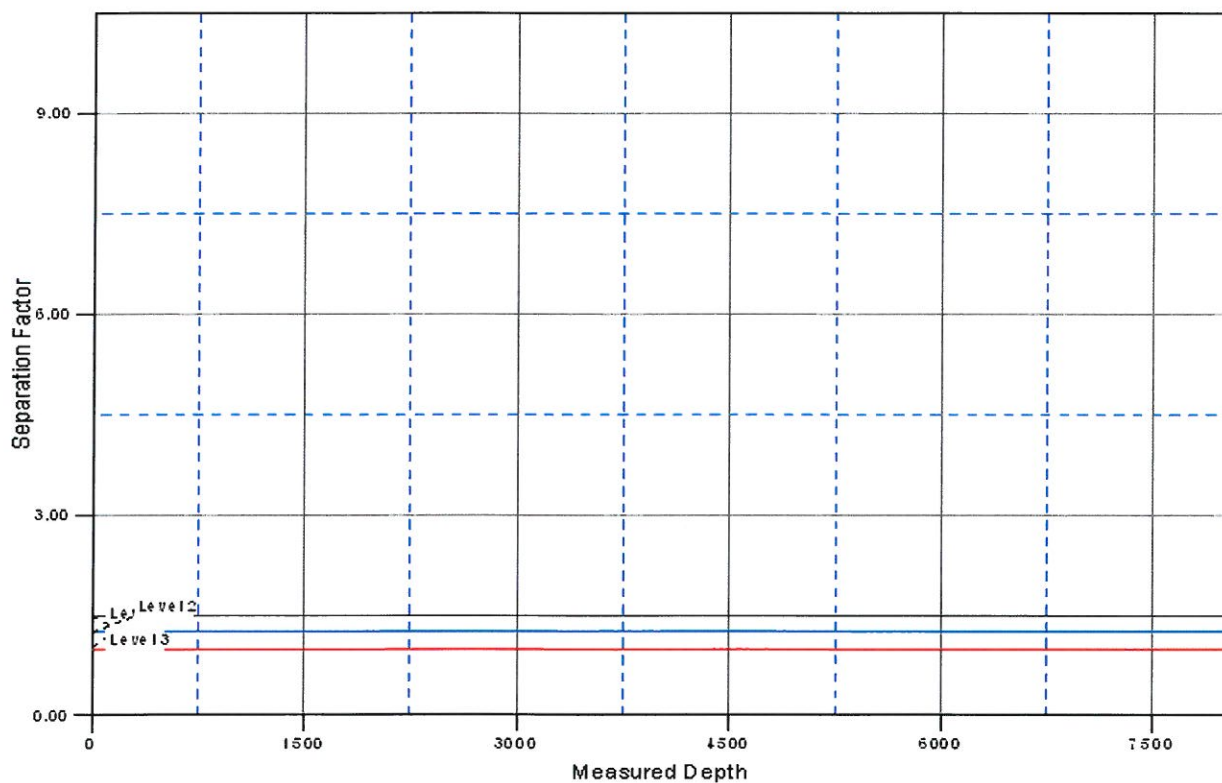
Reference Depths are relative to WELL @ 4977.0ft (Original Well Elev) Coordinates are relative to: Schlotthauer 14-23
Offset Depths are relative to Offset Datum
Central Meridian is -105.500000 °
Coordinate System is US State Plane 1983, Colorado Northern Zone
Grid Convergence at Surface is: 0.41°



Company:	BAYSWATER EXPLORATION & PRODUCTION	Local Co-ordinate Reference:	Well Schlotthauer 14-23
Project:	SEC.23-T7N-R67W	TVD Reference:	WELL @ 4977.0ft (Original Well Elev)
Reference Site:	Schlotthauer 13-23 Pad Sec.23-T7N-R67W	MD Reference:	WELL @ 4977.0ft (Original Well Elev)
Site Error:	0.0ft	North Reference:	True
Reference Well:	Schlotthauer 14-23	Survey Calculation Method:	Minimum Curvature
Well Error:	0.0ft	Output errors are at	2.00 sigma
Reference Wellbore	Wellbore #1	Database:	Landmark
Reference Design:	Plan #1 (10-27-11)	Offset TVD Reference:	Offset Datum

Reference Depths are relative to WELL @ 4977.0ft (Original Well Elev) Coordinates are relative to: Schlotthauer 14-23
 Offset Depths are relative to Offset Datum Coordinate System is US State Plane 1983, Colorado Northern Zone
 Central Meridian is -105.500000 ° Grid Convergence at Surface is: 0.41°

Separation Factor Plot



LEGEND

* Schlotthauer 3-26, Wellbore #1, Plan #1 (10-27-11) VD