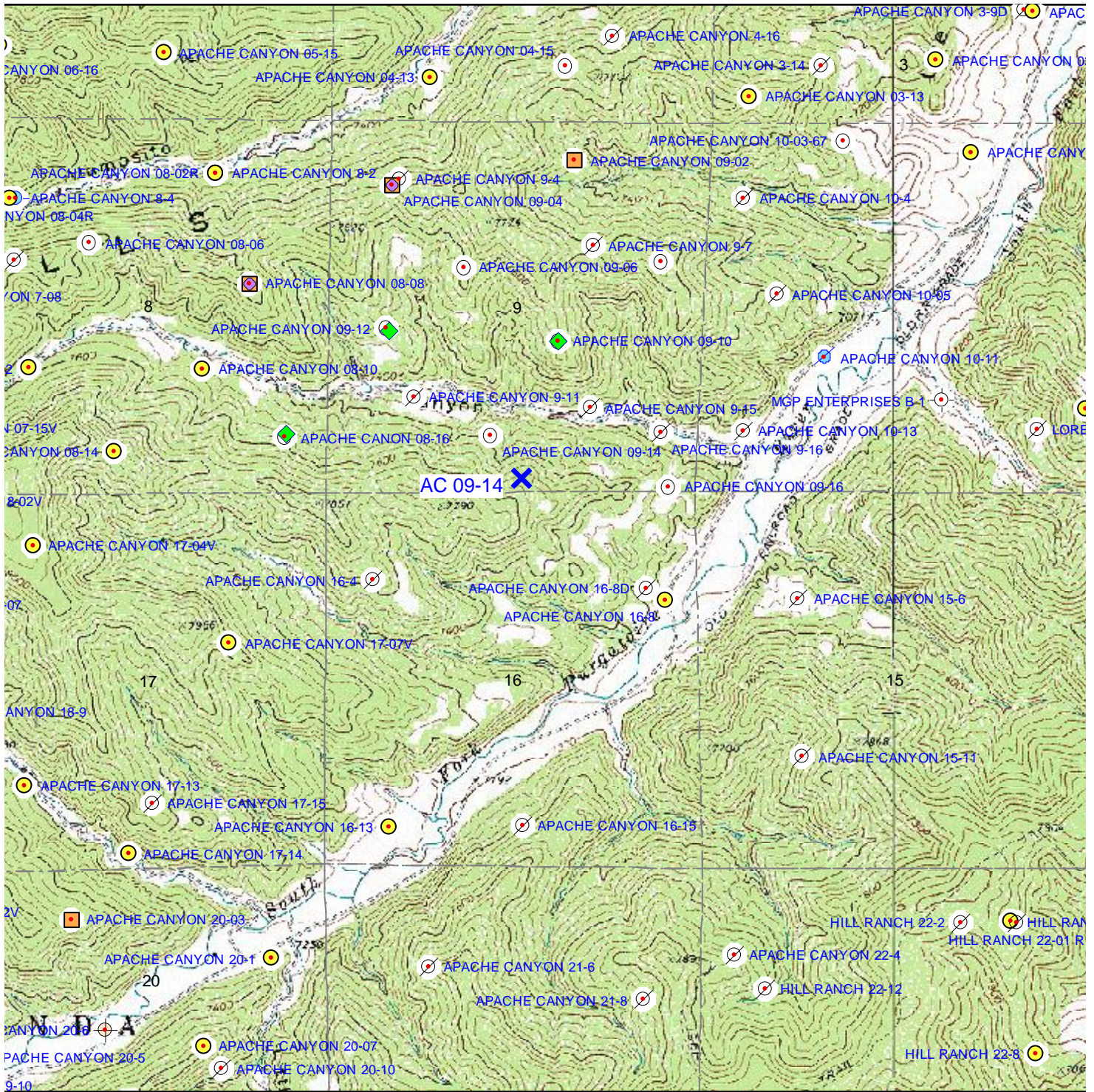


TOPOGRAPHIC MAP



AC 09-14 X

	Proposed Well
	Producing
	Plugged & Abandoned
	Abandoned Location
	Shut-In
	Pending Permits
	Permits

APACHE CANYON 09-14
303' FSL & 2,532' FWL
SEC. 09, T34S, R67W, 6th P.M.
LAS ANIMAS COUNTY, CO

Scale 1" = 2,000'