

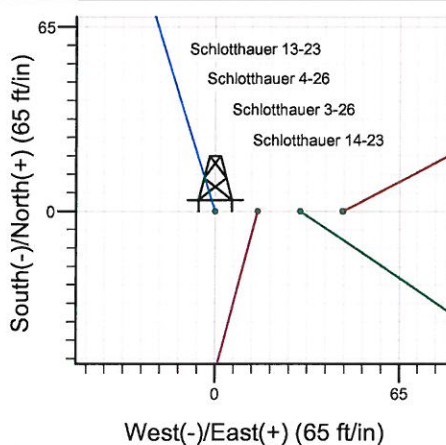
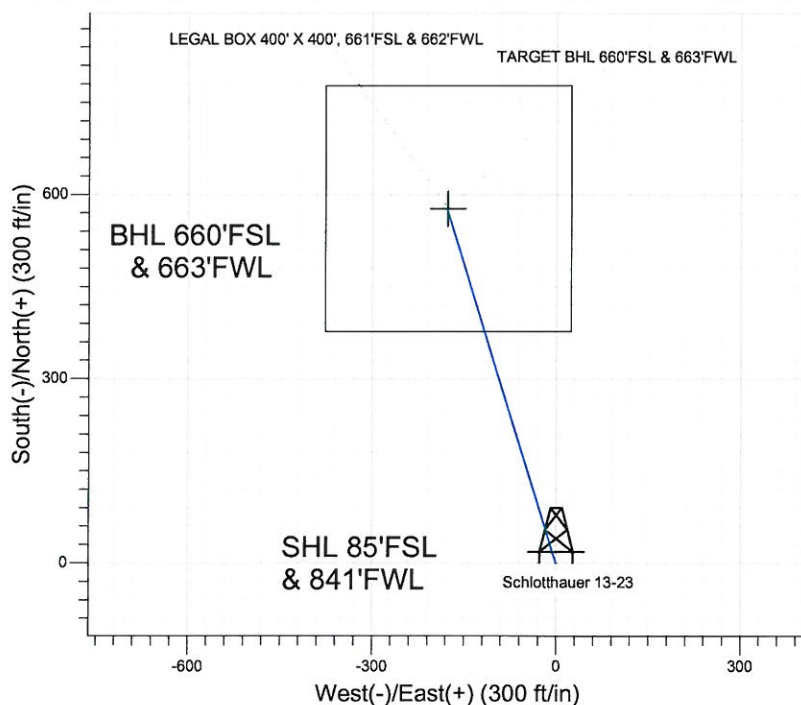
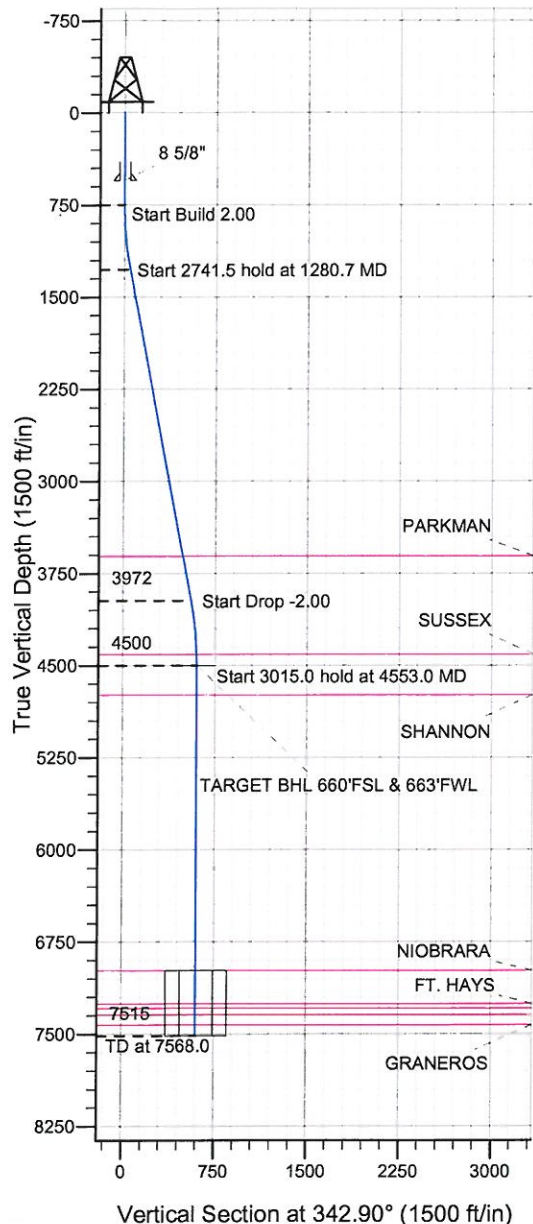
Well Name: Schlotthauer 13-23

Surface Location: Schlotthauer 13-23 Pad Sec.23-T7N-R67W
North American Datum 1983 , US State Plane 1983 Colorado Northern Zone

Ground Elevation: 4966.0

+N/-S	+E/-W	Northing	Easting	Latitude	Longitude	Slot
0.0	0.0	1444797.82	3175925.27	40.552646	-104.866904	
Original Well EleWELL @ 4977.0ft (Original Well Elev)						

BAYSWATER EXPLORATION & PRODUCTION



Schlotthauer 13-23 Pad Sec.23-T7N-R67W
Schlotthauer 13-23
Plan #1 (10-27-11)
10:19, October 28 2011



Azimuths to True North
Magnetic North: 8.88°
Magnetic Field
Strength: 53160.4nT
Dip Angle: 67.14°
Date: 10/27/2011
Model: IGRF2010

WELLBORE TARGET DETAILS (LAT/LONG)

Name	TVD	+N/-S	+E/-W	Latitude	Longitude	Shape
TARGET BHL 660'FSL & 663'FWL	4500.0	576.4	-177.3	40.554228	-104.867542	Point
LEGAL BOX 400' X 400', 661'FSL & 662'FWL	6982.0	577.4	-176.3	40.554231	-104.867538	Rectangle (Sides: L400.0 W400.0)

SECTION DETAILS

Sec	MD	Inc	Azi	TVD	+N/-S	+E/-W	DLeg	TFace	VSec	Target
1	0.0	0.00	0.00	0.0	0.0	0.0	0.00	0.00	0.0	
2	750.0	0.00	0.00	750.0	0.0	0.0	0.00	0.00	0.0	
3	1280.7	10.61	342.90	1277.7	46.9	-14.4	2.00	342.90	49.0	
4	4022.2	10.61	342.90	3972.3	529.5	-162.9	0.00	0.00	554.0	
5	4553.0	0.00	0.00	4500.0	576.4	-177.3	2.00	180.00	603.1	TARGET BHL 660'FSL & 663'FWL
6	7568.0	0.00	0.00	7515.0	576.4	-177.3	0.00	0.00	603.1	



Directional

BAYSWATER EXPLORATION & PRODUCTION

SEC.23-T7N-R67W

Schlotthauer 13-23 Pad Sec.23-T7N-R67W

Schlotthauer 13-23

Wellbore #1

Plan: Plan #1 (10-27-11)

Standard Planning Report

28 October, 2011

Database:	Landmark	Local Co-ordinate Reference:	Well Schlotthauer 13-23
Company:	BAYSWATER EXPLORATION & PRODUCTION	TVD Reference:	WELL @ 4977.0ft (Original Well Elev)
Project:	SEC.23-T7N-R67W	MD Reference:	WELL @ 4977.0ft (Original Well Elev)
Site:	Schlotthauer 13-23 Pad Sec.23-T7N-R67W	North Reference:	True
Well:	Schlotthauer 13-23	Survey Calculation Method:	Minimum Curvature
Wellbore:	Wellbore #1		
Design:	Plan #1 (10-27-11)		

Project	SEC.23-T7N-R67W, Weld County, CO		
Map System:	US State Plane 1983	System Datum:	Mean Sea Level
Geo Datum:	North American Datum 1983		Using Well Reference Point
Map Zone:	Colorado Northern Zone		Using geodetic scale factor

Site	Schlotthauer 13-23 Pad Sec.23-T7N-R67W				
Site Position:		Northing:	1,444,798.08ft	Latitude:	40.552646
From:	Lat/Long	Easting:	3,175,955.28ft	Longitude:	-104.866796
Position Uncertainty:	0.0 ft	Slot Radius:	"	Grid Convergence:	0.41 °

Well	Schlotthauer 13-23					
Well Position	+N/-S	0.0 ft	Northing:	1,444,797.82 ft	Latitude:	40.552646
	+E/-W	-30.0 ft	Easting:	3,175,925.27 ft	Longitude:	-104.866904
Position Uncertainty		0.0 ft	Wellhead Elevation:	ft	Ground Level:	4,966.0 ft

Wellbore	Wellbore #1				
Magnetics	Model Name	Sample Date	Declination (°)	Dip Angle (°)	Field Strength (nT)
	IGRF2010	10/27/2011	8.88	67.14	53,160

Design	Plan #1 (10-27-11)			
---------------	--------------------	--	--	--

Audit Notes:				
Version:	Phase:	PROTOTYPE	Tie On Depth:	0.0
Vertical Section:	Depth From (TVD)	+N/-S (ft)	+E/-W (ft)	Direction (°)
	0.0	0.0	0.0	342.90

Plan Sections										
Measured Depth (ft)	Inclination (°)	Azimuth (°)	Vertical Depth (ft)	+N/-S (ft)	+E/-W (ft)	Dogleg Rate (°/100ft)	Build Rate (°/100ft)	Turn Rate (°/100ft)	TFO (°)	Target
0.0	0.00	0.00	0.0	0.0	0.0	0.00	0.00	0.00	0.00	
750.0	0.00	0.00	750.0	0.0	0.0	0.00	0.00	0.00	0.00	
1,280.7	10.61	342.90	1,277.7	46.9	-14.4	2.00	2.00	0.00	342.90	
4,022.2	10.61	342.90	3,972.3	529.5	-162.9	0.00	0.00	0.00	0.00	
4,553.0	0.00	0.00	4,500.0	576.4	-177.3	2.00	-2.00	0.00	180.00	TARGET BHL 660'I
7,568.0	0.00	0.00	7,515.0	576.4	-177.3	0.00	0.00	0.00	0.00	

Database:	Landmark	Local Co-ordinate Reference:	Well Schlotthauer 13-23
Company:	BAYSWATER EXPLORATION & PRODUCTION	TVD Reference:	WELL @ 4977.0ft (Original Well Elev)
Project:	SEC.23-T7N-R67W	MD Reference:	WELL @ 4977.0ft (Original Well Elev)
Site:	Schlotthauer 13-23 Pad Sec.23-T7N-R67W	North Reference:	True
Well:	Schlotthauer 13-23	Survey Calculation Method:	Minimum Curvature
Wellbore:	Wellbore #1		
Design:	Plan #1 (10-27-11)		

Planned Survey

Measured Depth (ft)	Inclination (°)	Azimuth (°)	Vertical Depth (ft)	+N/-S (ft)	+E/-W (ft)	Vertical Section (ft)	Dogleg Rate (°/100ft)	Build Rate (°/100ft)	Turn Rate (°/100ft)
0.0	0.00	0.00	0.0	0.0	0.0	0.0	0.00	0.00	0.00
40.0	0.00	0.00	40.0	0.0	0.0	0.0	0.00	0.00	0.00
80.0	0.00	0.00	80.0	0.0	0.0	0.0	0.00	0.00	0.00
120.0	0.00	0.00	120.0	0.0	0.0	0.0	0.00	0.00	0.00
160.0	0.00	0.00	160.0	0.0	0.0	0.0	0.00	0.00	0.00
200.0	0.00	0.00	200.0	0.0	0.0	0.0	0.00	0.00	0.00
240.0	0.00	0.00	240.0	0.0	0.0	0.0	0.00	0.00	0.00
280.0	0.00	0.00	280.0	0.0	0.0	0.0	0.00	0.00	0.00
320.0	0.00	0.00	320.0	0.0	0.0	0.0	0.00	0.00	0.00
360.0	0.00	0.00	360.0	0.0	0.0	0.0	0.00	0.00	0.00
400.0	0.00	0.00	400.0	0.0	0.0	0.0	0.00	0.00	0.00
440.0	0.00	0.00	440.0	0.0	0.0	0.0	0.00	0.00	0.00
480.0	0.00	0.00	480.0	0.0	0.0	0.0	0.00	0.00	0.00
520.0	0.00	0.00	520.0	0.0	0.0	0.0	0.00	0.00	0.00
550.0	0.00	0.00	550.0	0.0	0.0	0.0	0.00	0.00	0.00
8 5/8"									
560.0	0.00	0.00	560.0	0.0	0.0	0.0	0.00	0.00	0.00
600.0	0.00	0.00	600.0	0.0	0.0	0.0	0.00	0.00	0.00
640.0	0.00	0.00	640.0	0.0	0.0	0.0	0.00	0.00	0.00
680.0	0.00	0.00	680.0	0.0	0.0	0.0	0.00	0.00	0.00
720.0	0.00	0.00	720.0	0.0	0.0	0.0	0.00	0.00	0.00
750.0	0.00	0.00	750.0	0.0	0.0	0.0	0.00	0.00	0.00
760.0	0.20	342.90	760.0	0.0	0.0	0.0	2.00	2.00	0.00
800.0	1.00	342.90	800.0	0.4	-0.1	0.4	2.00	2.00	0.00
840.0	1.80	342.90	840.0	1.4	-0.4	1.4	2.00	2.00	0.00
880.0	2.60	342.90	880.0	2.8	-0.9	2.9	2.00	2.00	0.00
920.0	3.40	342.90	919.9	4.8	-1.5	5.0	2.00	2.00	0.00
960.0	4.20	342.90	959.8	7.4	-2.3	7.7	2.00	2.00	0.00
1,000.0	5.00	342.90	999.7	10.4	-3.2	10.9	2.00	2.00	0.00
1,040.0	5.80	342.90	1,039.5	14.0	-4.3	14.7	2.00	2.00	0.00
1,080.0	6.60	342.90	1,079.3	18.1	-5.6	19.0	2.00	2.00	0.00
1,120.0	7.40	342.90	1,119.0	22.8	-7.0	23.9	2.00	2.00	0.00
1,160.0	8.20	342.90	1,158.6	28.0	-8.6	29.3	2.00	2.00	0.00
1,200.0	9.00	342.90	1,198.2	33.7	-10.4	35.3	2.00	2.00	0.00
1,240.0	9.80	342.90	1,237.6	40.0	-12.3	41.8	2.00	2.00	0.00
1,280.0	10.60	342.90	1,277.0	46.7	-14.4	48.9	2.00	2.00	0.00
1,280.7	10.61	342.90	1,277.7	46.9	-14.4	49.0	2.00	2.00	0.00
1,320.0	10.61	342.90	1,316.3	53.8	-16.5	56.3	0.00	0.00	0.00
1,360.0	10.61	342.90	1,355.6	60.8	-18.7	63.6	0.00	0.00	0.00
1,400.0	10.61	342.90	1,394.9	67.9	-20.9	71.0	0.00	0.00	0.00
1,440.0	10.61	342.90	1,434.2	74.9	-23.0	78.4	0.00	0.00	0.00
1,480.0	10.61	342.90	1,473.6	81.9	-25.2	85.7	0.00	0.00	0.00
1,520.0	10.61	342.90	1,512.9	89.0	-27.4	93.1	0.00	0.00	0.00
1,560.0	10.61	342.90	1,552.2	96.0	-29.5	100.5	0.00	0.00	0.00
1,600.0	10.61	342.90	1,591.5	103.1	-31.7	107.8	0.00	0.00	0.00
1,640.0	10.61	342.90	1,630.8	110.1	-33.9	115.2	0.00	0.00	0.00
1,680.0	10.61	342.90	1,670.1	117.2	-36.0	122.6	0.00	0.00	0.00
1,720.0	10.61	342.90	1,709.5	124.2	-38.2	129.9	0.00	0.00	0.00
1,760.0	10.61	342.90	1,748.8	131.2	-40.4	137.3	0.00	0.00	0.00
1,800.0	10.61	342.90	1,788.1	138.3	-42.5	144.7	0.00	0.00	0.00
1,840.0	10.61	342.90	1,827.4	145.3	-44.7	152.0	0.00	0.00	0.00
1,880.0	10.61	342.90	1,866.7	152.4	-46.9	159.4	0.00	0.00	0.00
1,920.0	10.61	342.90	1,906.0	159.4	-49.0	166.8	0.00	0.00	0.00

Database: Landmark
Company: BAYSWATER EXPLORATION & PRODUCTION
Project: SEC.23-T7N-R67W
Site: Schlotthauer 13-23 Pad Sec.23-T7N-R67W
Well: Schlotthauer 13-23
Wellbore: Wellbore #1
Design: Plan #1 (10-27-11)

Local Co-ordinate Reference: Well Schlotthauer 13-23
TVD Reference: WELL @ 4977.0ft (Original Well Elev)
MD Reference: WELL @ 4977.0ft (Original Well Elev)
North Reference: True
Survey Calculation Method: Minimum Curvature

Planned Survey

Measured Depth (ft)	Inclination (°)	Azimuth (°)	Vertical Depth (ft)	+N/-S (ft)	+E/-W (ft)	Vertical Section (ft)	Dogleg Rate (°/100ft)	Build Rate (°/100ft)	Turn Rate (°/100ft)
1,960.0	10.61	342.90	1,945.3	166.5	-51.2	174.1	0.00	0.00	0.00
2,000.0	10.61	342.90	1,984.7	173.5	-53.4	181.5	0.00	0.00	0.00
2,040.0	10.61	342.90	2,024.0	180.5	-55.5	188.9	0.00	0.00	0.00
2,080.0	10.61	342.90	2,063.3	187.6	-57.7	196.3	0.00	0.00	0.00
2,120.0	10.61	342.90	2,102.6	194.6	-59.9	203.6	0.00	0.00	0.00
2,160.0	10.61	342.90	2,141.9	201.7	-62.0	211.0	0.00	0.00	0.00
2,200.0	10.61	342.90	2,181.2	208.7	-64.2	218.4	0.00	0.00	0.00
2,240.0	10.61	342.90	2,220.6	215.8	-66.4	225.7	0.00	0.00	0.00
2,280.0	10.61	342.90	2,259.9	222.8	-68.5	233.1	0.00	0.00	0.00
2,320.0	10.61	342.90	2,299.2	229.8	-70.7	240.5	0.00	0.00	0.00
2,360.0	10.61	342.90	2,338.5	236.9	-72.9	247.8	0.00	0.00	0.00
2,400.0	10.61	342.90	2,377.8	243.9	-75.0	255.2	0.00	0.00	0.00
2,440.0	10.61	342.90	2,417.1	251.0	-77.2	262.6	0.00	0.00	0.00
2,480.0	10.61	342.90	2,456.4	258.0	-79.4	269.9	0.00	0.00	0.00
2,520.0	10.61	342.90	2,495.8	265.1	-81.5	277.3	0.00	0.00	0.00
2,560.0	10.61	342.90	2,535.1	272.1	-83.7	284.7	0.00	0.00	0.00
2,600.0	10.61	342.90	2,574.4	279.1	-85.9	292.0	0.00	0.00	0.00
2,640.0	10.61	342.90	2,613.7	286.2	-88.0	299.4	0.00	0.00	0.00
2,680.0	10.61	342.90	2,653.0	293.2	-90.2	306.8	0.00	0.00	0.00
2,720.0	10.61	342.90	2,692.3	300.3	-92.4	314.1	0.00	0.00	0.00
2,760.0	10.61	342.90	2,731.7	307.3	-94.5	321.5	0.00	0.00	0.00
2,800.0	10.61	342.90	2,771.0	314.3	-96.7	328.9	0.00	0.00	0.00
2,840.0	10.61	342.90	2,810.3	321.4	-98.9	336.3	0.00	0.00	0.00
2,880.0	10.61	342.90	2,849.6	328.4	-101.0	343.6	0.00	0.00	0.00
2,920.0	10.61	342.90	2,888.9	335.5	-103.2	351.0	0.00	0.00	0.00
2,960.0	10.61	342.90	2,928.2	342.5	-105.4	358.4	0.00	0.00	0.00
3,000.0	10.61	342.90	2,967.5	349.6	-107.5	365.7	0.00	0.00	0.00
3,040.0	10.61	342.90	3,006.9	356.6	-109.7	373.1	0.00	0.00	0.00
3,080.0	10.61	342.90	3,046.2	363.6	-111.9	380.5	0.00	0.00	0.00
3,120.0	10.61	342.90	3,085.5	370.7	-114.0	387.8	0.00	0.00	0.00
3,160.0	10.61	342.90	3,124.8	377.7	-116.2	395.2	0.00	0.00	0.00
3,200.0	10.61	342.90	3,164.1	384.8	-118.4	402.6	0.00	0.00	0.00
3,240.0	10.61	342.90	3,203.4	391.8	-120.5	409.9	0.00	0.00	0.00
3,280.0	10.61	342.90	3,242.8	398.9	-122.7	417.3	0.00	0.00	0.00
3,320.0	10.61	342.90	3,282.1	405.9	-124.8	424.7	0.00	0.00	0.00
3,360.0	10.61	342.90	3,321.4	412.9	-127.0	432.0	0.00	0.00	0.00
3,400.0	10.61	342.90	3,360.7	420.0	-129.2	439.4	0.00	0.00	0.00
3,440.0	10.61	342.90	3,400.0	427.0	-131.3	446.8	0.00	0.00	0.00
3,480.0	10.61	342.90	3,439.3	434.1	-133.5	454.1	0.00	0.00	0.00
3,520.0	10.61	342.90	3,478.6	441.1	-135.7	461.5	0.00	0.00	0.00
3,560.0	10.61	342.90	3,518.0	448.2	-137.8	468.9	0.00	0.00	0.00
3,600.0	10.61	342.90	3,557.3	455.2	-140.0	476.2	0.00	0.00	0.00
3,640.0	10.61	342.90	3,596.6	462.2	-142.2	483.6	0.00	0.00	0.00
3,653.6	10.61	342.90	3,610.0	464.6	-142.9	486.1	0.00	0.00	0.00
PARKMAN									
3,680.0	10.61	342.90	3,635.9	469.3	-144.3	491.0	0.00	0.00	0.00
3,720.0	10.61	342.90	3,675.2	476.3	-146.5	498.4	0.00	0.00	0.00
3,760.0	10.61	342.90	3,714.5	483.4	-148.7	505.7	0.00	0.00	0.00
3,800.0	10.61	342.90	3,753.9	490.4	-150.8	513.1	0.00	0.00	0.00
3,840.0	10.61	342.90	3,793.2	497.5	-153.0	520.5	0.00	0.00	0.00
3,880.0	10.61	342.90	3,832.5	504.5	-155.2	527.8	0.00	0.00	0.00
3,920.0	10.61	342.90	3,871.8	511.5	-157.3	535.2	0.00	0.00	0.00
3,960.0	10.61	342.90	3,911.1	518.6	-159.5	542.6	0.00	0.00	0.00

Database: Landmark
Company: BAYSWATER EXPLORATION & PRODUCTION
Project: SEC.23-T7N-R67W
Site: Schlotthauer 13-23 Pad Sec.23-T7N-R67W
Well: Schlotthauer 13-23
Wellbore: Wellbore #1
Design: Plan #1 (10-27-11)

Local Co-ordinate Reference: Well Schlotthauer 13-23
TVD Reference: WELL @ 4977.0ft (Original Well Elev)
MD Reference: WELL @ 4977.0ft (Original Well Elev)
North Reference: True
Survey Calculation Method: Minimum Curvature

Planned Survey

Measured Depth (ft)	Inclination (°)	Azimuth (°)	Vertical Depth (ft)	+N/-S (ft)	+E/-W (ft)	Vertical Section (ft)	Dogleg Rate (°/100ft)	Build Rate (°/100ft)	Turn Rate (°/100ft)
4,000.0	10.61	342.90	3,950.4	525.6	-161.7	549.9	0.00	0.00	0.00
4,022.2	10.61	342.90	3,972.3	529.5	-162.9	554.0	0.00	0.00	0.00
4,040.0	10.26	342.90	3,989.8	532.6	-163.8	557.2	2.00	-2.00	0.00
4,080.0	9.46	342.90	4,029.2	539.2	-165.8	564.1	2.00	-2.00	0.00
4,120.0	8.66	342.90	4,068.7	545.2	-167.7	570.4	2.00	-2.00	0.00
4,160.0	7.86	342.90	4,108.3	550.7	-169.4	576.1	2.00	-2.00	0.00
4,200.0	7.06	342.90	4,147.9	555.6	-170.9	581.3	2.00	-2.00	0.00
4,240.0	6.26	342.90	4,187.6	560.1	-172.3	586.0	2.00	-2.00	0.00
4,280.0	5.46	342.90	4,227.4	564.0	-173.5	590.1	2.00	-2.00	0.00
4,320.0	4.66	342.90	4,267.3	567.4	-174.5	593.6	2.00	-2.00	0.00
4,360.0	3.86	342.90	4,307.2	570.2	-175.4	596.6	2.00	-2.00	0.00
4,400.0	3.06	342.90	4,347.1	572.5	-176.1	599.0	2.00	-2.00	0.00
4,440.0	2.26	342.90	4,387.1	574.3	-176.6	600.8	2.00	-2.00	0.00
4,463.0	1.80	342.90	4,410.0	575.1	-176.9	601.6	2.00	-2.00	0.00
SUSSEX									
4,480.0	1.46	342.90	4,427.0	575.5	-177.0	602.1	2.00	-2.00	0.00
4,520.0	0.66	342.90	4,467.0	576.2	-177.2	602.9	2.00	-2.00	0.00
4,553.0	0.00	0.00	4,500.0	576.4	-177.3	603.1	2.00	-2.00	0.00
TARGET BHL 660'FSL & 663'FWL									
4,560.0	0.00	0.00	4,507.0	576.4	-177.3	603.1	0.00	0.00	0.00
4,600.0	0.00	0.00	4,547.0	576.4	-177.3	603.1	0.00	0.00	0.00
4,640.0	0.00	0.00	4,587.0	576.4	-177.3	603.1	0.00	0.00	0.00
4,680.0	0.00	0.00	4,627.0	576.4	-177.3	603.1	0.00	0.00	0.00
4,720.0	0.00	0.00	4,667.0	576.4	-177.3	603.1	0.00	0.00	0.00
4,760.0	0.00	0.00	4,707.0	576.4	-177.3	603.1	0.00	0.00	0.00
4,793.0	0.00	0.00	4,740.0	576.4	-177.3	603.1	0.00	0.00	0.00
SHANNON									
4,800.0	0.00	0.00	4,747.0	576.4	-177.3	603.1	0.00	0.00	0.00
4,840.0	0.00	0.00	4,787.0	576.4	-177.3	603.1	0.00	0.00	0.00
4,880.0	0.00	0.00	4,827.0	576.4	-177.3	603.1	0.00	0.00	0.00
4,920.0	0.00	0.00	4,867.0	576.4	-177.3	603.1	0.00	0.00	0.00
4,960.0	0.00	0.00	4,907.0	576.4	-177.3	603.1	0.00	0.00	0.00
5,000.0	0.00	0.00	4,947.0	576.4	-177.3	603.1	0.00	0.00	0.00
5,040.0	0.00	0.00	4,987.0	576.4	-177.3	603.1	0.00	0.00	0.00
5,080.0	0.00	0.00	5,027.0	576.4	-177.3	603.1	0.00	0.00	0.00
5,120.0	0.00	0.00	5,067.0	576.4	-177.3	603.1	0.00	0.00	0.00
5,160.0	0.00	0.00	5,107.0	576.4	-177.3	603.1	0.00	0.00	0.00
5,200.0	0.00	0.00	5,147.0	576.4	-177.3	603.1	0.00	0.00	0.00
5,240.0	0.00	0.00	5,187.0	576.4	-177.3	603.1	0.00	0.00	0.00
5,280.0	0.00	0.00	5,227.0	576.4	-177.3	603.1	0.00	0.00	0.00
5,320.0	0.00	0.00	5,267.0	576.4	-177.3	603.1	0.00	0.00	0.00
5,360.0	0.00	0.00	5,307.0	576.4	-177.3	603.1	0.00	0.00	0.00
5,400.0	0.00	0.00	5,347.0	576.4	-177.3	603.1	0.00	0.00	0.00
5,440.0	0.00	0.00	5,387.0	576.4	-177.3	603.1	0.00	0.00	0.00
5,480.0	0.00	0.00	5,427.0	576.4	-177.3	603.1	0.00	0.00	0.00
5,520.0	0.00	0.00	5,467.0	576.4	-177.3	603.1	0.00	0.00	0.00
5,560.0	0.00	0.00	5,507.0	576.4	-177.3	603.1	0.00	0.00	0.00
5,600.0	0.00	0.00	5,547.0	576.4	-177.3	603.1	0.00	0.00	0.00
5,640.0	0.00	0.00	5,587.0	576.4	-177.3	603.1	0.00	0.00	0.00
5,680.0	0.00	0.00	5,627.0	576.4	-177.3	603.1	0.00	0.00	0.00
5,720.0	0.00	0.00	5,667.0	576.4	-177.3	603.1	0.00	0.00	0.00
5,760.0	0.00	0.00	5,707.0	576.4	-177.3	603.1	0.00	0.00	0.00
5,800.0	0.00	0.00	5,747.0	576.4	-177.3	603.1	0.00	0.00	0.00

Database:	Landmark	Local Co-ordinate Reference:	Well Schlotthauer 13-23
Company:	BAYSWATER EXPLORATION & PRODUCTION	TVD Reference:	WELL @ 4977.0ft (Original Well Elev)
Project:	SEC.23-T7N-R67W	MD Reference:	WELL @ 4977.0ft (Original Well Elev)
Site:	Schlotthauer 13-23 Pad Sec.23-T7N-R67W	North Reference:	True
Well:	Schlotthauer 13-23	Survey Calculation Method:	Minimum Curvature
Wellbore:	Wellbore #1		
Design:	Plan #1 (10-27-11)		

Planned Survey

Measured Depth (ft)	Inclination (°)	Azimuth (°)	Vertical Depth (ft)	+N/-S (ft)	+E/-W (ft)	Vertical Section (ft)	Dogleg Rate (°/100ft)	Build Rate (°/100ft)	Turn Rate (°/100ft)
5,840.0	0.00	0.00	5,787.0	576.4	-177.3	603.1	0.00	0.00	0.00
5,880.0	0.00	0.00	5,827.0	576.4	-177.3	603.1	0.00	0.00	0.00
5,920.0	0.00	0.00	5,867.0	576.4	-177.3	603.1	0.00	0.00	0.00
5,960.0	0.00	0.00	5,907.0	576.4	-177.3	603.1	0.00	0.00	0.00
6,000.0	0.00	0.00	5,947.0	576.4	-177.3	603.1	0.00	0.00	0.00
6,040.0	0.00	0.00	5,987.0	576.4	-177.3	603.1	0.00	0.00	0.00
6,080.0	0.00	0.00	6,027.0	576.4	-177.3	603.1	0.00	0.00	0.00
6,120.0	0.00	0.00	6,067.0	576.4	-177.3	603.1	0.00	0.00	0.00
6,160.0	0.00	0.00	6,107.0	576.4	-177.3	603.1	0.00	0.00	0.00
6,200.0	0.00	0.00	6,147.0	576.4	-177.3	603.1	0.00	0.00	0.00
6,240.0	0.00	0.00	6,187.0	576.4	-177.3	603.1	0.00	0.00	0.00
6,280.0	0.00	0.00	6,227.0	576.4	-177.3	603.1	0.00	0.00	0.00
6,320.0	0.00	0.00	6,267.0	576.4	-177.3	603.1	0.00	0.00	0.00
6,360.0	0.00	0.00	6,307.0	576.4	-177.3	603.1	0.00	0.00	0.00
6,400.0	0.00	0.00	6,347.0	576.4	-177.3	603.1	0.00	0.00	0.00
6,440.0	0.00	0.00	6,387.0	576.4	-177.3	603.1	0.00	0.00	0.00
6,480.0	0.00	0.00	6,427.0	576.4	-177.3	603.1	0.00	0.00	0.00
6,520.0	0.00	0.00	6,467.0	576.4	-177.3	603.1	0.00	0.00	0.00
6,560.0	0.00	0.00	6,507.0	576.4	-177.3	603.1	0.00	0.00	0.00
6,600.0	0.00	0.00	6,547.0	576.4	-177.3	603.1	0.00	0.00	0.00
6,640.0	0.00	0.00	6,587.0	576.4	-177.3	603.1	0.00	0.00	0.00
6,680.0	0.00	0.00	6,627.0	576.4	-177.3	603.1	0.00	0.00	0.00
6,720.0	0.00	0.00	6,667.0	576.4	-177.3	603.1	0.00	0.00	0.00
6,760.0	0.00	0.00	6,707.0	576.4	-177.3	603.1	0.00	0.00	0.00
6,800.0	0.00	0.00	6,747.0	576.4	-177.3	603.1	0.00	0.00	0.00
6,840.0	0.00	0.00	6,787.0	576.4	-177.3	603.1	0.00	0.00	0.00
6,880.0	0.00	0.00	6,827.0	576.4	-177.3	603.1	0.00	0.00	0.00
6,920.0	0.00	0.00	6,867.0	576.4	-177.3	603.1	0.00	0.00	0.00
6,960.0	0.00	0.00	6,907.0	576.4	-177.3	603.1	0.00	0.00	0.00
7,000.0	0.00	0.00	6,947.0	576.4	-177.3	603.1	0.00	0.00	0.00
7,035.0	0.00	0.00	6,982.0	576.4	-177.3	603.1	0.00	0.00	0.00
NIOBRARA - LEGAL BOX 400' X 400', 661'FSL & 662'FWL									
7,040.0	0.00	0.00	6,987.0	576.4	-177.3	603.1	0.00	0.00	0.00
7,080.0	0.00	0.00	7,027.0	576.4	-177.3	603.1	0.00	0.00	0.00
7,120.0	0.00	0.00	7,067.0	576.4	-177.3	603.1	0.00	0.00	0.00
7,160.0	0.00	0.00	7,107.0	576.4	-177.3	603.1	0.00	0.00	0.00
7,200.0	0.00	0.00	7,147.0	576.4	-177.3	603.1	0.00	0.00	0.00
7,240.0	0.00	0.00	7,187.0	576.4	-177.3	603.1	0.00	0.00	0.00
7,280.0	0.00	0.00	7,227.0	576.4	-177.3	603.1	0.00	0.00	0.00
7,307.0	0.00	0.00	7,254.0	576.4	-177.3	603.1	0.00	0.00	0.00
FT. HAYS									
7,320.0	0.00	0.00	7,267.0	576.4	-177.3	603.1	0.00	0.00	0.00
7,345.0	0.00	0.00	7,292.0	576.4	-177.3	603.1	0.00	0.00	0.00
CODELL									
7,360.0	0.00	0.00	7,307.0	576.4	-177.3	603.1	0.00	0.00	0.00
7,395.0	0.00	0.00	7,342.0	576.4	-177.3	603.1	0.00	0.00	0.00
GREENHORN									
7,400.0	0.00	0.00	7,347.0	576.4	-177.3	603.1	0.00	0.00	0.00
7,440.0	0.00	0.00	7,387.0	576.4	-177.3	603.1	0.00	0.00	0.00
7,479.0	0.00	0.00	7,426.0	576.4	-177.3	603.1	0.00	0.00	0.00
GRANEROS									
7,480.0	0.00	0.00	7,427.0	576.4	-177.3	603.1	0.00	0.00	0.00

Database:	Landmark	Local Co-ordinate Reference:	Well Schlotthauer 13-23
Company:	BAYSWATER EXPLORATION & PRODUCTION	TVD Reference:	WELL @ 4977.0ft (Original Well Elev)
Project:	SEC.23-T7N-R67W	MD Reference:	WELL @ 4977.0ft (Original Well Elev)
Site:	Schlotthauer 13-23 Pad Sec.23-T7N-R67W	North Reference:	True
Well:	Schlotthauer 13-23	Survey Calculation Method:	Minimum Curvature
Wellbore:	Wellbore #1		
Design:	Plan #1 (10-27-11)		

Planned Survey										
Measured Depth (ft)	Inclination (°)	Azimuth (°)	Vertical Depth (ft)	+N/-S (ft)	+E/-W (ft)	Vertical Section (ft)	Dogleg Rate (°/100ft)	Build Rate (°/100ft)	Turn Rate (°/100ft)	
7,520.0	0.00	0.00	7,467.0	576.4	-177.3	603.1	0.00	0.00	0.00	
7,560.0	0.00	0.00	7,507.0	576.4	-177.3	603.1	0.00	0.00	0.00	
7,568.0	0.00	0.00	7,515.0	576.4	-177.3	603.1	0.00	0.00	0.00	

Targets										
Target Name	Dip Angle (°)	Dip Dir. (°)	TVD (ft)	+N/-S (ft)	+E/-W (ft)	Northing (ft)	Easting (ft)	Latitude	Longitude	
- hit/miss target										
- Shape										
LEGAL BOX 400' X 400'	0.00	0.00	6,982.0	577.4	-176.3	1,445,373.94	3,175,744.86	40.554231	-104.867538	
- plan misses target center by 1.4ft at 7035.0ft MD (6982.0 TVD, 576.4 N, -177.3 E)										
- Rectangle (sides W400.0 H400.0 D533.0)										
TARGET BHL 660'FS	0.00	0.00	4,500.0	576.4	-177.3	1,445,372.92	3,175,743.88	40.554228	-104.867542	
- plan hits target center										
- Point										

Casing Points					
Measured Depth (ft)	Vertical Depth (ft)	Name	Casing Diameter (")	Hole Diameter (")	
550.0	550.0	8 5/8"	8-5/8	12-1/4	

Formations						
Measured Depth (ft)	Vertical Depth (ft)	Name	Lithology	Dip (°)	Dip Direction (°)	
3,653.6	3,610.0	PARKMAN		0.00		
4,463.0	4,410.0	SUSSEX		0.00		
4,793.0	4,740.0	SHANNON		0.00		
7,035.0	6,982.0	NIOBRARA		0.00		
7,307.0	7,254.0	FT. HAYS		0.00		
7,345.0	7,292.0	CODELL		0.00		
7,395.0	7,342.0	GREENHORN		0.00		
7,479.0	7,426.0	GRANEROS		0.00		



Directional

BAYSWATER EXPLORATION & PRODUCTION

SEC.23-T7N-R67W

Schlotthauer 13-23 Pad Sec.23-T7N-R67W

Schlotthauer 13-23

Wellbore #1

Plan #1 (10-27-11)

Anticollision Report

28 October, 2011

Company:	BAYSWATER EXPLORATION & PRODUCTION	Local Co-ordinate Reference:	Well Schlotthauer 13-23
Project:	SEC.23-T7N-R67W	TVD Reference:	WELL @ 4977.0ft (Original Well Elev)
Reference Site:	Schlotthauer 13-23 Pad Sec.23-T7N-R67W	MD Reference:	WELL @ 4977.0ft (Original Well Elev)
Site Error:	0.0ft	North Reference:	True
Reference Well:	Schlotthauer 13-23	Survey Calculation Method:	Minimum Curvature
Well Error:	0.0ft	Output errors are at	2.00 sigma
Reference Wellbore	Wellbore #1	Database:	Landmark
Reference Design:	Plan #1 (10-27-11)	Offset TVD Reference:	Offset Datum

Reference	Plan #1 (10-27-11)		
Filter type:	NO GLOBAL FILTER: Using user defined selection & filtering criteria		
Interpolation Method:	Stations	Error Model:	ISCWSA
Depth Range:	Unlimited	Scan Method:	Closest Approach 3D
Results Limited by:	Maximum center-center distance of 10,000.0ft	Error Surface:	Elliptical Conic
Warning Levels Evaluated at:	2.00 Sigma		

Survey Tool Program	Date 10/28/2011			
From (ft)	To (ft)	Survey (Wellbore)	Tool Name	Description
0.0	7,568.0	Plan #1 (10-27-11) (Wellbore #1)	MWD	MWD - Standard

Summary						
Site Name	Reference Measured Depth (ft)	Offset Measured Depth (ft)	Distance Between Centres (ft)	Distance Between Ellipses (ft)	Separation Factor	Warning
Offset Well - Wellbore - Design						
Schlotthauer 13-23 Pad Sec.23-T7N-R67W						
Schlotthauer 4-26 - Wellbore #1 - Plan #1 (10-27-11)	548.4	548.5	14.5	12.3	6.598	CC, ES
Schlotthauer 4-26 - Wellbore #1 - Plan #1 (10-27-11)	600.0	599.9	14.8	12.4	6.148	SF

Offset Design Schlotthauer 13-23 Pad Sec.23-T7N-R67W - Schlotthauer 4-26 - Wellbore #1 - Plan #1 (10-27-11)													Offset Site Error: 0.0 ft
Survey Program: 0-MWD													Offset Well Error: 0.0 ft
Reference Measured Depth (ft)	Vertical Depth (ft)	Offset Measured Depth (ft)	Vertical Depth (ft)	Semi Major Axis		Highside Toolface (°)	Offset Wellbore Centre +N/-S (ft)	+E/-W (ft)	Distance		Minimum Separation (ft)	Separation Factor	Warning
				Reference (ft)	Offset (ft)				Between Centres (ft)	Between Ellipses (ft)			
0.0	0.0	0.0	0.0	0.0	0.0	89.91	0.0	15.0	15.0	15.0	0.00	N/A	
100.0	100.0	100.0	100.0	0.1	0.1	89.91	0.0	15.0	15.0	14.8	0.22	66.764	
200.0	200.0	200.0	200.0	0.3	0.3	89.91	0.0	15.0	15.0	14.3	0.67	22.255	
300.0	300.0	300.0	300.0	0.6	0.6	89.91	0.0	15.0	15.0	13.9	1.12	13.353	
400.0	400.0	400.0	400.0	0.8	0.8	89.91	0.0	15.0	15.0	13.4	1.57	9.538	
500.0	500.0	500.1	500.1	1.0	1.0	96.53	-1.7	14.6	14.7	12.7	2.00	7.341	
548.4	548.4	548.5	548.4	1.1	1.1	104.77	-3.7	14.0	14.5	12.3	2.20	6.598	CC, ES
600.0	600.0	599.9	599.8	1.2	1.2	116.93	-6.7	13.2	14.8	12.4	2.41	6.148	SF
700.0	700.0	699.3	698.8	1.5	1.4	143.83	-15.1	11.0	18.7	15.9	2.85	6.562	
750.0	750.0	748.7	747.9	1.6	1.5	154.88	-20.5	9.6	22.7	19.6	3.08	7.383	
800.0	800.0	797.9	796.6	1.7	1.7	-179.56	-26.7	8.0	28.5	25.1	3.31	8.593	
900.0	899.9	895.0	892.6	1.9	1.9	-169.50	-41.2	4.1	45.9	42.1	3.78	12.152	
1,000.0	999.7	991.3	987.2	2.1	2.3	-164.98	-58.3	-0.4	69.9	65.6	4.24	16.470	
1,100.0	1,099.1	1,087.4	1,081.6	2.4	2.6	-163.23	-75.6	-4.9	97.6	92.9	4.69	20.791	
1,200.0	1,198.2	1,182.5	1,175.0	2.6	3.0	-162.64	-92.7	-9.4	128.5	123.4	5.14	24.986	
1,280.7	1,277.7	1,258.5	1,249.7	2.9	3.3	-162.56	-106.4	-13.0	155.8	150.3	5.51	28.294	
1,300.0	1,296.6	1,276.5	1,267.4	2.9	3.4	-162.60	-109.6	-13.9	162.5	156.9	5.59	29.048	
1,400.0	1,394.9	1,370.2	1,359.4	3.3	3.8	-162.80	-126.5	-18.3	197.6	191.5	6.06	32.586	
1,500.0	1,493.2	1,463.8	1,451.5	3.6	4.1	-162.94	-143.3	-22.8	232.6	226.1	6.54	35.543	
1,600.0	1,591.5	1,557.5	1,543.5	4.0	4.5	-163.04	-160.2	-27.2	267.7	260.6	7.02	38.104	
1,700.0	1,689.8	1,651.1	1,635.5	4.3	4.9	-163.12	-177.1	-31.7	302.7	295.2	7.51	40.296	
1,800.0	1,788.1	1,744.8	1,727.5	4.7	5.3	-163.18	-193.9	-36.1	337.7	329.7	8.00	42.199	
1,900.0	1,886.4	1,838.4	1,819.5	5.1	5.7	-163.23	-210.8	-40.6	372.8	364.3	8.50	43.864	
2,000.0	1,984.7	1,932.1	1,911.6	5.5	6.1	-163.27	-227.6	-45.0	407.8	398.8	9.00	45.331	

CC - Min centre to center distance or convergent point, SF - min separation factor, ES - min ellipse separation

Company:	BAYSWATER EXPLORATION & PRODUCTION	Local Co-ordinate Reference:	Well Schlotthauer 13-23
Project:	SEC.23-T7N-R67W	TVD Reference:	WELL @ 4977.0ft (Original Well Elev)
Reference Site:	Schlotthauer 13-23 Pad Sec.23-T7N-R67W	MD Reference:	WELL @ 4977.0ft (Original Well Elev)
Site Error:	0.0ft	North Reference:	True
Reference Well:	Schlotthauer 13-23	Survey Calculation Method:	Minimum Curvature
Well Error:	0.0ft	Output errors are at	2.00 sigma
Reference Wellbore	Wellbore #1	Database:	Landmark
Reference Design:	Plan #1 (10-27-11)	Offset TVD Reference:	Offset Datum

Offset Design Schlotthauer 13-23 Pad Sec.23-T7N-R67W - Schlotthauer 4-26 - Wellbore #1 - Plan #1 (10-27-11)													Offset Site Error: 0.0ft
Survey Program: 0-MWD													Offset Well Error: 0.0ft
Reference	Offset	Semi Major Axis		Distance		Warning							
Measured Depth (ft)	Vertical Depth (ft)	Measured Depth (ft)	Vertical Depth (ft)	Reference (ft)	Offset (ft)	Highside Toolface (°)	Offset Wellbore Centre +N/-S (ft)	+E/-W (ft)	Between Centres (ft)	Between Ellipses (ft)	Minimum Separation (ft)	Separation Factor	
2,100.0	2,082.9	2,025.8	2,003.6	5.9	6.5	-163.31	-244.5	-49.5	442.9	433.4	9.50	46.633	
2,200.0	2,181.2	2,119.4	2,095.6	6.2	6.8	-163.34	-261.4	-53.9	477.9	467.9	10.00	47.794	
2,300.0	2,279.5	2,213.1	2,187.6	6.6	7.2	-163.36	-278.2	-58.3	513.0	502.5	10.50	48.837	
2,400.0	2,377.8	2,306.7	2,279.6	7.0	7.6	-163.38	-295.1	-62.8	548.0	537.0	11.01	49.777	
2,500.0	2,476.1	2,400.4	2,371.7	7.4	8.0	-163.40	-312.0	-67.2	583.1	571.6	11.52	50.629	
2,600.0	2,574.4	2,494.0	2,463.7	7.8	8.4	-163.42	-328.8	-71.7	618.1	606.1	12.02	51.404	
2,700.0	2,672.7	2,587.7	2,555.7	8.2	8.8	-163.44	-345.7	-76.1	653.2	640.6	12.53	52.111	
2,800.0	2,771.0	2,681.4	2,647.7	8.6	9.2	-163.45	-362.5	-80.6	688.2	675.2	13.04	52.760	
2,900.0	2,869.3	2,775.0	2,739.7	9.0	9.6	-163.46	-379.4	-85.0	723.3	709.7	13.56	53.357	
3,000.0	2,967.5	2,868.7	2,831.8	9.4	10.0	-163.48	-396.3	-89.5	758.3	744.2	14.07	53.907	
3,100.0	3,065.8	2,962.3	2,923.8	9.8	10.4	-163.49	-413.1	-93.9	793.3	778.8	14.58	54.417	
3,200.0	3,164.1	3,056.0	3,015.8	10.2	10.8	-163.50	-430.0	-98.3	828.4	813.3	15.09	54.889	
3,300.0	3,262.4	3,149.6	3,107.8	10.6	11.2	-163.50	-446.8	-102.8	863.4	847.8	15.61	55.329	
3,400.0	3,360.7	3,243.3	3,199.8	11.0	11.6	-163.51	-463.7	-107.2	898.5	882.4	16.12	55.738	
3,500.0	3,459.0	3,337.0	3,291.9	11.4	12.0	-163.52	-480.6	-111.7	933.5	916.9	16.63	56.121	
3,600.0	3,557.3	3,430.6	3,383.9	11.8	12.3	-163.53	-497.4	-116.1	968.6	951.4	17.15	56.479	
3,700.0	3,655.6	3,524.3	3,475.9	12.2	12.7	-163.53	-514.3	-120.6	1,003.6	986.0	17.66	56.816	
3,800.0	3,753.9	3,617.9	3,567.9	12.7	13.1	-163.54	-531.2	-125.0	1,038.7	1,020.5	18.18	57.131	
3,900.0	3,852.1	3,711.6	3,659.9	13.1	13.5	-163.55	-548.0	-129.5	1,073.7	1,055.0	18.70	57.429	
4,000.0	3,950.4	3,805.2	3,752.0	13.5	13.9	-163.55	-564.9	-133.9	1,108.8	1,089.6	19.21	57.709	
4,022.2	3,972.3	3,826.1	3,772.4	13.6	14.0	-163.55	-568.6	-134.9	1,116.6	1,097.2	19.33	57.769	
4,100.0	4,048.9	3,899.3	3,844.3	13.8	14.3	-163.70	-581.8	-138.4	1,142.9	1,123.1	19.78	57.776	
4,200.0	4,147.9	3,994.3	3,937.7	14.1	14.7	-163.82	-598.9	-142.9	1,173.9	1,153.6	20.31	57.789	
4,300.0	4,247.4	4,090.3	4,032.1	14.3	15.1	-163.88	-616.2	-147.4	1,201.7	1,180.9	20.82	57.714	
4,400.0	4,347.1	4,187.2	4,127.3	14.5	15.5	-163.87	-633.6	-152.0	1,226.3	1,204.9	21.30	57.562	
4,500.0	4,447.0	4,284.8	4,223.2	14.7	16.0	-163.80	-651.2	-156.7	1,247.6	1,225.8	21.76	57.342	
4,553.0	4,500.0	4,336.8	4,274.2	14.8	16.2	179.16	-660.6	-159.1	1,257.5	1,235.6	21.98	57.200	
4,600.0	4,547.0	4,383.0	4,319.6	14.8	16.4	179.27	-668.9	-161.3	1,266.0	1,243.8	22.19	57.050	
4,700.0	4,647.0	4,481.3	4,416.1	15.0	16.8	179.49	-686.6	-166.0	1,284.0	1,261.3	22.65	56.687	
4,800.0	4,747.0	4,576.2	4,509.0	15.1	17.3	179.77	-709.7	-172.1	1,301.3	1,278.1	23.18	56.147	
4,900.0	4,847.0	4,673.8	4,605.1	15.3	17.7	179.98	-731.5	-177.8	1,313.6	1,289.8	23.72	55.368	
5,000.0	4,947.0	4,773.5	4,704.4	15.4	18.0	179.85	-742.7	-180.8	1,319.8	1,295.6	24.24	54.449	
5,100.0	5,047.0	4,873.2	4,804.0	15.6	18.2	179.83	-744.3	-181.2	1,320.7	1,296.0	24.68	53.502	
5,200.0	5,147.0	4,973.2	4,904.0	15.7	18.3	179.83	-744.3	-181.2	1,320.7	1,295.6	25.04	52.736	
5,300.0	5,247.0	5,073.2	5,004.0	15.9	18.4	179.83	-744.3	-181.2	1,320.7	1,295.3	25.40	51.986	
5,400.0	5,347.0	5,173.2	5,104.0	16.0	18.5	179.83	-744.3	-181.2	1,320.7	1,294.9	25.77	51.251	
5,500.0	5,447.0	5,273.2	5,204.0	16.2	18.6	179.83	-744.3	-181.2	1,320.7	1,294.5	26.14	50.532	
5,600.0	5,547.0	5,373.2	5,304.0	16.4	18.7	179.83	-744.3	-181.2	1,320.7	1,294.2	26.50	49.828	
5,700.0	5,647.0	5,473.2	5,404.0	16.5	18.8	179.83	-744.3	-181.2	1,320.7	1,293.8	26.88	49.139	
5,800.0	5,747.0	5,573.2	5,504.0	16.7	19.0	179.83	-744.3	-181.2	1,320.7	1,293.4	27.25	48.465	
5,900.0	5,847.0	5,673.2	5,604.0	16.8	19.1	179.83	-744.3	-181.2	1,320.7	1,293.0	27.63	47.805	
6,000.0	5,947.0	5,773.2	5,704.0	17.0	19.2	179.83	-744.3	-181.2	1,320.7	1,292.7	28.00	47.159	
6,100.0	6,047.0	5,873.2	5,804.0	17.2	19.3	179.83	-744.3	-181.2	1,320.7	1,292.3	28.38	46.528	
6,200.0	6,147.0	5,973.2	5,904.0	17.3	19.4	179.83	-744.3	-181.2	1,320.7	1,291.9	28.77	45.910	
6,300.0	6,247.0	6,073.2	6,004.0	17.5	19.6	179.83	-744.3	-181.2	1,320.7	1,291.5	29.15	45.305	
6,400.0	6,347.0	6,173.2	6,104.0	17.7	19.7	179.83	-744.3	-181.2	1,320.7	1,291.1	29.54	44.713	
6,500.0	6,447.0	6,273.2	6,204.0	17.9	19.8	179.83	-744.3	-181.2	1,320.7	1,290.7	29.92	44.133	
6,600.0	6,547.0	6,373.2	6,304.0	18.0	20.0	179.83	-744.3	-181.2	1,320.7	1,290.4	30.31	43.567	
6,700.0	6,647.0	6,473.2	6,404.0	18.2	20.1	179.83	-744.3	-181.2	1,320.7	1,290.0	30.70	43.012	
6,800.0	6,747.0	6,573.2	6,504.0	18.4	20.2	179.83	-744.3	-181.2	1,320.7	1,289.6	31.10	42.469	
6,900.0	6,847.0	6,673.2	6,604.0	18.6	20.4	179.83	-744.3	-181.2	1,320.7	1,289.2	31.49	41.938	

CC - Min centre to center distance or convergent point, SF - min separation factor, ES - min ellipse separation

Company:	BAYSWATER EXPLORATION & PRODUCTION	Local Co-ordinate Reference:	Well Schlotthauer 13-23
Project:	SEC.23-T7N-R67W	TVD Reference:	WELL @ 4977.0ft (Original Well Elev)
Reference Site:	Schlotthauer 13-23 Pad Sec.23-T7N-R67W	MD Reference:	WELL @ 4977.0ft (Original Well Elev)
Site Error:	0.0ft	North Reference:	True
Reference Well:	Schlotthauer 13-23	Survey Calculation Method:	Minimum Curvature
Well Error:	0.0ft	Output errors are at	2.00 sigma
Reference Wellbore	Wellbore #1	Database:	Landmark
Reference Design:	Plan #1 (10-27-11)	Offset TVD Reference:	Offset Datum

Offset Design Schlotthauer 13-23 Pad Sec.23-T7N-R67W - Schlotthauer 4-26 - Wellbore #1 - Plan #1 (10-27-11)													Offset Site Error: 0.0 ft	
Survey Program: 0-MWD													Offset Well Error: 0.0 ft	
Reference		Offset		Semi Major Axis			Distance							Warning
Measured Depth (ft)	Vertical Depth (ft)	Measured Depth (ft)	Vertical Depth (ft)	Reference (ft)	Offset (ft)	Highside Toolface (°)	Offset Wellbore Centre +N/-S (ft)	+E/-W (ft)	Between Centres (ft)	Between Ellipses (ft)	Minimum Separation (ft)	Separation Factor		
7,000.0	6,947.0	7,016.2	6,947.0	18.7	20.5	-179.83	-744.3	-181.2	1,320.7	1,288.8	31.89	41.418		
7,100.0	7,047.0	7,116.2	7,047.0	18.9	20.6	-179.83	-744.3	-181.2	1,320.7	1,288.4	32.28	40.908		
7,200.0	7,147.0	7,216.2	7,147.0	19.1	20.8	-179.83	-744.3	-181.2	1,320.7	1,288.0	32.68	40.410		
7,300.0	7,247.0	7,316.2	7,247.0	19.3	20.9	-179.83	-744.3	-181.2	1,320.7	1,287.6	33.08	39.922		
7,400.0	7,347.0	7,416.2	7,347.0	19.5	21.1	-179.83	-744.3	-181.2	1,320.7	1,287.2	33.48	39.444		
7,500.0	7,447.0	7,516.2	7,447.0	19.6	21.2	-179.83	-744.3	-181.2	1,320.7	1,286.8	33.88	38.976		
7,568.0	7,515.0	7,584.1	7,515.0	19.8	21.3	-179.83	-744.3	-181.2	1,320.7	1,286.5	34.16	38.664		

Company:	BAYSWATER EXPLORATION & PRODUCTION	Local Co-ordinate Reference:	Well Schlotthauer 13-23
Project:	SEC.23-T7N-R67W	TVD Reference:	WELL @ 4977.0ft (Original Well Elev)
Reference Site:	Schlotthauer 13-23 Pad Sec.23-T7N-R67W	MD Reference:	WELL @ 4977.0ft (Original Well Elev)
Site Error:	0.0ft	North Reference:	True
Reference Well:	Schlotthauer 13-23	Survey Calculation Method:	Minimum Curvature
Well Error:	0.0ft	Output errors are at	2.00 sigma
Reference Wellbore	Wellbore #1	Database:	Landmark
Reference Design:	Plan #1 (10-27-11)	Offset TVD Reference:	Offset Datum

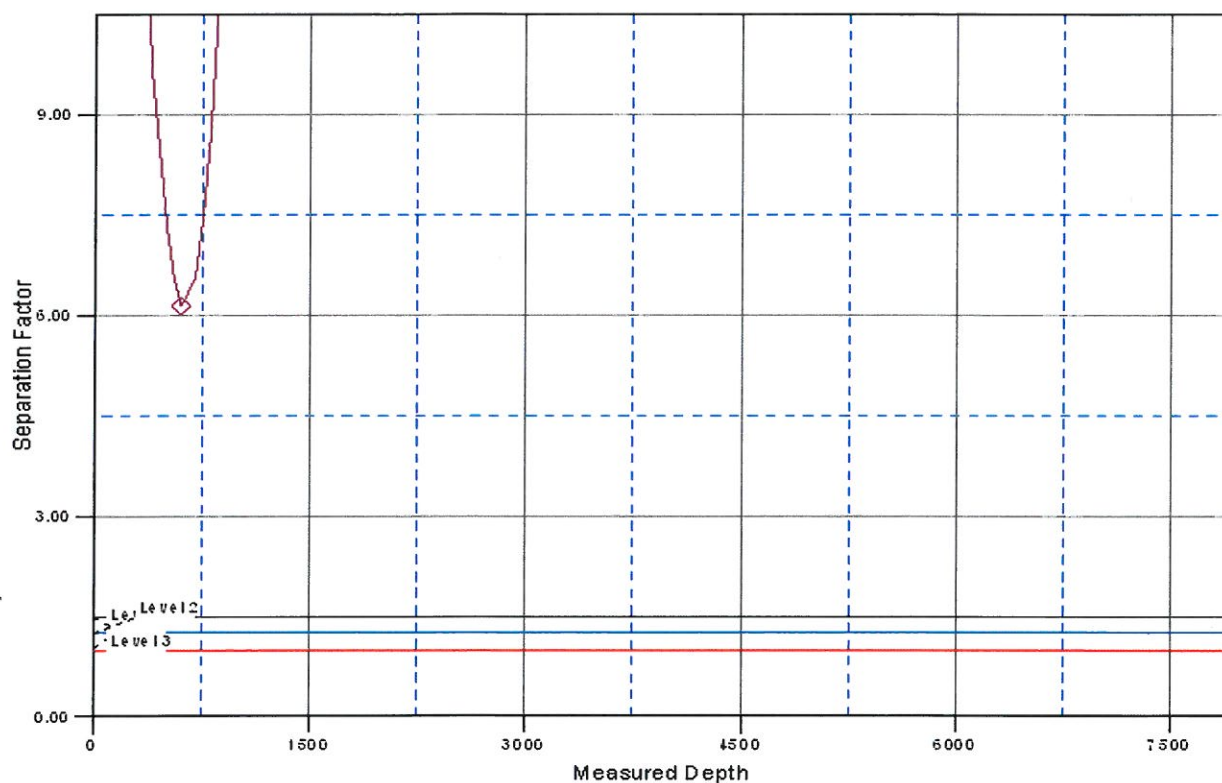
Reference Depths are relative to WELL @ 4977.0ft (Original Well Elev) Coordinates are relative to: Schlotthauer 13-23
 Offset Depths are relative to Offset Datum Coordinate System is US State Plane 1983, Colorado Northern Zone
 Central Meridian is -105.500000 ° Grid Convergence at Surface is: 0.41°



Company:	BAYSWATER EXPLORATION & PRODUCTION	Local Co-ordinate Reference:	Well Schlotthauer 13-23
Project:	SEC.23-T7N-R67W	TVD Reference:	WELL @ 4977.0ft (Original Well Elev)
Reference Site:	Schlotthauer 13-23 Pad Sec.23-T7N-R67W	MD Reference:	WELL @ 4977.0ft (Original Well Elev)
Site Error:	0.0ft	North Reference:	True
Reference Well:	Schlotthauer 13-23	Survey Calculation Method:	Minimum Curvature
Well Error:	0.0ft	Output errors are at	2.00 sigma
Reference Wellbore	Wellbore #1	Database:	Landmark
Reference Design:	Plan #1 (10-27-11)	Offset TVD Reference:	Offset Datum

Reference Depths are relative to WELL @ 4977.0ft (Original Well Elev) Coordinates are relative to: Schlotthauer 13-23
 Offset Depths are relative to Offset Datum Coordinate System is US State Plane 1983, Colorado Northern Zone
 Central Meridian is -105.500000 ° Grid Convergence at Surface is: 0.41°

Separation Factor Plot



LEGEND

 Schlotthauer 4-26, Wellbore #1, Plan #1 (10-27-11) VD

Surface Location: Schlotthauer 13-23 Pad Sec.23-T7N-R67W

North American Datum 1983 , US State Plane 1983 Colorado Northern Zone
Ground Elevation: 4966.0
+N/-S +E/-W Northing Easting Latitude Longitude Slot
0.0 0.0444797.82175925.27 40.5526404.866904
Design Version: Plan #1 (10-27-11)

