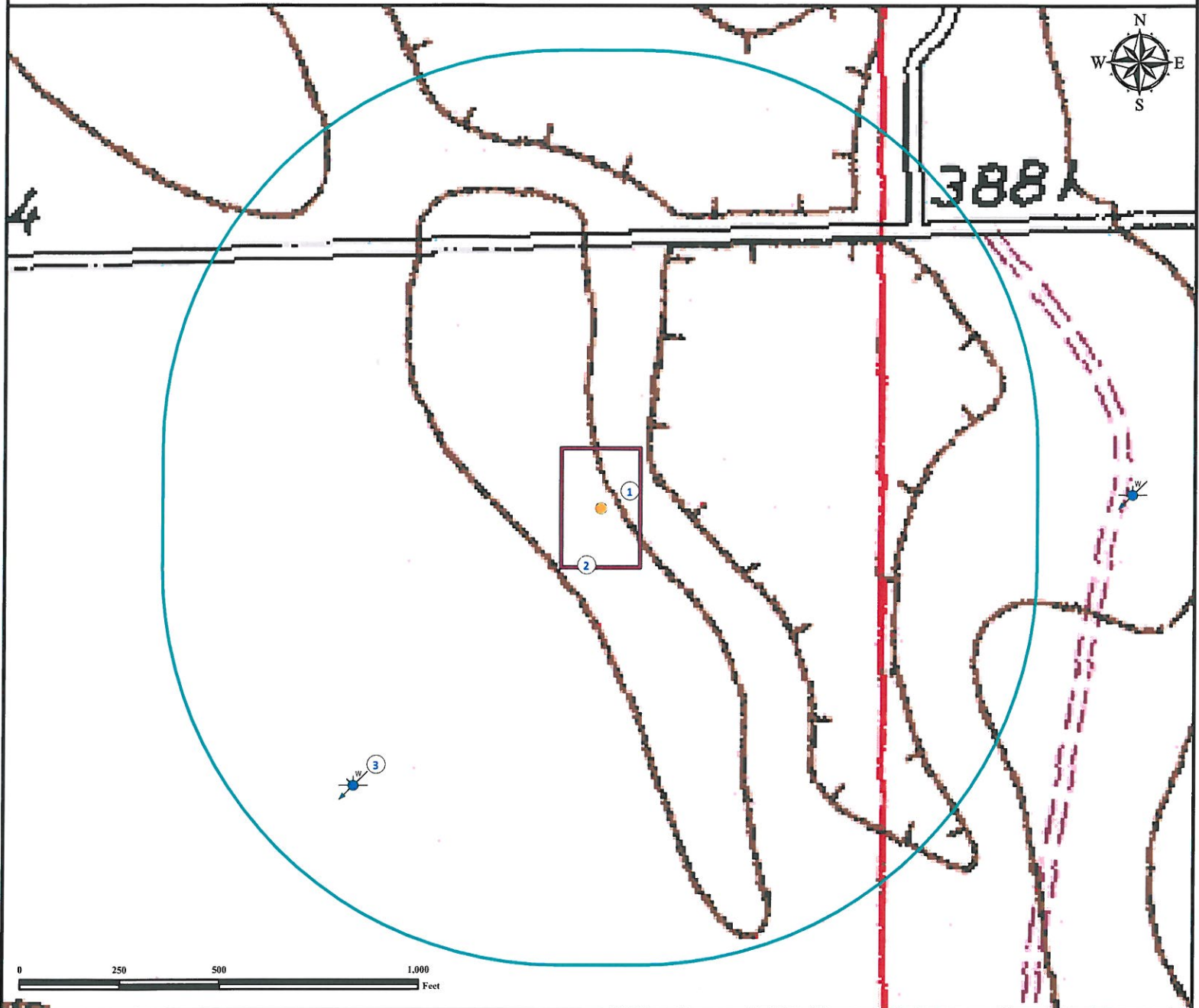


Hydrology Map

YCO 13-10

NE¼ NE¼ SECTION 10, TOWNSHIP 4 NORTH, RANGE 46 WEST OF THE 6TH PRINCIPAL MERIDIAN



1. Proposed well YCO 13-10.
2. Operational Disturbance Area.
3. Water well (#19177) is 930' SW.

Legend

- Proposed Well
- Disturbance Area
- Water Well
- 1000' Radius

Reference Location

** All Measurements are Made from Reference Well YCO 13-10 **

Lat: 40.334497° Long:-102.492289° (NAD83)
Elevation: 3886 Feet



Use our resources to find yours!
www.petro-fs.com
(303) 928-7128

Field Date: 10/23/2011
Drafting Date: 10/31/2011
Drafter: DMM
Checked By: BHF

Data Sources:
- TOPO courtesy USGS

Prepared for: **PETRON
DEVELOPMENT
COMPANY**