

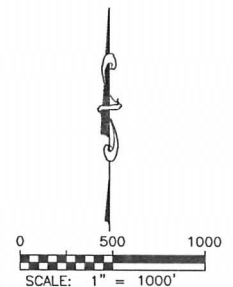
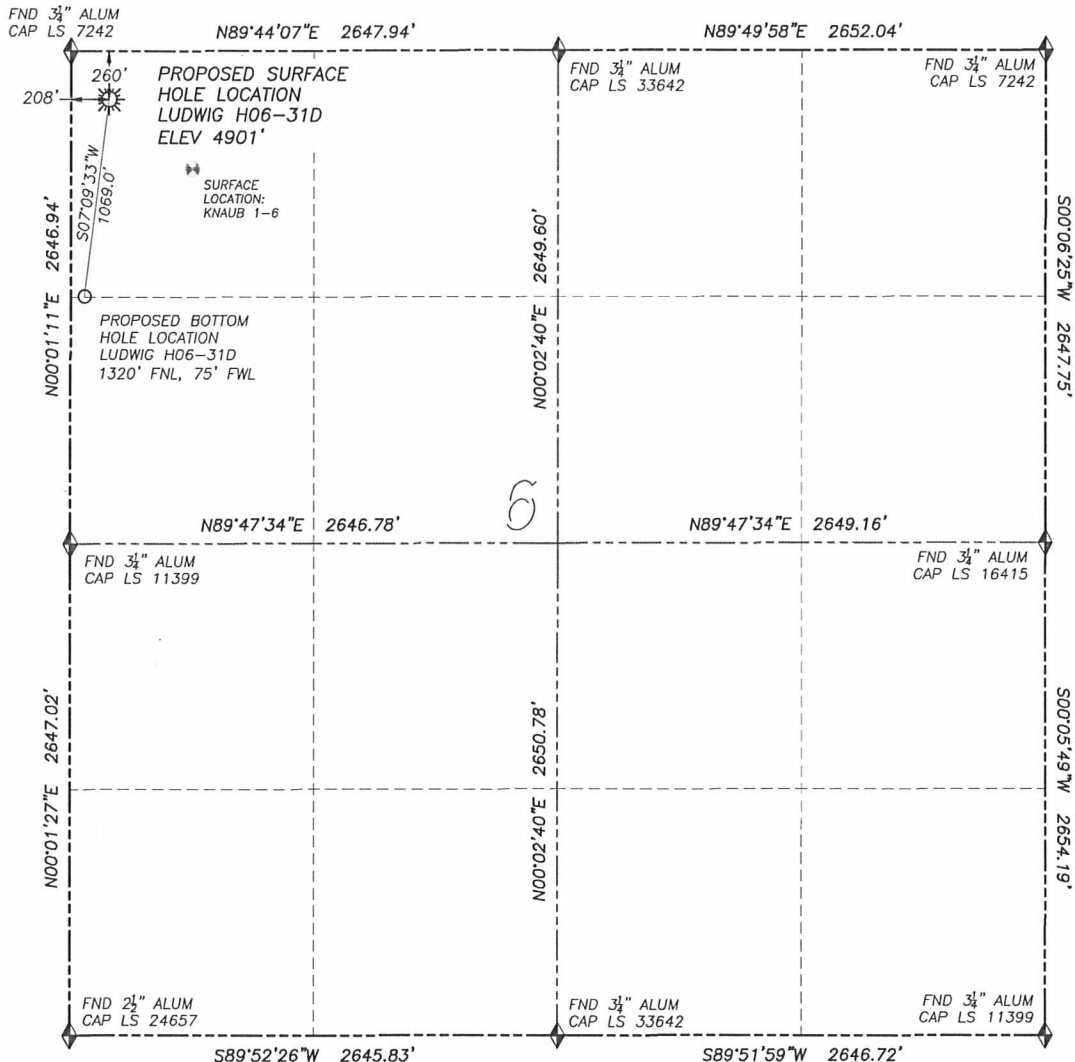
DALEY LAND SURVEYING, INC.

PARKER, CO. 80134

303 953 9841

WELL LOCATION CERTIFICATE LUDWIG H06-31D

SECTION 6, TOWNSHIP 3 NORTH, RANGE 65 WEST OF THE 6TH PRINCIPAL MERIDIAN

**LEGEND**

- ◆ FOUND MONUMENT AS DESCRIBED
- ☀ PROPOSED WELL
- ⊙ EXISTING WELL
- BOTTOM HOLE
- ⊘ ABANDONED WELL

NAD 83 LATITUDE AND LONGITUDE**LUDWIG H06-31D SURFACE HOLE:**

LATITUDE: N40.26093°
 LONGITUDE: W104.71491°
 ELEVATION: 4901'
 FOOTAGE: 260' FNL, 208' FWL
 PDOP: 2.0
 QTR/QTR: NW4/NW4
 PROP LINE: 208' WEST

BOTTOM HOLE:

LATITUDE: N40.25802°
 LONGITUDE: W104.71539°
 FOOTAGE: 1320' FNL, 75' FWL

NEAREST EXISTING WELL:

KNAUB 1-6 SURFACE HOLE
 LATITUDE: N40.25991°
 LONGITUDE: W104.71328°
 ELEVATION: 4914'
 588' SOUTHEAST

IN ACCORDANCE WITH A REQUEST FROM CJ PIETRI OF NOBLE ENERGY INC., DALEY LAND SURVEYING, INC. HAS DETERMINED THE SURFACE LOCATION OF THE LUDWIG H06-31D WELL TO BE 260' FNL, 208' FWL, AS MEASURED AT NINETY (90) DEGREES FROM THE SECTION LINES OF SECTION 6, TOWNSHIP 3 NORTH, RANGE 65 WEST OF THE 6TH PRINCIPAL MERIDIAN, WELD COUNTY, COLORADO. THE BOTTOM HOLE LOCATION, PROVIDED BY THE CLIENT IS TO BE 1320' FNL, 75' FWL.

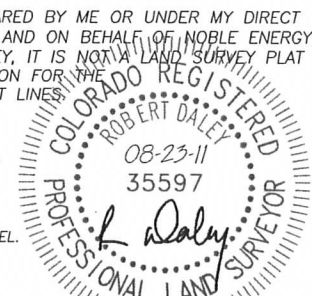
I HEREBY CERTIFY THAT THIS WELL LOCATION CERTIFICATE WAS PREPARED BY ME OR UNDER MY DIRECT SUPERVISION, THAT THE WORK WAS COMPLETED ON 8/22/2011 FOR AND ON BEHALF OF NOBLE ENERGY, INC., AND THAT THIS MAP DOES NOT REPRESENT A BOUNDARY SURVEY, IT IS NOT A LAND SURVEY PLAT OR AN IMPROVEMENT SURVEY PLAT AND IT IS NOT TO BE RELIED UPON FOR THE ESTABLISHMENT OF FENCE, BUILDING OR OTHER FUTURE IMPROVEMENT LINES.

NOTES:

- 1) BEARINGS FOR THIS MAP ARE ASSUMED AND BASED UPON GPS OBSERVATIONS MADE BETWEEN MONUMENTS LOCATED AT THE NORTHWEST CORNER AND WEST QUARTER CORNER OF SECTION 6, T.3N., R.65W.
- 2) HORIZONTAL DATUM IS NAD83.
- 3) VERTICAL DATUM IS NAVD88. ELEVATIONS ARE DERIVED FROM GPS OBSERVATIONS PROCESSED THROUGH OPUS, UTILIZING THE GEOID09 MODEL.
- 4) SEE LOCATION DRAWING FOR VISIBLE IMPROVEMENTS WITHIN 600' OF PROPOSED SURFACE HOLE LOCATION.
- 5) SURFACE USE: NON-AGRICULTURAL.

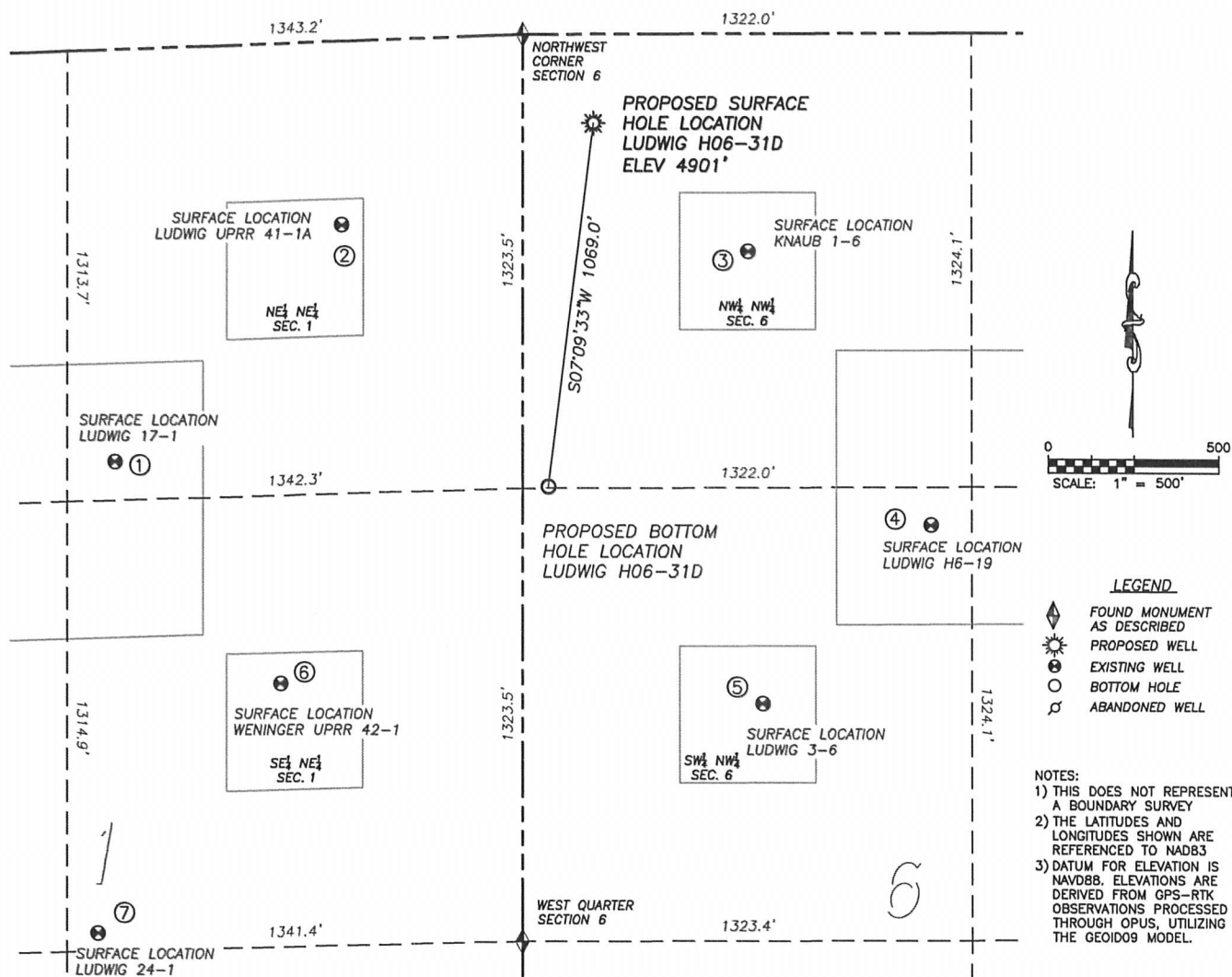
NOTICE: According to Colorado law you MUST commence any legal action based upon any defect in this W.L.C. within three years after you first discover such defect. In no event may any action based upon any such defect in this W.L.C. be commenced more than ten years from the date of the certification shown herein.

FOR AND ON BEHALF OF
DALEY LAND SURVEYING INC.,
Robert Daley, PLS 35597



SITE SKETCH LUDWIG H06-31D

SECTION 6, TOWNSHIP 3 NORTH, RANGE 65 WEST OF THE 6TH PRINCIPAL MERIDIAN



①

LUDWIG 17-1

NE/NE SEC. 1
1200' FNL, 1202' FEL
1279' W OF PROPOSED
BOTTOM HOLE LOCATION
LAT. N40.25822°
LONG. W104.71996°
EL: 4901'
PDOP 1.6

②

LUDWIG UPRR 41-1A

NE/NE SEC. 1
537' FNL, 535' FEL
976' NW OF PROPOSED
BOTTOM HOLE LOCATION
LAT. N40.26011°
LONG. W104.71757°
EL: 4896'
PDOP 2.2

③

KNAUB 1-6

NW/NW SEC. 6
634' FNL, 663' FWL
905' NE OF PROPOSED
BOTTOM HOLE LOCATION
LAT. N40.25991°
LONG. W104.71328°
EL: 4914'
PDOP 1.9

④

LUDWIG H6-19

SW/NW SEC. 6
1435' FNL, 1202' FWL
1132' E OF PROPOSED
BOTTOM HOLE LOCATION
LAT. N40.25772°
LONG. W104.71135°
EL: 4950'
PDOP 1.6

⑤

LUDWIG 3-6

SW/NW SEC. 6
1954' FNL, 706' FWL
892' SE OF PROPOSED
BOTTOM HOLE LOCATION
LAT. N40.25630°
LONG. W104.71313°
EL: 4947'
PDOP 2.3

⑥

WENINGER UPRR 42-1

SE/NE SEC. 1
1867' FNL, 714' FEL
976' SW OF PROPOSED
BOTTOM HOLE LOCATION
LAT. N40.25644°
LONG. W104.71821°
EL: 4930'
PDOP 1.7

⑦

LUDWIG 24-1

SE/NE SEC. 1
2575' FNL, 1250' FEL
1850' SW OF PROPOSED
BOTTOM HOLE LOCATION
LAT. N40.25444°
LONG. W104.72013°
EL: 4929'
PDOP 1.6

