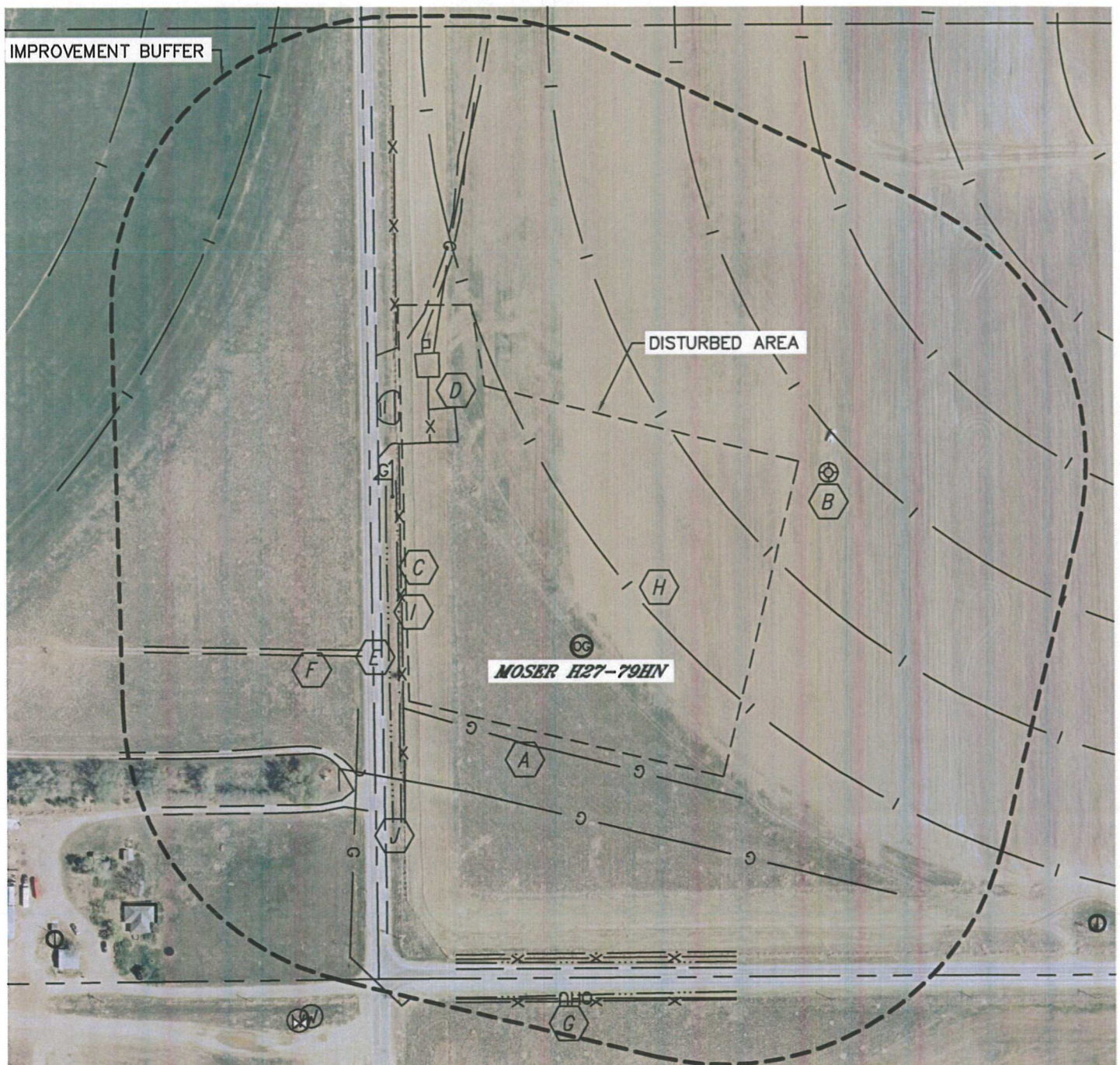


LOCATION DRAWING

MOSER H27-79HN

SECTION: 22
TOWNSHIP: 3N
RANGE: 65W



IMPROVEMENTS:

- | | |
|--|---|
| A GAS LINE 150' S, 233' S, 323' SW, 456' NW
GAS MARKER 336' NW | F FIELD ROAD 307' W, 363' & 399' SW, 479' NW |
| B EX. WELL (FRANK 22-33) 420' NE | G ABOVE GROUND UTILITY 489' S |
| C FENCE 245' W, 433' S, 493' S | H PIVOT TRACK 103', 280', 457', 635' NE |
| D EX. PRODUCTION EQUIPMENT (NOBLE)
332' NW, 465' NW | I DITCH 255' W, 427' S |
| E PUBLIC ROAD 279' W (CR 43), 449' S (CR 30) | J BARROW DITCH 269' W, 439' & 484' S |

NEAREST: BUILDING 694' SW, PUBLIC ROAD (CR 43) 279' W,
ABOVE GROUND UTILITY 489' S, RAILROAD 5280'+, PROPERTY LINE 291' W

