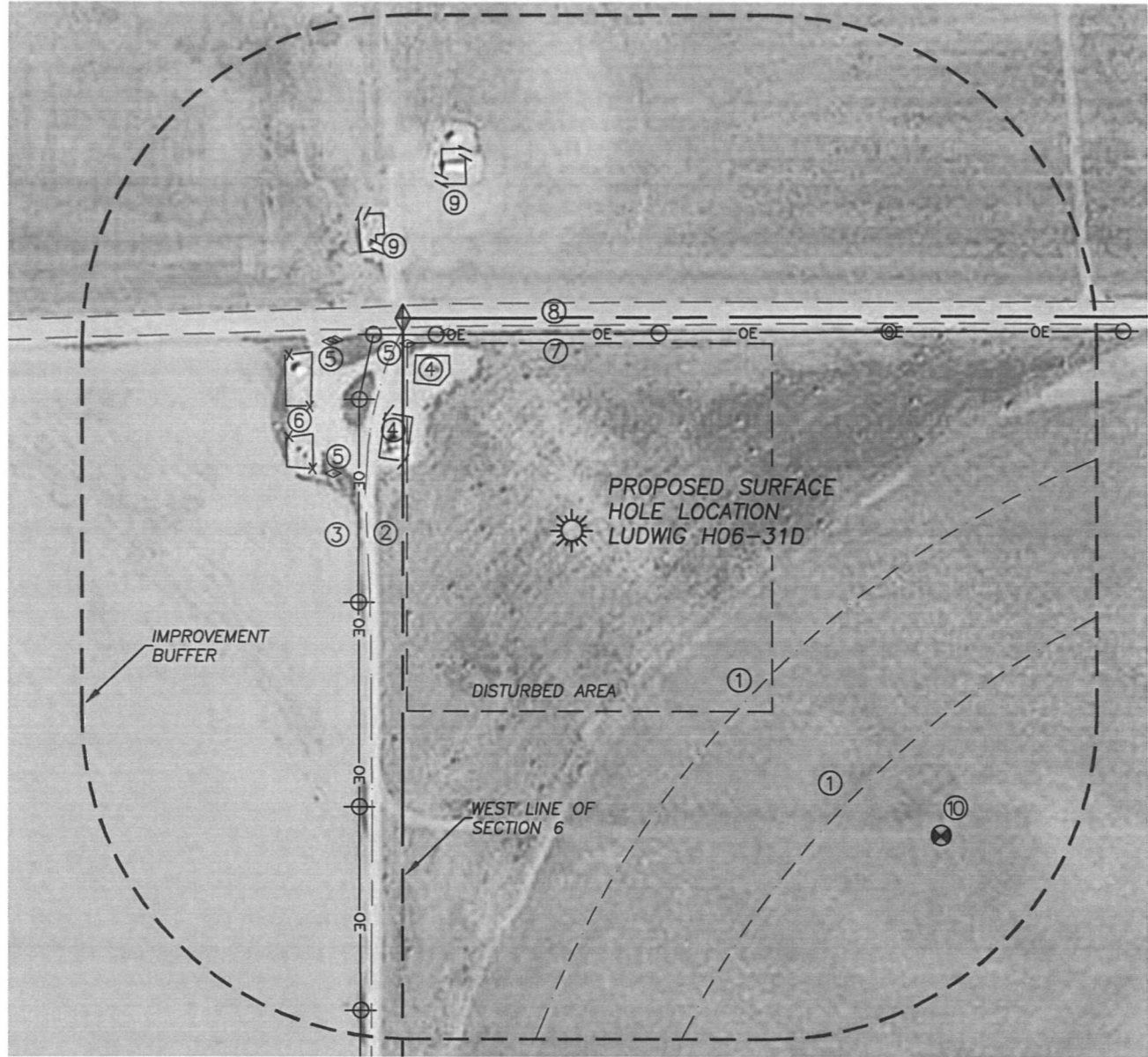


LOCATION DRAWING LUDWIG H06-31D

SECTION 6, TOWNSHIP 3 NORTH, RANGE 65 WEST OF THE 6TH PRINCIPAL MERIDIAN



IMPROVEMENTS

- | | |
|----------------------|----------------------|
| 1. PIVOT TRACK: | 298', 475'± SE |
| 2. FIELD ROAD: | 252'± W |
| 3. OVERHEAD UTILITY: | 262'± W |
| 4. PROD. FACILITY: | 220', 249'± NW |
| 5. GAS LINE MARKERS: | 300', 376', 304'± NW |
| 6. PROD. FACILITY: | 327', 355'± NW |
| 7. OVERHEAD UTILITY: | 240'± N |
| 8. S EDGE WCR 38: | 251'± N |
| 9. PROD. FACILITY: | 417', 442'± NW |
| 10. GAS WELL: | 588'± SE |

DISTANCE TO NEAREST:

- | | |
|---------------------|----------|
| BUILDING: | 960'± NW |
| PUBLIC ROAD: | 251'± N |
| ABOVE GRND UTILITY: | 240'± N |
| RAILROAD: | 5280'± |
| PROP. LINE: | 208'± W |

