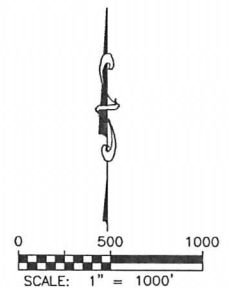
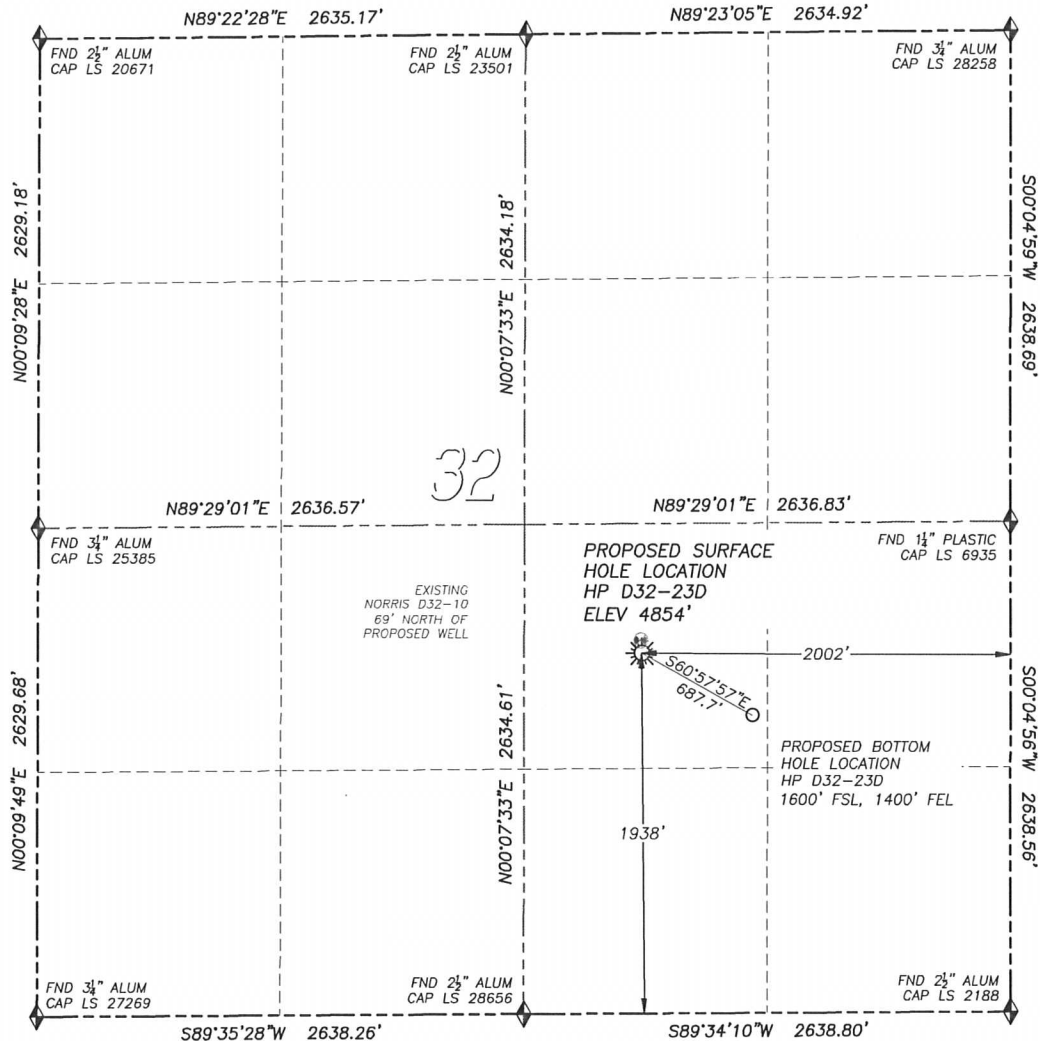


WELL LOCATION CERTIFICATE

HP D32-23D

SECTION 32, TOWNSHIP 3 NORTH, RANGE 64 WEST OF THE 6TH PRINCIPAL MERIDIAN

**LEGEND**

- ◆ FOUND MONUMENT AS DESCRIBED
- ☼ PROPOSED WELL
- EXISTING WELL
- BOTTOM HOLE
- ⊗ ABANDONED WELL

NAD 83 LATITUDE AND LONGITUDE**HP D32-23D SURFACE HOLE:**

LATITUDE: N40.17985°
 LONGITUDE: W104.57293°
 ELEVATION: 4854'
 FOOTAGE: 1938' FSL, 2002' FEL
 PDOP: 1.6
 QTR/QTR: NW4/SE4
 PROP LINE: 938'± NORTHWEST

BOTTOM HOLE:

LATITUDE: N40.17893°
 LONGITUDE: W104.57078°
 FOOTAGE: 1600' FSL, 1400' FEL

NEAREST EXISTING WELL:

NORRIS D32-10 SURFACE HOLE
 LATITUDE: N40.18004°
 LONGITUDE: W104.57295°
 ELEVATION: 4854'
 69' NORTH

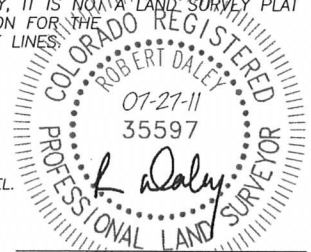
IN ACCORDANCE WITH A REQUEST FROM CJ PIETRI OF NOBLE ENERGY INC., DALEY LAND SURVEYING, INC. HAS DETERMINED THE SURFACE LOCATION OF THE HP D32-23D WELL TO BE 1938' FSL, 2002' FEL, AS MEASURED AT NINETY (90) DEGREES FROM THE SECTION LINES OF SECTION 32, TOWNSHIP 3 NORTH, RANGE 64 WEST OF THE 6TH PRINCIPAL MERIDIAN, WELD COUNTY, COLORADO. THE BOTTOM HOLE LOCATION, PROVIDED BY THE CLIENT, IS TO BE 1600' FSL, 1400' FEL.

I HEREBY CERTIFY THAT THIS WELL LOCATION CERTIFICATE WAS PREPARED BY ME OR UNDER MY DIRECT SUPERVISION, THAT THE WORK WAS COMPLETED ON 7/26/2011 FOR AND ON BEHALF OF NOBLE ENERGY, INC., AND THAT THIS MAP DOES NOT REPRESENT A BOUNDARY SURVEY, IT IS NOT A LAND SURVEY PLAT OR AN IMPROVEMENT SURVEY PLAT AND IT IS NOT TO BE RELIED UPON FOR THE ESTABLISHMENT OF FENCE, BUILDING OR OTHER FUTURE IMPROVEMENT LINES.

NOTES:

- 1) BEARINGS FOR THIS MAP ARE ASSUMED AND BASED UPON GPS OBSERVATIONS MADE BETWEEN MONUMENTS LOCATED AT THE SOUTHEAST CORNER AND SOUTH QUARTER CORNER OF SECTION 32, T.3N., R.64W.
- 2) HORIZONTAL DATUM IS NAD83.
- 3) VERTICAL DATUM IS NAVD88. ELEVATIONS ARE DERIVED FROM GPS OBSERVATIONS PROCESSED THROUGH OPUS, UTILIZING THE GEOID09 MODEL.
- 4) SEE LOCATION DRAWING FOR VISIBLE IMPROVEMENTS WITHIN 600' OF PROPOSED SURFACE HOLE LOCATION.
- 5) SURFACE USE: RANGE LAND.

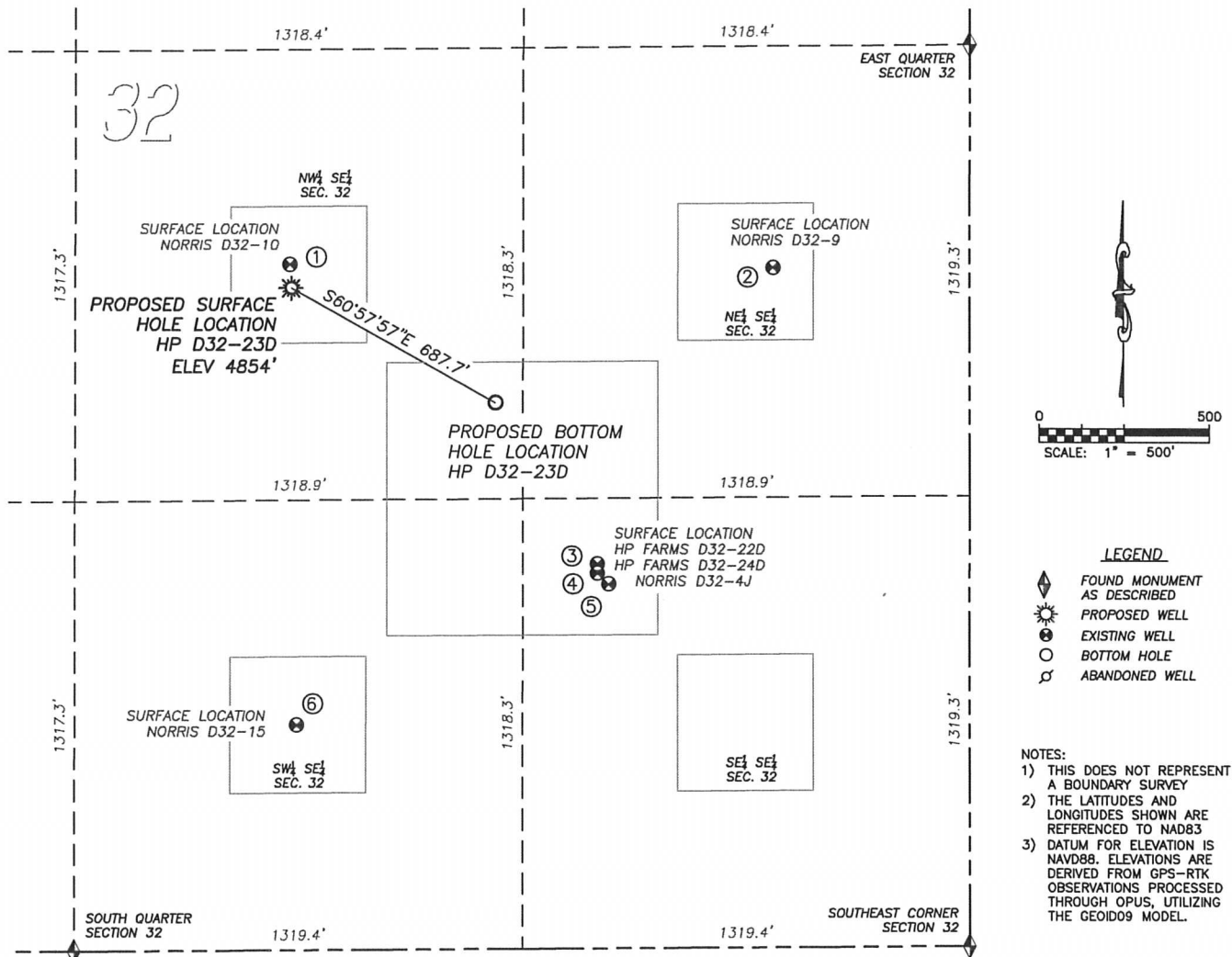
NOTICE: According to Colorado law you MUST commence any legal action based upon any defect in this W.L.C. within three years after you first discover such defect. In no event may any action based upon any such defect in this W.L.C. be commenced more than ten years from the date of the certification shown herein.



FOR AND ON BEHALF OF
DALEY LAND SURVEYING, INC.,
Robert Daley, PLS 35597

SITE SKETCH HP D32-23D

SECTION 32, TOWNSHIP 3 NORTH, RANGE 64 WEST OF THE 6TH PRINCIPAL MERIDIAN



①
NORRIS D32-10
NW/SE SEC. 32
2008' FSL, 2006' FEL
727' NW OF PROPOSED
BOTTOM HOLE LOCATION
LAT. N40.18004°
LONG. W104.57295°
EL: 4854'
PDOP 2.4

②
NORRIS D32-9
NE/SE SEC. 32
1991' FSL, 581' FEL
910' NE OF PROPOSED
BOTTOM HOLE LOCATION
LAT. N40.18002°
LONG. W104.56785°
EL: 4855'
PDOP 2.0

③
HP FARMS D32-22D
SE/SE SEC. 32
1126' FSL, 1098' FEL
560' SE OF PROPOSED
BOTTOM HOLE LOCATION
LAT. N40.17764°
LONG. W104.56971°
EL: 4862'
PDOP 2.2

④
HP FARMS D32-24D
SE/SE SEC. 32
1098' FSL, 1098' FEL
583' SE OF PROPOSED
BOTTOM HOLE LOCATION
LAT. N40.17756°
LONG. W104.56971°
EL: 4862'
PDOP 2.2

⑤
NORRIS D32-4J
SE/SE SEC. 32
1067' FSL, 1065' FEL
627' SE OF PROPOSED
BOTTOM HOLE LOCATION
LAT. N40.17748°
LONG. W104.56959°
EL: 4862'
PDOP 2.0

⑥
NORRIS D32-15
SW/SE SEC. 32
659' FSL, 1984' FEL
1112' SW OF PROPOSED
BOTTOM HOLE LOCATION
LAT. N40.17634°
LONG. W104.57288°
EL: 4864'
PDOP 2.1

