

PLETCHER 13-25
TOWNSHIP 1 NORTH, RANGE 47 WEST
SECTION 25: NW1/4 SW1/4
YUMA COUNTY, COLORADO

WELL FACING NORTH
PICTURE DATED: 9/15/2011

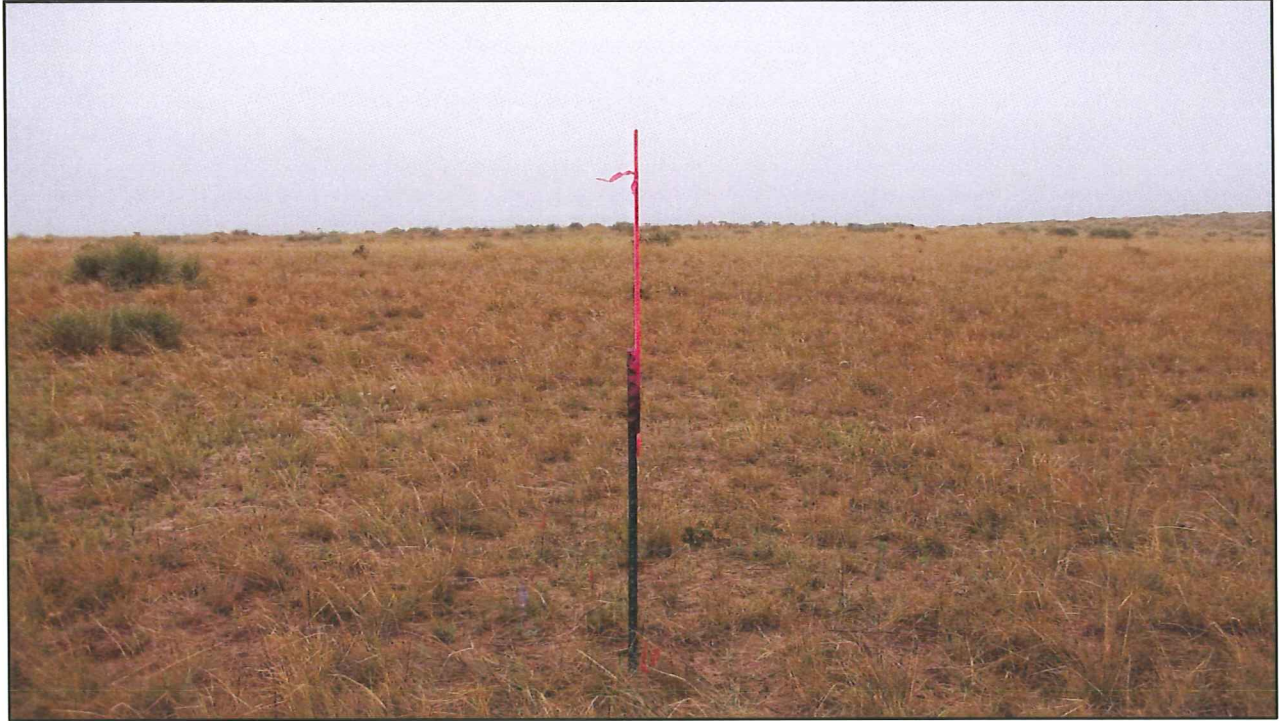


WELL FACING SOUTH
PICTURE DATED: 9/15/2011



PLETCHER 13-25
TOWNSHIP 1 NORTH, RANGE 47 WEST
SECTION 25: NW1/4 SW1/4
YUMA COUNTY, COLORADO

WELL FACING EAST
PICTURE DATED: 9/15/2011



WELL FACING WEST
PICTURE DATED: 9/15/2011

