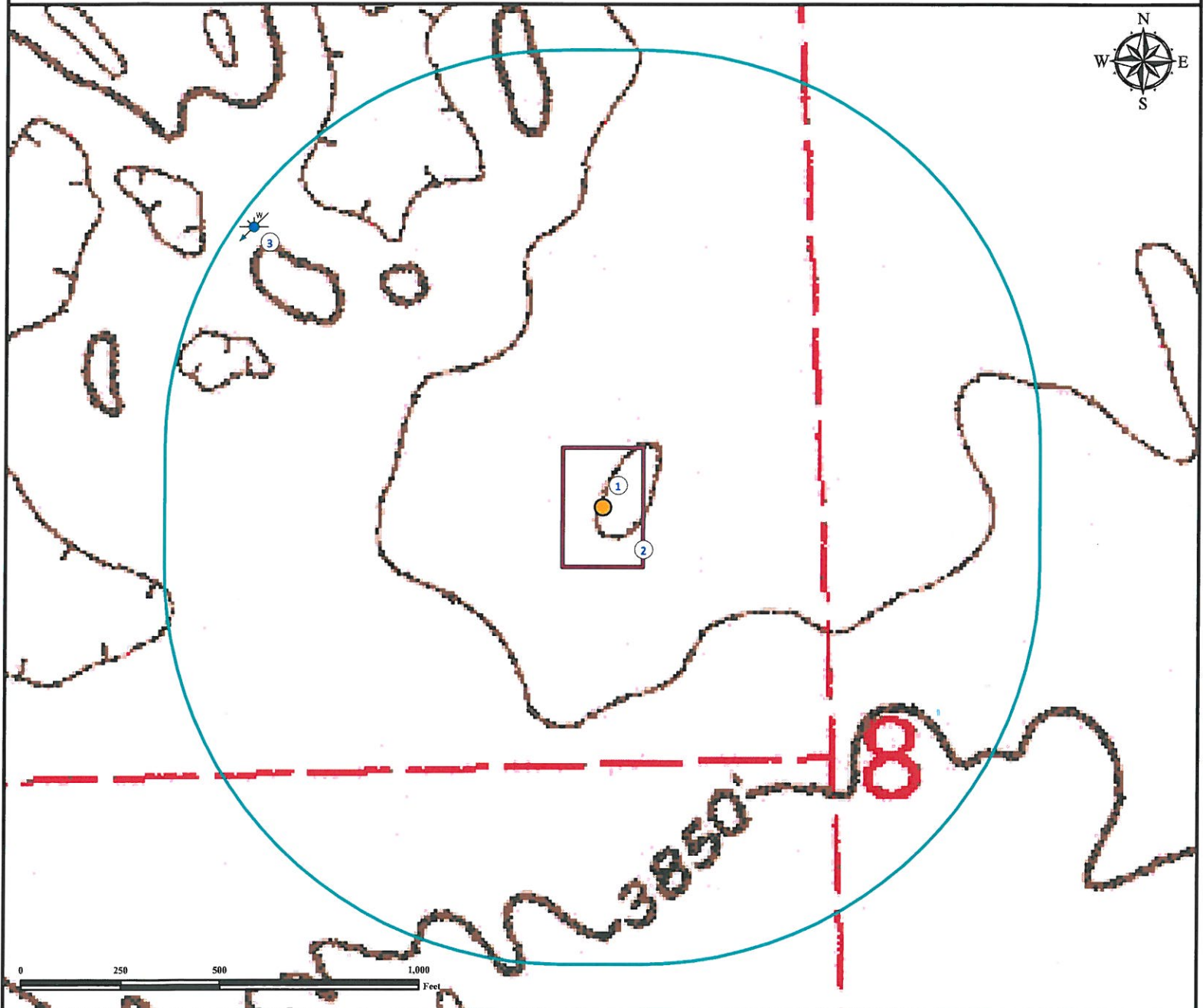


# Hydrology Map

## PEAKER 2 - 8

SE¼ NW¼ SECTION 8, TOWNSHIP 1 NORTH, RANGE 45 WEST OF THE 6TH PRINCIPAL MERIDIAN



1. Proposed well PEAKER 2-8.
2. Operational Disturbance Area.
3. Water well (#113329, Status is Well Abandoned) is ±1131' NW.

### Legend

- |               |                  |
|---------------|------------------|
| Proposed Well | Disturbance Area |
| Water Well    | 1000' Radius     |

### Reference Location

\*\* All Measurements are Made from Reference Well PEAKER 2-8 \*\*

Lat: 40.070357° Long:-102.428403° (NAD83)  
Elevation: 3838 Feet



Use our resources to find yours!  
[www.petro-fs.com](http://www.petro-fs.com)  
(303) 928-7128

Field Date: 10/23/2011  
Drafting Date: 11/03/2011  
Drafter: KLM  
Checked By: BHF

Data Sources:  
- TOPO courtesy USGS

Prepared for: **PETRON  
DEVELOPMENT  
COMPANY**