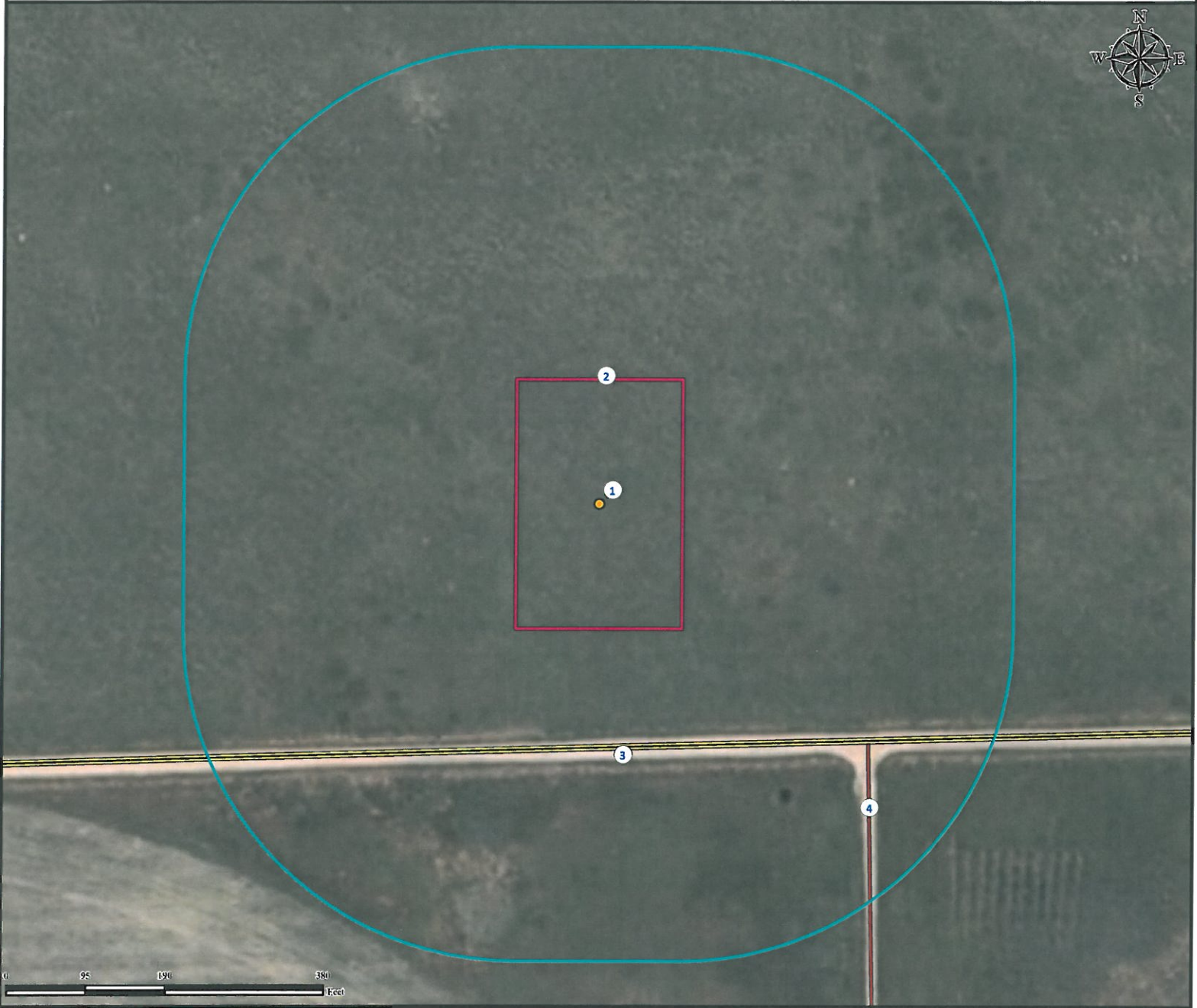


# Location Drawing

## G O E G L E I N 1 - 2 6

**SE¼ SW¼ SECTION 26, TOWNSHIP 3 NORTH, RANGE 47 WEST OF THE 6TH PRINCIPAL MERIDIAN**



- 1. Proposed well GOEGLEIN 1-26.
- 2. Operational Disturbance Area.
- 3. County Road 43 is ±295' S.
- 4. Private Road is ±437' SE.

Legend		
Proposed Well	Disturbance Area	Private Road
400' Radius	County Road	

**Reference Location**  
 \*\* All Measurements are Made from Reference Well GOEGLEIN 1-26 \*\*  
 Lat: 40.192212° Long: -102.595877° (NAD83)  
 Elevation: 3985 Feet  
 Surface Use: CRP

**Use our resources to find yours!**  
[www.petro-fs.com](http://www.petro-fs.com)  
 (303) 928-7128

Field Date: 10/16/2011  
 Drafting Date: 11/03/2011  
 Drafter: HMB  
 Checked By: BHF

Data Sources:  
 - Aerial courtesy of NAIP (2009)

Prepared for: **PETRON DEVELOPMENT COMPANY**