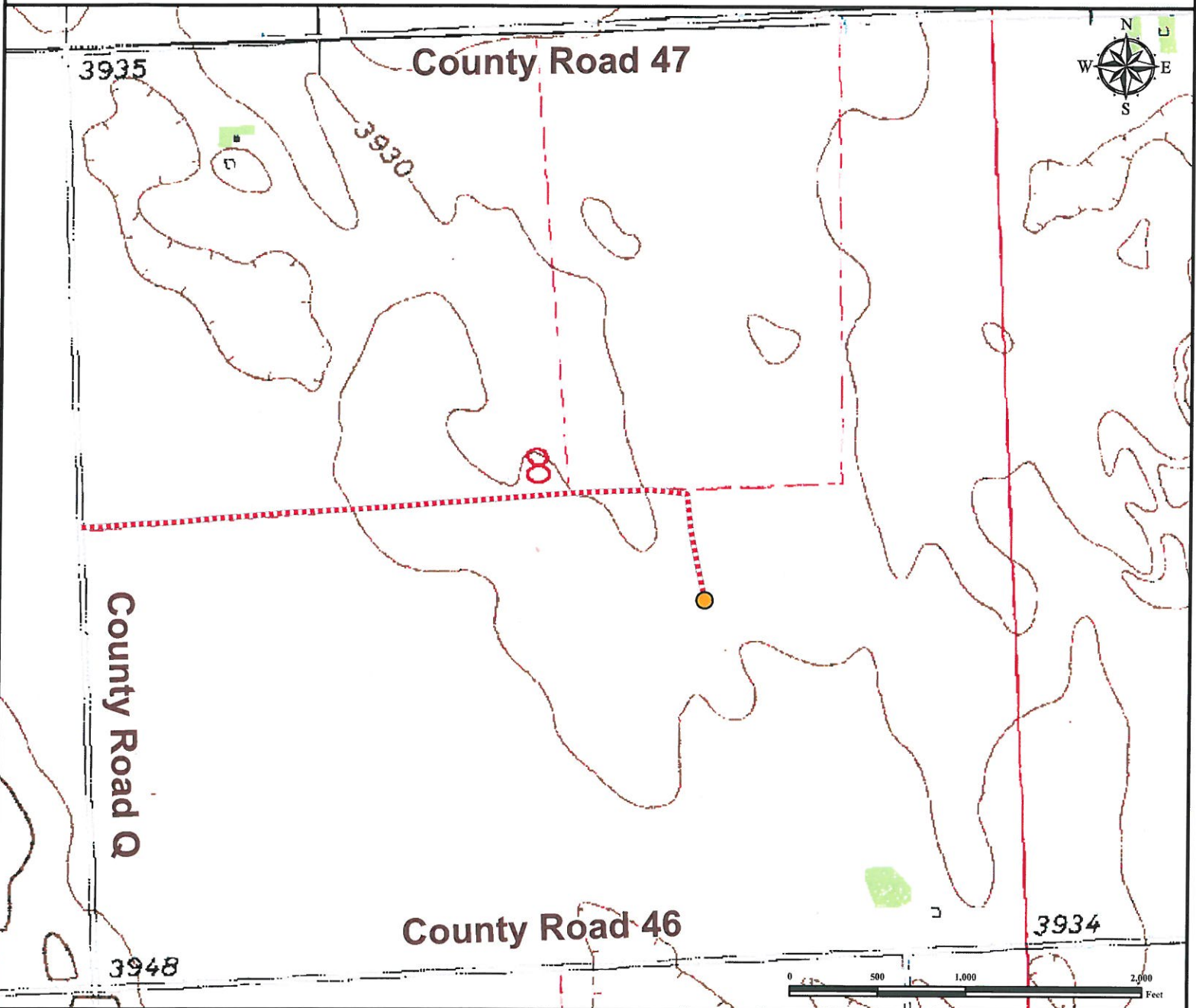


# Access Road Map

## DAY 2 - 8

NW¼ SE¼ SECTION 8, TOWNSHIP 3 NORTH, RANGE 46 WEST OF THE 6TH PRINCIPAL MERIDIAN



**From Yuma, CO:** From the intersection of US Highway 34/8th Ave and Highway 59/Detroit St., proceed North on Highway 59 (turns into County Road F) ±8.0 miles to County road 46.  
**Turn Right** onto County road 46 and proceed East ±9.0 Miles.  
**Turn Left** onto County road Q and proceed North ±0.5 miles to proposed access road.  
**Turn Right** onto proposed access road and proceed East ±0.65 miles.  
**Turn Right** and proceed South ±0.1 miles to proposed well location.  
Total distance from Yuma, CO to proposed well location is ±18.25 miles.

### Legend

- Proposed Access Road
- Proposed Well

### Reference Location

\*\* All Measurements are Made from Reference Well DAY 2-8 \*\*  
Lat: 40.241060° Long:-102.534549° (NAD83)  
Elevation: 3921 Feet



Use our resources to find yours!  
[www.petro-fs.com](http://www.petro-fs.com)  
(303) 928-7128

Field Date: 10/16/2011  
Drafting Date: 11/02/2011  
Drafter: DMM  
Checked By: BHF

Data Sources:  
- TOPO courtesy of USGS

Prepared for: **PETRON DEVELOPMENT COMPANY**