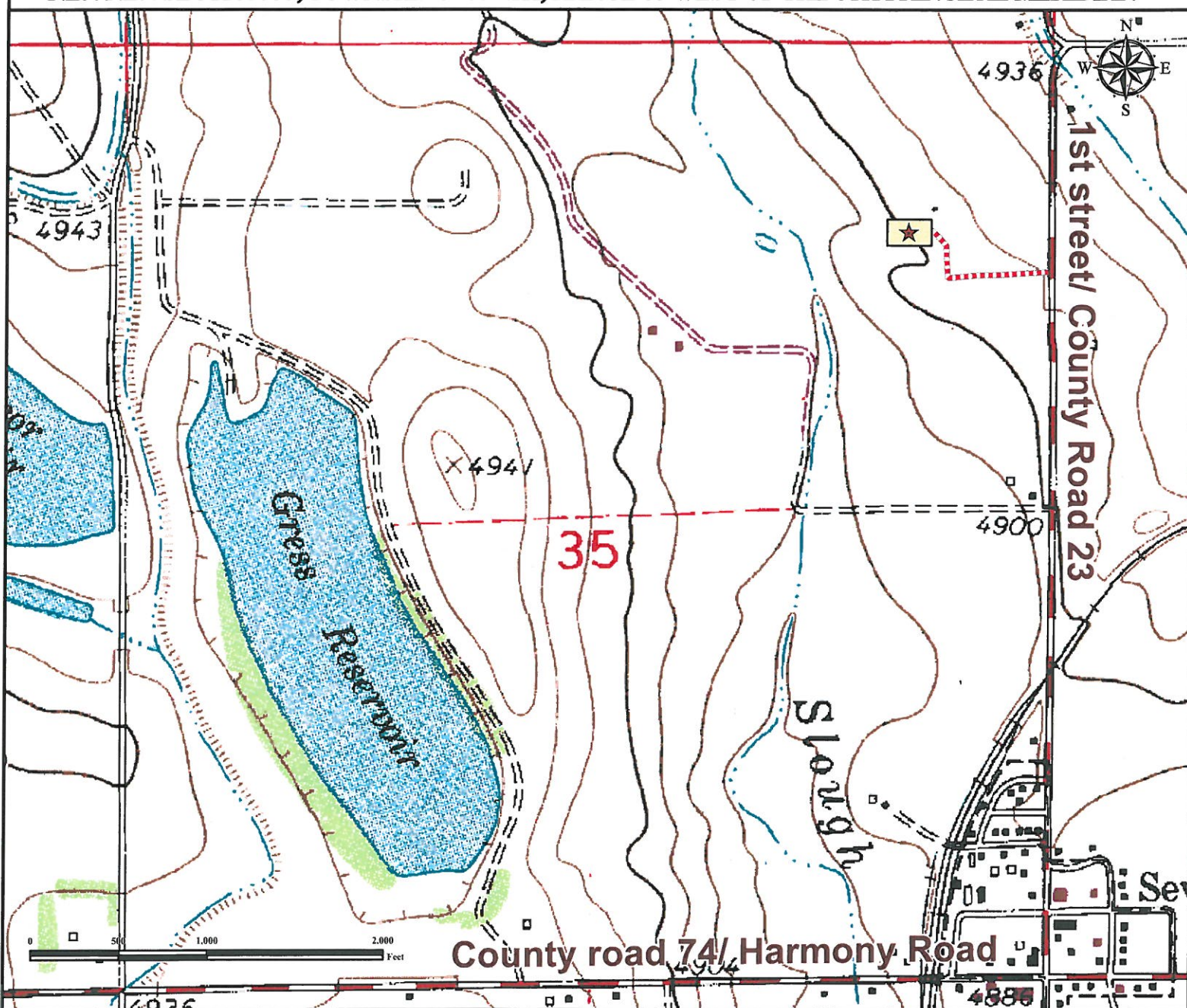


Access Road Map HERGERT 1-35 FACILITY

NE¼ NE¼ SECTION 35, TOWNSHIP 7 NORTH, RANGE 67 WEST OF THE 6TH PRINCIPAL MERIDIAN



From Severance, CO: From the intersection of County road 74/ Harmony Road and First street/ County road 23,
Turn Left and proceed North on First street/ County road 23 ± 0.75 miles to proposed access road
Turn Left onto proposed access road and proceed West ± 0.10 miles.
Turn Right and proceed Northwest ± 0.10 miles to proposed facility location.


Total distance from Severance, CO to proposed well location is ± 0.95 miles.

*** Size of Facility has been exaggerated to be clearly visible at this scale ***

Legend

 Proposed Facility  Proposed Access Road

Reference Location

**** All Measurements are Made from Reference Point  ****

Lat: 40.534896° Long: -104.853820° (NAD83)
Elevation: 4902 Feet



Use our resources to find yours!
www.petro-fs.com
(303) 928-7128

Field Date: 09/27/2011
Drafting Date: 10/27/2011
Drafter: DMM
Checked By: BHF

Data Sources:
- TOPO courtesy of USGS

Prepared for:



BAYSWATER
EXPLORATION AND PRODUCTION, LLC