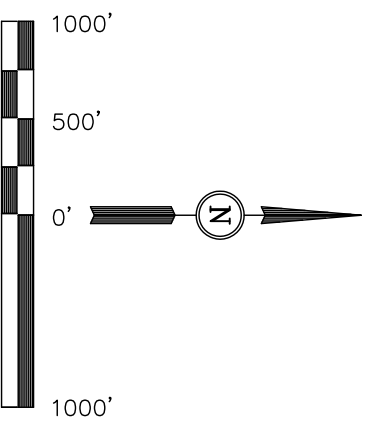


QUICKSILVER RESOURCES, INC.

BASIS OF ELEVATION

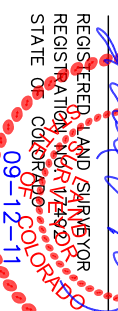
BASIS OF BEARINGS

BASIS OF BEARINGS IS A G.P.S. OBSERVATION.




CERTIFICATE

REGISTERED LAND SURVEYOR
REGISTRATION NO. 17492
STATE OF COLORADO
09-12-11



└ = 90° SYMBOL

 = PROPOSED WELL HEAD.

▲ = SECTION CORNERS LOCATED.

NAD 83 (SURFACE LOCATION)
LATITUDE = 40°29'47.88" (40.496633)
LONGITUDE = 107°01'15.90" (107.021083)
NAD 27 (SURFACE LOCATION)
LATITUDE = 40°29'47.97" (40.496656)
LONGITUDE = 107°01'13.71" (107.020475)
STATE PLANE NAD 83
N: 1427392.17 E: 2576987.15
STATE PLANE NAD 27
N: 427330.85 E: 1577145.33

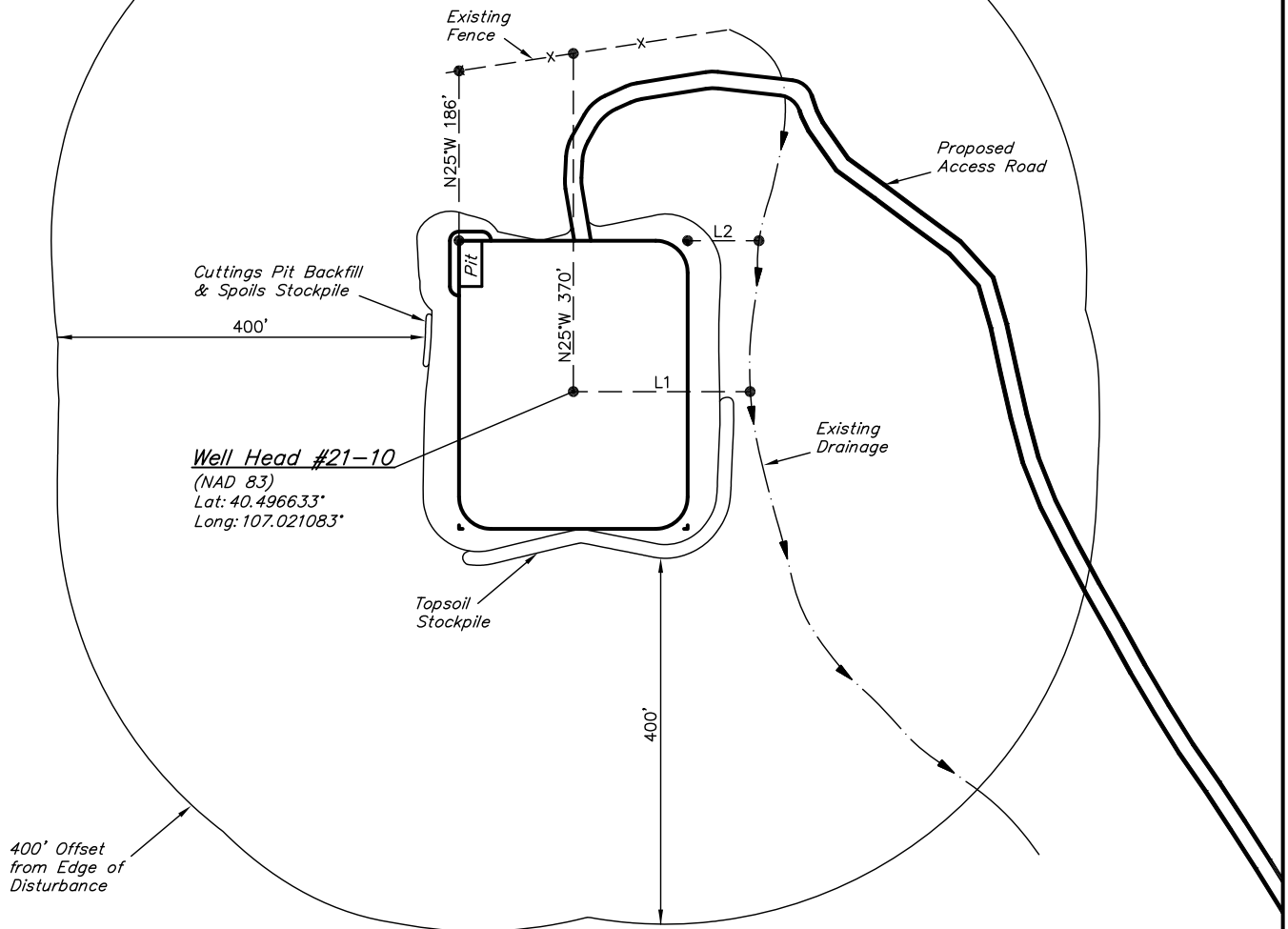
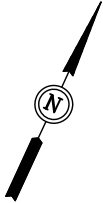
UNTAH ENGINEERING & LAND SURVEYING			
85 SOUTH 200 EAST - VERNAL, UTAH 84078			
(435) 789-1017			
SCALE	1" = 1000'	DATE SURVEYED:	DATE DRAWN:
		08-12-11	09-01-11
PARTY	G.M. T.B. Z.L.	REFERENCES	G.L.O. PLAT
WEATHER	WARM	FILE	QUICKSILVER RESOURCES, INC.

QUICKSILVER RESOURCES, INC.

ADDENDUM TO LEGAL PLAT FOR

CAMILLETTI #21-10
SECTION 10, T6N, R86W, 6th P.M.
1345' FNL 2584' FWL

SCALE: 1" = 200'
DATE: 09-01-11
DRAWN BY: Z.L.



LINE TABLE		
LINE	DIRECTION	LENGTH
L1	N65°E	193'
L2	N65°E	78'