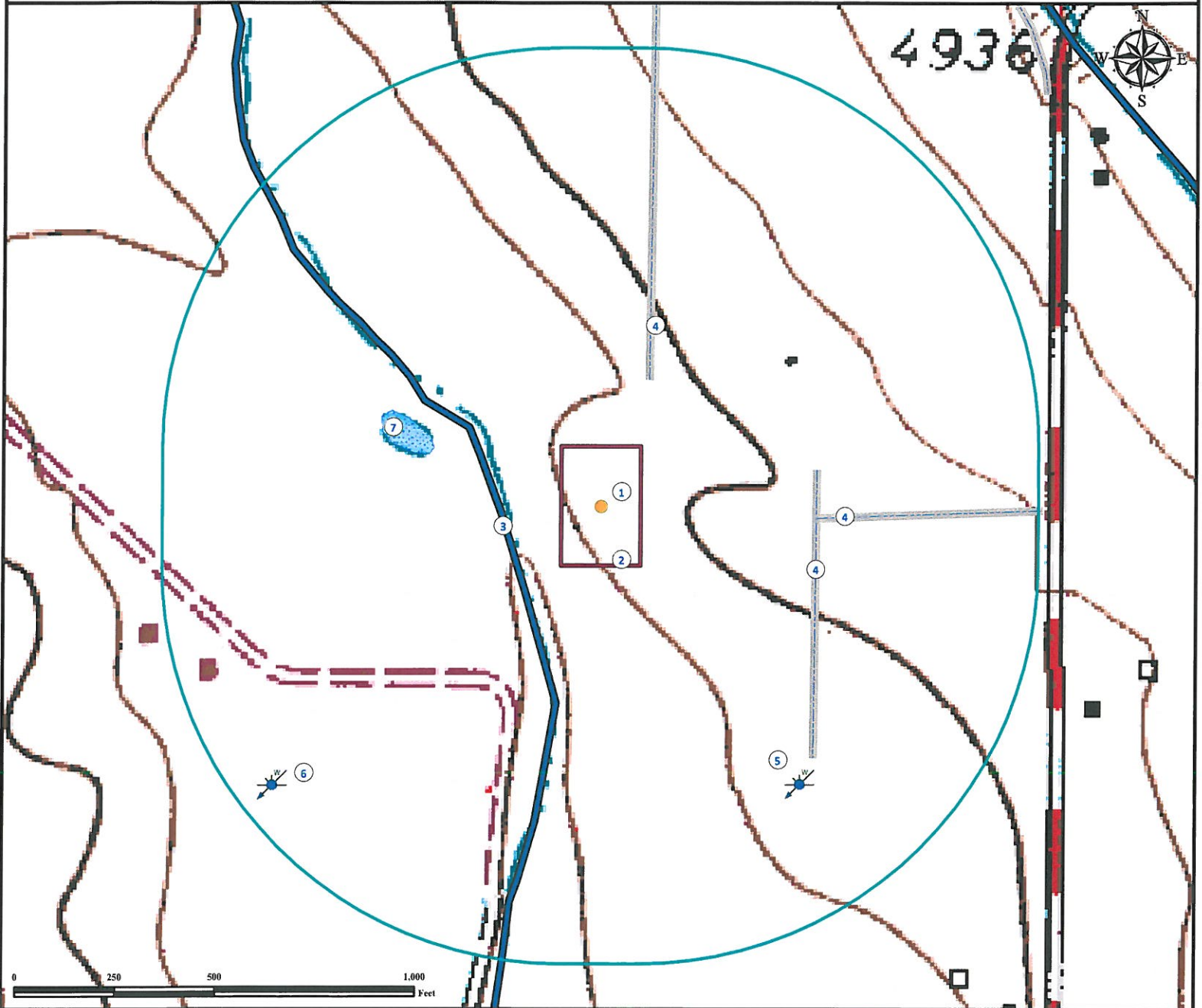


Hydrology Map

HERGERT 17-35

NE¼ NE¼ SECTION 35, TOWNSHIP 7 NORTH, RANGE 67 WEST OF THE 6TH PRINCIPAL MERIDIAN



- | | |
|---|---|
| 1. Proposed well HERGERT 17-35. | 5. Water well (#13388) is ±857' SE. Feature not in this location per field verify. |
| 2. Operational disturbance area. | 6. Water well (#11513) is ±1079' SW. Feature not in this location per field verify. |
| 3. Canal is ±243' SW. | 7. Intermittent pond is ±446' NW. Feature dry at time of mapping. |
| 4. Concrete ditches are ±388' NE, ±541E and ±541' SE. | |

Legend		
	Proposed Well	
	Water Well	
	Canal	

Reference Location

** All Measurements are Made from Reference Well HERGERT 17-35 **

Lat: 40.534340° Long: -104.855112° (NAD83)
Elevation: 4897 Feet

Use our resources to find yours!

www.petro-fs.com
(303) 928-7128

Field Date: 09/27/2011
Drafting Date: 10/27/2011
Drafter: DMM
Checked By: BHF

Data Sources:
TOPO courtesy USGS
Water wells courtesy CDOWR
Intermittent pond courtesy NHD

Prepared for:

BAYSWATER
EXPLORATION AND PRODUCTION, LLC