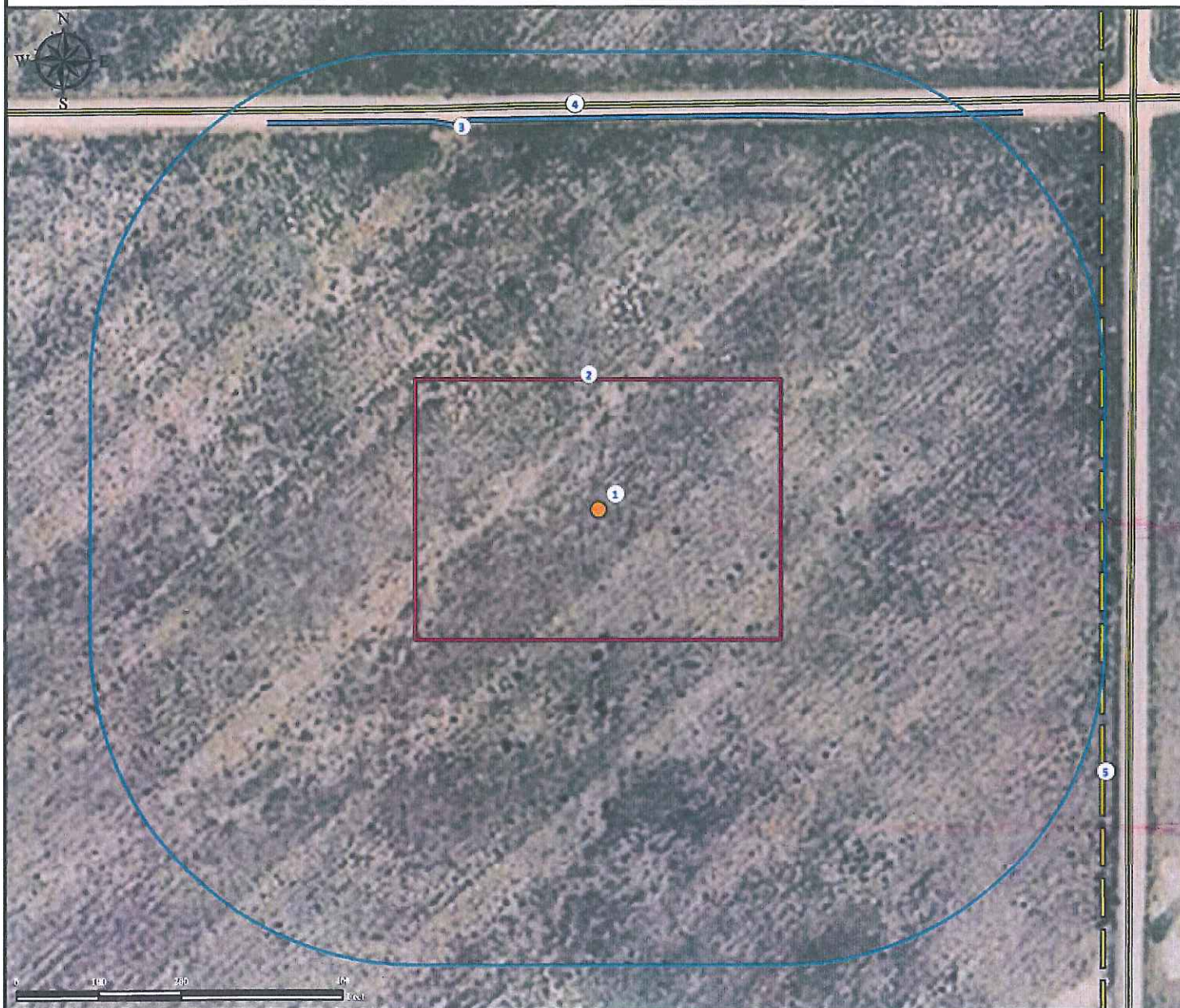


Location Drawing

CONRAD 1-11H

NE¼ NE¼ SECTION 11, TOWNSHIP 7 NORTH, RANGE 62 WEST OF THE 6TH PRINCIPAL MERIDIAN



- | | |
|----------------------------------|------------------------------------|
| 1. Proposed Well CONRAD 1-11H. | 4. County Road 84 is $\pm 495'$ N. |
| 2. Operational Disturbance Area. | 5. Powerline is $\pm 621'$ E. |
| 3. Ditch is $\pm 479'$ N. | |

Legend

- | | | | |
|---------------|------------------|-------------|-----------|
| Proposed Well | Disturbance Area | Public Road | Powerline |
| 400' Radius | Ditch | | |

Reference Location

** All Measurements are Made from Reference Well CONRAD 1-11H**
 Lat: 40.594430° Long: -104.280728° (NAD83)
 Elevation: 4938 Feet

Surface Use: Rangeland



Use our resources to find yours!
www.petro-fs.com
 (303) 928-7128

Field Date: 10/18/2011
 Drafting Date: 10/25/2011
 Drafter: DMM
 Checked By: BHF

Data Sources:
 - Aerial courtesy of NAIP (2009)

Prepared for:

