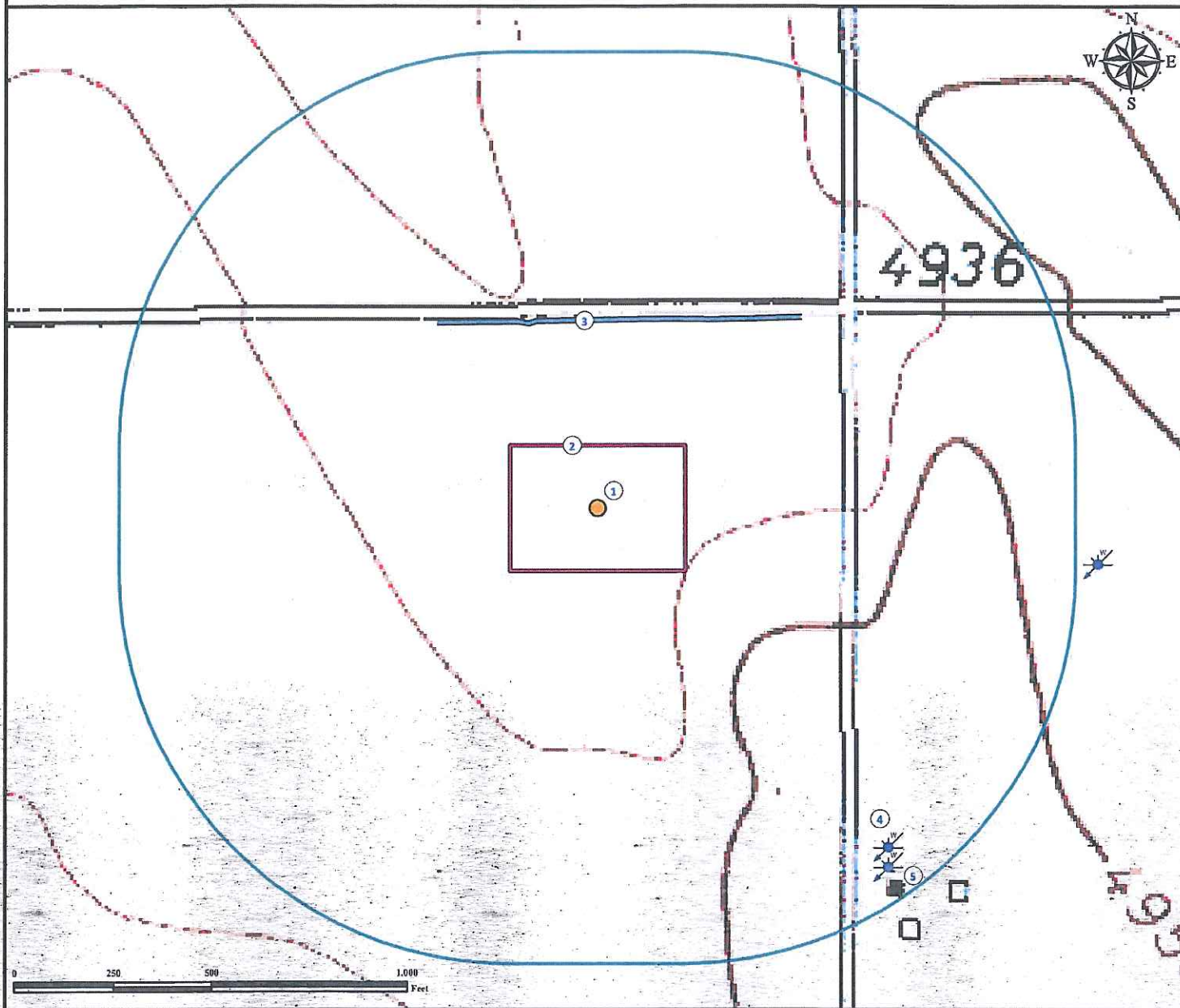


# Hydrology Map

## CONRAD 1-11H

NE¼ NE¼ SECTION 11, TOWNSHIP 7 NORTH, RANGE 62 WEST OF THE 6TH PRINCIPAL MERIDIAN



1. Proposed Well CONRAD 1-11H.

2. Operational Disturbance Area.

3. Ditch is  $\pm 479'$  N.

4. Abandoned Water Well (#99800) is  $\pm 1137'$  SE. Feature not in this location per field verify.

5. Constructed Water Well (#99800) is  $\pm 1175'$  SE. Feature not in this location per field verify.

### Legend

- Proposed Well
- Disturbance Area
- Ditch
- Water Well
- 1000' Radius

### Reference Location

\*\* All Measurements are Made from Reference Well CONRAD 1-11H \*\*

Lat: 40.594430° Long: -104.280728° (NAD83)  
Elevation: 4938 Feet



Use our resources to find yours!  
[www.petro-fs.com](http://www.petro-fs.com)  
(303) 928-7128

Field Date: 10/18/2011  
Drafting Date: 10/25/2011  
Drafter: DMM  
Checked By: BHF

Data Sources:  
- TOPO courtesy of USGS  
- Water Wells courtesy of CDOWR

Prepared for:

