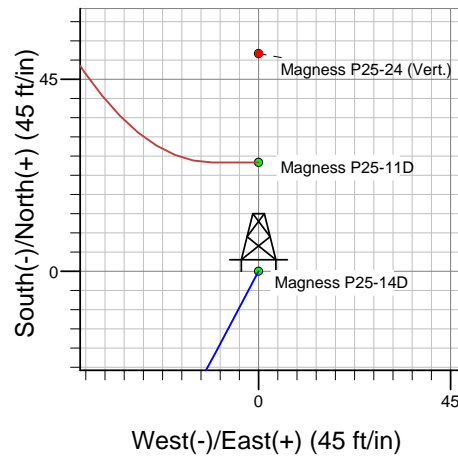
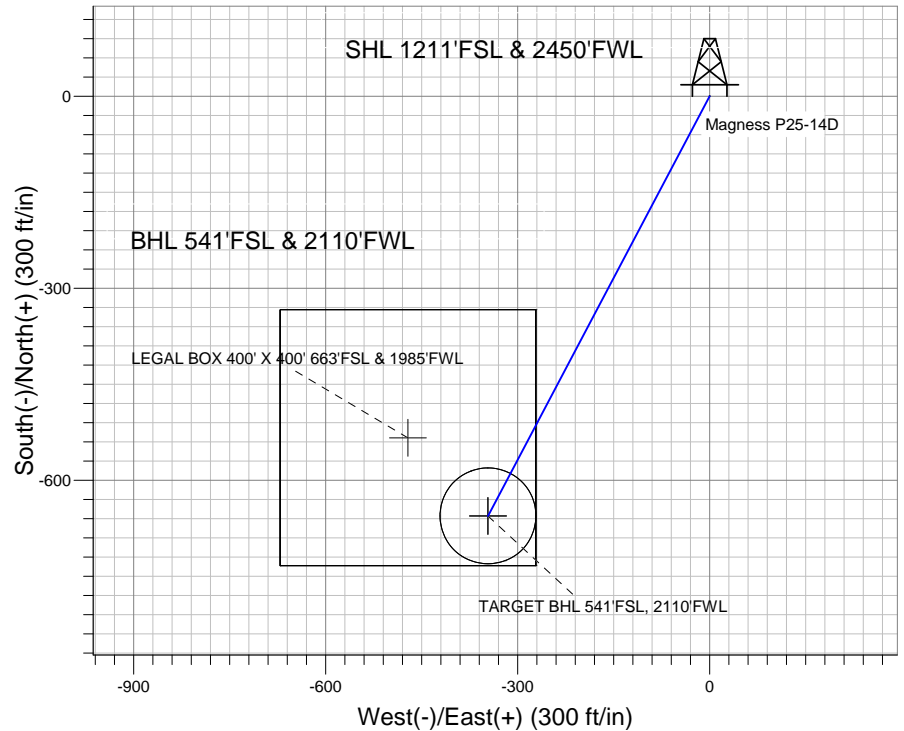
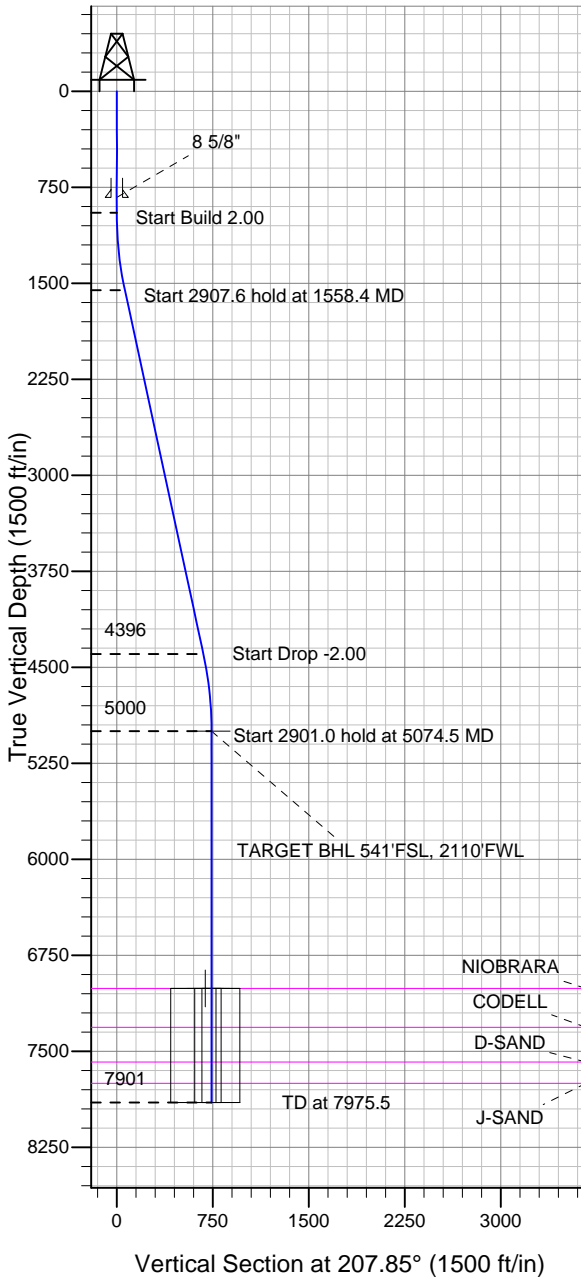


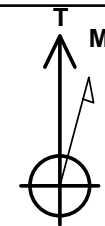
Well Name: Magness P25-14D

Surface Location: Magness P25-11D Pad Sec.25-T3N-R67W
 North American Datum 1983 US State Plane 1983 Colorado Northern Zone
 Ground Elevation: 4810.0
 +N/-S +E/-W Northing Easting Latitude Longitude Slot
 0.0 0.0 1313452.42 3184370.88 40.191940 -104.840030
 Original Well Elev WELL @ 4823.0ft (Original Well Elev)

NOBLE ENERGY INC WELD COUNTY CO



Magness P25-11D Pad Sec.25-T3N-R67W
 Magness P25-14D
 Noble Magness P25-14D Plan #1 (9-02-11)
 14:15, September 07 2011



Azimuths to True North
 Magnetic North: 8.81°

Magnetic Field
 Strength: 53013.1nT
 Dip Angle: 66.87°
 Date: 9/7/2011
 Model: IGRF200510

WELLBORE TARGET DETAILS (LAT/LONG)

Name	TVD	+N/-S	+E/-W	Latitude	Longitude	Shape
TARGET BHL 541'FSL, 2110'FWL	5000.0	-655.7	-346.4	40.190140	-104.841270	Point
LEGAL BOX 400' X 400' 663'FSL & 1985'FWL	7010.0	-533.7	-471.4	40.190475	-104.841717	Rectangle (Sides: L400.0 W400.0)
TARGET CIRCLE 541'FSL, 2110'FWL	7010.0	-655.7	-346.4	40.190140	-104.841270	Circle (Radius: 75.0)

SECTION DETAILS

Sec	MD	Inc	Azi	TVD	+N/-S	+E/-W	DLeg	TFace	VSec	Target
1	0.0	0.00	0.00	0.0	0.0	0.0	0.00	0.00	0.0	
2	950.0	0.00	0.00	950.0	0.0	0.0	0.00	0.00	0.0	
3	1558.4	12.17	207.85	1553.9	-56.9	-30.1	2.00	207.85	64.4	
4	4466.0	12.17	207.85	4396.1	-598.8	-316.4	0.00	0.00	677.2	
5	5074.5	0.00	0.00	5000.0	-655.7	-346.4	2.00	180.00	741.6	TARGET BHL 541'FSL, 2110'FWL
6	7975.5	0.00	0.00	7901.0	-655.7	-346.4	0.00	0.00	741.6	



Directional

NOBLE ENERGY INC WELD COUNTY CO

SEC.25-T3N-R67W

Magness P25-11D Pad Sec.25-T3N-R67W

Magness P25-14D

Wellbore #1

Plan: Noble Magness P25-14D Plan #1 (9-02-11)

Standard Planning Report

07 September, 2011



Database:	Landmark	Local Co-ordinate Reference:	Well Magness P25-14D
Company:	NOBLE ENERGY INC WELD COUNTY CO	TVD Reference:	WELL @ 4823.0ft (Original Well Elev)
Project:	SEC.25-T3N-R67W	MD Reference:	WELL @ 4823.0ft (Original Well Elev)
Site:	Magness P25-11D Pad Sec.25-T3N-R67W	North Reference:	True
Well:	Magness P25-14D	Survey Calculation Method:	Minimum Curvature
Wellbore:	Wellbore #1		
Design:	Noble Magness P25-14D Plan #1 (9-02-11)		

Project	SEC.25-T3N-R67W, Weld County, Colorado		
Map System:	US State Plane 1983	System Datum:	Mean Sea Level
Geo Datum:	North American Datum 1983		Using Well Reference Point
Map Zone:	Colorado Northern Zone		Using geodetic scale factor

Site						Magness P25-11D Pad Sec.25-T3N-R67W											
Site Position:						Northing:			1,313,477.94 ft			Latitude:			40.192010		
From:			Lat/Long			Easting:			3,184,370.69 ft			Longitude:			-104.840030		
Position Uncertainty:			0.0 ft			Slot Radius:			"			Grid Convergence:			0.43 °		

Well	Magness P25-14D					
Well Position	+N-S	-25.5 ft	Northing:	1,313,452.42 ft	Latitude:	40.191940
	+E-W	0.0 ft	Easting:	3,184,370.88 ft	Longitude:	-104.840030
Position Uncertainty		0.0 ft	Wellhead Elevation:	ft	Ground Level:	4,810.0 ft

Wellbore	Wellbore #1				
Magnetics	Model Name	Sample Date	Declination (°)	Dip Angle (°)	Field Strength (nT)
	IGRF200510	9/7/2011	8.81	66.87	53,013

Design	Noble Magness P25-14D Plan #1 (9-02-11)			
Audit Notes:				
Version:	Phase:	PROTOTYPE	Tie On Depth:	0.0
Vertical Section:	Depth From (TVD) (ft)	+N/-S (ft)	+E/-W (ft)	Direction (°)
	0.0	0.0	0.0	207.85

Plan Sections										
Measured Depth (ft)	Inclination (°)	Azimuth (°)	Vertical Depth (ft)	+N/-S (ft)	+E/-W (ft)	Dogleg Rate (°/100ft)	Build Rate (°/100ft)	Turn Rate (°/100ft)	TFO (°)	Target
0.0	0.00	0.00	0.0	0.0	0.0	0.00	0.00	0.00	0.00	
950.0	0.00	0.00	950.0	0.0	0.0	0.00	0.00	0.00	0.00	
1,558.4	12.17	207.85	1,553.9	-56.9	-30.1	2.00	2.00	0.00	207.85	
4,466.0	12.17	207.85	4,396.1	-598.8	-316.4	0.00	0.00	0.00	0.00	
5,074.5	0.00	0.00	5,000.0	-655.7	-346.4	2.00	-2.00	0.00	180.00	TARGET BHL 541'I
7,975.5	0.00	0.00	7,901.0	-655.7	-346.4	0.00	0.00	0.00	0.00	

Database:	Landmark	Local Co-ordinate Reference:	Well Magness P25-14D
Company:	NOBLE ENERGY INC WELD COUNTY CO	TVD Reference:	WELL @ 4823.0ft (Original Well Elev)
Project:	SEC.25-T3N-R67W	MD Reference:	WELL @ 4823.0ft (Original Well Elev)
Site:	Magness P25-11D Pad Sec.25-T3N-R67W	North Reference:	True
Well:	Magness P25-14D	Survey Calculation Method:	Minimum Curvature
Wellbore:	Wellbore #1		
Design:	Noble Magness P25-14D Plan #1 (9-02-11)		

Planned Survey									
Measured Depth (ft)	Inclination (°)	Azimuth (°)	Vertical Depth (ft)	+N/-S (ft)	+E/-W (ft)	Vertical Section (ft)	Dogleg Rate (°/100ft)	Build Rate (°/100ft)	Turn Rate (°/100ft)
0.0	0.00	0.00	0.0	0.0	0.0	0.0	0.00	0.00	0.00
40.0	0.00	0.00	40.0	0.0	0.0	0.0	0.00	0.00	0.00
80.0	0.00	0.00	80.0	0.0	0.0	0.0	0.00	0.00	0.00
120.0	0.00	0.00	120.0	0.0	0.0	0.0	0.00	0.00	0.00
160.0	0.00	0.00	160.0	0.0	0.0	0.0	0.00	0.00	0.00
200.0	0.00	0.00	200.0	0.0	0.0	0.0	0.00	0.00	0.00
240.0	0.00	0.00	240.0	0.0	0.0	0.0	0.00	0.00	0.00
280.0	0.00	0.00	280.0	0.0	0.0	0.0	0.00	0.00	0.00
320.0	0.00	0.00	320.0	0.0	0.0	0.0	0.00	0.00	0.00
360.0	0.00	0.00	360.0	0.0	0.0	0.0	0.00	0.00	0.00
400.0	0.00	0.00	400.0	0.0	0.0	0.0	0.00	0.00	0.00
440.0	0.00	0.00	440.0	0.0	0.0	0.0	0.00	0.00	0.00
480.0	0.00	0.00	480.0	0.0	0.0	0.0	0.00	0.00	0.00
520.0	0.00	0.00	520.0	0.0	0.0	0.0	0.00	0.00	0.00
560.0	0.00	0.00	560.0	0.0	0.0	0.0	0.00	0.00	0.00
600.0	0.00	0.00	600.0	0.0	0.0	0.0	0.00	0.00	0.00
640.0	0.00	0.00	640.0	0.0	0.0	0.0	0.00	0.00	0.00
680.0	0.00	0.00	680.0	0.0	0.0	0.0	0.00	0.00	0.00
720.0	0.00	0.00	720.0	0.0	0.0	0.0	0.00	0.00	0.00
760.0	0.00	0.00	760.0	0.0	0.0	0.0	0.00	0.00	0.00
800.0	0.00	0.00	800.0	0.0	0.0	0.0	0.00	0.00	0.00
830.0	0.00	0.00	830.0	0.0	0.0	0.0	0.00	0.00	0.00
8 5/8"									
840.0	0.00	0.00	840.0	0.0	0.0	0.0	0.00	0.00	0.00
880.0	0.00	0.00	880.0	0.0	0.0	0.0	0.00	0.00	0.00
920.0	0.00	0.00	920.0	0.0	0.0	0.0	0.00	0.00	0.00
950.0	0.00	0.00	950.0	0.0	0.0	0.0	0.00	0.00	0.00
960.0	0.20	207.85	960.0	0.0	0.0	0.0	2.00	2.00	0.00
1,000.0	1.00	207.85	1,000.0	-0.4	-0.2	0.4	2.00	2.00	0.00
1,040.0	1.80	207.85	1,040.0	-1.2	-0.7	1.4	2.00	2.00	0.00
1,080.0	2.60	207.85	1,080.0	-2.6	-1.4	2.9	2.00	2.00	0.00
1,120.0	3.40	207.85	1,119.9	-4.5	-2.4	5.0	2.00	2.00	0.00
1,160.0	4.20	207.85	1,159.8	-6.8	-3.6	7.7	2.00	2.00	0.00
1,200.0	5.00	207.85	1,199.7	-9.6	-5.1	10.9	2.00	2.00	0.00
1,240.0	5.80	207.85	1,239.5	-13.0	-6.9	14.7	2.00	2.00	0.00
1,280.0	6.60	207.85	1,279.3	-16.8	-8.9	19.0	2.00	2.00	0.00
1,320.0	7.40	207.85	1,319.0	-21.1	-11.1	23.9	2.00	2.00	0.00
1,360.0	8.20	207.85	1,358.6	-25.9	-13.7	29.3	2.00	2.00	0.00
1,400.0	9.00	207.85	1,398.2	-31.2	-16.5	35.3	2.00	2.00	0.00
1,440.0	9.80	207.85	1,437.6	-37.0	-19.5	41.8	2.00	2.00	0.00
1,480.0	10.60	207.85	1,477.0	-43.2	-22.8	48.9	2.00	2.00	0.00
1,520.0	11.40	207.85	1,516.2	-50.0	-26.4	56.5	2.00	2.00	0.00
1,558.4	12.17	207.85	1,553.9	-56.9	-30.1	64.4	2.00	2.00	0.00
1,560.0	12.17	207.85	1,555.4	-57.2	-30.2	64.7	0.00	0.00	0.00
1,600.0	12.17	207.85	1,594.5	-64.7	-34.2	73.1	0.00	0.00	0.00
1,640.0	12.17	207.85	1,633.6	-72.1	-38.1	81.6	0.00	0.00	0.00
1,680.0	12.17	207.85	1,672.7	-79.6	-42.0	90.0	0.00	0.00	0.00
1,720.0	12.17	207.85	1,711.8	-87.0	-46.0	98.4	0.00	0.00	0.00
1,760.0	12.17	207.85	1,750.9	-94.5	-49.9	106.9	0.00	0.00	0.00
1,800.0	12.17	207.85	1,790.0	-101.9	-53.9	115.3	0.00	0.00	0.00
1,840.0	12.17	207.85	1,829.1	-109.4	-57.8	123.7	0.00	0.00	0.00
1,880.0	12.17	207.85	1,868.2	-116.8	-61.7	132.1	0.00	0.00	0.00
1,920.0	12.17	207.85	1,907.3	-124.3	-65.7	140.6	0.00	0.00	0.00
1,960.0	12.17	207.85	1,946.4	-131.8	-69.6	149.0	0.00	0.00	0.00

Database:	Landmark	Local Co-ordinate Reference:	Well Magness P25-14D
Company:	NOBLE ENERGY INC WELD COUNTY CO	TVD Reference:	WELL @ 4823.0ft (Original Well Elev)
Project:	SEC.25-T3N-R67W	MD Reference:	WELL @ 4823.0ft (Original Well Elev)
Site:	Magness P25-11D Pad Sec.25-T3N-R67W	North Reference:	True
Well:	Magness P25-14D	Survey Calculation Method:	Minimum Curvature
Wellbore:	Wellbore #1		
Design:	Noble Magness P25-14D Plan #1 (9-02-11)		

Planned Survey									
Measured Depth (ft)	Inclination (°)	Azimuth (°)	Vertical Depth (ft)	+N/-S (ft)	+E/-W (ft)	Vertical Section (ft)	Dogleg Rate (°/100ft)	Build Rate (°/100ft)	Turn Rate (°/100ft)
2,000.0	12.17	207.85	1,985.5	-139.2	-73.5	157.4	0.00	0.00	0.00
2,040.0	12.17	207.85	2,024.6	-146.7	-77.5	165.9	0.00	0.00	0.00
2,080.0	12.17	207.85	2,063.7	-154.1	-81.4	174.3	0.00	0.00	0.00
2,120.0	12.17	207.85	2,102.8	-161.6	-85.4	182.7	0.00	0.00	0.00
2,160.0	12.17	207.85	2,141.9	-169.0	-89.3	191.2	0.00	0.00	0.00
2,200.0	12.17	207.85	2,181.0	-176.5	-93.2	199.6	0.00	0.00	0.00
2,240.0	12.17	207.85	2,220.1	-183.9	-97.2	208.0	0.00	0.00	0.00
2,280.0	12.17	207.85	2,259.2	-191.4	-101.1	216.5	0.00	0.00	0.00
2,320.0	12.17	207.85	2,298.3	-198.8	-105.1	224.9	0.00	0.00	0.00
2,360.0	12.17	207.85	2,337.4	-206.3	-109.0	233.3	0.00	0.00	0.00
2,400.0	12.17	207.85	2,376.5	-213.8	-112.9	241.8	0.00	0.00	0.00
2,440.0	12.17	207.85	2,415.6	-221.2	-116.9	250.2	0.00	0.00	0.00
2,480.0	12.17	207.85	2,454.7	-228.7	-120.8	258.6	0.00	0.00	0.00
2,520.0	12.17	207.85	2,493.8	-236.1	-124.8	267.1	0.00	0.00	0.00
2,560.0	12.17	207.85	2,532.9	-243.6	-128.7	275.5	0.00	0.00	0.00
2,600.0	12.17	207.85	2,572.0	-251.0	-132.6	283.9	0.00	0.00	0.00
2,640.0	12.17	207.85	2,611.1	-258.5	-136.6	292.3	0.00	0.00	0.00
2,680.0	12.17	207.85	2,650.2	-265.9	-140.5	300.8	0.00	0.00	0.00
2,720.0	12.17	207.85	2,689.3	-273.4	-144.4	309.2	0.00	0.00	0.00
2,760.0	12.17	207.85	2,728.4	-280.9	-148.4	317.6	0.00	0.00	0.00
2,800.0	12.17	207.85	2,767.5	-288.3	-152.3	326.1	0.00	0.00	0.00
2,840.0	12.17	207.85	2,806.6	-295.8	-156.3	334.5	0.00	0.00	0.00
2,880.0	12.17	207.85	2,845.7	-303.2	-160.2	342.9	0.00	0.00	0.00
2,920.0	12.17	207.85	2,884.8	-310.7	-164.1	351.4	0.00	0.00	0.00
2,960.0	12.17	207.85	2,923.9	-318.1	-168.1	359.8	0.00	0.00	0.00
3,000.0	12.17	207.85	2,963.0	-325.6	-172.0	368.2	0.00	0.00	0.00
3,040.0	12.17	207.85	3,002.1	-333.0	-176.0	376.7	0.00	0.00	0.00
3,080.0	12.17	207.85	3,041.3	-340.5	-179.9	385.1	0.00	0.00	0.00
3,120.0	12.17	207.85	3,080.4	-347.9	-183.8	393.5	0.00	0.00	0.00
3,160.0	12.17	207.85	3,119.5	-355.4	-187.8	402.0	0.00	0.00	0.00
3,200.0	12.17	207.85	3,158.6	-362.9	-191.7	410.4	0.00	0.00	0.00
3,240.0	12.17	207.85	3,197.7	-370.3	-195.6	418.8	0.00	0.00	0.00
3,280.0	12.17	207.85	3,236.8	-377.8	-199.6	427.2	0.00	0.00	0.00
3,320.0	12.17	207.85	3,275.9	-385.2	-203.5	435.7	0.00	0.00	0.00
3,360.0	12.17	207.85	3,315.0	-392.7	-207.5	444.1	0.00	0.00	0.00
3,400.0	12.17	207.85	3,354.1	-400.1	-211.4	452.5	0.00	0.00	0.00
3,440.0	12.17	207.85	3,393.2	-407.6	-215.3	461.0	0.00	0.00	0.00
3,480.0	12.17	207.85	3,432.3	-415.0	-219.3	469.4	0.00	0.00	0.00
3,520.0	12.17	207.85	3,471.4	-422.5	-223.2	477.8	0.00	0.00	0.00
3,560.0	12.17	207.85	3,510.5	-429.9	-227.2	486.3	0.00	0.00	0.00
3,600.0	12.17	207.85	3,549.6	-437.4	-231.1	494.7	0.00	0.00	0.00
3,640.0	12.17	207.85	3,588.7	-444.9	-235.0	503.1	0.00	0.00	0.00
3,680.0	12.17	207.85	3,627.8	-452.3	-239.0	511.6	0.00	0.00	0.00
3,720.0	12.17	207.85	3,666.9	-459.8	-242.9	520.0	0.00	0.00	0.00
3,760.0	12.17	207.85	3,706.0	-467.2	-246.8	528.4	0.00	0.00	0.00
3,800.0	12.17	207.85	3,745.1	-474.7	-250.8	536.9	0.00	0.00	0.00
3,840.0	12.17	207.85	3,784.2	-482.1	-254.7	545.3	0.00	0.00	0.00
3,880.0	12.17	207.85	3,823.3	-489.6	-258.7	553.7	0.00	0.00	0.00
3,920.0	12.17	207.85	3,862.4	-497.0	-262.6	562.1	0.00	0.00	0.00
3,960.0	12.17	207.85	3,901.5	-504.5	-266.5	570.6	0.00	0.00	0.00
4,000.0	12.17	207.85	3,940.6	-512.0	-270.5	579.0	0.00	0.00	0.00
4,040.0	12.17	207.85	3,979.7	-519.4	-274.4	587.4	0.00	0.00	0.00
4,080.0	12.17	207.85	4,018.8	-526.9	-278.4	595.9	0.00	0.00	0.00
4,120.0	12.17	207.85	4,057.9	-534.3	-282.3	604.3	0.00	0.00	0.00

Database:	Landmark	Local Co-ordinate Reference:	Well Magness P25-14D
Company:	NOBLE ENERGY INC WELD COUNTY CO	TVD Reference:	WELL @ 4823.0ft (Original Well Elev)
Project:	SEC.25-T3N-R67W	MD Reference:	WELL @ 4823.0ft (Original Well Elev)
Site:	Magness P25-11D Pad Sec.25-T3N-R67W	North Reference:	True
Well:	Magness P25-14D	Survey Calculation Method:	Minimum Curvature
Wellbore:	Wellbore #1		
Design:	Noble Magness P25-14D Plan #1 (9-02-11)		

Planned Survey									
Measured Depth (ft)	Inclination (°)	Azimuth (°)	Vertical Depth (ft)	+N/-S (ft)	+E/-W (ft)	Vertical Section (ft)	Dogleg Rate (°/100ft)	Build Rate (°/100ft)	Turn Rate (°/100ft)
4,160.0	12.17	207.85	4,097.0	-541.8	-286.2	612.7	0.00	0.00	0.00
4,200.0	12.17	207.85	4,136.1	-549.2	-290.2	621.2	0.00	0.00	0.00
4,240.0	12.17	207.85	4,175.2	-556.7	-294.1	629.6	0.00	0.00	0.00
4,280.0	12.17	207.85	4,214.3	-564.1	-298.1	638.0	0.00	0.00	0.00
4,320.0	12.17	207.85	4,253.4	-571.6	-302.0	646.5	0.00	0.00	0.00
4,360.0	12.17	207.85	4,292.5	-579.0	-305.9	654.9	0.00	0.00	0.00
4,400.0	12.17	207.85	4,331.6	-586.5	-309.9	663.3	0.00	0.00	0.00
4,440.0	12.17	207.85	4,370.7	-594.0	-313.8	671.8	0.00	0.00	0.00
4,466.0	12.17	207.85	4,396.1	-598.8	-316.4	677.2	0.00	0.00	0.00
4,480.0	11.89	207.85	4,409.8	-601.4	-317.7	680.2	2.00	-2.00	0.00
4,520.0	11.09	207.85	4,449.0	-608.4	-321.5	688.1	2.00	-2.00	0.00
4,560.0	10.29	207.85	4,488.3	-615.0	-324.9	695.5	2.00	-2.00	0.00
4,600.0	9.49	207.85	4,527.7	-621.1	-328.1	702.4	2.00	-2.00	0.00
4,640.0	8.69	207.85	4,567.2	-626.6	-331.1	708.7	2.00	-2.00	0.00
4,680.0	7.89	207.85	4,606.8	-631.7	-333.8	714.5	2.00	-2.00	0.00
4,720.0	7.09	207.85	4,646.5	-636.4	-336.2	719.7	2.00	-2.00	0.00
4,760.0	6.29	207.85	4,686.2	-640.5	-338.4	724.4	2.00	-2.00	0.00
4,800.0	5.49	207.85	4,726.0	-644.1	-340.3	728.5	2.00	-2.00	0.00
4,840.0	4.69	207.85	4,765.8	-647.2	-342.0	732.0	2.00	-2.00	0.00
4,880.0	3.89	207.85	4,805.7	-649.9	-343.4	735.0	2.00	-2.00	0.00
4,920.0	3.09	207.85	4,845.6	-652.0	-344.5	737.4	2.00	-2.00	0.00
4,960.0	2.29	207.85	4,885.6	-653.7	-345.4	739.3	2.00	-2.00	0.00
5,000.0	1.49	207.85	4,925.6	-654.9	-346.0	740.6	2.00	-2.00	0.00
5,040.0	0.69	207.85	4,965.5	-655.5	-346.3	741.4	2.00	-2.00	0.00
5,074.5	0.00	0.00	5,000.0	-655.7	-346.4	741.6	2.00	-2.00	441.61
TARGET BHL 541'FSL, 2110'FWL									
5,080.0	0.00	0.00	5,005.5	-655.7	-346.4	741.6	0.00	0.00	0.00
5,120.0	0.00	0.00	5,045.5	-655.7	-346.4	741.6	0.00	0.00	0.00
5,160.0	0.00	0.00	5,085.5	-655.7	-346.4	741.6	0.00	0.00	0.00
5,200.0	0.00	0.00	5,125.5	-655.7	-346.4	741.6	0.00	0.00	0.00
5,240.0	0.00	0.00	5,165.5	-655.7	-346.4	741.6	0.00	0.00	0.00
5,280.0	0.00	0.00	5,205.5	-655.7	-346.4	741.6	0.00	0.00	0.00
5,320.0	0.00	0.00	5,245.5	-655.7	-346.4	741.6	0.00	0.00	0.00
5,360.0	0.00	0.00	5,285.5	-655.7	-346.4	741.6	0.00	0.00	0.00
5,400.0	0.00	0.00	5,325.5	-655.7	-346.4	741.6	0.00	0.00	0.00
5,440.0	0.00	0.00	5,365.5	-655.7	-346.4	741.6	0.00	0.00	0.00
5,480.0	0.00	0.00	5,405.5	-655.7	-346.4	741.6	0.00	0.00	0.00
5,520.0	0.00	0.00	5,445.5	-655.7	-346.4	741.6	0.00	0.00	0.00
5,560.0	0.00	0.00	5,485.5	-655.7	-346.4	741.6	0.00	0.00	0.00
5,600.0	0.00	0.00	5,525.5	-655.7	-346.4	741.6	0.00	0.00	0.00
5,640.0	0.00	0.00	5,565.5	-655.7	-346.4	741.6	0.00	0.00	0.00
5,680.0	0.00	0.00	5,605.5	-655.7	-346.4	741.6	0.00	0.00	0.00
5,720.0	0.00	0.00	5,645.5	-655.7	-346.4	741.6	0.00	0.00	0.00
5,760.0	0.00	0.00	5,685.5	-655.7	-346.4	741.6	0.00	0.00	0.00
5,800.0	0.00	0.00	5,725.5	-655.7	-346.4	741.6	0.00	0.00	0.00
5,840.0	0.00	0.00	5,765.5	-655.7	-346.4	741.6	0.00	0.00	0.00
5,880.0	0.00	0.00	5,805.5	-655.7	-346.4	741.6	0.00	0.00	0.00
5,920.0	0.00	0.00	5,845.5	-655.7	-346.4	741.6	0.00	0.00	0.00
5,960.0	0.00	0.00	5,885.5	-655.7	-346.4	741.6	0.00	0.00	0.00
6,000.0	0.00	0.00	5,925.5	-655.7	-346.4	741.6	0.00	0.00	0.00
6,040.0	0.00	0.00	5,965.5	-655.7	-346.4	741.6	0.00	0.00	0.00
6,080.0	0.00	0.00	6,005.5	-655.7	-346.4	741.6	0.00	0.00	0.00
6,120.0	0.00	0.00	6,045.5	-655.7	-346.4	741.6	0.00	0.00	0.00
6,160.0	0.00	0.00	6,085.5	-655.7	-346.4	741.6	0.00	0.00	0.00

Database:	Landmark	Local Co-ordinate Reference:	Well Magness P25-14D
Company:	NOBLE ENERGY INC WELD COUNTY CO	TVD Reference:	WELL @ 4823.0ft (Original Well Elev)
Project:	SEC.25-T3N-R67W	MD Reference:	WELL @ 4823.0ft (Original Well Elev)
Site:	Magness P25-11D Pad Sec.25-T3N-R67W	North Reference:	True
Well:	Magness P25-14D	Survey Calculation Method:	Minimum Curvature
Wellbore:	Wellbore #1		
Design:	Noble Magness P25-14D Plan #1 (9-02-11)		

Planned Survey									
Measured Depth (ft)	Inclination (°)	Azimuth (°)	Vertical Depth (ft)	+N/-S (ft)	+E/-W (ft)	Vertical Section (ft)	Dogleg Rate (°/100ft)	Build Rate (°/100ft)	Turn Rate (°/100ft)
6,200.0	0.00	0.00	6,125.5	-655.7	-346.4	741.6	0.00	0.00	0.00
6,240.0	0.00	0.00	6,165.5	-655.7	-346.4	741.6	0.00	0.00	0.00
6,280.0	0.00	0.00	6,205.5	-655.7	-346.4	741.6	0.00	0.00	0.00
6,320.0	0.00	0.00	6,245.5	-655.7	-346.4	741.6	0.00	0.00	0.00
6,360.0	0.00	0.00	6,285.5	-655.7	-346.4	741.6	0.00	0.00	0.00
6,400.0	0.00	0.00	6,325.5	-655.7	-346.4	741.6	0.00	0.00	0.00
6,440.0	0.00	0.00	6,365.5	-655.7	-346.4	741.6	0.00	0.00	0.00
6,480.0	0.00	0.00	6,405.5	-655.7	-346.4	741.6	0.00	0.00	0.00
6,520.0	0.00	0.00	6,445.5	-655.7	-346.4	741.6	0.00	0.00	0.00
6,560.0	0.00	0.00	6,485.5	-655.7	-346.4	741.6	0.00	0.00	0.00
6,600.0	0.00	0.00	6,525.5	-655.7	-346.4	741.6	0.00	0.00	0.00
6,640.0	0.00	0.00	6,565.5	-655.7	-346.4	741.6	0.00	0.00	0.00
6,680.0	0.00	0.00	6,605.5	-655.7	-346.4	741.6	0.00	0.00	0.00
6,720.0	0.00	0.00	6,645.5	-655.7	-346.4	741.6	0.00	0.00	0.00
6,760.0	0.00	0.00	6,685.5	-655.7	-346.4	741.6	0.00	0.00	0.00
6,800.0	0.00	0.00	6,725.5	-655.7	-346.4	741.6	0.00	0.00	0.00
6,840.0	0.00	0.00	6,765.5	-655.7	-346.4	741.6	0.00	0.00	0.00
6,880.0	0.00	0.00	6,805.5	-655.7	-346.4	741.6	0.00	0.00	0.00
6,920.0	0.00	0.00	6,845.5	-655.7	-346.4	741.6	0.00	0.00	0.00
6,960.0	0.00	0.00	6,885.5	-655.7	-346.4	741.6	0.00	0.00	0.00
7,000.0	0.00	0.00	6,925.5	-655.7	-346.4	741.6	0.00	0.00	0.00
7,040.0	0.00	0.00	6,965.5	-655.7	-346.4	741.6	0.00	0.00	0.00
7,080.0	0.00	0.00	7,005.5	-655.7	-346.4	741.6	0.00	0.00	0.00
7,084.5	0.00	0.00	7,010.0	-655.7	-346.4	741.6	0.00	0.00	0.00
NOBRARA - LEGAL BOX 400' X 400' 663'FSL & 1985'FWL - TARGET CIRCLE 541'FSL, 2110'FWL									
7,120.0	0.00	0.00	7,045.5	-655.7	-346.4	741.6	0.00	0.00	0.00
7,160.0	0.00	0.00	7,085.5	-655.7	-346.4	741.6	0.00	0.00	0.00
7,200.0	0.00	0.00	7,125.5	-655.7	-346.4	741.6	0.00	0.00	0.00
7,240.0	0.00	0.00	7,165.5	-655.7	-346.4	741.6	0.00	0.00	0.00
7,280.0	0.00	0.00	7,205.5	-655.7	-346.4	741.6	0.00	0.00	0.00
7,320.0	0.00	0.00	7,245.5	-655.7	-346.4	741.6	0.00	0.00	0.00
7,360.0	0.00	0.00	7,285.5	-655.7	-346.4	741.6	0.00	0.00	0.00
7,387.5	0.00	0.00	7,313.0	-655.7	-346.4	741.6	0.00	0.00	0.00
CODELL									
7,400.0	0.00	0.00	7,325.5	-655.7	-346.4	741.6	0.00	0.00	0.00
7,440.0	0.00	0.00	7,365.5	-655.7	-346.4	741.6	0.00	0.00	0.00
7,480.0	0.00	0.00	7,405.5	-655.7	-346.4	741.6	0.00	0.00	0.00
7,520.0	0.00	0.00	7,445.5	-655.7	-346.4	741.6	0.00	0.00	0.00
7,560.0	0.00	0.00	7,485.5	-655.7	-346.4	741.6	0.00	0.00	0.00
7,600.0	0.00	0.00	7,525.5	-655.7	-346.4	741.6	0.00	0.00	0.00
7,640.0	0.00	0.00	7,565.5	-655.7	-346.4	741.6	0.00	0.00	0.00
7,658.5	0.00	0.00	7,584.0	-655.7	-346.4	741.6	0.00	0.00	0.00
D-SAND									
7,680.0	0.00	0.00	7,605.5	-655.7	-346.4	741.6	0.00	0.00	0.00
7,720.0	0.00	0.00	7,645.5	-655.7	-346.4	741.6	0.00	0.00	0.00
7,760.0	0.00	0.00	7,685.5	-655.7	-346.4	741.6	0.00	0.00	0.00
7,800.0	0.00	0.00	7,725.5	-655.7	-346.4	741.6	0.00	0.00	0.00
7,825.5	0.00	0.00	7,751.0	-655.7	-346.4	741.6	0.00	0.00	0.00
J-SAND									
7,840.0	0.00	0.00	7,765.5	-655.7	-346.4	741.6	0.00	0.00	0.00
7,880.0	0.00	0.00	7,805.5	-655.7	-346.4	741.6	0.00	0.00	0.00
7,920.0	0.00	0.00	7,845.5	-655.7	-346.4	741.6	0.00	0.00	0.00
7,960.0	0.00	0.00	7,885.5	-655.7	-346.4	741.6	0.00	0.00	0.00

Database:	Landmark	Local Co-ordinate Reference:	Well Magness P25-14D
Company:	NOBLE ENERGY INC WELD COUNTY CO	TVD Reference:	WELL @ 4823.0ft (Original Well Elev)
Project:	SEC.25-T3N-R67W	MD Reference:	WELL @ 4823.0ft (Original Well Elev)
Site:	Magness P25-11D Pad Sec.25-T3N-R67W	North Reference:	True
Well:	Magness P25-14D	Survey Calculation Method:	Minimum Curvature
Wellbore:	Wellbore #1		
Design:	Noble Magness P25-14D Plan #1 (9-02-11)		

Planned Survey										
Measured Depth (ft)	Inclination (°)	Azimuth (°)	Vertical Depth (ft)	+N/-S (ft)	+E/-W (ft)	Vertical Section (ft)	Dogleg Rate (°/100ft)	Build Rate (°/100ft)	Turn Rate (°/100ft)	
7,975.5	0.00	0.00	7,901.0	-655.7	-346.4	741.6	0.00	0.00	0.00	

Targets										
Target Name	Dip Angle (°)	Dip Dir. (°)	TVD (ft)	+N/-S (ft)	+E/-W (ft)	Northing (ft)	Easting (ft)	Latitude	Longitude	
- hit/miss target										
- Shape										
LEGAL BOX 400' X 400'	0.00	0.00	7,010.0	-533.7	-471.4	1,312,915.26	3,183,903.49	40.190475	-104.841717	
- plan misses target center by 174.7ft at 7084.5ft MD (7010.0 TVD, -655.7 N, -346.4 E)										
- Rectangle (sides W400.0 H400.0 D891.0)										
TARGET BHL 541'FS	0.00	0.00	5,000.0	-655.7	-346.4	1,312,794.17	3,184,029.35	40.190140	-104.841270	
- plan hits target center										
- Point										
TARGET CIRCLE 541'	0.00	0.00	7,010.0	-655.7	-346.4	1,312,794.17	3,184,029.35	40.190140	-104.841270	
- plan hits target center										
- Circle (radius 75.0)										

Casing Points						
Measured Depth (ft)	Vertical Depth (ft)	Name	Casing Diameter (")	Hole Diameter (")		
830.0	830.0	8 5/8"	8-5/8	12-1/4		

Formations						
Measured Depth (ft)	Vertical Depth (ft)	Name	Lithology	Dip (°)	Dip Direction (°)	
7,084.5	7,010.0	NIOBRARA		0.00		
7,387.5	7,313.0	CODELL		0.00		
7,658.5	7,584.0	D-SAND		0.00		
7,825.5	7,751.0	J-SAND		0.00		