

**HALLIBURTON**

---

**WILLIAMS PRODUCTION RMT INC EBUSINE**

---

GM 421-33  
GRAND VALLEY  
Garfield County , Colorado

**Cement Surface Casing**

22-Oct-2010

**Post Job Report**

*The Road to Excellence Starts with Safety*

Sold To #: 300721	Ship To #: 2811772	Quote #:	Sales Order #: 7689174
Customer: WILLIAMS PRODUCTION RMT INC EBUSINE		Customer Rep: Mulherin, Seth	
Well Name: GM	Well #: 421-33	API/UWI #: 05-045-17483	
Field: GRAND VALLEY	City (SAP): PARACHUTE	County/Parish: Garfield	State: Colorado
Lat: N 39.485 deg. OR N 39 deg. 29 min. 5.269 secs.		Long: W 108.122 deg. OR W -109 deg. 52 min. 40.469 secs.	
Contractor: Cyclone Drilling	Rig/Platform Name/Num: Cyclone 17		
Job Purpose: Cement Surface Casing			
Well Type: Development Well		Job Type: Cement Surface Casing	
Sales Person: KOHL, KYLE		Srvc Supervisor: DANIEL, EVERETT	MBU ID Emp #: 337325

**Job Personnel**

HES Emp Name	Exp Hrs	Emp #	HES Emp Name	Exp Hrs	Emp #	HES Emp Name	Exp Hrs	Emp #
CUNNINGHAM, TANNER Wade	7	445660	DANIEL, EVERETT Dean	7	337325	TRIPLETT, MICHEAL Anthony	7	447908

**Equipment**

HES Unit #	Distance-1 way	HES Unit #	Distance-1 way	HES Unit #	Distance-1 way	HES Unit #	Distance-1 way
10296152C	60 mile	10897797	60 mile	10951248	60 mile	11021972	60 mile
11027039	60 mile						

**Job Hours**

Date	On Location Hours	Operating Hours	Date	On Location Hours	Operating Hours	Date	On Location Hours	Operating Hours
10/22/10	7	3						
<b>TOTAL</b>	<b>7</b>	<b>3</b>	<i>Total is the sum of each column separately</i>					

**Job Times**

Formation Name	Formation Depth (MD) Top	Bottom	Called Out	Date	Time	Time Zone
Form Type		BHST	On Location	21 - Oct - 2010	19:30	MST
Job depth MD	1100. m	Job Depth TVD	Job Started	21 - Oct - 2010	23:30	MST
Water Depth		Wk Ht Above Floor	Job Completed	22 - Oct - 2010	04:16	MST
Perforation Depth (MD) From		To	Departed Loc	22 - Oct - 2010	05:23	MST
					06:30	MST

**Well Data**

Description	New / Used	Max pressure MPa	Size mm	ID mm	Weight kg/m	Thread	Grade	Top MD m	Bottom MD m	Top TVD m	Bottom TVD m
<b>Sales/Rental/3<sup>rd</sup> Party (HES)</b>											

Description	Qty	Qty uom	Depth	Supplier
PLUG,CMTG, TOP, 9 5/8, HWE, 8.16 MIN/9.06 MA	1	EA		
R/A DENSOMETER W/CHART RECORDER, /JOB, ZI	1	JOB		
PORT. DAS W/CEMWIN; ACQUIRE W/HES, ZI	1	JOB		
ADC (AUTO DENSITY CTRL) SYS. /JOB, ZI	1	JOB		

**Tools and Accessories**

Type	Size	Qty	Make	Depth	Type	Size	Qty	Make	Depth	Type	Size	Qty	Make
Guide Shoe					Packer					Top Plug			
Float Shoe					Bridge Plug					Bottom Plug			
Float Collar					Retainer					SSR plug set			
Insert Float										Plug Container			
Stage Tool										Centralizers			

**Miscellaneous Materials**

Gelling Agt	Conc	Surfactant	Conc	Acid Type	Qty	Conc %
Treatment Fld	Conc	Inhibitor	Conc	Sand Type	Size	Qty

Fluid Data									
Stage/Plug @: 1									
Fluid #	Stage Type	Fluid Name	Qty	Qty uom	Mixing Density kg/m3	Yield m3/sk	Mix Fluid m3/tonne	Rate m3/min	Total Mix Fluid m3/tonne
1	Water Spacer		20	bbl	8.4	.0	.0	.0	
2	VersaCem Lead Cement	VERSACEM (TM) SYSTEM (452010)	170	sacks	12.3	2.38	13.75		13.75
	13.75 Gal	FRESH WATER							
3	VersaCem Tail Cement	VERSACEM (TM) SYSTEM (452010)	160	sacks	12.8	2.11	11.75		11.75
	11.75 Gal	FRESH WATER							
4	Displacement Fluid		85	bbl	8.4	.0	.0	.0	
Calculated Values		Pressures			Volumes				
Displacement	85	Shut In: Instant		Lost Returns		Cement Slurry	132.1	Pad	
Top Of Cement	SURFACE	5 Min		Cement Returns	15	Actual Displacement	85	Treatment	
Frac Gradient		15 Min		Spacers	20	Load and Breakdown		Total Job	
Rates:									
Circulating	6	Mixing	8	Displacement	10	Avg. Job	8		
Cement Left In Pipe	Amount	34.10 ft	Reason	Shoe Joint					
Frac Ring # 1 @	ID	Frac ring # 2 @	ID	Frac Ring # 3 @	ID	Frac Ring # 4 @	ID		
The Information Stated Herein Is Correct				Customer Representative Signature					

The Road to Excellence Starts with Safety

Sold To #: 300721	Ship To #: 2811772	Quote #:	Sales Order #: 7689174
Customer: WILLIAMS PRODUCTION RMT INC EBUSINE		Customer Rep: Mulherin, Seth	
Well Name: GM	Well #: 421-33	API/UWI #: 05-045-17483	
Field: GRAND VALLEY	City (SAP): PARACHUTE	County/Parish: Garfield	State: Colorado
Legal Description:			
Lat: N 39.485 deg. OR N 39 deg. 29 min. 5.269 secs.		Long: W 108.122 deg. OR W -109 deg. 52 min. 40.469 secs.	
Contractor: Cyclone Drilling		Rig/Platform Name/Num: Cyclone 17	
Job Purpose: Cement Surface Casing			Ticket Amount:
Well Type: Development Well		Job Type: Cement Surface Casing	
Sales Person: KOHL, KYLE		Srvc Supervisor: DANIEL, EVERETT	MBU ID Emp #: 337325

Activity Description	Date/Time	Cht #	Rate m3/ min	Volume m3		Pressure MPa		Comments
				Stage	Total	Tubing	Casing	
Call Out	10/21/2010 19:30							Called out while finishing up previous job
Depart Yard Safety Meeting	10/21/2010 21:45							
Depart from Service Center or Other Site	10/21/2010 22:00							Checked out HES pump (Elite 9),660
Arrive at Location from Service Center	10/21/2010 23:30							Arrived .5 hr. early. Did not start charging time until 0000
Assessment Of Location Safety Meeting	10/21/2010 23:35							
Consult with Co. Rep.	10/21/2010 23:45							Verified calculations and materials on location including H2O and Cement totals
Safety Meeting - Pre Rig-Up	10/22/2010 03:00							Discussed job procedures and safety issues
Rig-Up Equipment	10/22/2010 03:05							
Rig-Up Completed	10/22/2010 03:50							
Safety Meeting - Pre Job	10/22/2010 04:05							Discussed job procedures and safety issues
Start Job	10/22/2010 04:16							
Prime Pumps	10/22/2010 04:16		2	2			54.0	Fresh Water
Test Lines	10/22/2010 04:18		0.5	0.1			2700.0	Fresh Water
Pump Spacer 1	10/22/2010 04:22							Fresh Water

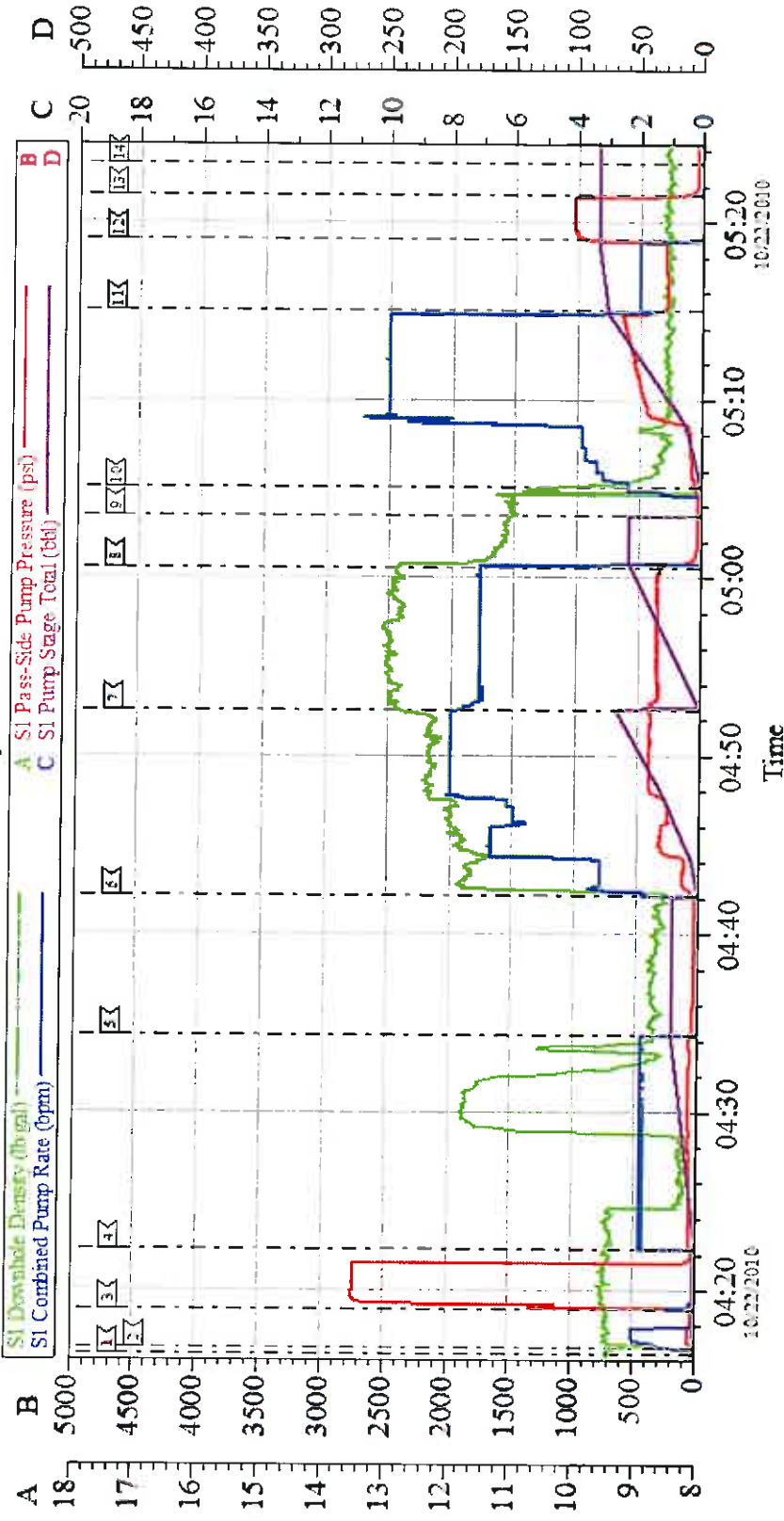
Activity Description	Date/Time	Cht #	Rate m3/ min	Volume m3		Pressure MPa		Comments
				Stage	Total	Tublog	Casing	
Shutdown	10/22/2010 04:34							HT 400 Boost valve stuck open, shut down, identified the problem and fixed it
Pump Lead Cement	10/22/2010 04:42		8	72			490.0	170 sks of VersaCem @ 12.3# - 2.38 yield - 13.75 H2O requirement
Pump Tail Cement	10/22/2010 04:52		8	60.1			355.0	160 sks of VersaCem @ 12.8#-2.11 Yield-11.75 H2O Requirement
Shutdown	10/22/2010 05:00							
Drop Top Plug	10/22/2010 05:03							
Pump Displacement	10/22/2010 05:05		10	85			625.0	Fresh Water
Slow Rate	10/22/2010 05:15		2	75			308.0	Slowed to 2 bpm
Bump Plug	10/22/2010 05:19		2	85			1000.0	Bumped Plug @ calculated displacement and 700 psi over
Check Floats	10/22/2010 05:21							Floats Held
End Job	10/22/2010 05:23							
Safety Meeting - Pre Rig-Down	10/22/2010 05:25							Discussed job procedures and safety issues
Rig-Down Equipment	10/22/2010 05:30							
Rig-Down Completed	10/22/2010 06:15							
Safety Meeting - Departing Location	10/22/2010 06:20							
Depart Location for Service Center or Other Site	10/22/2010 06:30							

Total Depth = 1128 , Total Casing = 1114.73 , Shoe Joint =34.1 , Mud Weight =9.5# . Casing remained stationary throughout job and was chained down. 15 bbls of cement returned to surface. 205.5 bbls of H2O were used for the job and 20 bbls were used for clean up (after the job) The plug landed at calculated displacement and the floats held.

Thank you for using Grand Junction Halliburton Dean Daniel & Crew

# WILLIAMS

## Surface



Event	Time	Event	Time
Start Job	04:18:57	Test Lines	04:18:57
Pump H2O Spitzer	04:22:08	Pump Loss Cement	04:22:07
Pump TMI Cement	04:52:55	Drop Top Plug	05:03:28
Pump H2O Displacement	05:05:07	Ramp Plug	05:19:05
Check Floats	05:21:33	End Job	05:23:00

Customer: Williams	Job Date: 22-Oct-2010	Sales Order #: 7689174
Well Description: GM-421-33	Job Type: Surface	ADC Used: Yes
Company Rep: Seth Mulhern	Cement Supervisor: Dean Damsel	Elite #/Operator: 9 Tanner Cunningham