



02577638

State of Colorado  
Oil and Gas Conservation Commission

1120 Lincoln Street, Suite 801, Denver, Colorado 80203 Phone: (303)894-2100 Fax: (303)894-2109



## SUNDRY NOTICE

Submit original plus one copy. This form is to be used for general, technical and environmental sundry information. For proposed or completed operations, describe in full on Technical Information Page (Page 2 of this form.) Identify well or other facility by API Number or by OGCC Facility ID. Operator shall send an informational copy of all sundry notices for wells located in High Density Areas to the Local Government Designee (Rule 803b.)

RECEIVED

OCT 26 2011

COGCC/Rifle Office

1. OGCC Operator Number: 10079

2. Name of Operator: Antero Resources Piceance Corporation

3. Address: 1625 17th Street, Suite 300

City: Denver

State: CO

Zip: 80202

4. Contact Name

Hannah Knopping

Phone: (303) 357-6412

Fax: (303) 357-7315

Complete the Attachment  
Checklist

OP OGCC

5. API Number 05- 045-18329-00

OGCC Facility ID Number

6. Well/Facility Name: O'Toole

7. Well/Facility Number A5

8. Location (QtrQtr, Sec, Twp, Rng, Meridian): SESE, Section 16, T6S, R92W, 6th P.M.

9. County: Garfield

10. Field Name: Mamm Creek

11. Federal, Indian or State Lease Number:

Survey Plat

Directional Survey

Surface Eqpm Diagram

Technical Info Page

Other

## General Notice

☐ CHANGE OF LOCATION: Attach New Survey Plat

(a change of surface qtrqtr is substantive and requires a new permit)

Change of Surface Footage from Exterior Section Lines:

Change of Surface Footage to Exterior Section Lines:

Change of Bottomhole Footage from Exterior Section Lines:

Change of Bottomhole Footage to Exterior Section Lines:

Bottomhole location Qtr/Qtr, Sec, Twp, Rng, Mer

Latitude

Longitude

Ground Elevation

Distance to nearest property line

Distance to nearest bldg, public rd, utility or RR

Distance to nearest lease line

Is location in a High Density Area (rule 803b)?

Yes/No

Distance to nearest well same formation

Surface owner consultation date:

attach directional survey

## GPS DATA:

Date of Measurement

PDOP Reading

Instrument Operator's Name

☐ CHANGE SPACING UNIT

Formation

Formation Code

Spacing order number

Unit Acreage

Unit configuration

☐ Remove from surface bond

Signed surface use agreement attached

☐ CHANGE OF OPERATOR (prior to drilling):

Effective Date:

Plugging Bond:

☐ Blanket☐ Individual☐ CHANGE WELL NAME

NUMBER

From:

To:

Effective Date:

☐ ABANDONED LOCATION:

Was location ever built?

☐ Yes☐ No

Is site ready for inspection?

☐ Yes☐ No

Date Ready for inspection:

☐ NOTICE OF CONTINUED SHUT IN STATUS

Date well shut in or temporarily abandoned:

Has Production Equipment been removed from site?

☐ Yes☐ No

MIT required if shut in longer than two years. Date of last MIT

☐ SPUD DATE:☐ REQUEST FOR CONFIDENTIAL STATUS (8 mos from date casing set)☐ SUBSEQUENT REPORT OF STAGE, SQUEEZE OR REMEDIAL CEMENT WORK

\*submit cbl and cement job summaries

Method used

Cementing tool setting/perf depth

Cement volume

Cement top

Cement bottom

Date

☐ RECLAMATION:

Attach technical page describing final reclamation procedures per Rule 1004.

Final reclamation will commence on approximately

☐ Final reclamation is completed and site is ready for inspection.

## Technical Engineering/Environmental Notice

☒ Notice of Intent

Approximate Start Date: 11/17/2011

☐ Report of Work Done

Date Work Completed:

Details of work must be described in full on Technical Information Page (Page 2 must be submitted.)

☐ Intent to Recomplete (submit form 2)☐ Request to Vent or Flare☐ E&P Waste Disposal☐ Change Drilling Plans☐ Repair Well☐ Beneficial Reuse of E&P Waste☐ Gross Interval Changed?☐ Rule 502 variance requested☐ Status Update/Change of Remediation Plans☐ Casing/Cementing Program Change☒ Other: Request to Complete

for Spills and Releases

I hereby certify that the statements made in this form are, to the best of my knowledge, true, correct and complete.

Signed:

Date: 10/26/2011

Email: hknopping@anteroresources.com

Print Name:

Hannah Knopping

Title: Permit Representative

COGCC Approved:

Title:

EIT III

Date:

NOV 02 2011

CONDITIONS OF APPROVAL, IF ANY:



## TECHNICAL INFORMATION PAGE



FOR OGCC USE ONLY

RECEIVED

OCT 26 2011

COGCC/Rifle Office

1. OGCC Operator Number: 10079 API Number: 05-045-18329-00
2. Name of Operator: Antero Resources Piceance Corp. OGCC Facility ID #
3. Well/Facility Name: O'Toole Well/Facility Number: A5
4. Location (QtrQtr, Sec, Twp, Rng, Meridian): SESE, Section 16, T6S, R92W, 6th P.M.

This form is to be completed whenever a Sundry Notice is submitted requiring detailed report of work to be performed or completed. This form shall be transmitted within 30 days of work completed as a "subsequent" report and must accompany Form 4, page 1.

5. DESCRIBE PROPOSED OR COMPLETED OPERATIONS

The Otoole A5 has been successfully cemented according to the approved plan and a summary of the braden head monitoring is listed below. One thousand and forty (1,040) sacks of cement were used to cover the Top of Gas as per Colorado Oil and Gas Conservation Commission rules. Appropriate industry practices and procedures were utilized on the Otoole A5 cementing program. The cement bond log indicates good zonal isolation and coverage from TD to 2,200'. I, Jonathon Black, certify that all the information contained within this Sundry is true and correct.

Date Cemented: 10/11/2011  
Plug Bumped: 10/11/2011

WOC Time: 6 hrs  
Temp Log Run: Yes 10/12/2011 05:00 AM

Mandrel set @ 10/11/2011 21:00hrs

## Braden Head Pressures:

6 hours:	0 psig	03:00 AM 10/12/2011
12 hours:	0 psig	09:00 AM 10/12/2011
24 hours:	0 psig	21:00 PM 10/12/2011
48 hours:	0 psig	21:00 PM 10/13/2011
72 hours:	0 psig	21:00 PM 10/14/2011
96 hours:	0 psig	21:00 PM 10/15/2011
120 hours:	0 psig	21:00 PM 10/16/2011
144 hours:	0 psig	21:00 PM 10/17/2011
168 hours:	0 psig	21:00 PM 10/18/2011

TOC 2220'  
KK

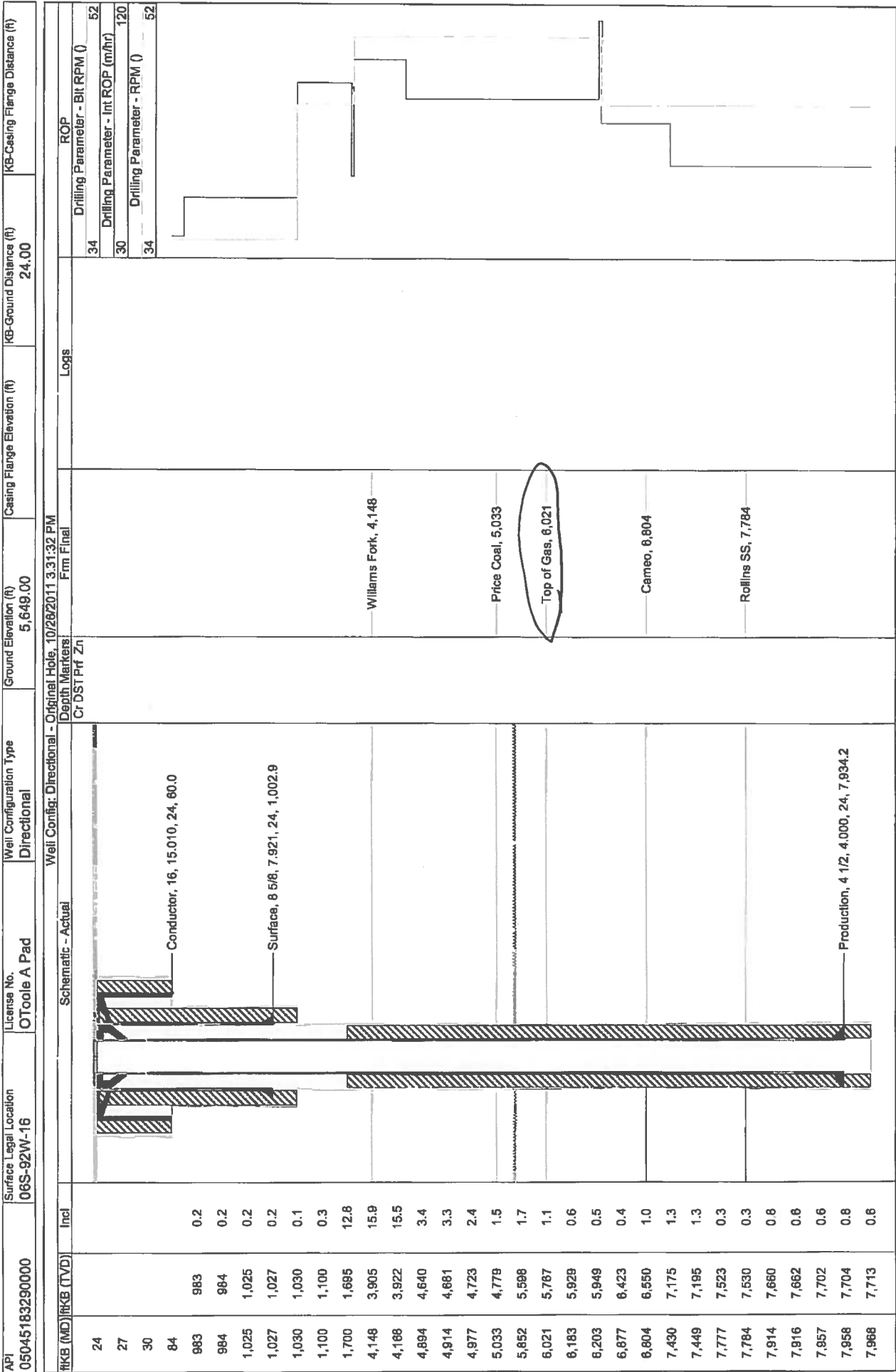
NOTE: Antero received approval from COGCC Engineer, Kevin King, on 10/14/2011, to defer running the CBL on the subject well, per Mamm Creek Notice to Operators policy.

## ATTACHMENTS:

- 1) Cement Bond Log
- 2) 1-Page Temperature Survey
- 3) Wellbore Schematic

Geological Schematic

Well Name: OToole A5



RECEIVED  
OCT 26 2011  
COGCC/Rifle Office



TEMPERATURE LOG

RECEIVED  
OCT 26 2011  
COGCC/Rifle

Company ANTERO RESOURCES CORP.  
Well OTOOLE A5  
Field MAMM CREEK  
County GARFIELD State COLORADO

Location: API #: 05-045-18329-0000 Other Services NONE  
SURFACE: 2278' FSL & 669' FEL  
BOTTOM HOLE: 2278' FSL & 669' FEL  
SEC: 16 TWP: 6S RGE: 92W  
Permanent Datum SURFACE Elevation 5652'  
Log Measured From KELLY BUSHING = 24'  
Drilling Measured From KELLY BUSHING Elevation  
KB: 5676'  
DF: 5675'  
GL: 5652'

Company ANTERO RESOURCES CORP.  
Well OTOOLE A5  
Field MAMM CREEK  
County GARFIELD  
State COLORADO

Date	12 OCT 2011				
Run Number	ONE				
Depth Driller	7968'				
Depth Logger	7640'				
Bottom Logged Interval	7640'				
Top Log Interval	SURFACE				
Open Hole Size	7.875"				
Type Fluid	WATER				
Density / Viscosity	~8.33#				
Max. Recorded Temp.	187.5 f				
Estimated Cement Top	2150'				
Time Well Ready	N/A				
Time Logger on Bottom	N/A				
Equipment Number	FL0602W				
Location	GRAND JUNCTION				
Recorded By	J. ARFSTEN				
Witnessed By	J. CANADY				
Borehole Record					
Run Number	Bit	From	To	Size	
Tubing Record					
Casing Record					
Surface String	Size		Wt/Ft	Top	Bottom
	8.625"		32#	SURFACE	1000'
Prot. String					
Production String	4.5"		11.6#	SURFACE	7958'
Liner					

<<< Fold Here >>>

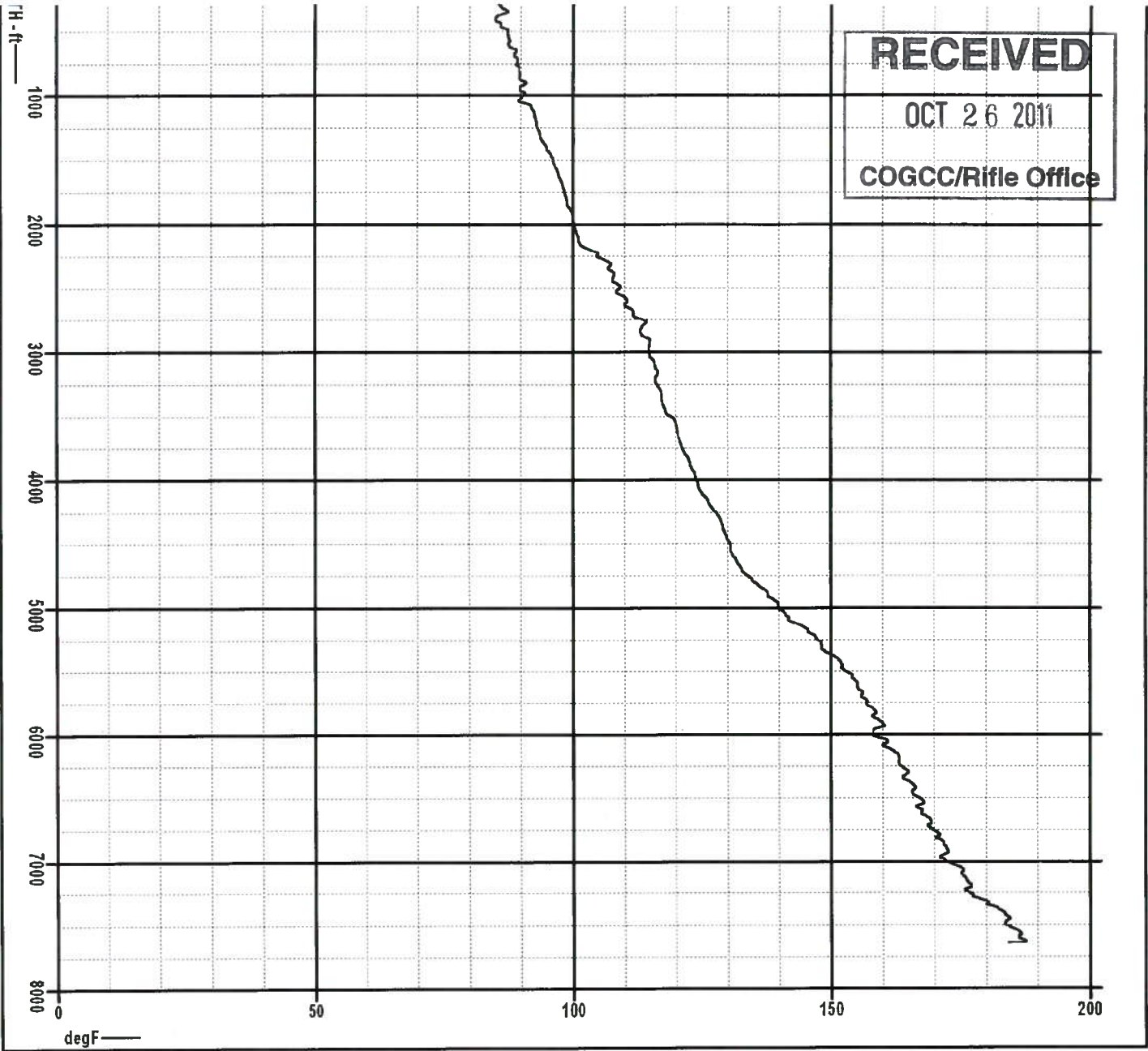
All interpretations are opinions based on inferences from electrical or other measurements and we cannot and do not guarantee the accuracy or correctness of any interpretation, and we shall not, except in the case of gross or willful negligence on our part, be liable or responsible for any loss, costs, damages, or expenses incurred or sustained by anyone resulting from any interpretation made by any of our officers, agents or employees. These interpretations are also subject to our general terms and conditions set out in our current Price Schedule.

Comments

LOG WAS RUN APPROXIMATLY 12 HOURS AFTER CEMENT JOB

WE APPRECIATE YOUR BUSINESS, MESA WIRELINE LLC, GRAND JUNCTION CO. (970) 257-0458





5" = 100'

Database File: otoolea5_temp.db			
Dataset Pathname: pass1			
Presentation Format: temp			
Dataset Creation: Wed Oct 12 01:07:28 2011 by Log Std Casedhole 08121			
Charted by: Depth in Feet scaled 1:240			
-5	CCL	5	55
			TEMP (degF)
			220
			-1
			DTMP (degF)
			1
			TEMP
			(degF)
			55.0