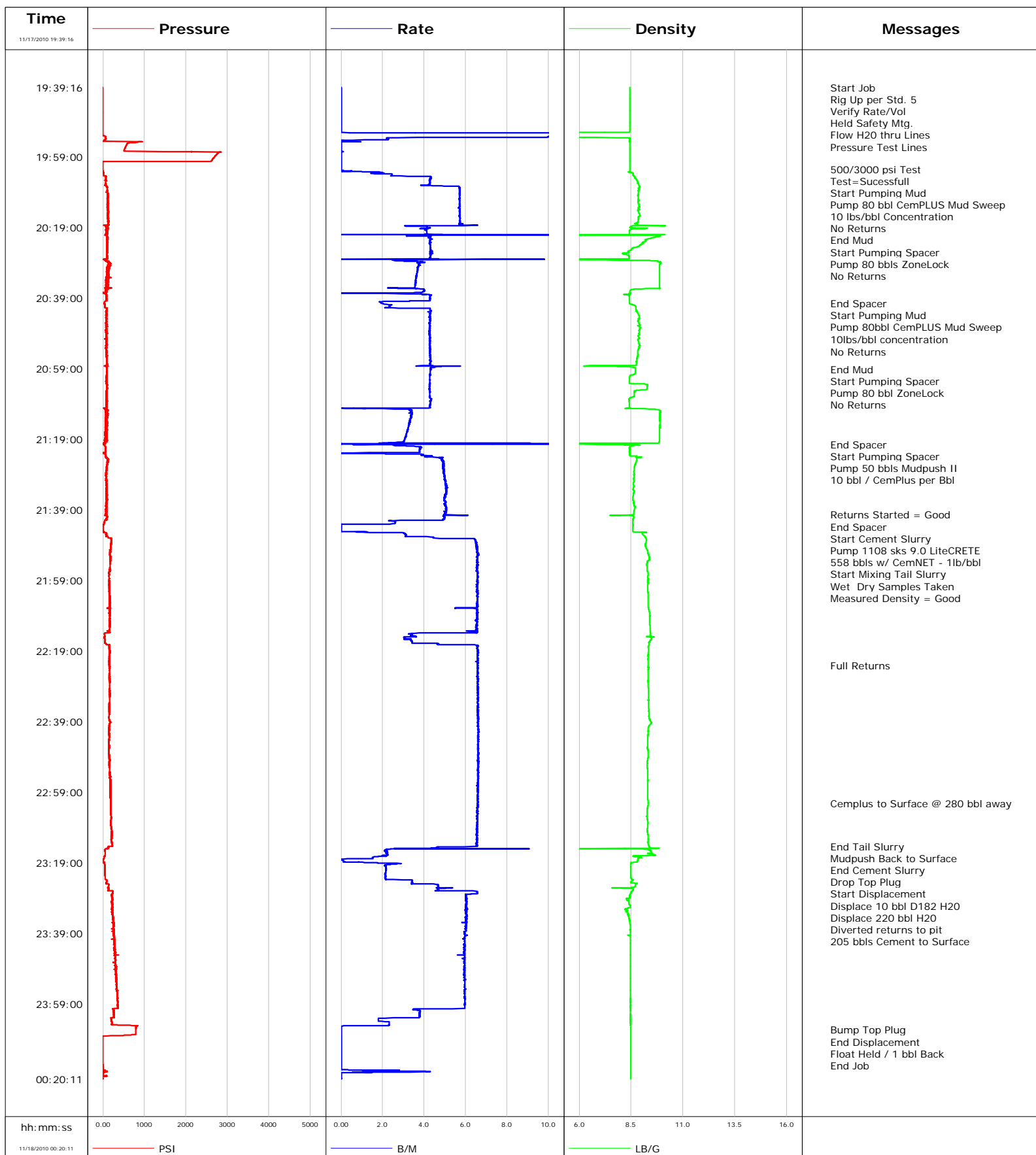


Well SGU 8502D-36 B36 496
Field Story Gulch
Engineer B. Farnham
Country United States

Client Encana Oil Gas
SIR No. 385716
Job Type 9 5/8" Surface
Job Date 11-17-2010





Cementing Service Report

				Customer Encana Oil & Gas		Job Number 385716		
Well SGU 8502D-36 B36 496 8502D-36			Location (legal) Patterson 308		Schlumberger Location Grand Junction		Job Start Nov/17/2010	
Field Story Gulch		Formation Name/Type Shale		Deviation	Bit Size 14.8 in	Well MD 3026.0 ft		Well TVD
County Garfield		State/Province Colorado		BHP	BHST 115 degF	BHCT 95 degF	Pore Press. Gradient	
Well Master 0631227403		API/UWI						
Rig Name Patterson 308	Drilled For Gas	Service Via Land	Casing/Liner					
			Depth, ft	Size, in	Weight, lb/ft	Grade	Thread	
Offshore Zone	Well Class New	Well Type Development	120.0	20.000	94.0			
			3029.0	9.630	36.0			
Drilling Fluid Type Bentonite		Max. Density 8.60 lb/gal	Plastic Viscosity	Tubing/Drill Pipe				
				Depth,	Size,	Weight,	Grade	Thread
Service Line Cementing	Job Type 9 5/8" Surface							
Max. Allowed Tub. Press 3000 psi	Max. Allowed Ann. Press 1500 psi	WH Connection Single Cement head	Perforations/Open Hole					
			Top,	Bottom,		No. of Shots	Total Interval	
Service Instructions								
							Diameter	
			Treat Down Casing	Displacement 230.0 bbl	Packer Type	Packer Depth		
			Tubing Vol.	Casing Vol. 230.0 bbl	Annular Vol. 385.0 bbl	Openhole Vol. 679.0 bbl		
Casing/Tubing Secured <input checked="" type="checkbox"/>		1 Hole Vol. Circulated prior to Cement <input type="checkbox"/>		Casing Tools		Squeeze Job		
Lift Pressure 1499 psi				Shoe Type Guide		Squeeze Type		
Pipe Rotated <input type="checkbox"/>		Pipe Reciprocated <input type="checkbox"/>		Shoe Depth 3026.0 ft		Tool Type		
No. Centralizers		Top Plugs	Bottom Plugs	Stage Tool Type		Tool Depth		
Cement Head Type Single			Stage Tool Depth		Tail Pipe Size			
Job Scheduled For Nov/17/2010 16:00		Arrived on Location Nov/17/2010 16:30	Leave Location Nov/17/2010	Collar Type Float		Tail Pipe Depth		
				Collar Depth 2978.0 ft		Sqz. Total Vol.		
Date	Time 24-hr clock	Treating Pressure PSI	Flow Rate B/M	Density LB/G	Volume BBL	Message		
11/17/2010	19:39:16	-8	0.0	8.44	0.0			
11/17/2010	19:39:19					Start Job		
11/17/2010	19:39:19	-9	0.0	8.44	0.0			
11/17/2010	19:39:22					Rig Up per Std. 5		
11/17/2010	19:39:22					Verify Rate/Vol		
11/17/2010	19:39:22					Held Safety Mtg.		
11/17/2010	19:39:22	-8	0.0	8.43	0.0			
11/17/2010	19:39:46	-8	0.0	8.44	0.0			
11/17/2010	19:40:16	-9	0.0	8.44	0.0			
11/17/2010	19:40:46	-8	0.0	8.44	0.0			
11/17/2010	19:41:16	-9	0.0	8.44	0.0			
11/17/2010	19:41:46	-8	0.0	8.44	0.0			
11/17/2010	19:42:16	-8	0.0	8.44	0.0			
11/17/2010	19:42:46	-8	0.0	8.44	0.0			
11/17/2010	19:43:16	-8	0.0	8.44	0.0			
11/17/2010	19:43:46	-9	0.0	8.44	0.0			
11/17/2010	19:44:16	-8	0.0	8.44	0.0			
11/17/2010	19:44:46	-9	0.0	8.44	0.0			
11/17/2010	19:45:16	-9	0.0	8.44	0.0			
11/17/2010	19:45:46					Flow H2O thru Lines		
11/17/2010	19:45:46	-8	0.0	8.44	0.0			

Well			Field		Job Start		Customer		Job Number	
SGU 8502D-36 B36 496 8502D-36			Story Gulch		Nov/17/2010		Encana Oil & Gas		385716	
Date	Time 24-hr clock	Treating Pressure PSI	Flow Rate B/M	Density LB/G	Volume BBL	Message				
11/17/2010	19:45:57	-11	0.0	8.44	0.0					
11/17/2010	19:46:16	-11	0.0	8.44	0.0					
11/17/2010	19:46:46	-11	0.0	8.44	0.0					
11/17/2010	19:47:16	-10	0.0	8.44	0.0					
11/17/2010	19:47:46	-11	0.0	8.44	0.0					
11/17/2010	19:48:16	-11	0.0	8.44	0.0					
11/17/2010	19:48:46	-11	0.0	8.44	0.0					
11/17/2010	19:49:16	-11	0.0	8.44	0.0					
11/17/2010	19:49:46	-11	0.0	8.44	0.0					
11/17/2010	19:50:16	-11	0.0	8.44	0.0					
11/17/2010	19:50:46	-11	0.0	8.44	0.0					
11/17/2010	19:51:16	-11	0.0	8.44	0.0					
11/17/2010	19:51:46	-11	0.0	8.44	0.0					
11/17/2010	19:52:16	-9	25.0	-0.03	1.8					
11/17/2010	19:52:46	-9	25.0	-0.03	14.3					
11/17/2010	19:53:16	63	10.0	3.77	23.1					
11/17/2010	19:53:46	64	2.2	8.44	26.2					
11/17/2010	19:54:16	31	0.2	8.43	27.2					
11/17/2010	19:54:46	865	0.0	8.43	27.3					
11/17/2010	19:55:16	589	0.0	8.43	27.3					
11/17/2010	19:55:46	563	0.0	8.43	27.3					
11/17/2010	19:56:16	542	0.0	8.43	27.3					
11/17/2010	19:56:46	522	0.0	8.43	27.3					
11/17/2010	19:57:16	507	0.0	8.43	27.3					
11/17/2010	19:57:46	2798	0.0	8.43	27.3					
11/17/2010	19:58:16	2745	0.0	8.43	27.3					
11/17/2010	19:58:46	2709	0.0	8.43	27.3					
11/17/2010	19:59:16	2672	0.0	8.43	27.3					
11/17/2010	19:59:46	2637	0.0	8.43	27.3					
11/17/2010	20:00:16	2606	0.0	8.43	27.3					
11/17/2010	20:00:46	-5	0.0	8.43	27.3					
11/17/2010	20:01:16	-5	0.0	8.43	27.3					
11/17/2010	20:01:46	-6	0.0	8.43	27.3					
11/17/2010	20:02:16	-5	0.0	8.43	27.3					
11/17/2010	20:02:22					500/3000 psi Test				
11/17/2010	20:02:22	-5	0.0	8.43	27.3					
11/17/2010	20:02:23					Test=Sucessfull				
11/17/2010	20:02:23	-5	0.0	8.43	27.3					
11/17/2010	20:02:46	-5	0.0	8.43	0.0					
11/17/2010	20:02:47					Start Pumping Mud				
11/17/2010	20:02:47	-5	0.0	8.43	0.0					
11/17/2010	20:02:50					Pump 80 bbl CemPLUS Mud Sweep				
11/17/2010	20:02:50	-5	0.0	8.43	0.0					
11/17/2010	20:02:51					10 lbs/bbl Concentration				
11/17/2010	20:02:51					No Returns				
11/17/2010	20:02:51	-5	0.0	8.43	0.0					
11/17/2010	20:03:16	11	1.4	8.42	0.1					
11/17/2010	20:03:46	14	1.6	8.60	1.1					
11/17/2010	20:04:16	21	2.4	8.59	2.3					
11/17/2010	20:04:46	73	4.3	8.68	4.1					
11/17/2010	20:05:16	66	4.3	8.74	6.2					
11/17/2010	20:05:46	63	4.3	8.77	8.4					
11/17/2010	20:06:16	61	4.3	8.83	10.5					
11/17/2010	20:06:46	60	4.2	8.86	12.6					

Well			Field		Job Start		Customer		Job Number	
SGU 8502D-36 B36 496 8502D-36			Story Gulch		Nov/17/2010		Encana Oil & Gas		385716	
Date	Time 24-hr clock	Treating Pressure PSI	Flow Rate B/M	Density LB/G	Volume BBL	Message				
11/17/2010	20:07:46	114	5.7	8.89	17.6					
11/17/2010	20:08:16	103	5.7	8.87	20.5					
11/17/2010	20:08:46	105	5.7	8.86	23.3					
11/17/2010	20:09:16	118	5.7	8.84	26.2					
11/17/2010	20:09:46	114	5.7	8.84	29.0					
11/17/2010	20:10:16	114	5.7	8.85	31.9					
11/17/2010	20:10:46	109	5.7	8.85	34.7					
11/17/2010	20:11:16	118	5.7	8.85	37.6					
11/17/2010	20:11:46	116	5.7	8.84	40.4					
11/17/2010	20:12:16	125	5.7	8.85	43.3					
11/17/2010	20:12:46	118	5.7	8.88	46.2					
11/17/2010	20:13:16	107	5.7	8.92	49.0					
11/17/2010	20:13:46	120	5.7	8.84	51.9					
11/17/2010	20:14:16	123	5.7	8.82	54.7					
11/17/2010	20:14:46	128	5.7	8.86	57.6					
11/17/2010	20:15:16	125	5.7	8.92	60.4					
11/17/2010	20:15:46	109	5.7	8.93	63.3					
11/17/2010	20:16:16	126	5.7	8.86	66.2					
11/17/2010	20:16:46	115	5.7	8.85	69.0					
11/17/2010	20:17:16	125	5.7	8.84	71.9					
11/17/2010	20:17:46	120	5.8	8.75	74.8					
11/17/2010	20:18:16	135	5.7	8.81	77.6					
11/17/2010	20:18:37					End Mud				
11/17/2010	20:18:37	108	3.4	8.50	79.4					
11/17/2010	20:18:45					Start Pumping Spacer				
11/17/2010	20:18:45	93	4.2	8.48	79.9					
11/17/2010	20:18:46	93	4.2	8.47	80.0					
11/17/2010	20:19:00					Pump 80 bbls ZoneLock				
11/17/2010	20:19:00					No Returns				
11/17/2010	20:19:00	125	4.1	8.44	81.0					
11/17/2010	20:19:16	83	4.1	9.28	82.1					
11/17/2010	20:19:46	112	4.1	8.44	84.1					
11/17/2010	20:20:16	91	4.1	8.43	86.2					
11/17/2010	20:20:46	78	4.1	8.42	88.2					
11/17/2010	20:21:16	97	3.2	9.91	91.0					
11/17/2010	20:21:46	110	4.3	9.62	92.9					
11/17/2010	20:22:16	111	4.3	9.27	95.0					
11/17/2010	20:22:46	97	4.3	9.23	97.1					
11/17/2010	20:23:16	100	4.3	9.06	99.3					
11/17/2010	20:23:46	108	4.3	8.99	101.4					
11/17/2010	20:24:16	99	4.3	8.89	103.6					
11/17/2010	20:24:46	104	4.3	8.60	105.7					
11/17/2010	20:25:16	101	4.3	8.51	107.9					
11/17/2010	20:25:46	94	4.4	8.39	110.1					
11/17/2010	20:26:16	98	4.3	8.36	112.2					
11/17/2010	20:26:46	100	4.3	8.38	114.4					
11/17/2010	20:27:16	94	4.3	8.40	116.6					
11/17/2010	20:27:46	103	4.3	8.41	118.7					
11/17/2010	20:28:16	45	2.5	7.90	120.6					
11/17/2010	20:28:46	104	3.8	9.91	122.1					
11/17/2010	20:29:16	150	3.8	9.91	124.0					
11/17/2010	20:29:46	138	3.7	9.87	125.9					
11/17/2010	20:30:16	120	3.7	9.87	127.8					
11/17/2010	20:30:46	123	3.7	9.87	129.6					

Well SGU 8502D-36 B36 496 8502D-36			Field Story Gulch		Job Start Nov/17/2010		Customer Encana Oil & Gas		Job Number 385716	
Date	Time 24-hr clock	Treating Pressure PSI	Flow Rate B/M	Density LB/G	Volume BBL	Message				
11/17/2010	20:31:46	118	3.7	9.87	133.3					
11/17/2010	20:32:16	143	3.6	9.86	135.1					
11/17/2010	20:32:46	112	3.6	9.87	137.0					
11/17/2010	20:33:16	86	3.6	9.87	138.8					
11/17/2010	20:33:46	98	3.6	9.87	140.6					
11/17/2010	20:34:16	106	3.6	9.87	142.4					
11/17/2010	20:34:46	77	3.6	9.87	144.2					
11/17/2010	20:35:16	88	3.6	9.87	146.0					
11/17/2010	20:36:16	94	3.4	9.88	149.5					
11/17/2010	20:36:46	80	4.0	8.48	151.4					
11/17/2010	20:37:16	77	3.9	8.43	153.4					
11/17/2010	20:37:46	76	2.2	8.40	154.5					
11/17/2010	20:38:16	85	4.3	8.39	156.5					
11/17/2010	20:38:46	88	4.3	8.42	158.6					
11/17/2010	20:39:16	76	4.3	8.42	160.8					
11/17/2010	20:39:46	83	4.3	8.42	162.9					
11/17/2010	20:40:16	34	1.9	8.42	164.2					
11/17/2010	20:40:33					End Spacer				
11/17/2010	20:40:33	34	2.0	8.43	164.7					
11/17/2010	20:40:46	44	2.1	8.49	165.2					
11/17/2010	20:40:59					Start Pumping Mud				
11/17/2010	20:40:59	48	2.4	8.63	165.7					
11/17/2010	20:41:16	51	2.3	8.71	166.3					
11/17/2010	20:41:18					Pump 80bbl CemPLUS Mud Sweep				
11/17/2010	20:41:18	51	2.3	8.71	166.4					
11/17/2010	20:41:19					10lbs/bbl concentration				
11/17/2010	20:41:19	46	2.4	8.71	166.4					
11/17/2010	20:41:46	36	2.3	8.72	167.5					
11/17/2010	20:42:16	96	4.3	8.74	169.5					
11/17/2010	20:42:46	84	4.3	8.76	171.6					
11/17/2010	20:43:16	84	4.3	8.82	173.8					
11/17/2010	20:43:46	78	4.3	8.86	175.9					
11/17/2010	20:44:16	78	4.3	8.89	178.1					
11/17/2010	20:44:46	73	4.3	8.86	180.2					
11/17/2010	20:45:16	87	4.3	8.86	182.3					
11/17/2010	20:45:46	75	4.3	8.88	184.5					
11/17/2010	20:46:16	79	4.3	8.89	186.6					
11/17/2010	20:46:46	84	4.3	8.84	188.8					
11/17/2010	20:47:16	84	4.3	8.93	190.9					
11/17/2010	20:47:46	75	4.3	8.91	193.0					
11/17/2010	20:48:16	90	4.3	8.88	195.2					
11/17/2010	20:48:46	78	4.3	8.89	197.3					
11/17/2010	20:49:16	81	4.3	8.89	199.4					
11/17/2010	20:49:46	88	4.3	8.84	201.6					
11/17/2010	20:50:16	85	4.3	8.89	203.7					
11/17/2010	20:50:46	84	4.3	8.84	205.9					
11/17/2010	20:51:16	85	4.3	8.86	208.0					
11/17/2010	20:51:46	85	4.3	8.87	210.1					
11/17/2010	20:52:16	76	4.3	8.92	212.3					
11/17/2010	20:52:46	79	4.3	8.87	214.4					
11/17/2010	20:53:16	75	4.3	8.88	216.6					
11/17/2010	20:53:46	81	4.3	8.83	218.7					
11/17/2010	20:54:02					No Returns				
11/17/2010	20:54:02	97	4.3	8.82	219.9					

Well SGU 8502D-36 B36 496 8502D-36			Field Story Gulch		Job Start Nov/17/2010	Customer Encana Oil & Gas	Job Number 385716
Date	Time 24-hr clock	Treating Pressure PSI	Flow Rate B/M	Density LB/G	Volume BBL	Message	
11/17/2010	20:54:46	89	4.3	8.83	223.0		
11/17/2010	20:55:16	89	4.3	8.83	225.1		
11/17/2010	20:55:46	91	4.3	8.80	227.3		
11/17/2010	20:56:16	97	4.3	8.78	229.4		
11/17/2010	20:56:46	96	4.3	8.77	231.6		
11/17/2010	20:57:16	91	4.3	8.76	233.8		
11/17/2010	20:57:46	110	4.3	8.75	235.9		
11/17/2010	20:58:16	58	5.7	7.02	238.1		
11/17/2010	20:58:46	90	4.3	8.70	240.4		
11/17/2010	20:59:06					End Mud	
11/17/2010	20:59:06	94	4.3	8.70	241.8		
11/17/2010	20:59:08					Start Pumping Spacer	
11/17/2010	20:59:08	88	4.3	8.70	242.0		
11/17/2010	20:59:10					Pump 80 bbl ZoneLock	
11/17/2010	20:59:10	87	4.3	8.71	242.1		
11/17/2010	20:59:11					No Returns	
11/17/2010	20:59:11	86	4.3	8.70	242.2		
11/17/2010	20:59:16	103	4.3	8.70	242.6		
11/17/2010	20:59:46	97	4.3	8.70	244.7		
11/17/2010	21:00:16	95	4.3	8.70	246.9		
11/17/2010	21:00:46	102	4.3	8.58	249.0		
11/17/2010	21:01:16	86	4.3	8.43	251.1		
11/17/2010	21:01:46	80	4.3	8.43	253.3		
11/17/2010	21:02:16	96	4.3	8.43	255.4		
11/17/2010	21:02:46	86	4.3	8.43	257.6		
11/17/2010	21:03:16	80	4.3	8.64	259.7		
11/17/2010	21:03:46	94	4.3	9.29	261.8		
11/17/2010	21:04:16	97	4.3	9.28	264.0		
11/17/2010	21:04:46	86	4.3	9.27	266.1		
11/17/2010	21:05:16	89	4.3	8.70	268.2		
11/17/2010	21:05:46	90	4.3	8.67	270.4		
11/17/2010	21:06:16	86	4.3	8.66	272.5		
11/17/2010	21:06:46	93	4.3	8.65	274.6		
11/17/2010	21:07:16	94	4.3	8.45	276.8		
11/17/2010	21:07:46	91	4.3	8.41	278.9		
11/17/2010	21:08:16	83	4.3	8.42	281.1		
11/17/2010	21:08:46	99	4.3	8.42	283.2		
11/17/2010	21:09:16	86	4.3	8.42	285.4		
11/17/2010	21:09:46	81	4.3	8.42	287.5		
11/17/2010	21:10:16	57	1.1	8.26	289.2		
11/17/2010	21:10:46	121	3.4	9.86	290.6		
11/17/2010	21:11:16	75	3.4	9.90	292.3		
11/17/2010	21:11:46	67	3.4	9.88	294.0		
11/17/2010	21:12:16	94	3.4	9.88	295.7		
11/17/2010	21:12:46	95	3.4	9.88	297.4		
11/17/2010	21:13:16	64	3.3	9.88	299.1		
11/17/2010	21:13:46	69	3.3	9.88	300.7		
11/17/2010	21:14:16	72	3.3	9.88	302.4		
11/17/2010	21:14:46	72	3.3	9.88	304.0		
11/17/2010	21:15:16	71	3.3	9.88	305.7		
11/17/2010	21:15:46	98	3.2	9.88	307.3		
11/17/2010	21:16:16	71	3.2	9.88	308.9		
11/17/2010	21:16:46	70	3.2	9.88	310.5		
11/17/2010	21:17:16	103	3.2	9.87	312.1		

Well SGU 8502D-36 B36 496 8502D-36			Field Story Gulch	Job Start Nov/17/2010	Customer Encana Oil & Gas	Job Number 385716
Date	Time 24-hr clock	Treating Pressure PSI	Flow Rate B/M	Density LB/G	Volume BBL	Message
11/17/2010	21:18:16	83	3.1	9.87	315.2	
11/17/2010	21:18:46	38	3.1	9.87	316.8	
11/17/2010	21:19:16	79	3.0	9.86	318.3	
11/17/2010	21:19:46	42	3.0	9.85	319.8	
11/17/2010	21:20:16	9	17.2	0.16	322.0	
11/17/2010	21:20:22					End Spacer
11/17/2010	21:20:22	16	7.3	1.27	322.6	
11/17/2010	21:20:24					Start Pumping Spacer
11/17/2010	21:20:24	15	12.6	3.17	323.2	
11/17/2010	21:20:31					Pump 50 bbls Mudpush II
11/17/2010	21:20:31					10 bbl / CemPlus per Bbl
11/17/2010	21:20:31	34	0.6	8.53	323.7	
11/17/2010	21:20:46	46	2.8	8.60	324.2	
11/17/2010	21:21:16	65	3.9	8.43	325.9	
11/17/2010	21:21:46	61	3.8	8.43	327.9	
11/17/2010	21:22:16	61	3.8	8.43	329.8	
11/17/2010	21:22:46	66	3.8	8.43	331.6	
11/17/2010	21:23:16	62	3.9	8.44	332.4	
11/17/2010	21:23:46	66	4.1	8.76	334.4	
11/17/2010	21:24:16	86	4.8	8.76	336.6	
11/17/2010	21:24:46	134	4.9	8.77	339.0	
11/17/2010	21:25:16	117	4.9	8.75	341.4	
11/17/2010	21:25:46	100	4.9	8.72	343.9	
11/17/2010	21:26:16	103	4.9	8.69	346.4	
11/17/2010	21:26:46	101	5.0	8.66	348.8	
11/17/2010	21:27:16	86	4.9	8.66	351.3	
11/17/2010	21:27:46	83	4.9	8.65	353.8	
11/17/2010	21:28:16	75	5.0	8.63	356.2	
11/17/2010	21:28:46	66	5.0	8.65	358.7	
11/17/2010	21:29:16	72	5.0	8.66	361.2	
11/17/2010	21:29:46	82	5.0	8.64	363.7	
11/17/2010	21:30:16	82	5.0	8.62	366.2	
11/17/2010	21:30:46	93	5.0	8.64	368.7	
11/17/2010	21:31:16	81	5.0	8.62	371.2	
11/17/2010	21:31:46	92	5.1	8.60	373.7	
11/17/2010	21:32:16	93	5.0	8.63	376.2	
11/17/2010	21:32:46	85	5.1	8.61	378.8	
11/17/2010	21:33:16	91	5.1	8.60	381.3	
11/17/2010	21:33:46	96	5.1	8.64	383.9	
11/17/2010	21:34:16	91	5.1	8.62	386.4	
11/17/2010	21:34:46	88	5.0	8.60	388.9	
11/17/2010	21:35:16	83	5.0	8.59	391.4	
11/17/2010	21:35:46	80	5.0	8.58	393.9	
11/17/2010	21:36:16	96	5.0	8.58	396.4	
11/17/2010	21:36:46	92	5.0	8.63	398.9	
11/17/2010	21:37:16	92	5.0	8.64	401.4	
11/17/2010	21:37:46	94	5.0	8.65	403.9	
11/17/2010	21:38:16	94	5.1	8.69	406.4	
11/17/2010	21:38:46	75	5.1	8.67	409.0	
11/17/2010	21:39:16	72	5.1	8.65	411.5	
11/17/2010	21:39:46	94	5.0	8.64	414.0	
11/17/2010	21:40:12					Returns Started = Good
11/17/2010	21:40:12	89	5.0	8.62	416.2	
11/17/2010	21:40:16	73	5.0	8.62	416.5	

Well SGU 8502D-36 B36 496 8502D-36			Field Story Gulch	Job Start Nov/17/2010	Customer Encana Oil & Gas	Job Number 385716
Date	Time 24-hr clock	Treating Pressure PSI	Flow Rate B/M	Density LB/G	Volume BBL	Message
11/17/2010	21:41:16	93	5.0	8.62	421.6	
11/17/2010	21:41:46	74	4.9	8.60	424.1	
11/17/2010	21:42:16	36	2.6	8.58	425.8	
11/17/2010	21:42:46	35	2.6	8.59	427.1	
11/17/2010	21:43:16	11	0.0	8.60	427.8	
11/17/2010	21:43:46	7	0.0	8.59	427.8	
11/17/2010	21:43:50					End Spacer
11/17/2010	21:43:50	7	0.0	8.59	427.8	
11/17/2010	21:43:54					Start Cement Slurry
11/17/2010	21:43:54	9	0.0	8.59	427.8	
11/17/2010	21:44:14					Pump 1108 sks 9.0 LiteCRETE
11/17/2010	21:44:14	8	0.0	8.59	427.8	
11/17/2010	21:44:16	8	0.0	8.59	427.8	
11/17/2010	21:44:36					558 bbls w/ CemNET - 1lb/bbl
11/17/2010	21:44:36	8	0.0	8.59	427.8	
11/17/2010	21:44:46	9	0.0	8.59	427.8	
11/17/2010	21:45:16	19	1.2	8.78	427.9	
11/17/2010	21:45:46	83	3.1	9.04	429.1	
11/17/2010	21:46:12					Start Mixing Tail Slurry
11/17/2010	21:46:12	86	3.1	9.09	430.4	
11/17/2010	21:46:16	78	3.1	9.11	430.6	
11/17/2010	21:46:21					Wet Dry Samples Taken
11/17/2010	21:46:21	81	3.1	9.12	430.9	
11/17/2010	21:46:46	122	4.5	9.19	432.4	
11/17/2010	21:46:53					Measured Density = Good
11/17/2010	21:46:53	121	4.4	9.20	432.9	
11/17/2010	21:47:16	200	6.4	9.23	434.9	
11/17/2010	21:47:46	195	6.5	9.23	438.2	
11/17/2010	21:48:16	198	6.5	9.22	441.4	
11/17/2010	21:48:46	189	6.5	9.19	444.7	
11/17/2010	21:49:16	184	6.5	9.19	447.9	
11/17/2010	21:49:46	187	6.6	9.22	451.2	
11/17/2010	21:50:16	183	6.5	9.27	454.5	
11/17/2010	21:50:46	173	6.6	9.29	457.8	
11/17/2010	21:51:16	164	6.6	9.32	461.0	
11/17/2010	21:51:46	166	6.6	9.36	464.3	
11/17/2010	21:52:16	177	6.5	9.38	467.6	
11/17/2010	21:52:46	178	6.5	9.37	470.9	
11/17/2010	21:53:16	184	6.6	9.39	474.2	
11/17/2010	21:53:46	175	6.6	9.29	477.5	
11/17/2010	21:54:16	175	6.6	9.27	480.8	
11/17/2010	21:54:46	176	6.6	9.26	484.0	
11/17/2010	21:55:16	171	6.5	9.27	487.3	
11/17/2010	21:55:46	173	6.5	9.27	490.6	
11/17/2010	21:56:16	172	6.5	9.28	493.9	
11/17/2010	21:56:46	146	6.6	9.32	497.2	
11/17/2010	21:57:16	150	6.6	9.32	500.4	
11/17/2010	21:57:46	149	6.6	9.31	503.7	
11/17/2010	21:58:16	153	6.6	9.31	507.0	
11/17/2010	21:58:46	150	6.6	9.31	510.3	
11/17/2010	21:59:16	157	6.5	9.31	513.6	
11/17/2010	21:59:46	157	6.6	9.31	516.9	
11/17/2010	22:00:16	157	6.6	9.30	520.2	
11/17/2010	22:00:46	161	6.6	9.30	523.4	

Well SGU 8502D-36 B36 496 8502D-36			Field Story Gulch		Job Start Nov/17/2010		Customer Encana Oil & Gas		Job Number 385716	
Date	Time 24-hr clock	Treating Pressure PSI	Flow Rate B/M	Density LB/G	Volume BBL	Message				
11/17/2010	22:01:46	157	6.5	9.30	530.0					
11/17/2010	22:02:16	161	6.6	9.31	533.3					
11/17/2010	22:02:46	163	6.6	9.32	536.6					
11/17/2010	22:03:16	166	6.6	9.33	539.9					
11/17/2010	22:03:46	170	6.5	9.33	543.1					
11/17/2010	22:04:16	170	6.6	9.32	546.4					
11/17/2010	22:04:46	169	6.6	9.32	549.7					
11/17/2010	22:05:16	169	6.6	9.33	553.0					
11/17/2010	22:05:46	166	6.5	9.32	556.3					
11/17/2010	22:06:16	166	6.6	9.32	559.5					
11/17/2010	22:06:46	127	5.6	9.34	562.8					
11/17/2010	22:07:16	166	6.6	9.35	565.9					
11/17/2010	22:07:46	166	6.6	9.38	569.2					
11/17/2010	22:08:16	142	6.5	9.39	572.5					
11/17/2010	22:08:46	171	6.6	9.40	575.7					
11/17/2010	22:09:16	164	6.6	9.40	579.0					
11/17/2010	22:09:46	163	6.6	9.40	582.3					
11/17/2010	22:10:16	161	6.5	9.40	585.6					
11/17/2010	22:10:46	157	6.6	9.40	588.9					
11/17/2010	22:11:16	156	6.5	9.39	592.1					
11/17/2010	22:11:46	158	6.5	9.41	595.4					
11/17/2010	22:12:16	157	6.5	9.42	598.7					
11/17/2010	22:12:46	156	6.6	9.42	601.9					
11/17/2010	22:13:16	157	6.6	9.43	605.2					
11/17/2010	22:13:46	146	6.4	9.44	608.4					
11/17/2010	22:14:16	41	3.4	9.44	610.5					
11/17/2010	22:14:46	47	3.5	9.46	612.2					
11/17/2010	22:15:16	35	3.1	9.45	613.8					
11/17/2010	22:15:46	58	3.3	9.48	615.4					
11/17/2010	22:16:16	49	3.4	9.39	617.1					
11/17/2010	22:16:46	74	3.5	9.37	618.8					
11/17/2010	22:17:16	149	6.3	9.38	621.2					
11/17/2010	22:17:46	146	6.6	9.33	624.5					
11/17/2010	22:18:16	163	6.6	9.34	627.7					
11/17/2010	22:18:46	166	6.6	9.34	631.0					
11/17/2010	22:19:16	171	6.6	9.35	634.3					
11/17/2010	22:19:46	165	6.6	9.33	637.6					
11/17/2010	22:20:16	157	6.6	9.32	640.9					
11/17/2010	22:20:46	156	6.6	9.32	644.2					
11/17/2010	22:21:16	157	6.6	9.31	647.5					
11/17/2010	22:21:46	151	6.6	9.32	650.8					
11/17/2010	22:22:16	151	6.6	9.32	654.1					
11/17/2010	22:22:46	151	6.6	9.32	657.3					
11/17/2010	22:23:06					Full Returns				
11/17/2010	22:23:06	160	6.6	9.33	659.5					
11/17/2010	22:23:16	154	6.6	9.33	660.6					
11/17/2010	22:23:46	157	6.6	9.33	663.9					
11/17/2010	22:24:16	163	6.6	9.33	667.2					
11/17/2010	22:24:46	161	6.6	9.33	670.5					
11/17/2010	22:25:16	165	6.6	9.33	673.8					
11/17/2010	22:25:46	163	6.6	9.32	677.1					
11/17/2010	22:26:16	158	6.5	9.32	680.4					
11/17/2010	22:26:46	161	6.6	9.32	683.7					
11/17/2010	22:27:16	163	6.6	9.32	687.0					

Well SGU 8502D-36 B36 496 8502D-36			Field Story Gulch		Job Start Nov/17/2010		Customer Encana Oil & Gas		Job Number 385716	
Date	Time 24-hr clock	Treating Pressure PSI	Flow Rate B/M	Density LB/G	Volume BBL	Message				
11/17/2010	22:28:16	158	6.6	9.33	693.6					
11/17/2010	22:28:46	159	6.6	9.33	696.8					
11/17/2010	22:29:16	159	6.6	9.33	700.1					
11/17/2010	22:29:46	165	6.6	9.34	703.4					
11/17/2010	22:30:16	167	6.6	9.34	706.7					
11/17/2010	22:30:46	164	6.6	9.34	710.0					
11/17/2010	22:31:16	162	6.6	9.34	713.3					
11/17/2010	22:31:46	161	6.6	9.34	716.6					
11/17/2010	22:32:16	161	6.6	9.34	719.9					
11/17/2010	22:32:46	161	6.6	9.34	723.2					
11/17/2010	22:33:16	165	6.6	9.34	726.5					
11/17/2010	22:33:46	163	6.6	9.34	729.8					
11/17/2010	22:34:16	158	6.6	9.35	733.1					
11/17/2010	22:34:46	160	6.6	9.35	736.4					
11/17/2010	22:35:16	159	6.6	9.36	739.7					
11/17/2010	22:35:46	159	6.6	9.36	743.0					
11/17/2010	22:36:16	160	6.6	9.36	746.3					
11/17/2010	22:36:46	149	6.6	9.37	749.6					
11/17/2010	22:37:16	145	6.6	9.36	752.9					
11/17/2010	22:37:46	150	6.6	9.37	756.1					
11/17/2010	22:38:16	150	6.6	9.39	759.4					
11/17/2010	22:38:46	165	6.6	9.43	762.7					
11/17/2010	22:39:16	182	6.6	9.50	766.0					
11/17/2010	22:39:46	163	6.6	9.44	769.3					
11/17/2010	22:40:16	153	6.6	9.35	772.6					
11/17/2010	22:40:46	143	6.6	9.33	775.9					
11/17/2010	22:41:16	155	6.6	9.32	779.2					
11/17/2010	22:41:46	151	6.6	9.33	782.6					
11/17/2010	22:42:16	157	6.6	9.32	785.9					
11/17/2010	22:42:46	159	6.6	9.31	789.2					
11/17/2010	22:43:16	153	6.6	9.30	792.5					
11/17/2010	22:43:46	146	6.6	9.30	795.8					
11/17/2010	22:44:16	143	6.6	9.30	799.1					
11/17/2010	22:44:46	139	6.6	9.30	802.4					
11/17/2010	22:45:16	139	6.6	9.30	805.7					
11/17/2010	22:45:46	144	6.6	9.29	809.0					
11/17/2010	22:46:16	146	6.6	9.29	812.3					
11/17/2010	22:46:46	146	6.6	9.29	815.6					
11/17/2010	22:47:16	136	6.6	9.32	818.9					
11/17/2010	22:47:46	140	6.6	9.33	822.2					
11/17/2010	22:48:16	145	6.6	9.31	825.5					
11/17/2010	22:48:46	152	6.6	9.33	828.8					
11/17/2010	22:49:16	158	6.6	9.32	832.1					
11/17/2010	22:49:46	159	6.6	9.29	835.4					
11/17/2010	22:50:16	156	6.6	9.28	838.7					
11/17/2010	22:50:46	150	6.6	9.29	842.0					
11/17/2010	22:51:16	154	6.6	9.28	845.3					
11/17/2010	22:51:46	155	6.6	9.28	848.6					
11/17/2010	22:52:16	156	6.6	9.29	851.9					
11/17/2010	22:52:46	162	6.6	9.29	855.2					
11/17/2010	22:53:16	171	6.6	9.30	858.5					
11/17/2010	22:53:46	170	6.6	9.30	861.8					
11/17/2010	22:54:16	177	6.6	9.30	865.1					
11/17/2010	22:54:46	177	6.6	9.31	868.4					

Well SGU 8502D-36 B36 496 8502D-36			Field Story Gulch		Job Start Nov/17/2010	Customer Encana Oil & Gas	Job Number 385716
Date	Time 24-hr clock	Treating Pressure PSI	Flow Rate B/M	Density LB/G	Volume BBL	Message	
11/17/2010	22:55:46	174	6.6	9.31	875.0		
11/17/2010	22:56:16	179	6.6	9.31	878.3		
11/17/2010	22:56:46	181	6.6	9.30	881.6		
11/17/2010	22:57:16	178	6.6	9.30	884.9		
11/17/2010	22:57:46	181	6.6	9.30	888.2		
11/17/2010	22:58:16	181	6.6	9.30	891.5		
11/17/2010	22:58:46	181	6.6	9.30	894.8		
11/17/2010	22:59:16	184	6.6	9.30	898.1		
11/17/2010	22:59:46	187	6.6	9.30	901.4		
11/17/2010	23:00:16	184	6.6	9.30	904.7		
11/17/2010	23:00:46	191	6.6	9.30	908.0		
11/17/2010	23:01:16	192	6.6	9.32	911.3		
11/17/2010	23:01:46	188	6.6	9.32	914.6		
11/17/2010	23:02:05					Cemplus to Surface @ 280 bbl away	
11/17/2010	23:02:05	185	6.6	9.33	916.6		
11/17/2010	23:02:16	189	6.6	9.33	917.8		
11/17/2010	23:02:46	187	6.6	9.32	921.1		
11/17/2010	23:03:16	182	6.6	9.30	924.4		
11/17/2010	23:03:46	186	6.6	9.28	927.7		
11/17/2010	23:04:16	195	6.6	9.28	931.0		
11/17/2010	23:04:46	196	6.6	9.27	934.3		
11/17/2010	23:05:16	198	6.6	9.27	937.6		
11/17/2010	23:05:46	196	6.5	9.26	940.9		
11/17/2010	23:06:16	199	6.5	9.27	944.1		
11/17/2010	23:06:46	195	6.6	9.29	947.4		
11/17/2010	23:07:16	189	6.6	9.31	950.7		
11/17/2010	23:07:46	181	6.5	9.31	954.0		
11/17/2010	23:08:16	191	6.5	9.30	957.3		
11/17/2010	23:08:46	195	6.6	9.30	960.5		
11/17/2010	23:09:16	200	6.6	9.29	963.8		
11/17/2010	23:09:46	209	6.6	9.28	967.1		
11/17/2010	23:10:16	212	6.6	9.29	970.4		
11/17/2010	23:10:46	211	6.6	9.30	973.6		
11/17/2010	23:11:16	207	6.5	9.32	976.9		
11/17/2010	23:11:46	207	6.6	9.32	980.2		
11/17/2010	23:12:16	205	6.5	9.33	983.5		
11/17/2010	23:12:46	210	6.6	9.32	986.7		
11/17/2010	23:13:16	211	6.5	9.31	990.0		
11/17/2010	23:13:46	225	6.5	9.33	993.3		
11/17/2010	23:14:16	218	6.6	9.36	996.5		
11/17/2010	23:14:20					End Tail Slurry	
11/17/2010	23:14:20	229	6.5	9.37	997.0		
11/17/2010	23:14:46	138	4.6	9.42	999.1		
11/17/2010	23:14:53					Mudpush Back to Surface	
11/17/2010	23:14:53	140	4.6	9.42	999.7		
11/17/2010	23:15:16	50	2.1	9.37	1001.0		
11/17/2010	23:15:46	53	2.2	9.45	1002.1		
11/17/2010	23:16:16	51	2.2	9.50	1003.2		
11/17/2010	23:16:19					End Cement Slurry	
11/17/2010	23:16:19	52	2.2	9.35	1003.3		
11/17/2010	23:16:46	54	2.2	9.61	1004.3		
11/17/2010	23:17:16	32	1.7	8.68	1005.3		
11/17/2010	23:17:46	27	1.5	8.85	1006.1		
11/17/2010	23:18:16	5	0.1	8.82	1006.3		

Well SGU 8502D-36 B36 496 8502D-36			Field Story Gulch		Job Start Nov/17/2010	Customer Encana Oil & Gas	Job Number 385716
Date	Time 24-hr clock	Treating Pressure PSI	Flow Rate B/M	Density LB/G	Volume BBL	Message	
11/17/2010	23:19:16	44	2.8	8.50	1007.2		
11/17/2010	23:19:46	49	2.1	8.49	1008.4		
11/17/2010	23:20:16	46	2.2	8.48	1009.5		
11/17/2010	23:20:30					Drop Top Plug	
11/17/2010	23:20:30	46	2.2	8.48	1010.0		
11/17/2010	23:20:31					Start Displacement	
11/17/2010	23:20:31	46	2.2	8.48	1010.0		
11/17/2010	23:20:46	47	2.2	8.48	1010.5		
11/17/2010	23:20:53					Displace 10 bbl D182 H20	
11/17/2010	23:20:53					Displace 220 bbl H20	
11/17/2010	23:20:53	47	2.2	8.48	1010.8		
11/17/2010	23:21:16	46	2.2	8.48	1011.6		
11/17/2010	23:21:20					Diverted returns to pit	
11/17/2010	23:21:20	45	2.2	8.48	1011.8		
11/17/2010	23:21:46	46	2.1	8.48	1012.7		
11/17/2010	23:22:16	48	2.1	8.49	1013.8		
11/17/2010	23:22:46	50	2.2	8.49	1014.8		
11/17/2010	23:23:16	52	2.1	8.50	1015.9		
11/17/2010	23:23:46	81	2.5	8.58	1017.0		
11/17/2010	23:24:16	93	3.4	8.52	1018.7		
11/17/2010	23:24:46	79	3.4	8.71	1020.4		
11/17/2010	23:25:16	142	4.7	8.71	1022.4		
11/17/2010	23:25:46	138	4.7	8.68	1024.8		
11/17/2010	23:26:16	128	4.7	8.55	1027.2		
11/17/2010	23:26:46	136	4.7	8.59	1029.5		
11/17/2010	23:27:16	237	6.6	8.51	1032.4		
11/17/2010	23:27:46	231	6.5	8.47	1035.7		
11/17/2010	23:28:16	216	6.0	8.44	1038.8		
11/17/2010	23:28:46	220	6.0	8.43	1041.8		
11/17/2010	23:29:16	229	6.0	8.31	1044.8		
11/17/2010	23:29:46	225	6.0	8.37	1047.8		
11/17/2010	23:30:16	223	6.1	8.38	1050.8		
11/17/2010	23:30:46	228	6.0	8.40	1053.8		
11/17/2010	23:31:16	233	6.0	8.46	1056.9		
11/17/2010	23:31:46	240	6.1	8.36	1059.9		
11/17/2010	23:32:16	209	6.1	8.21	1062.9		
11/17/2010	23:32:46	225	6.1	8.31	1065.9		
11/17/2010	23:33:16	225	6.0	8.34	1068.9		
11/17/2010	23:33:46	247	6.1	8.37	1071.9		
11/17/2010	23:34:16	234	6.0	8.39	1075.0		
11/17/2010	23:34:46	251	6.0	8.41	1078.0		
11/17/2010	23:35:16	249	6.0	8.42	1081.0		
11/17/2010	23:35:46	253	6.1	8.43	1084.0		
11/17/2010	23:36:16	263	6.0	8.45	1087.0		
11/17/2010	23:36:46	248	6.0	8.46	1090.0		
11/17/2010	23:37:16	255	6.0	8.46	1093.0		
11/17/2010	23:37:46	255	6.0	8.46	1096.0		
11/17/2010	23:38:16	258	6.0	8.46	1099.0		
11/17/2010	23:38:46	257	6.0	8.47	1102.0		
11/17/2010	23:39:16	260	6.0	8.47	1105.0		
11/17/2010	23:39:46	262	6.0	8.46	1108.0		
11/17/2010	23:40:16	269	6.0	8.47	1111.0		
11/17/2010	23:40:32					205 bbls Cement to Surface	
11/17/2010	23:40:32	270	5.9	8.47	1112.6		

Well SGU 8502D-36 B36 496 8502D-36			Field Story Gulch		Job Start Nov/17/2010	Customer Encana Oil & Gas	Job Number 385716
Date	Time 24-hr clock	Treating Pressure PSI	Flow Rate B/M	Density LB/G	Volume BBL	Message	
11/17/2010	23:41:16	277	6.0	8.47	1116.9		
11/17/2010	23:41:46	282	5.9	8.47	1119.9		
11/17/2010	23:42:16	276	5.9	8.47	1122.9		
11/17/2010	23:42:46	279	5.9	8.47	1125.9		
11/17/2010	23:43:16	286	6.0	8.47	1128.8		
11/17/2010	23:43:46	286	5.9	8.47	1131.8		
11/17/2010	23:44:16	285	5.9	8.47	1134.8		
11/17/2010	23:44:46	289	6.0	8.47	1137.7		
11/17/2010	23:45:16	270	5.9	8.47	1140.7		
11/17/2010	23:45:46	295	6.0	8.47	1143.7		
11/17/2010	23:46:16	294	5.9	8.47	1146.6		
11/17/2010	23:46:46	298	6.0	8.47	1149.6		
11/17/2010	23:47:16	302	5.9	8.47	1152.6		
11/17/2010	23:47:46	305	6.0	8.47	1155.6		
11/17/2010	23:48:16	303	6.0	8.47	1158.6		
11/17/2010	23:48:46	305	6.0	8.47	1161.5		
11/17/2010	23:49:16	308	6.0	8.47	1164.5		
11/17/2010	23:49:46	311	6.0	8.47	1167.5		
11/17/2010	23:50:16	312	6.0	8.47	1170.5		
11/17/2010	23:50:46	320	5.9	8.47	1173.4		
11/17/2010	23:51:16	314	6.0	8.47	1176.4		
11/17/2010	23:51:46	322	6.0	8.47	1179.4		
11/17/2010	23:52:16	314	5.9	8.47	1182.4		
11/17/2010	23:52:46	323	6.0	8.47	1185.4		
11/17/2010	23:53:16	326	6.0	8.47	1188.3		
11/17/2010	23:53:46	328	6.0	8.47	1191.3		
11/17/2010	23:54:16	331	6.0	8.48	1194.3		
11/17/2010	23:54:46	333	6.0	8.47	1197.3		
11/17/2010	23:55:16	327	6.0	8.47	1200.3		
11/17/2010	23:55:46	342	6.0	8.47	1203.2		
11/17/2010	23:56:16	343	6.0	8.47	1206.2		
11/17/2010	23:56:46	347	6.0	8.48	1209.2		
11/17/2010	23:57:16	344	6.0	8.47	1212.2		
11/17/2010	23:57:46	354	6.0	8.47	1215.2		
11/17/2010	23:58:16	351	6.0	8.48	1218.1		
11/17/2010	23:58:46	356	6.0	8.47	1221.1		
11/17/2010	23:59:16	354	6.0	8.48	1224.1		
11/17/2010	23:59:46	359	6.0	8.48	1227.1		
11/18/2010	00:00:16	358	6.0	8.48	1230.1		
11/18/2010	00:00:46	267	3.8	8.48	1232.0		
11/18/2010	00:01:46	257	3.8	8.48	1235.8		
11/18/2010	00:02:16	259	3.8	8.47	1237.7		
11/18/2010	00:02:46	265	3.8	8.48	1239.6		
11/18/2010	00:03:16	202	1.8	8.48	1240.9		
11/18/2010	00:03:46	201	1.8	8.48	1241.8		
11/18/2010	00:04:16	215	2.3	8.48	1242.8		
11/18/2010	00:04:46	211	2.3	8.48	1244.0		
11/18/2010	00:05:16	806	0.0	8.48	1244.9		
11/18/2010	00:05:46	799	0.0	8.48	1244.9		
11/18/2010	00:06:16	796	0.0	8.48	1244.9		
11/18/2010	00:06:17					Bump Top Plug	
11/18/2010	00:06:17	796	0.0	8.48	1244.9		
11/18/2010	00:06:18					End Displacement	
11/18/2010	00:06:18	796	0.0	8.48	1244.9		

Well			Field		Job Start		Customer		Job Number	
SGU 8502D-36 B36 496 8502D-36			Story Gulch		Nov/17/2010		Encana Oil & Gas		385716	
Date	Time 24-hr clock	Treating Pressure PSI	Flow Rate B/M	Density LB/G	Volume BBL	Message				
11/18/2010	00:07:16	795	0.0	8.48	1244.9					
11/18/2010	00:07:46	609	0.0	8.48	1244.9					
11/18/2010	00:08:16	-5	0.0	8.48	1244.9					
11/18/2010	00:08:46	-5	0.0	8.48	1244.9					
11/18/2010	00:09:16	-4	0.0	8.48	1244.9					
11/18/2010	00:09:46	-4	0.0	8.48	1244.9					
11/18/2010	00:10:12					Float Held / 1 bbl Back				
11/18/2010	00:10:12	-5	0.0	8.48	1244.9					
11/18/2010	00:10:16	-4	0.0	8.48	1244.9					
11/18/2010	00:10:46	-4	0.0	8.48	1244.9					
11/18/2010	00:11:16	-3	0.0	8.48	1244.9					
11/18/2010	00:11:46	-3	0.0	8.48	1244.9					
11/18/2010	00:12:16	-3	0.0	8.48	1244.9					
11/18/2010	00:12:46	-3	0.0	8.48	1244.9					
11/18/2010	00:13:16	-3	0.0	8.48	1244.9					
11/18/2010	00:13:46	-3	0.0	8.48	1244.9					
11/18/2010	00:14:16	-3	0.0	8.48	1244.9					
11/18/2010	00:14:46	-3	0.0	8.48	1244.9					
11/18/2010	00:15:16	-3	0.0	8.48	1244.9					
11/18/2010	00:15:46	-3	0.0	8.48	1244.9					
11/18/2010	00:16:16	-1	0.0	8.48	1244.9					
11/18/2010	00:16:46	0	0.0	8.48	1244.9					
11/18/2010	00:17:16	1	0.0	8.48	1244.9					
11/18/2010	00:17:46	3	2.0	8.48	1245.1					
11/18/2010	00:18:16	-13	1.5	8.48	1246.5					
11/18/2010	00:18:46	0	0.0	8.48	1246.7					
11/18/2010	00:19:16	76	0.0	8.48	1246.7					
11/18/2010	00:19:46	-9	0.0	8.48	1246.7					

Post Job Summary

Average Pump Rates, bbl/min					Volume of Fluid Injected, bbl					
Slurry 6.0	N2	Mud	Maximum Rate 6.0		Total Slurry 558.0	Mud 160.0	Spacer 160.0	N2		
Treating Pressure Summary, psi					Breakdown Fluid					
Maximum 3000	Final 800	Average 200	Bump Plug to 800	Breakdown	Type FreshWater		Volume 800.0 bbl		Density 8.34 lb/gal	
Avg. N2 Percent		Designed Slurry Volume 558.0 bbl		Displacement 230.0 bbl		Mix Water Temp 80 degF		Cement Circulated to Surface? <input checked="" type="checkbox"/>		Volume 205.0 bbl
								Washed Thru Perfs <input type="checkbox"/>		To
Customer or Authorized Representative Randy Burke				Schlumberger Supervisor B. Farnham				Circulation Lost <input checked="" type="checkbox"/>		Job Completed <input checked="" type="checkbox"/>
								-		-