

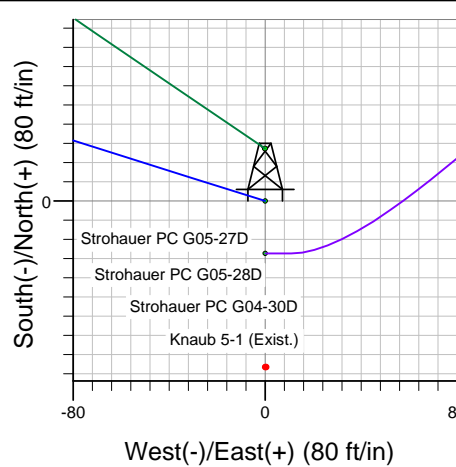
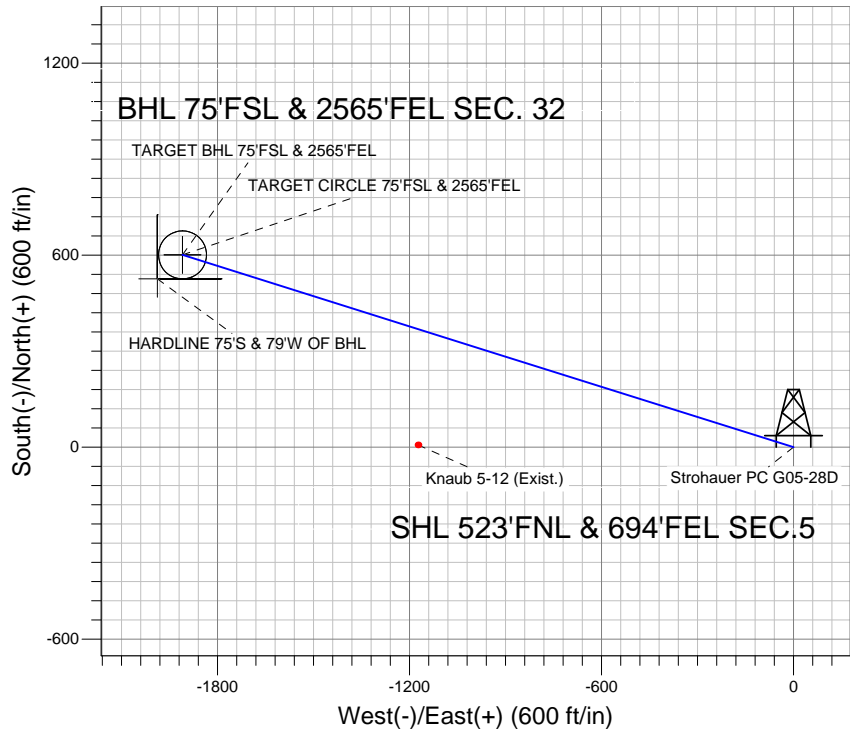
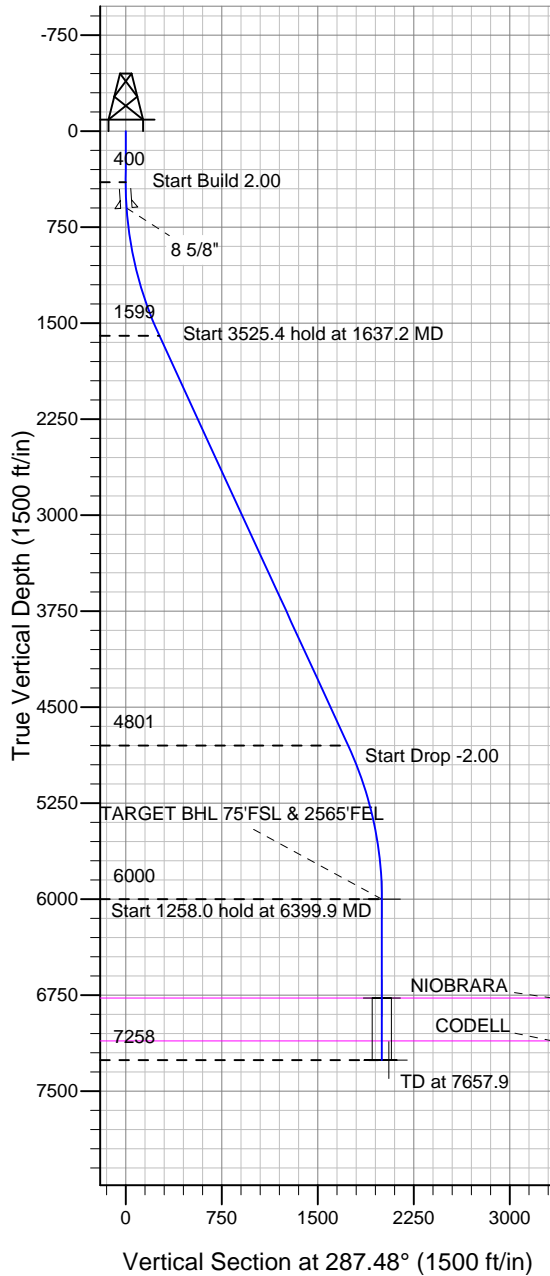
### Well Name: Strohauer PC G05-28D

Surface Location: Strohauer PC G05-27D Pad Sec.5-T4N-R65W  
North American Datum 1983, US State Plane 1983 Colorado Northern Zone  
Ground Elevation: 4675.0

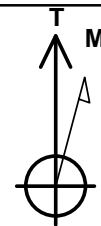
+N/-S	+E/-W	Northing	Easting	Latitude	Longitude	Slot
0.0	0.0	1370323.54	3228495.11	40.347040	-104.680210	

Original Well EleWELL @ 4688.0ft (Original Well Elev)

### NOBLE ENERGY INC WELD COUNTY CO



Strohauer PC G05-27D Pad Sec.5-T4N-R65W  
Strohauer PC G05-28D  
Noble Strohauer PC G05-28D Plan #1 (8-19-11)  
16:35, August 23 2011



Azimuths to True North  
Magnetic North: 8.79°  
Magnetic Field  
Strength: 53095.2snT  
Dip Angle: 67.02°  
Date: 8/19/2011  
Model: IGRF2010

#### WELLBORE TARGET DETAILS (LAT/LONG)

Name	TVD	+N/-S	+E/-W	Latitude	Longitude	Shape
TARGET BHL 75'FSL & 2565'FEL	6000.0	601.2	-1909.3	40.348690	-104.687060	Point
TARGET CIRCLE 75'FSL & 2565'FEL	6773.0	601.2	-1909.3	40.348690	-104.687060	Circle (Radius: 75.0)
HARDLINE 75'S & 79'W OF BHL	7258.0	526.2	-1988.3	40.348484	-104.687343	Polygon

#### SECTION DETAILS

Sec	MD	Inc	Azi	TVD	+N/-S	+E/-W	DLeg	TFace	VSec	Target
1	0.0	0.00	0.00	0.0	0.0	0.0	0.00	0.00	0.0	
2	400.0	0.00	0.00	400.0	0.0	0.0	0.00	0.00	0.0	
3	1637.2	24.74	287.48	1599.1	79.0	-250.9	2.00	287.48	263.0	
4	5162.7	24.74	287.48	4800.9	522.2	-1658.4	0.00	0.00	1738.7	
5	6399.9	0.00	0.00	6000.0	601.2	-1909.3	2.00	180.00	2001.7	TARGET BHL 75'FSL & 2565'FEL
6	7657.9	0.00	0.00	7258.0	601.2	-1909.3	0.00	0.00	2001.7	