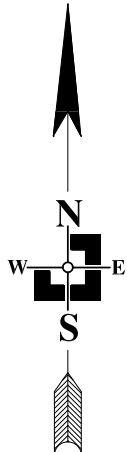
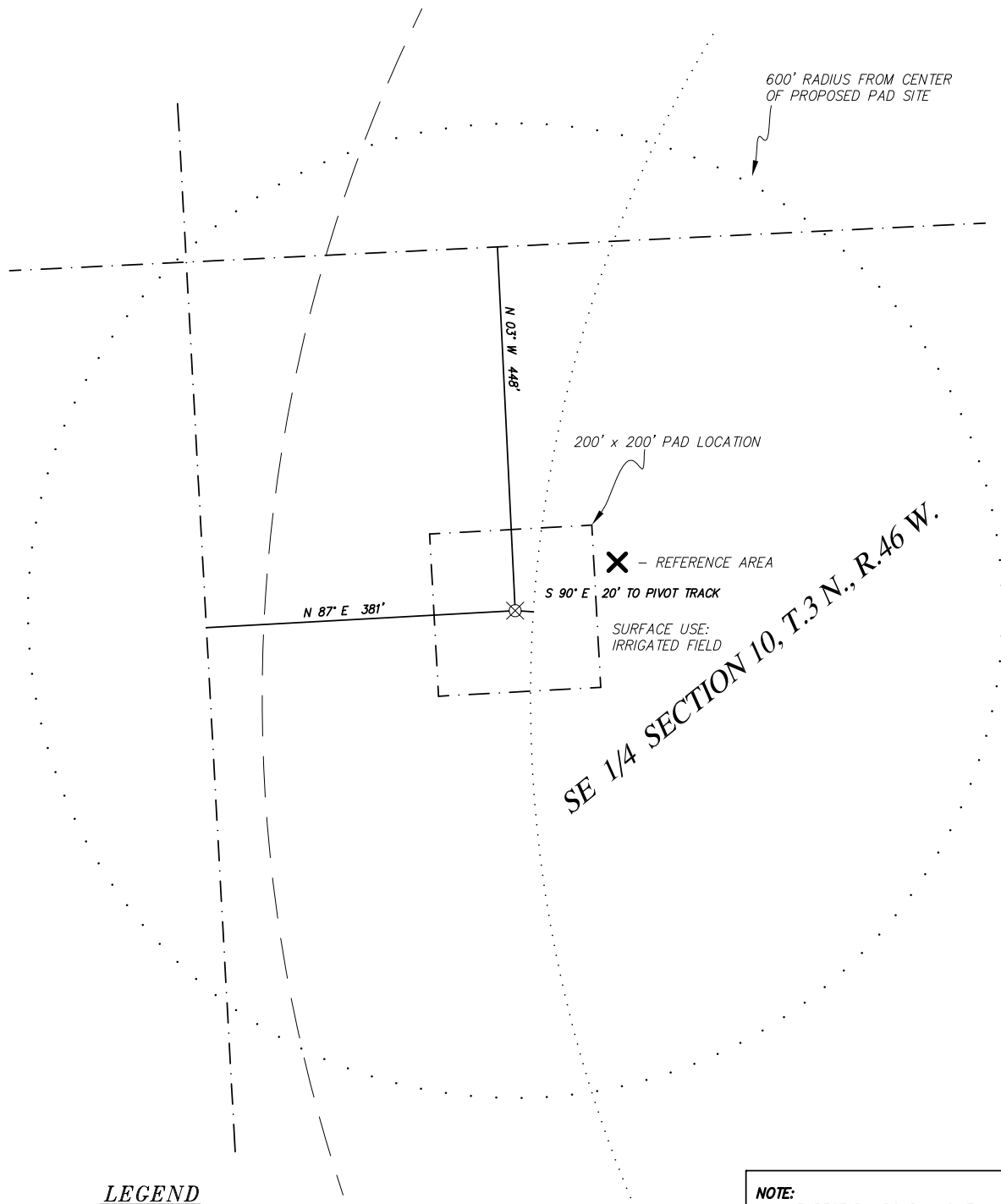




# PROBASCO #33-10 3N-46W

## REFERENCE AREA MAP

YUMA COUNTY, COLORADO  
AUGUST 25, 2011



### LEGEND

-  PROPOSED WELL LOCATION
-  SECTION LINE

### NOTE:

- NEAREST RAILROAD - 8.47± MILES TO SOUTH
- NEAREST RIVER - ROCK CREEK - 5.9± MILES NORTHWEST
- NEAREST BODY OF WATER - DERRING LAKE - 15.3± MILES SOUTHWEST

SCALE 1" = 200'



THREE CORNERS SURVEYING AND MAPPING, LLC

PO Box 463; 312 Main Street  
Wray, CO 80758

970-332-4133  
3cornerssurveying@centurytel.net

