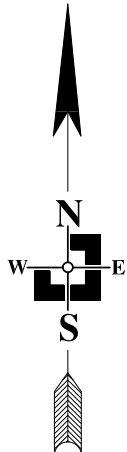
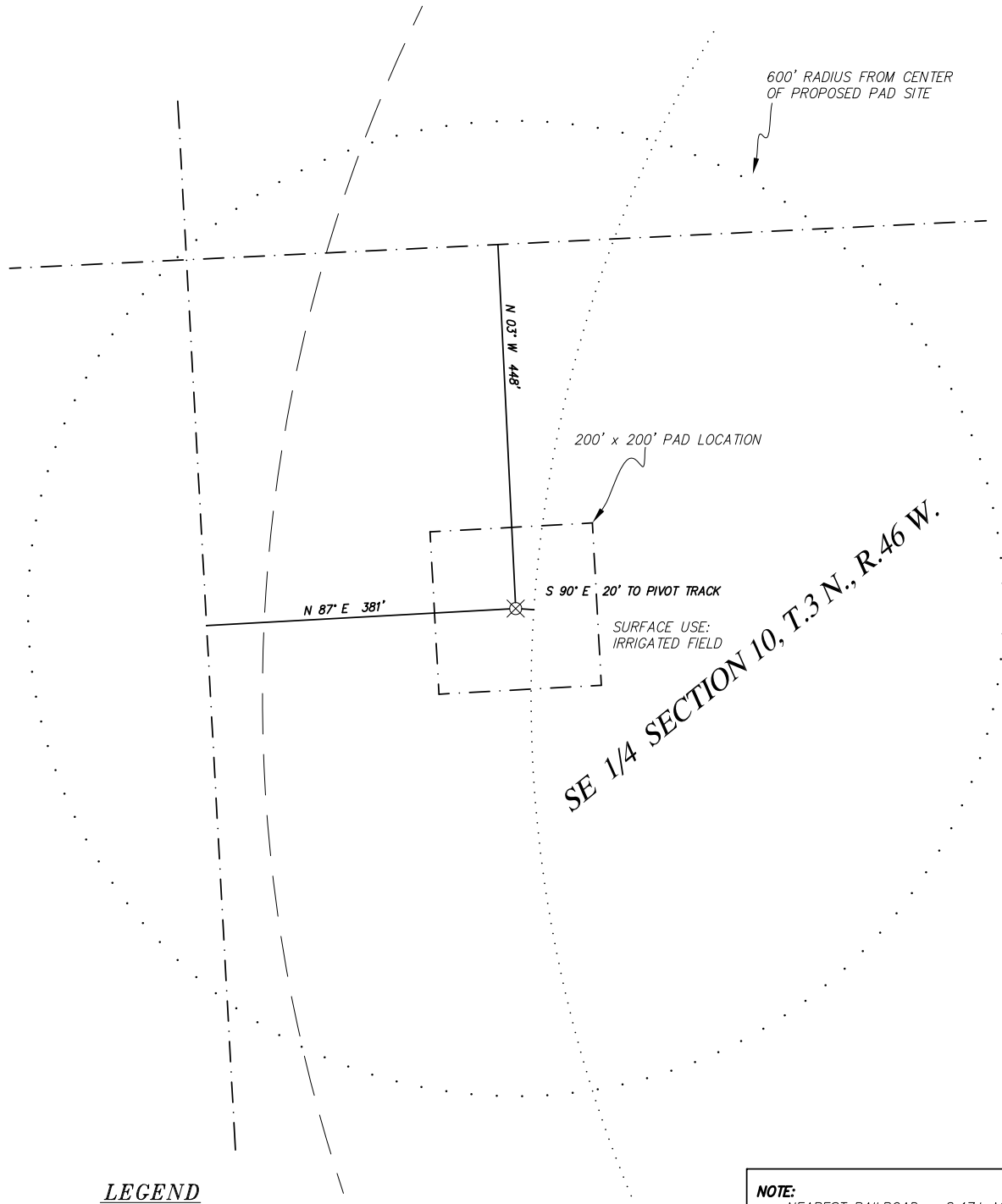


PROBASCO #33-10 3N-46W

LOCATION DRAWING

YUMA COUNTY, COLORADO
AUGUST 25, 2011



LEGEND

- PROPOSED WELL LOCATION
 SECTION LINE

NOTE:

- NEAREST RAILROAD - 8.47± MILES TO SOUTH
- NEAREST RIVER - ROCK CREEK - 5.9± MILES NORTHWEST
- NEAREST BODY OF WATER - DERRING LAKE - 15.3± MILES SOUTHWEST

SCALE 1" = 200'



THREE CORNERS SURVEYING AND MAPPING, LLC

PO Box 463; 312 Main Street 970-332-4133
Wray, CO 80758 3cornerssurveying@centurytel.net

