

HYDROLOGY MAP

Operator: Rosewood Resources, Inc.

Well Name: Probasco 33-10

Location: Yuma, Colorado (NWSE Sec. 10, T3N R46W. 2204' FSL & 2292' FEL)

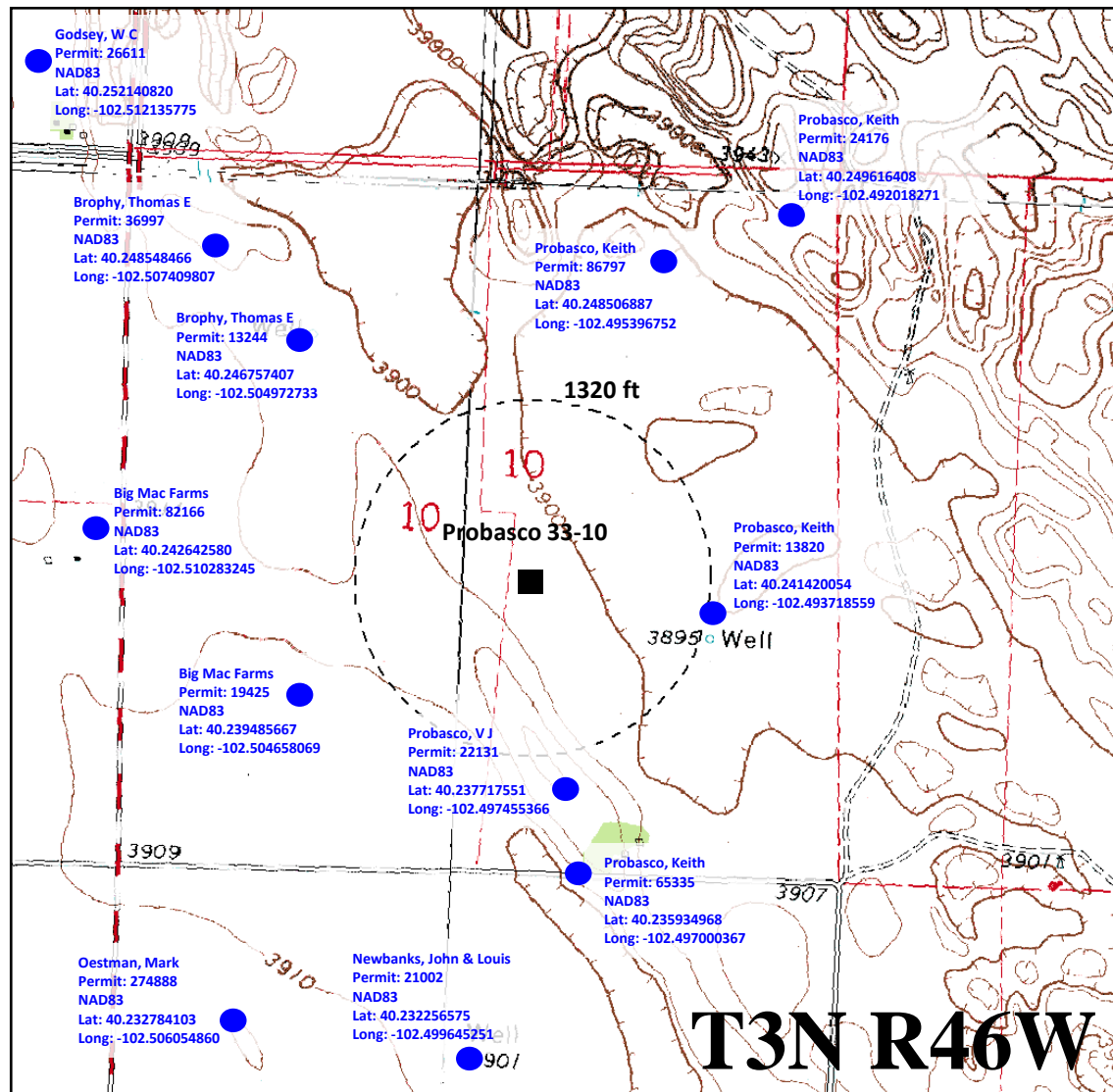
Colorado North (NAD 83)

Latitude: 40.24198

X: 3837715.02

Longitude: -102.49858

Y: 1345173.74



NOTE:

- 1) Nearest railroad- ±8.47 miles to South
- 2) Nearest river- Rock Creek- ±5.9 miles Northwest
- 3) Nearest body of water- Derring Lake- ±15.3 miles Southwest